

APPROVED

MINUTES OF MARCH 2, 2017 PUBLIC MEETING ON LAKEFRONT PARK
GLENCOE PARK DISTRICT
999 GREEN BAY ROAD, GLENCOE, ILLINOIS 60022

The meeting began at 6:30 p.m.

Board Members present to observe:

Steve Gaines, President
Dudley Onderdonk, Vice President
Lisa Brooks, Treasurer
Andre Lerman, Commissioner

Staff present:

Lisa Sheppard, Executive Director/Secretary
Chris Leiner, Director of Parks/Maintenance
Mike Lushniak, Director of Recreation/Facilities
Paul Goedjen, Takiff Manager

Landscape Architects present:

John McManus, AltaManu
Josephine Bellalta, AltaManu

Attendees who signed in or spoke: Stefanie Boron, Debbie Dresner, Lori Goldberg, Ed Goodale, Rita Grassel-Shefa, M. Gourlay, JoAnn Kimzey, Phil Kiraly, Scott Kogen, Josh Lutton, Anne Pearlstein, John Ruderman, Bart Schneider, Cathy Secionle, Eileen Sirkin, Jack Smyth, Tracy Sprayregen, Sharon Zulkie

The meeting opened with a welcome and introduction from President Gaines. President Gaines indicated that the purpose of this Public Meeting was to discuss Lakefront Park only and that the Beach, Bluff, Water Plant, and Boating Beach were not part of tonight's discussion in order to keep us on track.

Executive Director Sheppard then welcomed everyone and expressed that the Board and staff came with an open mind to gather information on the revitalization of this park as we honor the past and update the park for the future. Sheppard also indicated that the Board has had preliminary discussion on this park and wanted to let the residents present to know up front some amenities they have indicated they are not interested in including in this update of the park. Those items included no shelters, amphitheater, washroom structure, spray pad, or lighted tennis courts. Sheppard also indicated that they are aware that there are water tanks under the tennis courts and there limitations on what we can do with that area. Staff has already begun talks with the Village about what can and cannot be done in this area.

John McManus and Josephine Bellalta from AltaManu provided a presentation on their firm, work they have done, and a history and information on Lakefront Park. They also asked residents to put a dot on a Glencoe map when they arrived to indicate where they reside. The presentation is attached to the minutes.

Mr. McManus and Ms. Bellalta then facilitated discussion and ideas from the audience. The ideas included:

- Redo the tennis courts: one resident wanted clay courts but recognized the maintenance issue, suggested they be made regulation size
- Some questioned if we need tennis courts and if the playground could be there
- One resident did an informal survey from neighbors and indicated that the playground gets used a lot and could be enlarged.
- More swings
- Pathways around the park need to be updated
- Against putting a pathway through the park
- Make one of the tennis courts a pickle ball court
- Add Bocce Ball
- Don't put in anything that obscures the view
- Not too much hard scape
- Dull in the winter, add plants with winter interest
- Use native plantings
- Consider more items that residents could make a donation to (dedicated items)
- Signage: more natural looking
- No big bushes over 5 feet tall
- Consider a dedicated barbeque area in the park, so that people don't bring their own grills and then dump coals by tree roots.
- Fix the drainage
- Add a 2 - 12 playground (current playground is a 2 - 5)
- Artwork in the park (like when ceramics did the fairy houses)
- Keep the dedicated benches

Executive Director Sheppard asked about how they felt about a small meandering pathway that did a small loop that would allow for individuals with mobility issues the ability to picnic under the tree canopy. She indicated pathways do not have to intersect the entire park. There was support for that type of pathway.

Executive Director Sheppard than thanked the residents for their input and explained that the Special Projects and Facilities Committee will be meeting next week on Tuesday at 6:30pm to have further discussion. These meetings are open to the public. We will also post our meeting information and future designs on our website. Sheppard indicated that if they would like to be kept informed of meetings to leave their email address on the sign in sheet and they will be updated when plans are presented to the committee.

The meeting ended at 7:30 p.m.

Respectfully submitted,

Lisa M. Sheppard
Secretary



LAKEFRONT PARK

March 2nd 2017





Delighted to be Here!!!

Tonight

- **Start with: Who We Are?**
- **A Little History**
- **Brief Analysis of the Park and Existing Conditions**
- **Potential Projects that Should/Must Take Place**
- **Discussion**

Most Important: Here to Listen to Your Ideas

Altamanu: Who are we?

Altamanu

Josephine Bell ALTA and John Mac MANUs

Planning, Urban Design, Landscape Architecture, Arboriculture, and Soils.



Josephine



John



Phil



Jane



Orenthal

Team for Glencoe

Who are we?



Jerry M. Pilipowicz
Principal & Managing Member

Education:

B.Sc. Civil Engineering, University of Manitoba, WPG, MB, CAN
B. Env. Design, Architecture, University of Manitoba, WPG, MB, CAN

Licenses/Certifications:

Professional Engineer, IL
Professional Engineer, OH
Professional Engineer, MD



SMP GROUP

Engineering and Storm Water Management

- Experienced in park design
- Creative and Accomplished at community outreach
- Worked together on multiple park projects

Origins



London and Santiago Chile



Ireland

Altamanu: All types of Public Open Space, Historic to Contemporary



Performance Spaces and Destination Skate and Dog Parks



Creating Places: New Award Fulton Market Congress for New Urbanism



And Last Year Batavia River Street Woonerf/Shared Street Congress for New Urbanism



Van Vlissingen Prairie Environmental Park



135 acre Park - Restoration and Natural Play

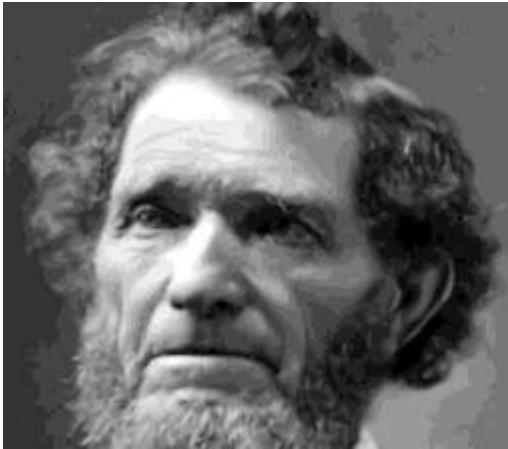
Altamanu Relevant Projects

12 Master Plans, 14 Park Projects & 4 Historic Parks in Oak Park Alone



Also streets, medians and planters for the Village

Lakefront Park Notes on History



Opinion about the origins of the village's name is divided; Some say it is named after Matthew Coe (Glen Coe); others say it is named for Glencoe of Scotland (*Gleann Comhann*)

“in 1835 a man named Anson Taylor, a carpenter from Connecticut, who traded in furs came north with his family and built a harbor into the lake”.

Development came in earnest with the arrival of Dr. Alexander Hammond who along with early founders set aside land for use as a park that was *dedicated Lakefront Park in 1867*

The Park District was established in 1912

The approaches and beach house were built in 1928 under the supervision of Paul Battey.

A two million gallon underground reservoir was added in 1961



Lakefront Park Notes on History



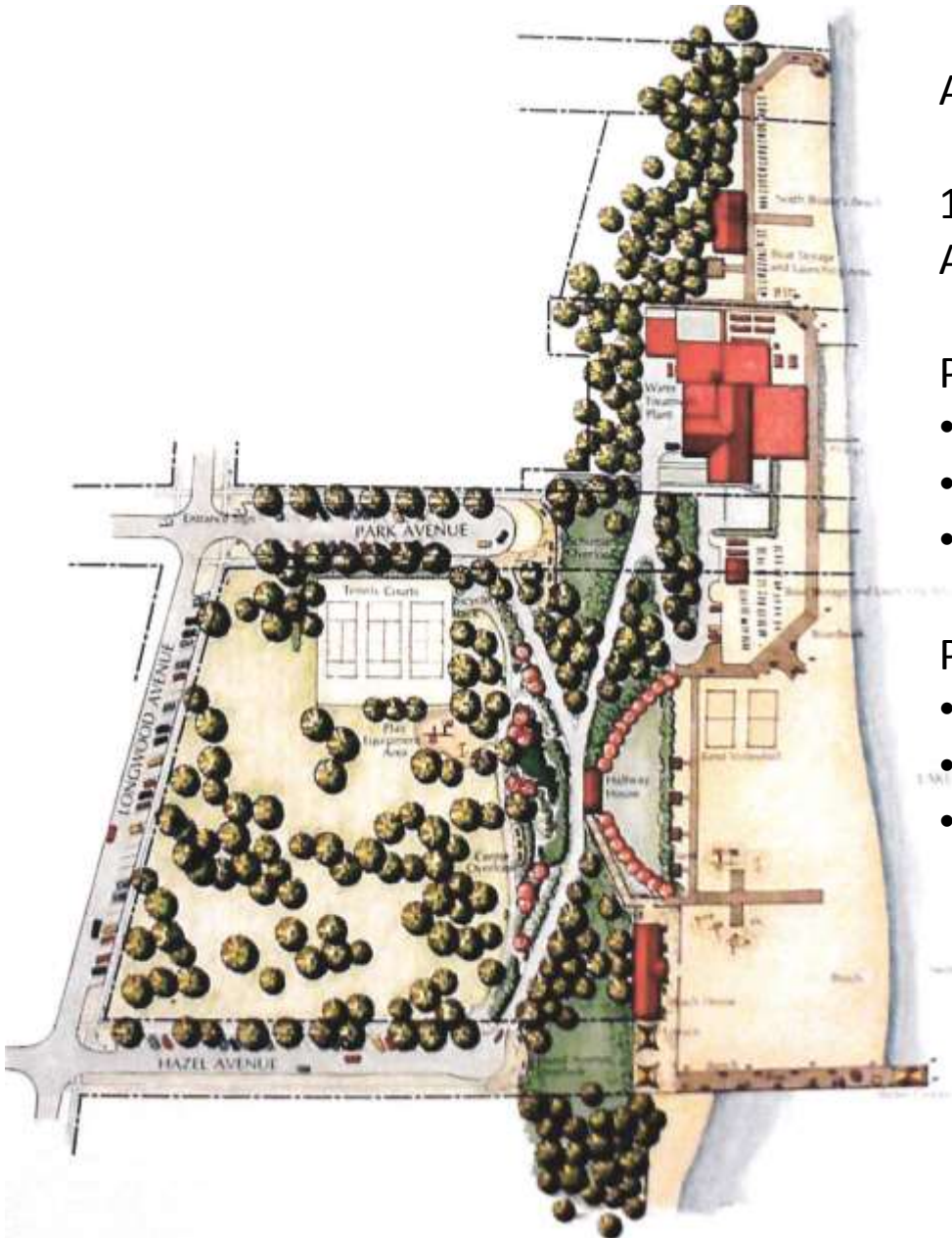
The original Reservoir project had a green asphalt top for tennis courts.

Tennis Courts redone in 1970's

The Artificial Turf to be seen today is the 2nd such covering

It cost \$4,000 to clean in 2012

Lakefront Park Previous Plans



A plan from 1997

1st phase earned an Open Space Land Acquisition & Development Grant.

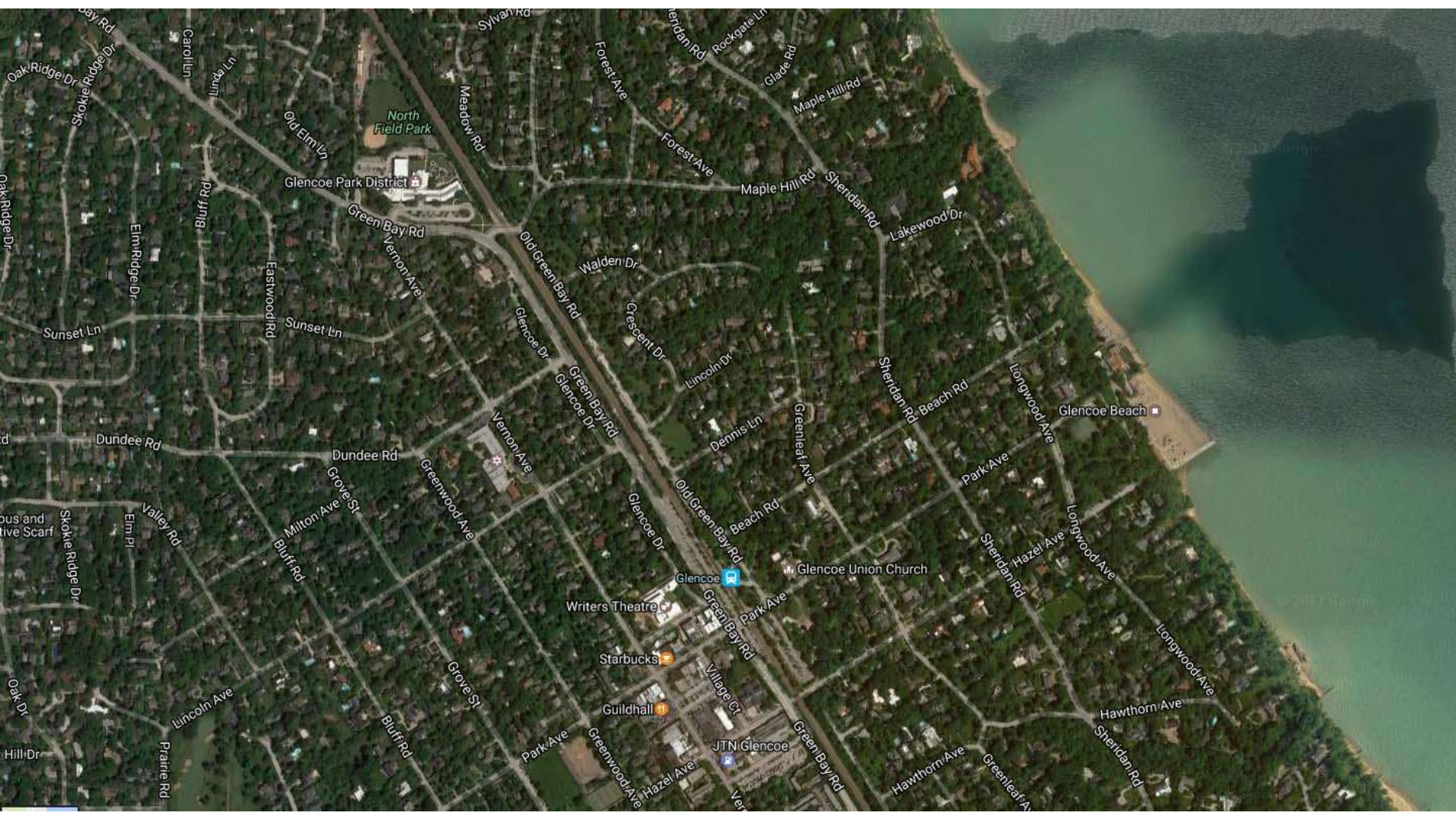
Phase 1

- 1928 beach house was updated/repaired
- Added playground and wood pergola,
- Added handicap access to the beach

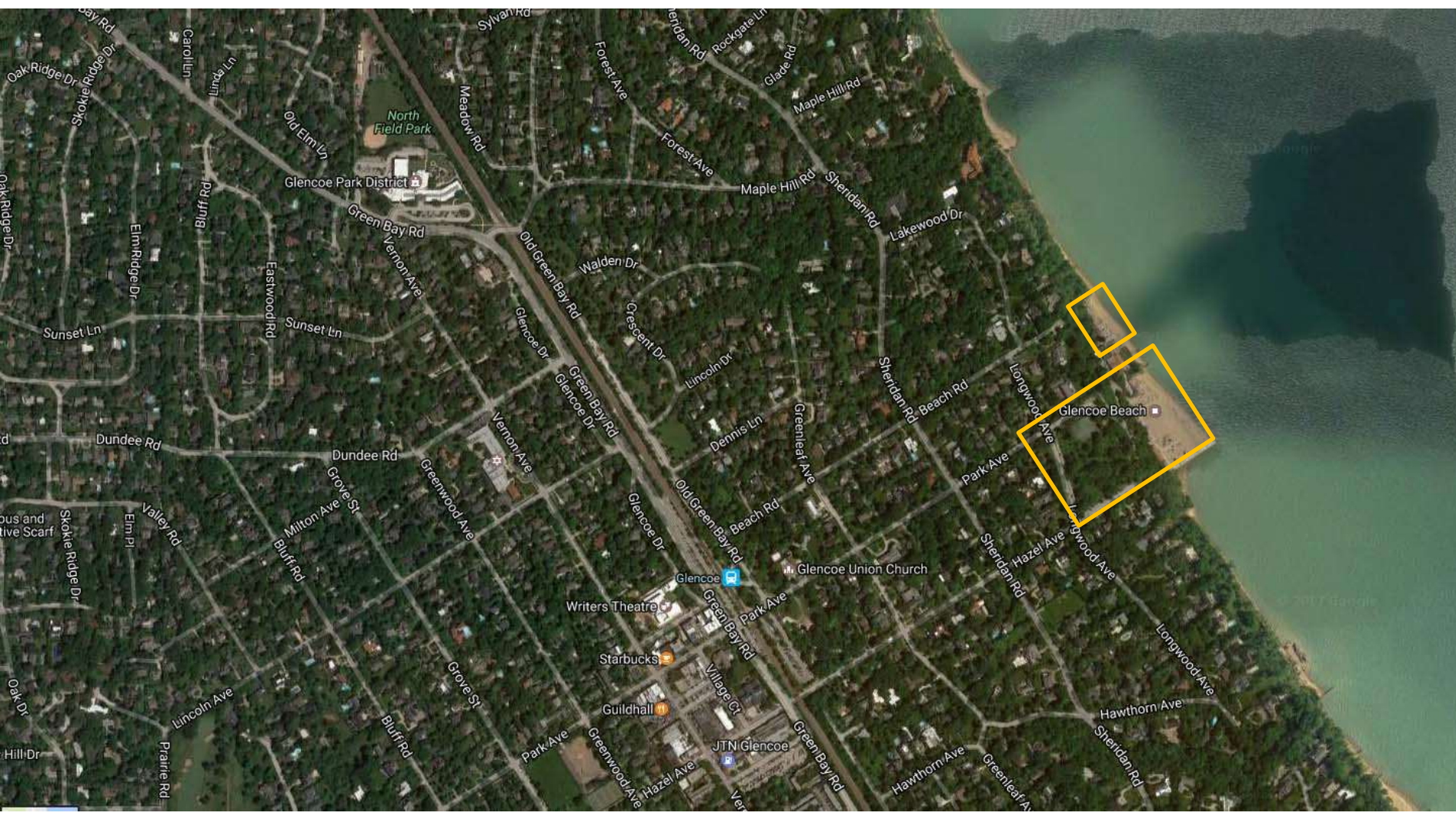
Phase II

- Added native plants on the bluffs
- Added interpretive signs.
- Pathways updated and Play Equipment added

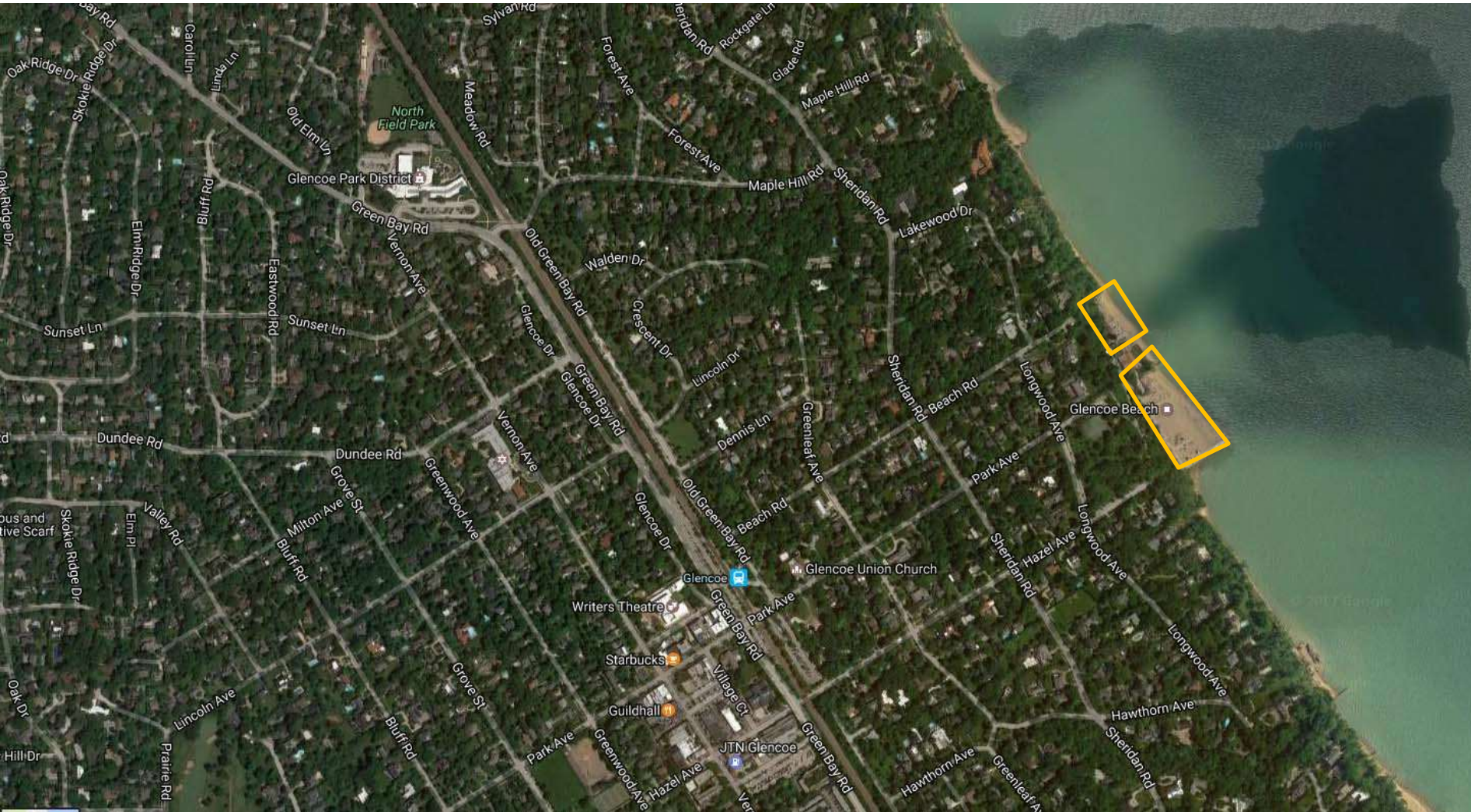
Lakefront Park Context



Lakefront Park Context



Lakefront Park Context: Major Public Beach



Lakefront Park Context: 2 Major Roadways Act as Boundaries



2 Regional Roadways, No Coastal Road, & Longwood is Local

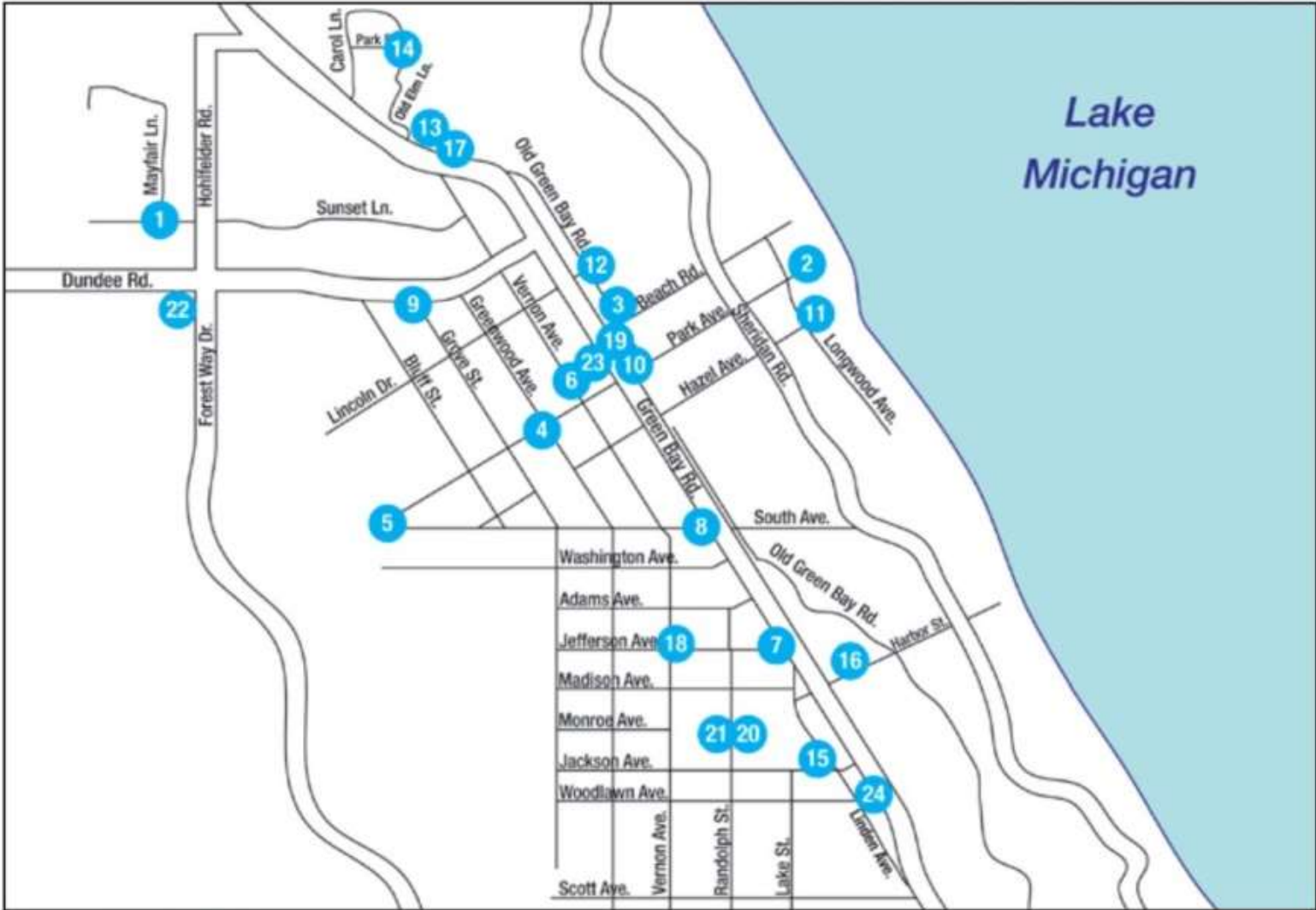


Lakefront Park Context: The Park is in a Local Location

Local in Location But it is also a Regional Park



Lakefront Park Context: Other Park Locations



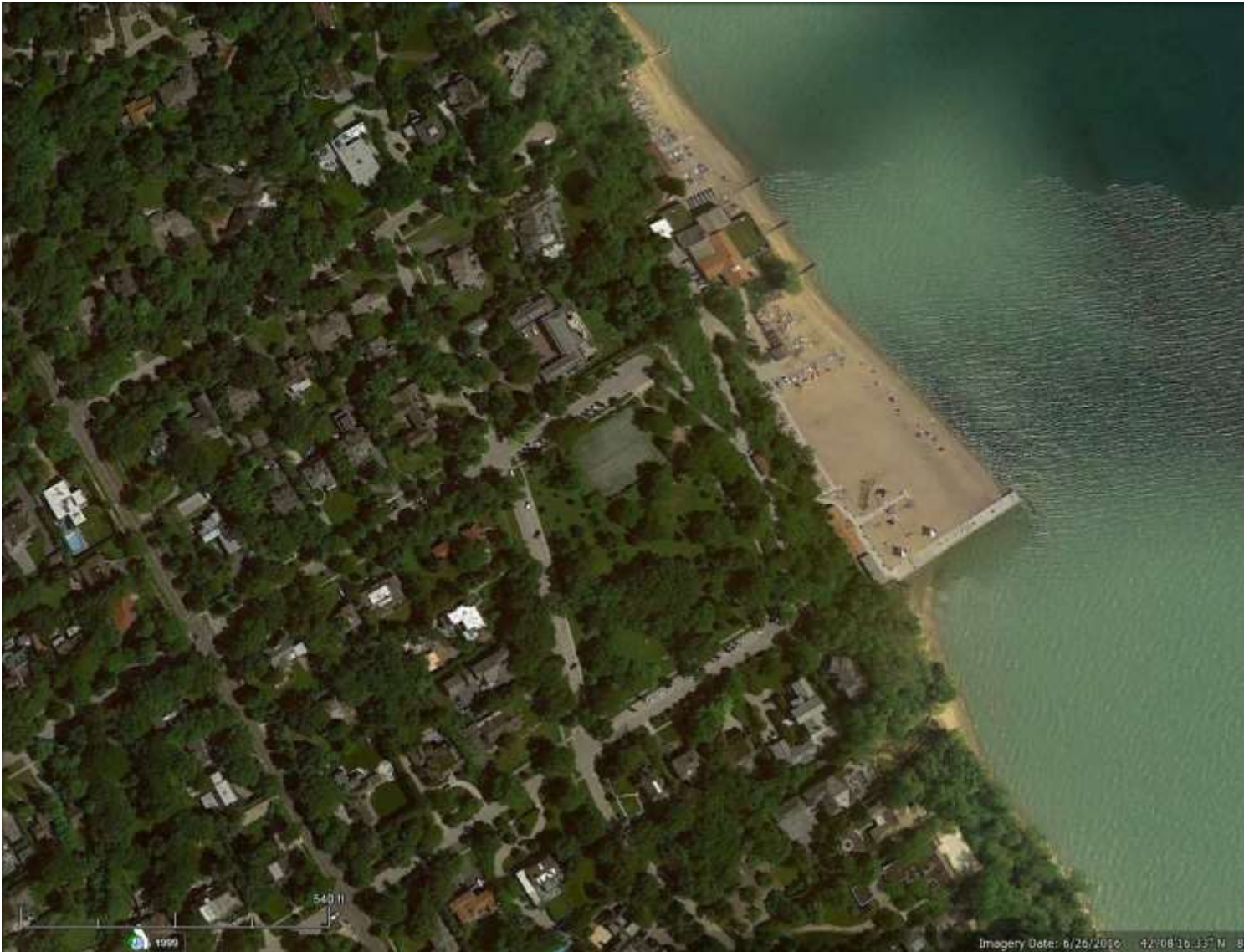
Lakefront Park Context: Nearly All are West of Sheridan Road



All of this Heightens Local v Regional Differing Perceptions



Lakefront Park: Local Context



Lakefront Park: Local Context



Lakefront Park: Local Context



12 Houses Face the Park Directly



12 Houses Also Face the Local Edge (Diagram is not Literal)



Lakefront Park Regional Use (Diagram is not Literal)



This Results in Rashomon

Akira Kurasowa:

Characters give alternate and contradictory views of the same incident



Locals:

It's Our Park!!!

**Region & Rest of
Glencoe:**

It's a Public Park!!!

Park District:?

**HARD
PLACE**



Lakefront Park: What's in the Park



Lakefront Park: trees layout “Rain Spotting”



Lakefront Park: Existing Conditions



Lakefront Park: Storm Water & Drainage



Lakefront Park: Storm Water & Drainage



Tennis Courts and Swing

Looking E to SE

Lakefront Park: Storm Water & Drainage



Looking SE from further into the park towards Entry Road on SE Corner

Lakefront Park: Storm Water & Drainage



Looking South along Bluff-Side Path Water Flows Across Paths at Bench

Lakefront Park: Storm Water & Drainage



Water Flows Across Paths in Park and Along Hazel Ave

Lakefront Park: Storm Water & Drainage



Water Flows Across Paths in Park and Along Hazel Ave

Lakefront Park: Storm Water & Drainage



Water Flows Across Paths and Mostly Passes Catch Basin in Park: Need a Delicate Regrade

Lakefront Park: Storm Water & Drainage



Water Flows Across Paths and Mostly Passes Catch Basin in Park: Need a Delicate Regrade

Lakefront Park: Tennis Courts

Reservoir is below the tennis courts



Views along Park Avenue

Lakefront Park: Tennis Courts



Views along Park Avenue

Lakefront Park: Storm Water & Drainage



View Looking SE



Storm Water Ponds Close to the Reservoir Access Hatch

Lakefront Park: Tennis Courts



Detail of planting along fence



View From Park

Lakefront Park Swing and Play Equipment



Lakefront Park Swing and Play Equipment



Lakefront Park Signage and Benches



Lakefront Park: ADA Compliant Path



“Shouldn’t there be some access so we can experience the trees?”

Lakefront Park: Potential Projects



Drainage and Concealing Paths in the landscape



How we could introduced paths as in other historic parks

Lakefront Park: Discussion





Something to think about in the Long Term : Small Exhibit Wetlands



Consider adding a wetland for stormwater
and to provide a landscape exhibit for the kids
And habitat for birds and butterflies