

MINUTES OF FEBRUARY 13, 2017 SPECIAL PROJECTS AND FACILITIES
COMMITTEE MEETING
GLENCOE PARK DISTRICT
999 GREEN BAY ROAD, GLENCOE, ILLINOIS 60022

The meeting was called to order at 6:37 p.m. and roll was called.

Committee Members present:

Andre Lerman, Chair/Commissioner

Lisa Brooks, Treasurer

Staff present:

Lisa Sheppard, Executive Director/Secretary

Chris Leiner, Director of Parks/Maintenance

Mike Lushniak, Director of Recreation/Facilities

Erin Maassen, Manager of Marketing/Comm.

Commissioners present:

Seth Palatnik, Commissioner

Members of the Public in attendance who signed in or spoke: Nicole Batson, Josephine Bellalta, Stefanie Boron, John McManus, Jerry Pilipowicz, David Rongey, Catherine Wang

Presentation on West Playground Conceptual Designs: Chair Lerman and Executive Director Sheppard introduced Josephine Bellalta and John McManus of AltaManu, Jerry Pilipowicz of SMP Group Civil Engineering, Catherine Wang, Superintendent of District #35, and David Rongey, Principal of West School. AltaManu presented design concepts for both West Park attached to these minutes. Discussion ensued.

Matters from the Public: Nicole Batson questioned if a tot playground was needed at West School. Executive Director Sheppard responded that the playground was for the entire community not just school age children and that the neighborhood surrounding the school tends to have younger families with toddler aged children.

Stephanie Boron indicated that she liked the designs.

Presentation on Astor Place Playground Conceptual Designs: Director Leiner gave a synopsis of the park and introduced Josephine Bellalta and John McManus of AltaManu, Jerry Pilipowicz of SMP Group Civil Engineering who gave the presentation. Discussion ensued.

Matters from the Public: Nicole Batson commented on park-residence barriers and that the designs are wonderful. Stefanie Boron commented positively on the boogie board and age-appropriateness. She would like to additional shade, more playfulness, and to add more safety features including a fence.

Chair Lerman directed staff, based on discussion of the Committee, to add design concepts to the February 21 Special Projects and Facilities Committee meeting agenda for additional community input before advancing to the February 28 Regular Board meeting for approval.

AltaManu & SMP Group exited the meeting.

Other Business: Executive Director Sheppard reviewed Takiff parking and indicated that during capital project planning they did not know at that time that the skate park would need to be removed. Staff is recommending to the Board to add additional funds to the budget so that the Board can consider adding parking in the Parks Department and where the skate park was located. Executive Director Sheppard indicated that the Special Projects Committee would have time to vet the idea in committee before approving the expenditure of any funds.

Adjourn: Commissioner Lerman moved to adjourn the meeting at 8:08 p.m. Commissioner Brooks seconded the motion, which passed by unanimous voice vote.

Respectfully submitted,

Lisa M. Sheppard
Secretary



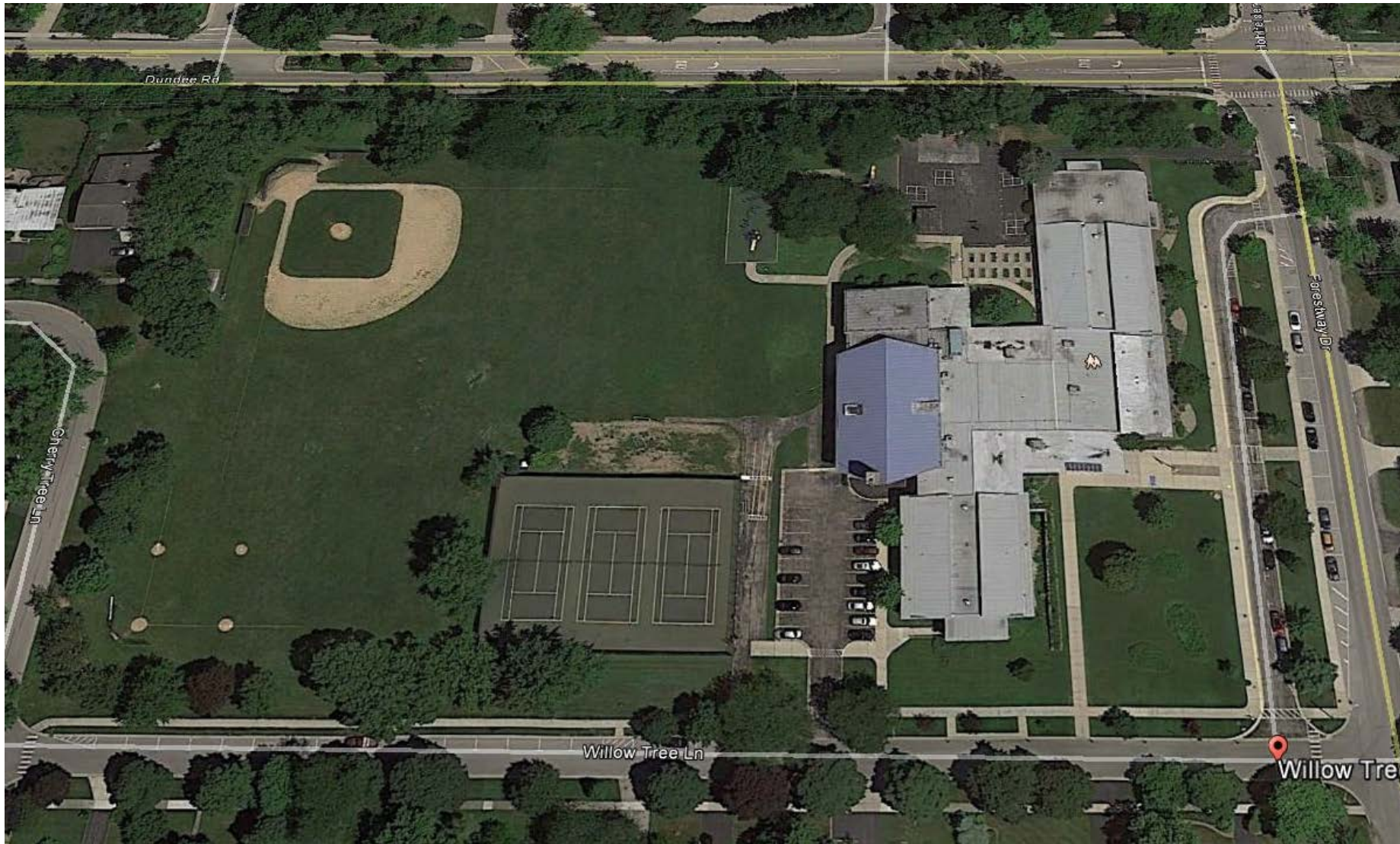
West Park and Astor Park Playground Renovations February 13th 2017



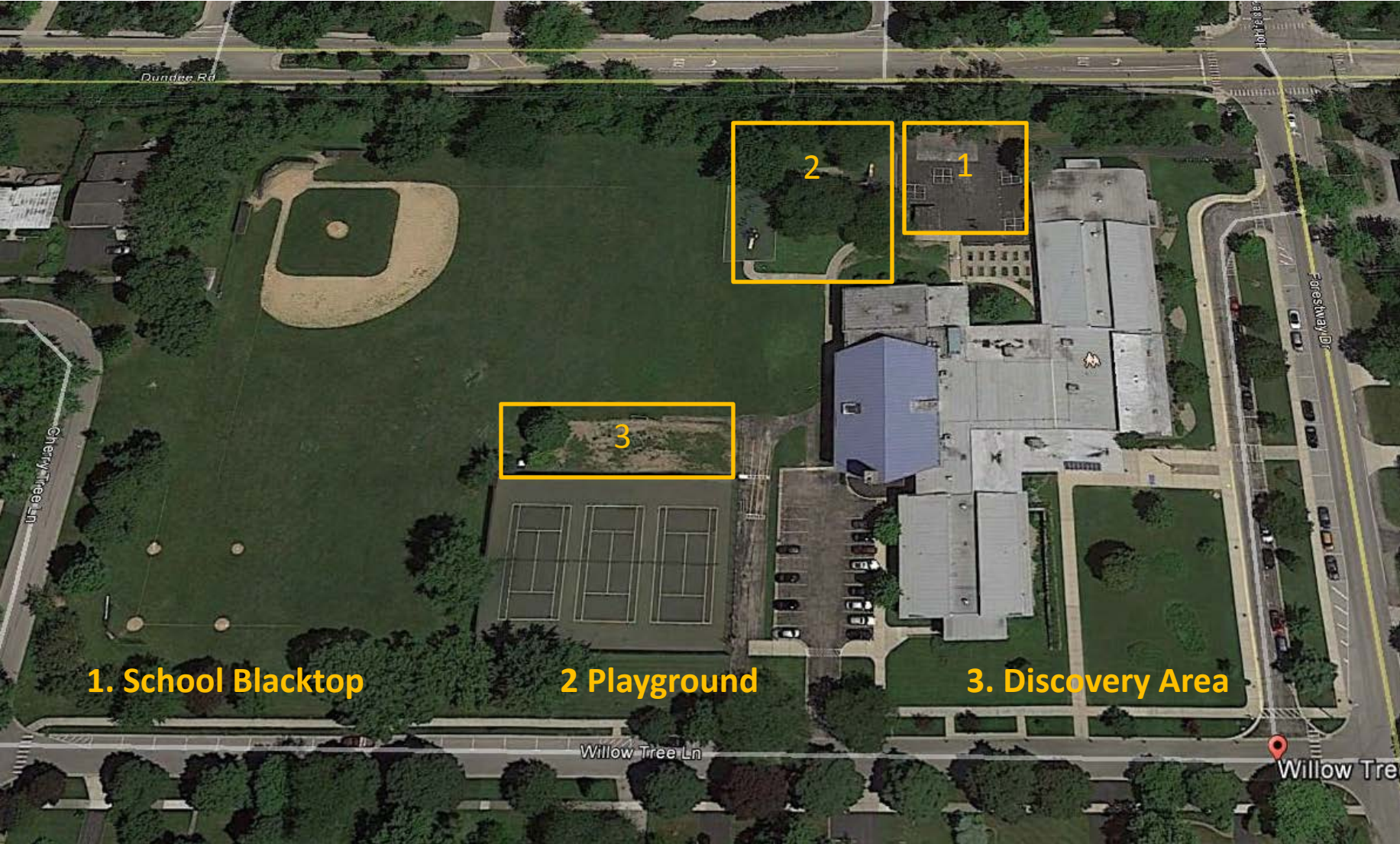


Delighted to be Here!!!

West Park Playground : Existing Site Aerial



West Park Playground : Projects



1. School Blacktop

2 Playground

3. Discovery Area

West Park Playground Existing Site Aerial



West Park Playground Existing Trees



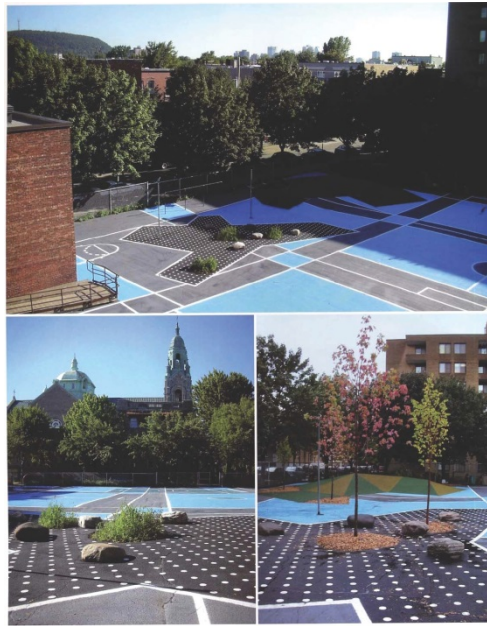
West Park Playground Existing Site Aerial



West Park Playground : School Black Top

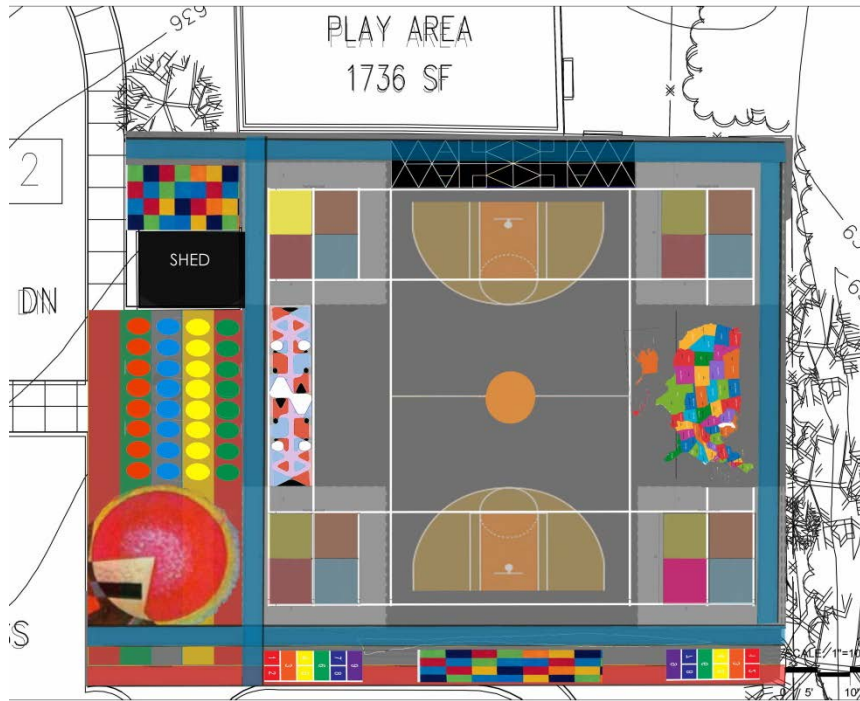


West Park Playground : Painted Black Top Examples

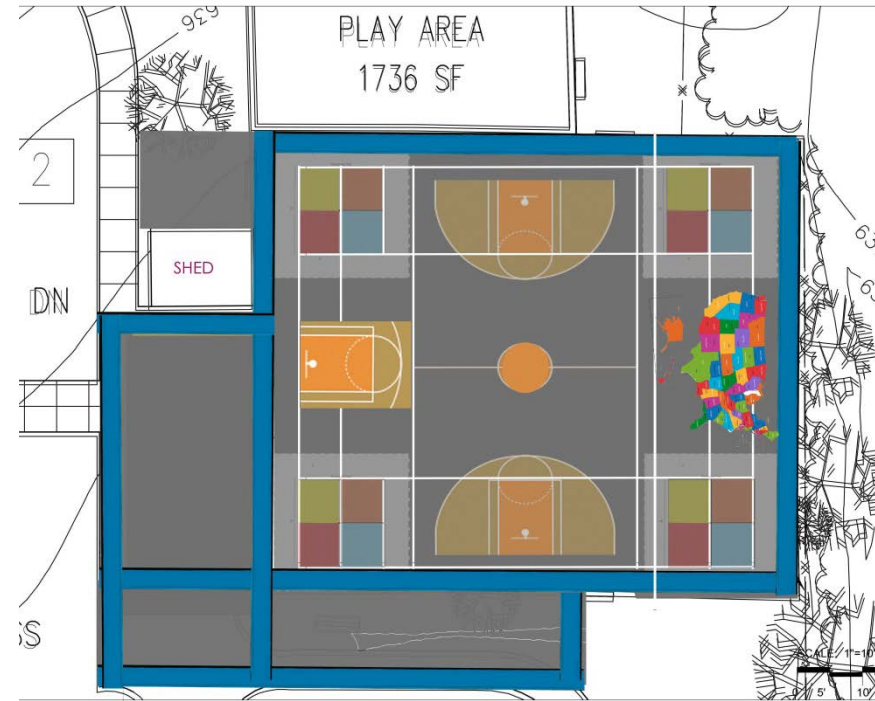


West Park Playground : School Black Top Proposals

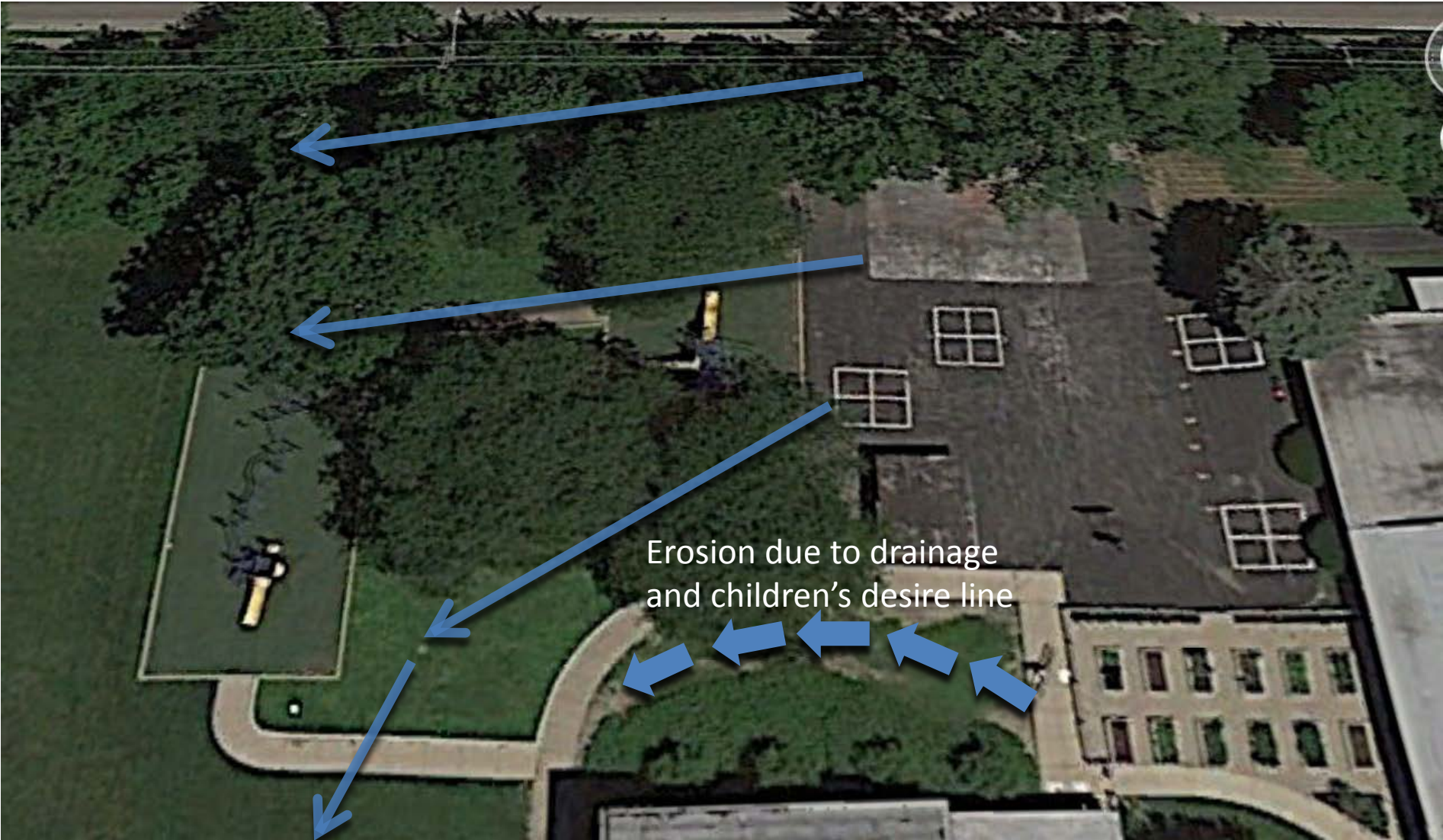
Full Junior Court & Multiple Games



3 Hoops and Simplified Layout



West Park Playground Drainage



Erosion due to drainage and children's desire line

West Park Playground Issues: Slope, Drainage and Erosion



West Park Playground Issues: Slope, Drainage and Erosion



West Park Playground Issues: Slope, Drainage and Erosion



West Park Playground Issues: Slope, Drainage and Erosion



West Park Playground Issues: Slope, Drainage and Erosion



West Park Playground : School and PD Priorities

- Sustainability
- Accessibility
- Upper body/Overhead events
- Buddies Bench
- Use poured-in-place.
- Minimal interactive play panels for 5-12
- Potential Discovery Area to the north of the tennis courts 2-5

Not Acceptable:

- No swings
- No Metal Slides
- Tube Slides/Crawl Tunnels
- Bubble Panels
- Roller and Metal slides
- Wooden Components
- Diggers
- Spring toys

West Park Playground : School and PD Priorities

School and Park District Staff Stated:

- Topography to be highlighted
- Slides and climbing features in topography
- Slides at grade if possible

- School serves 8-10 year olds, requested separate 2-5 year old area
- Nature/Discovery area could serve mainly 2-5 year olds
- Park District could provide woodchips, logs cut into different sizes for climbing, seats, tables, etc.
- Would include boulders

Constructions start date June 12th. Completion before August 10th

West Park Playground : Examples School Liked



Climbing Features and Unusual Paths

West Park Playground : Examples Long Slides



All liked the concept but needs lots of slope

West Park Playground : Examples Slopes Sites



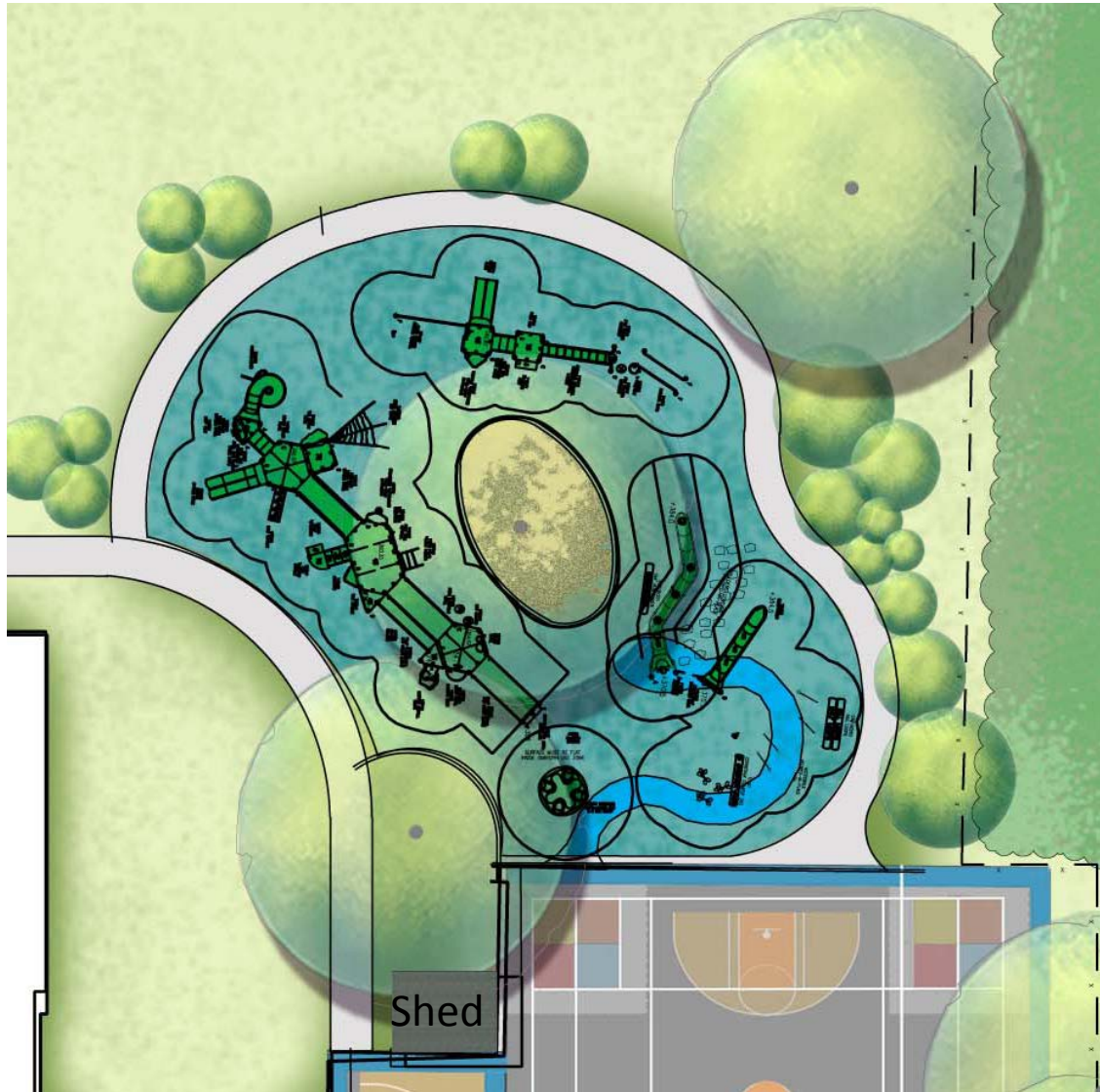
Unfortunately we do not have this much slope

West Park Playground : Examples Slopes Sites

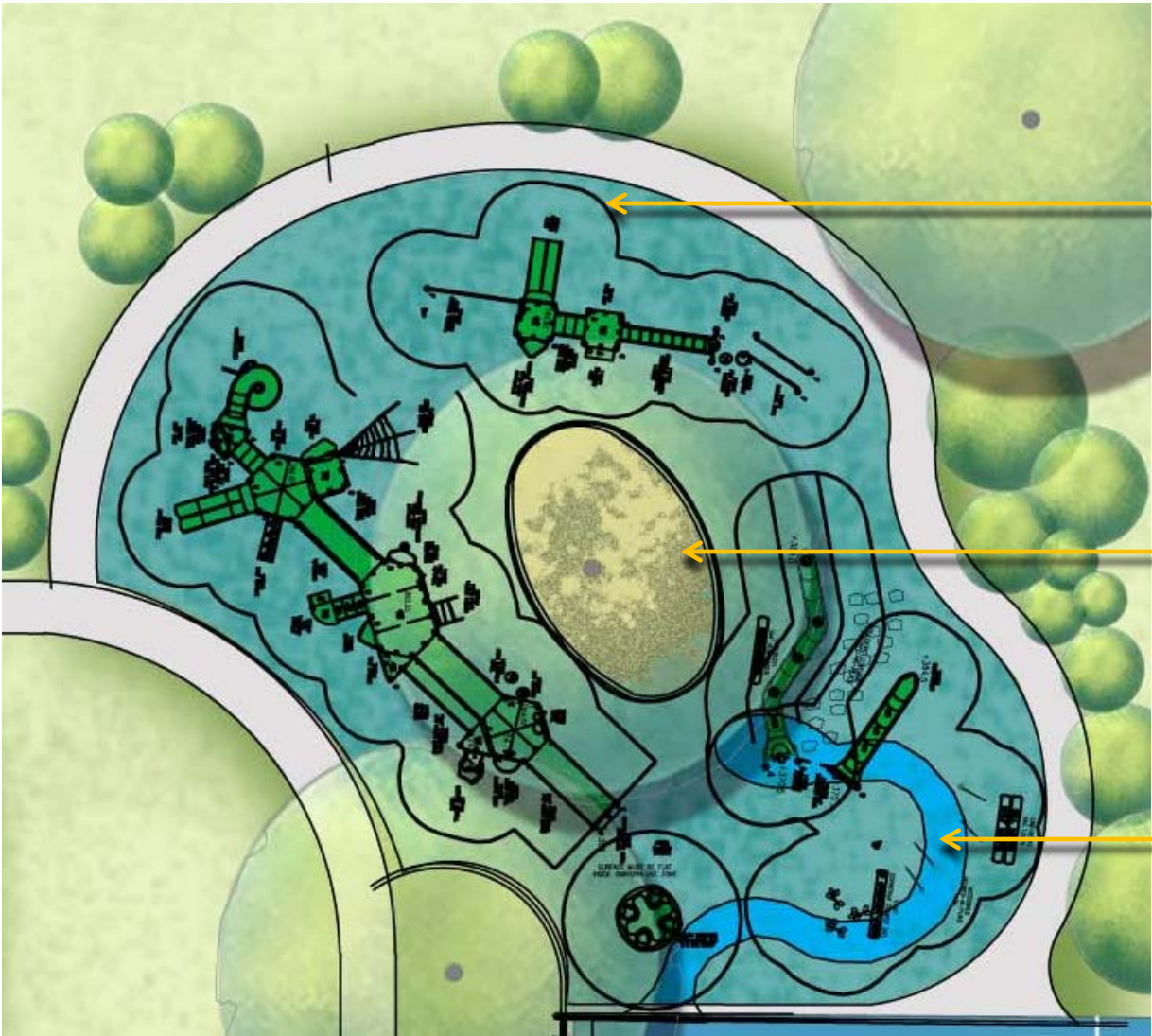


Total existing slope is 5.5 feet over entire playground

West Park Playground : Proposed Plan



West Park Playground : Proposed Plan



Fall Zone

Curb & Mulch around Tree

ADA path to slides

West Park Playground : View Looking West



West Park Playground : View Looking West



OmniSpin

West Park Playground : View Looking South East



West Park Playground : View Looking North



West Park Playground : ADA Equipment



West Park Playground : Looking North East



Colors not updated this slide

Comparison Existing and Proposed

Existing Playground Area – **3,310 S.F.**

Proposed Playground Area – **5,600 S.F.**

Issues: Drainage and Erosion



Erosion could be prevented by adding a fence around this space and timbers from Astor across slope and planting but it is outside of the scope

Issues: Drainage and Erosion



Erosion could be prevented by adding a fence around this space and timbers from Astor across slope and planting but it is outside of the scope

Potential Deck - Tree Protection Not included in the Budget



Tree Protection, Central Feature, Stage, Gathering Place

Potential Deck - Tree Protection Not included in the Budget



Tree Protection, Central Feature, Stage, Gathering Place

Something to think about in the Long Term : Exhibit Wetlands



Consider adding a wetland for stormwater
and to provide a landscape exhibit for the kids
And habitat for birds and Insects

WE HAVE BEEN TRYING TO ISOLATE OURSELVES
FROM NATURE FOR MILLENIA.....

AND WE HAVE ALMOST TOTALLY SUCCEEDED

West Park Discovery Area : Site Proposed Discovery Area



West Park Discovery Area : Site Proposed Discovery Area



West Park Discovery Area : Drainage Issues



West Park Discovery Area : Drainage Issues

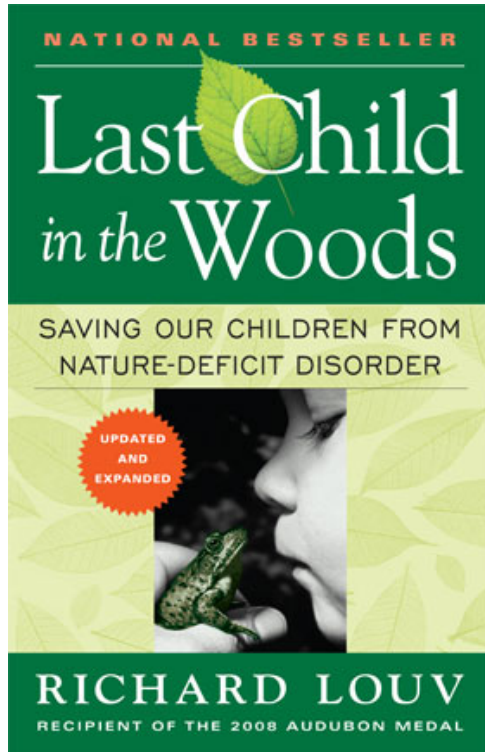
Water in carpark flows north
And ponds in NE corner

Site drains towards future Discovery Area



Old Playground was removed, site is slightly below surrounding grade, water ponds

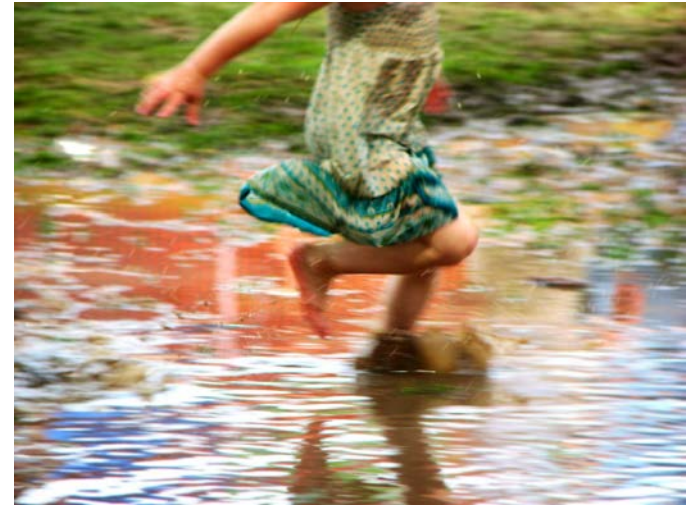
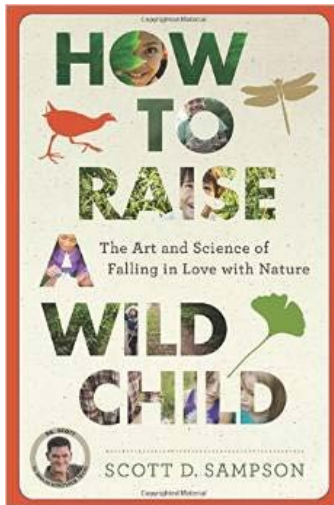
Unstructured Outdoor Recreation: Why is it important



National Movement 2006

No Child Left Inside® is a promise to introduce children to the wonders of nature – for their own health and well-being, for the future of environmental conservation, and for the preservation of the beauty, character and community.”

“For young children, it's mostly about unstructured play.”



Today Scott Sampson of Dinosaur Train and Curator at Denver Museum of Nature

“Research shows that free play is critical for brain growth, body growth, and emotional growth. The outdoors provides this multi-sensory smorgasbord of opportunities to engage, not just on a computer screen, but through sight, sound, touch, and smell.”

“But you have to let your kids get messy.”



WHY CAN'T OUR KIDS HAVE SOMETHING LIKE THIS?





Curving Paths, Mounds, Lots of Trees, Keep Fallen Trees, add Boulders

Inspiration



West Park Discovery Area: What is it?



Coonley School



Mills Park

The Discovery Area will be a bright, welcoming area, sized for young children, where they can explore and interact with the world around them. It is comprised of natural materials: mounds, nooks, wooden steppers, seats/tables, boulders and logs to climb, and tree trunks that will slowly decompose introducing children to the transformational force of entropy.

West Park Discovery Area: What is it?

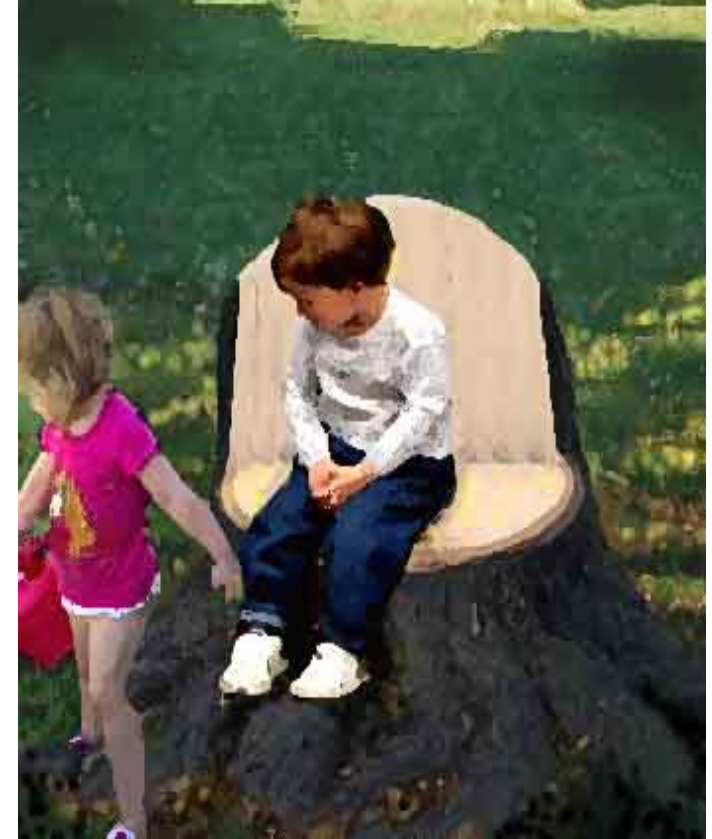


Mills Park

West Park Discovery Area : Elements

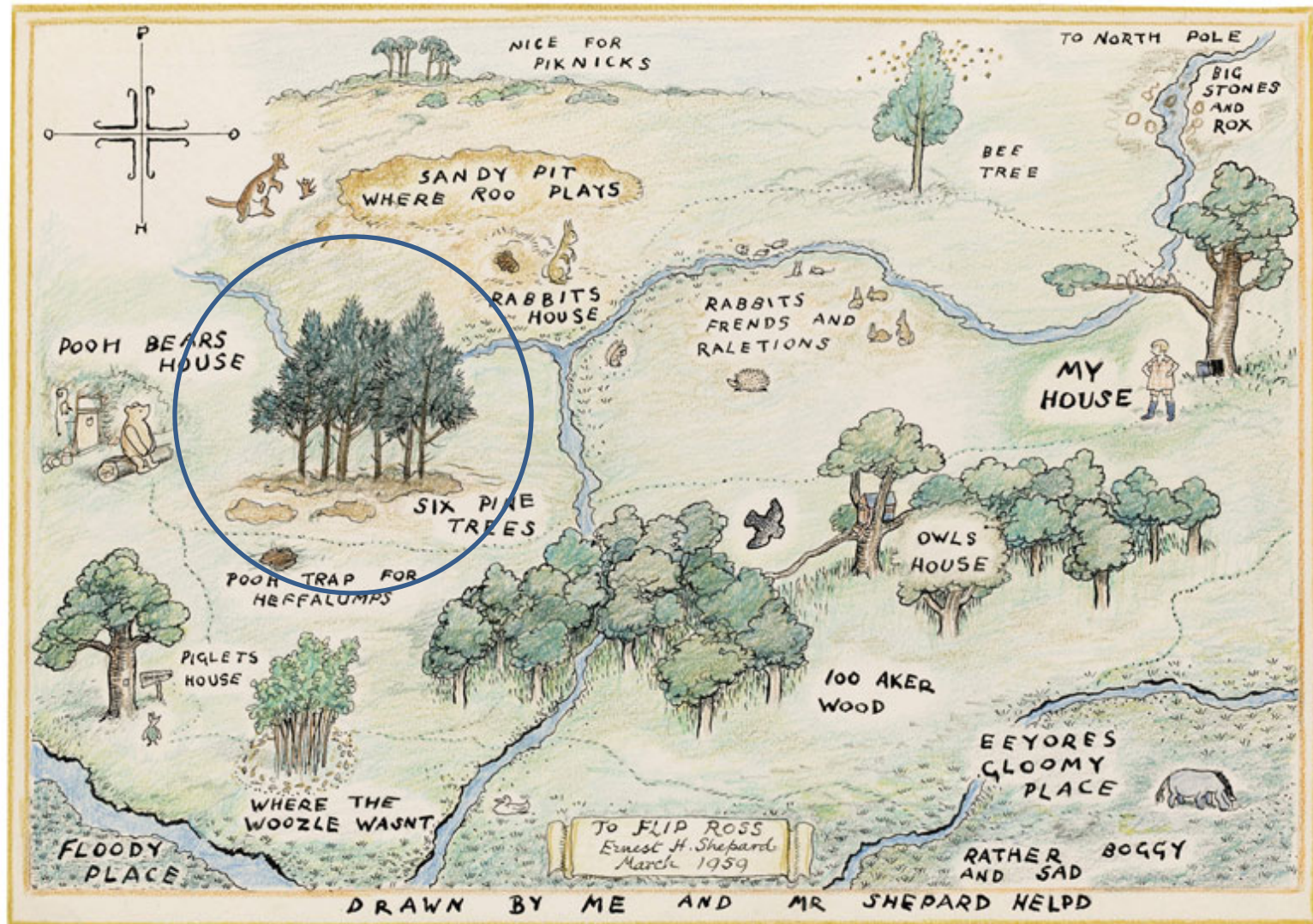


Conservatory Garden Oak Park



Tree Seat Mills Park Oak Park

And Think Like a Child: Create a Landscape Narrative



And Think Like a Child. Create a Landscape Narrative

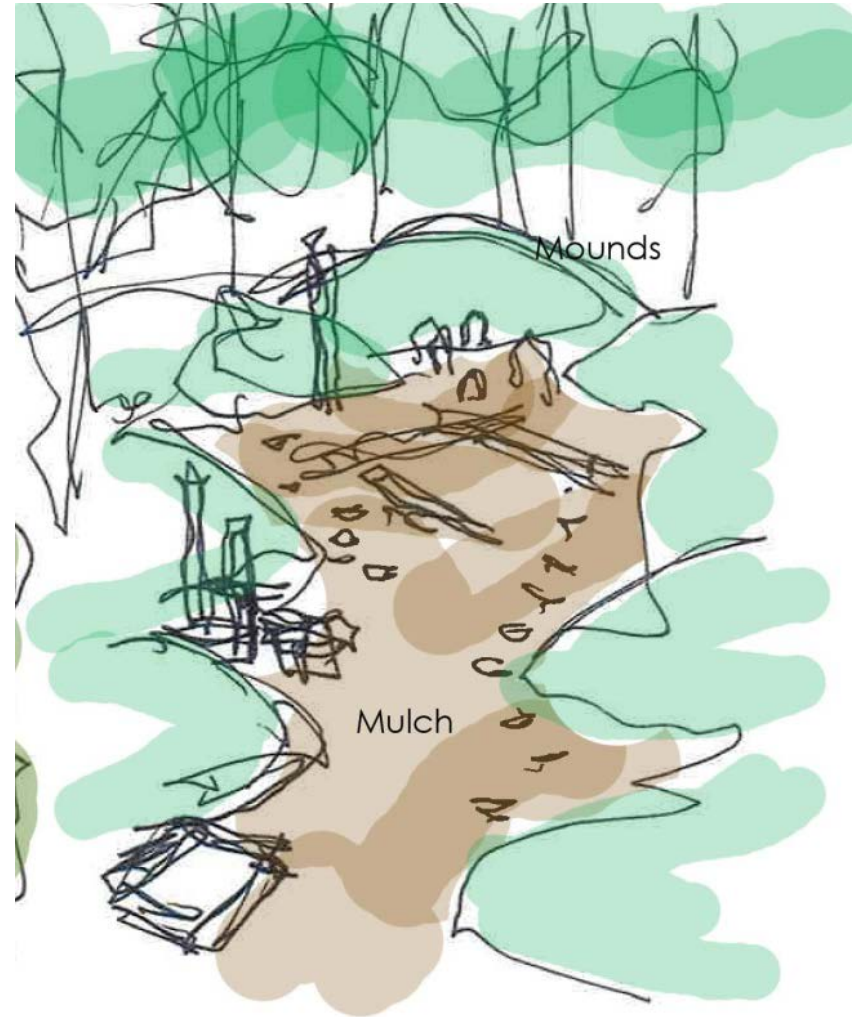


Berms and Distinctive Planting

West Park Discovery Area : Form



Plan view



Using all excavated material on-site

West Park Discovery Area : Elements



West Park Discovery Area : Elements



Boulders

Tree Trunks

Cut into tunnels, seats and a drum

West Park Discovery Area : Elements



West Park Discovery Area : Elements





Boulders with Petroglyphs

If We Get More Ambitious



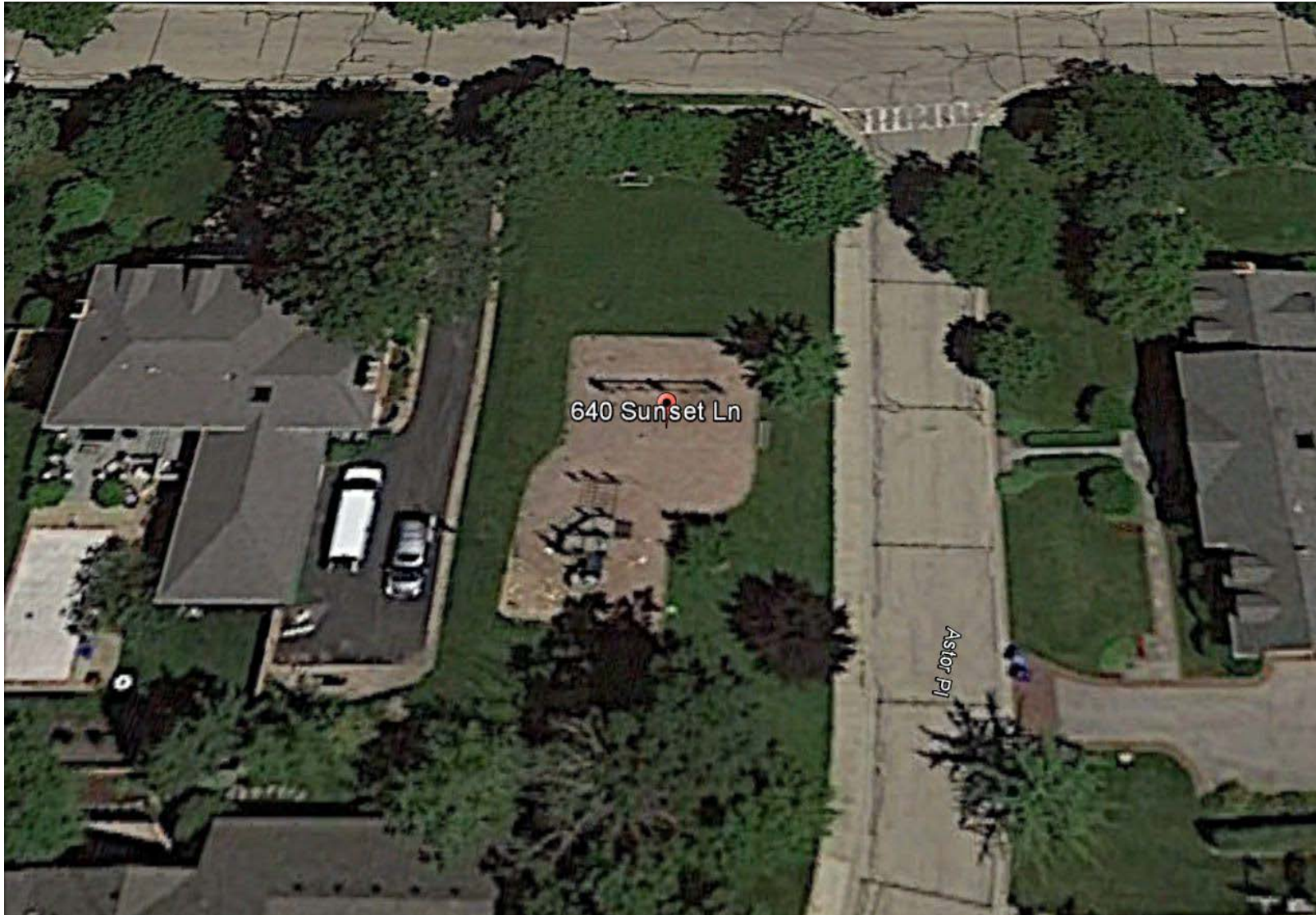
Seating and Art Pieces Perhaps over Time

If We Get More Ambitious



Seating and Art Pieces Perhaps over Time

Astor Park Playground Renovation



Astor Park Playground Renovation



Astor Park Playground Renovation



Astor Park Playground Renovation Option 2



Astor Park Playground Renovation Option 2



We will ensure the equipment doesn't make too much noise

Astor Park Playground Renovation Option 4



Play Panels



Wave Poly Slide



Double Poly Slide



Boogie Board



Astor Park

Astor Park Playground Renovation Option 4



Astor Park Playground Renovation Option 2 and 4





