

**APPROVED**

MINUTES OF APRIL 6, 2017 SPECIAL PROJECTS AND FACILITIES COMMITTEE  
MEETING  
GLENCOE PARK DISTRICT  
999 GREEN BAY ROAD, GLENCOE, ILLINOIS 60022

The meeting was called to order at 6:30 p.m. and roll was called.

Committee Members present:

Andre Lerman, Chair/Commissioner  
Lisa Brooks, Treasurer

Staff present:

Lisa Sheppard, Executive Director/Secretary  
Chris Leiner, Director of Parks/Maintenance  
Mike Lushniak, Director of Recreation/Facilities  
Carol Mensinger, Director of Finance/HR

Committee Members absent:

Steve Gaines, President

Commissioners present:

Dudley Onderdonk, Commissioner  
Seth Palatnik, Commissioner

Members of the Public in attendance who signed in or spoke: Ed Goodale, Josh Lutton,  
Peter Van Vechten

Matters from the Public: There were no matters from the public.

Review of Designs of Lakefront Park: Josephine Bellalta and John McManus gave a presentation reviewing the designs for Lakefront Park, which is attached to these minutes. Discussion ensued.

Public Input on Designs: Peter Van Vechten gave his opinion on the tennis courts, trees, use of natural material, and entryways into the park.

Committee discussion ensued regarding the cost of all projects. This project will be discussed again at a future Special Projects and Facilities Committee meeting.

Discussion on Jefferson and Vernon Playground: Executive Director Sheppard gave a presentation reviewing playgrounds and capital projects, which is attached to these minutes. She shared options to replace the playground, playground usage of various parks, priorities, and budget responsibilities. Discussion ensued.

Committee Direction: Chair Lerman, based on the discussion by the Committee, directed Park District staff to consider discussing replacement of Jefferson and Vernon Playground for the 2018/19 budget cycle.

Other Business: The next Special Projects and Facilities Committee meeting is April 13 at 7:00pm on the Fitness Area and will be followed by a Lakefront Advisory Group meeting.

Adjourn: Commissioner Brooks moved to adjourn the meeting at 8:10 p.m.  
Commissioner Lerman seconded the motion, which passed by unanimous voice vote.

Respectfully submitted,

---

Lisa M. Sheppard  
Secretary



# LAKEFRONT PARK

April 6<sup>th</sup>, 2017



# March 2<sup>nd</sup> Meeting

- **Looked at History of the Park**
- **Local/Regional**
- **Brief Analysis of the Park and Existing Conditions**
- **Potential Projects that Should/Must Take Place**

**Most Important: We listened to Your Ideas  
You had many and you Stated that:  
The Park was for “All of Glencoe”**

# These were the Potential Projects at that time



# However this was what you asked us to Examine

Multi-Use Tennis/Pickle Ball Two Courts (2)

Removal and replanning park with 1 Tennis Court removed

Fitness Components (Not large enough to create regional draw)

Potential of small natural looking fitness elements a possibility

Playground Concepts

- Dedicated Traditional 2-5 with swing similar size and scope to what's there

- Natural Material Concepts (Something Different than Discovery Area)

Drainage Improvements

Park Entry Concepts (How do we invite people in at the corners?)

Use Glencoe Limestone?

Interpretive Signage/Elements

- Stone Stepper Pathway like Mills with history of Glencoe etc?

- Signage Describing Plantings/Birds/Lakefront Ecosystem

Interior Park Pathways/Bluff Pathway

ADA Accessible Pathway

Concrete - Alternate Materials that are maintainable 365 and ADA Compliant?

Park Benches & Swing Benches

Curved Exterior Pathways to replace straight sidewalks

Bike Racks, Drinking Fountain (relocation?)

Donor Paver Area/Plaza Natural Plantings (Be Conservative)

Lakefront Deck

Examine potential opening up of spaces for tree quality

# Tonight

- **The Landscape Aesthetic of Lakefront Park**  
Uncovering and enhancing the “Spirit of Place”
- **Historic Importance of the Park (again)**
- **Barriers in the Landscape**
- **Proposals: From the ideal to moderate intervention**
- **Drainage**
- **A look at Potential Materials**
- **Potential Costs**

## The Landscape Aesthetic of Lakefront Park



# Lakefront Park: Naturalesque Tradition/English Landscape Style



# Lakefront Park: Naturalesque Tradition

Beautiful but completely artificial. Agricultural progression was Woodland to Farmland with Hedgerows and Trees



# Lakefront Park: Naturalesque Tradition

Clearing the land: Gaelic: Fuadach nan Gàidheal, the “Eviction of the Gael”, 18th /19th Centuries

**1792: known to Gaelic-speaking Highlanders as the Bliadhna nan Caorach “Year of the Sheep”**



# Lakefront Park: Naturalistic Tradition

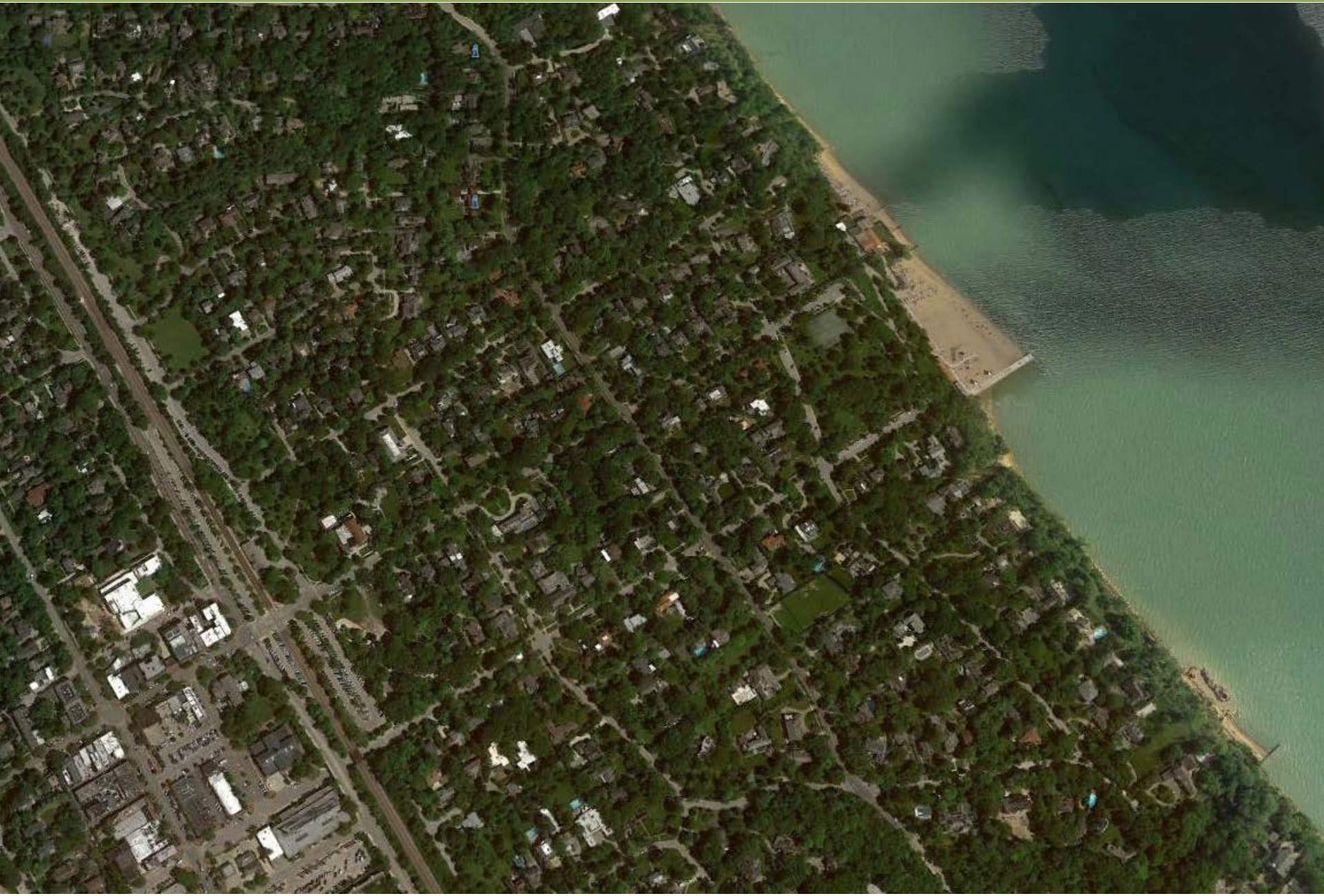


Sheep eat saplings, shrubs & grass to the nub leaving only larger mature trees & few hedgerows

# Capability Brown turned it into an Exquisite Aesthetic



# Lakefront Park: Importance of the Park



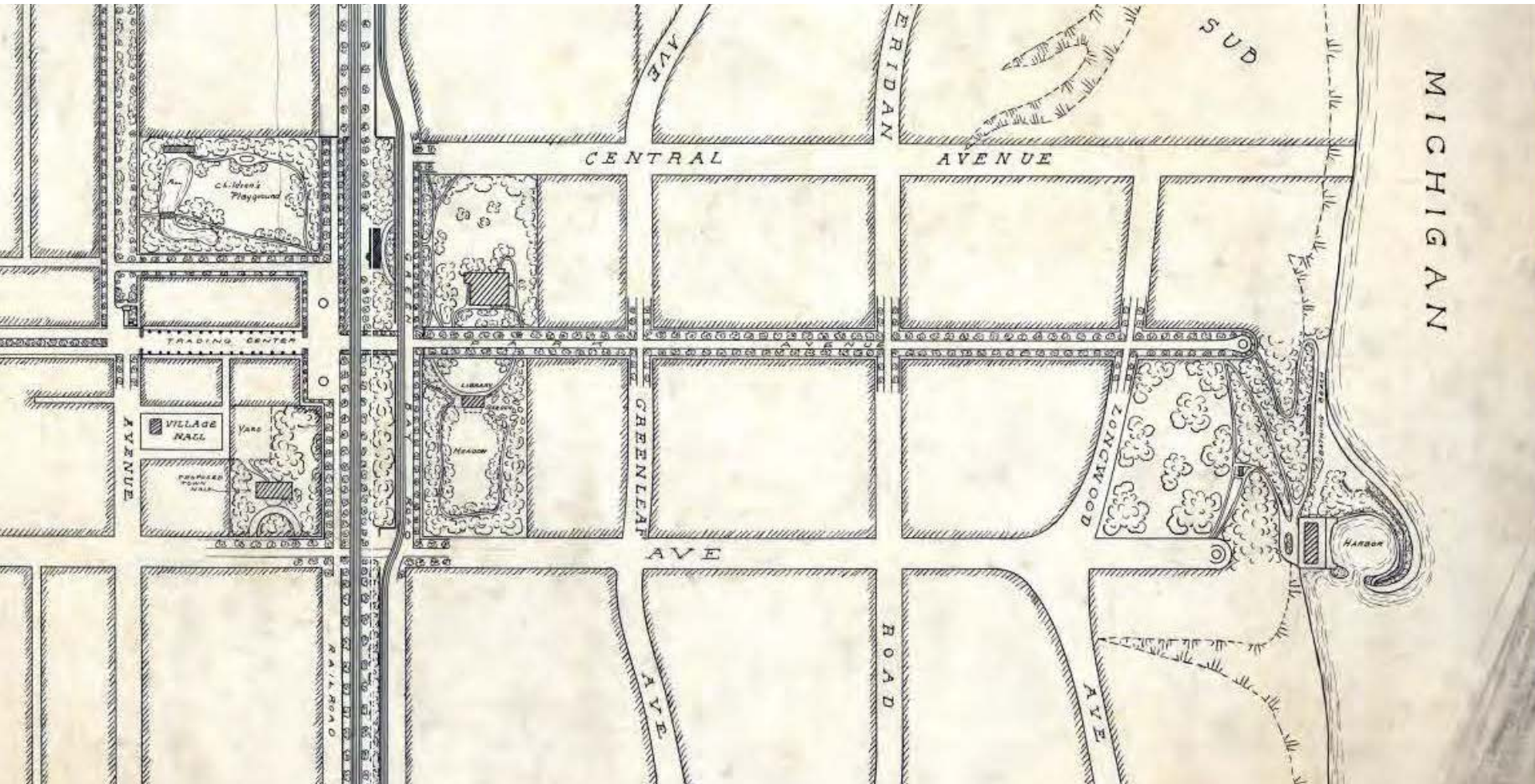
# Lakefront Park: Dedicated in 1867

Historic Link : From the Beginning Train Station & Downtown  
to the Park and Lakefront



# Lakefront Park: Importance of the Park

Frank Lloyd Wright and Jens Jensen worked together in Glencoe



Jens Jensen 1912



The Arrival on Park is Compromised so we are showing Hazel



View from Hazel

# Lakefront Park: Importance of the Park



**Pre-Settlement Oaks**

# Lakefront Park: Importance of the Park



# Lakefront Park: Importance of the Park



# Glencoe's Sesquicentennial (150<sup>th</sup> birthday) in 2019



**Feb. 22, 1940: Glencoe Park District workmen relocate a 60-foot elm tree from a school yard to its new home at Central School**

# Lakefront Park: Conflict of Styles



# Lakefront Park: Conflict of Styles



# Lakefront Park: Barriers in the Park

“A good park should allow you to both see and walk through it. In many new parks, I feel like a victim of planning, forced to navigate an obstacle course just to get through”.

Peter Kantz, Congress for the New Urbanism (CNU)



# Lakefront Park: Barriers in the Park



“forced to navigate an obstacle course just to get through”

# Lakefront Park: Barriers in the Park



“forced to navigate an obstacle course just to get through”

# Lakefront Park: Barriers in the Park



“forced to navigate an obstacle course just to get through”

# Lakefront Park: Barriers in the Park



# Lakefront Park: Barriers in the Park



The Park is Part of Glencoe History and Pre-settlement

# Public Tennis Courts National Parks & Recreation Association

---

The National Recreation and Park Association (NRPA)  
Recommends 1 tennis court per 2,000 people

Glencoe Population 8,900 in 2014 equals 4.45 tennis courts

There are 11 Park District tennis courts in Glencoe  
More than double the recommended number

# Public Tennis Courts Nationally Trust for Public Land

Tennis Courts per  
10,000 Residents

Tennis Courts per  
1,000 Residents

Minneapolis	4.5	.45
Omaha	4.4	.44
Greensboro	4.0	.4
Atlanta	3.9	.39
Boise	3.8	.38
Madison	3.8	.38
Virginia Beach	3.6	.36

Glencoe 1.27 per 1000 Residents

# Lakefront Park: Majority of Barriers





# “Rain-spotting” of Trees - Potential to Open Up Spaces



---

# THE IDEAL

# Today



# New Entryways, Curvilinear Paths, 0 Tennis Courts, Opening Up Spaces



# Lakefront Park: ADA Compliant Path



“Shouldn’t there be some access so we can experience the trees?”

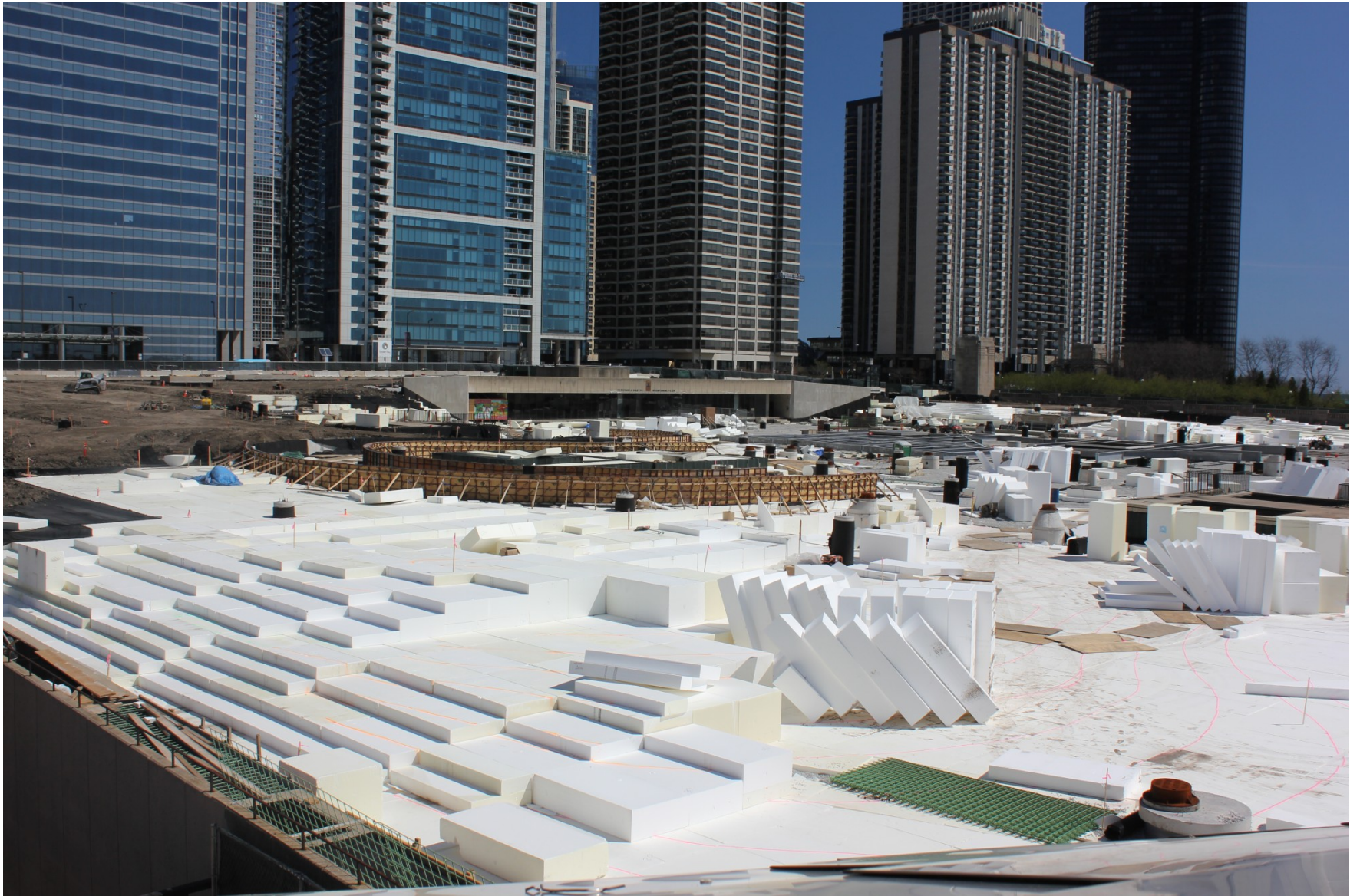
# Lakefront Park: ADA Path



# Instead of the Courts: Kids love Mounds



# Lightweight block for Mounds





# Lakefront Park: Mounds very Low and Slightly Shaped



Events in the landscape



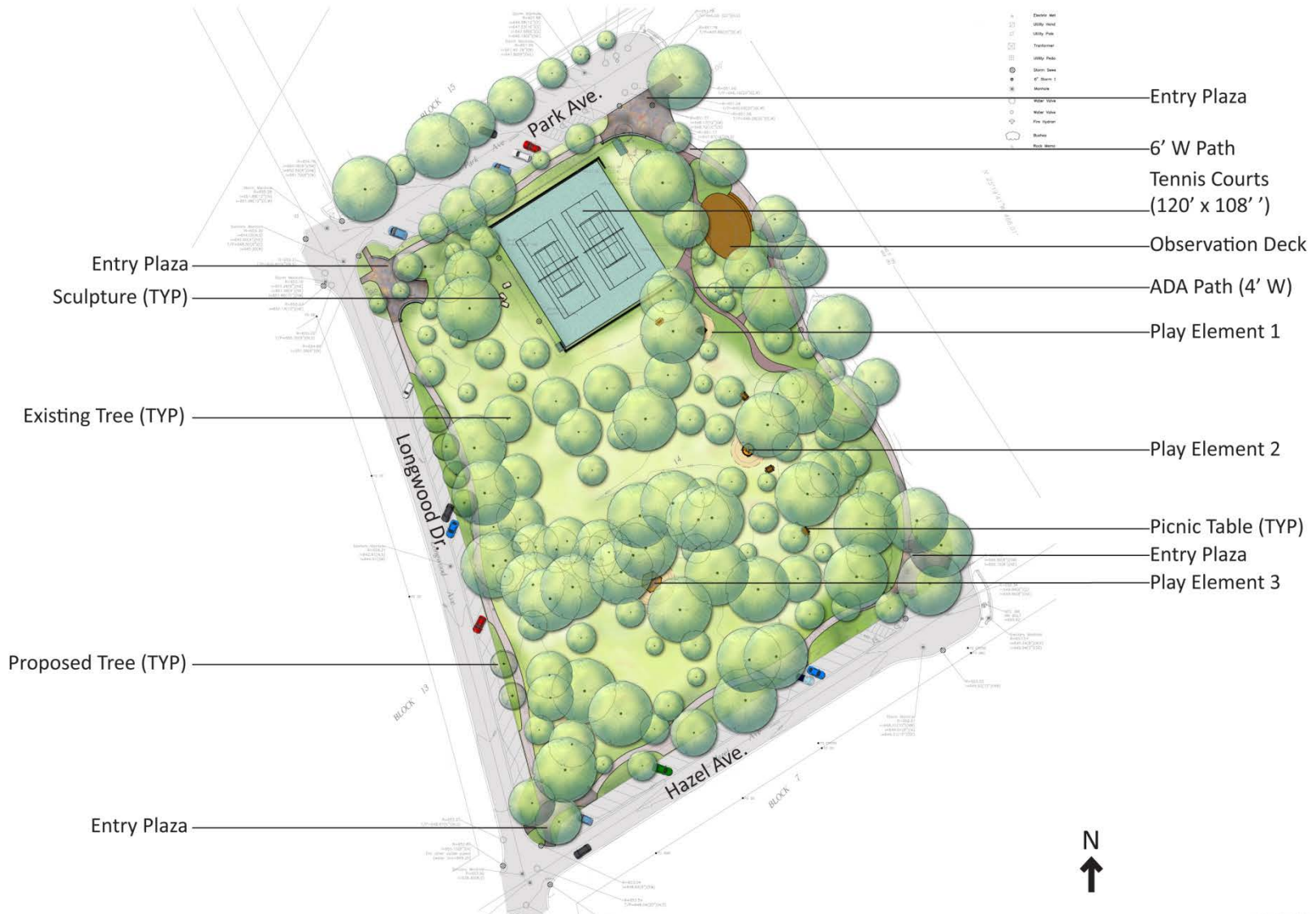
---

# More Moderate Intervention

# New Entryways, Curvilinear Paths, 2 Tennis Courts, Opening Up Spaces



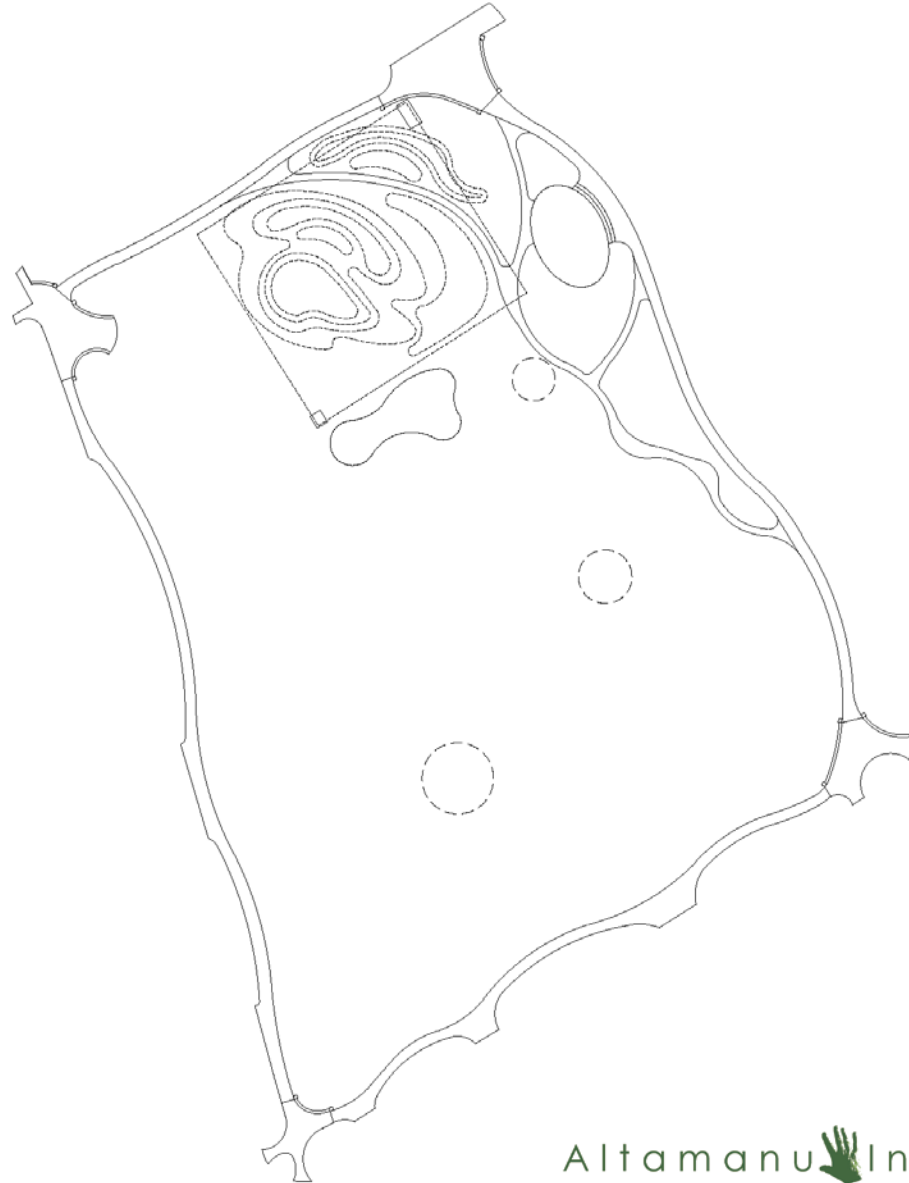
# Lakefront Park: Conceptual Plan A



# Lakefront Park: Conceptual Plan B

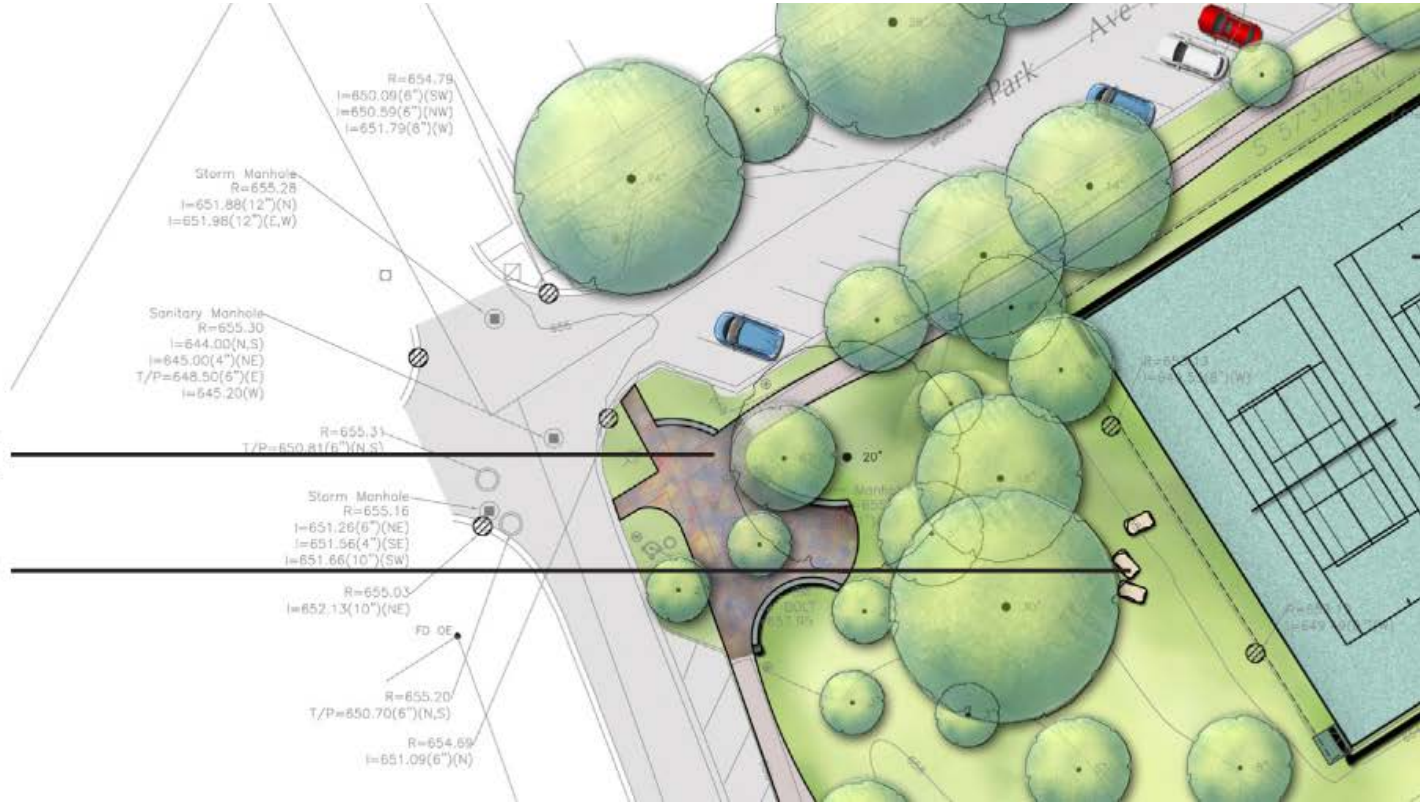


# Lakefront Park: Pathway System



# Lakefront Park: Tour of the Proposal North Side

Entry Plaza  
Sculpture (TYP)



# Lakefront Park: Importance of Entryways



“OPEN ARMS AND ALSO A PLACE”

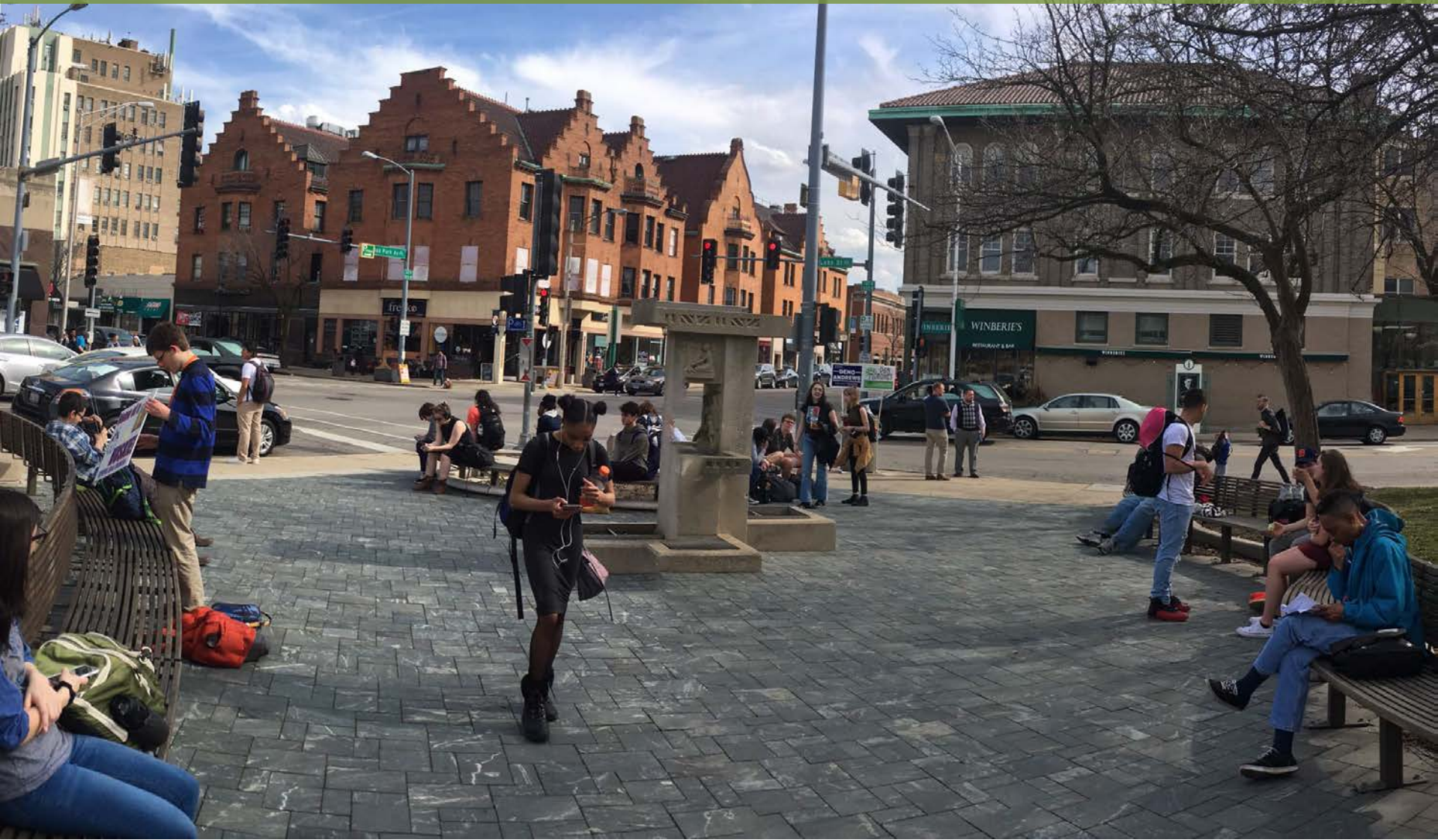
Altamanu  Inc.  
landscape architecture + urban design + planning

SMP GROUP  
Design Associates, LLC





# Lakefront Park: Importance of Entryways



# Open Arms of Welcome, Compression, Destination in View



# Open Arms of Welcome, Compression, Destination in View



# Lakefront Park: North West Entry Existing



# Lakefront Park: North West Entryway Scheme 1



# Lakefront Park: Donation Opportunities



# Donor Opportunities in each Entry Plaza



# Lakefront Park: Donor Opportunity

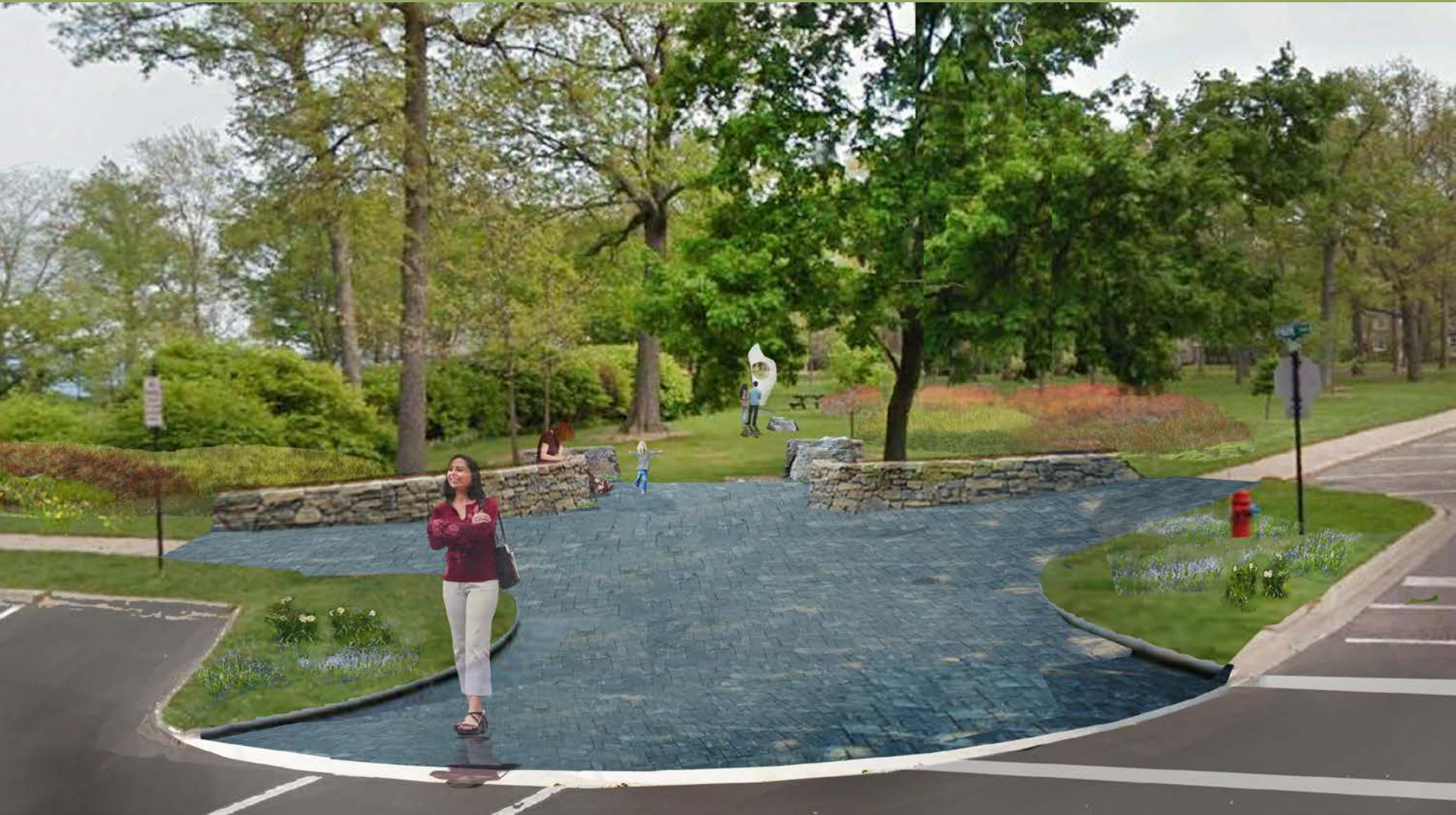




# Lakefront Park: North West Entryway Existing



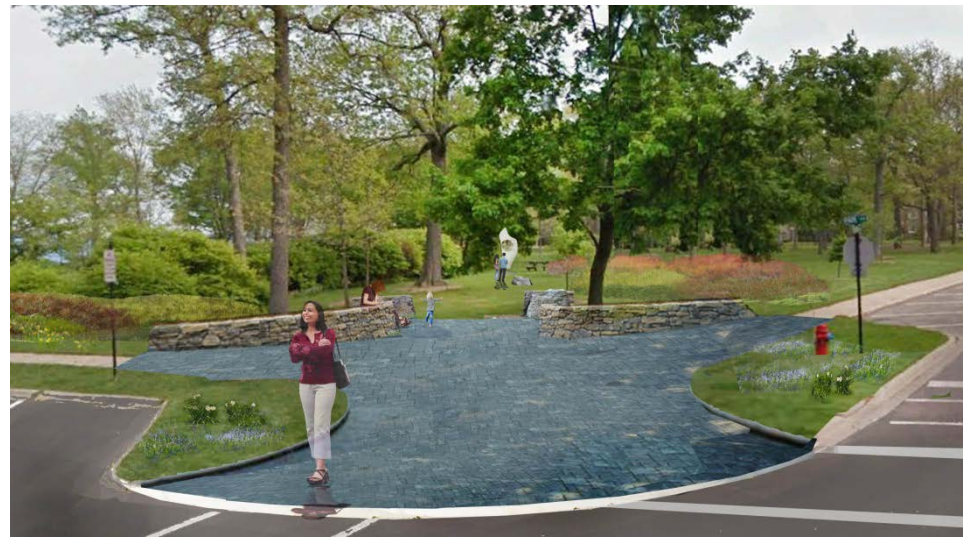
# Lakefront Park: North West Entryway Scheme 2



# Lakefront Park: North West Entryway



Scheme 1

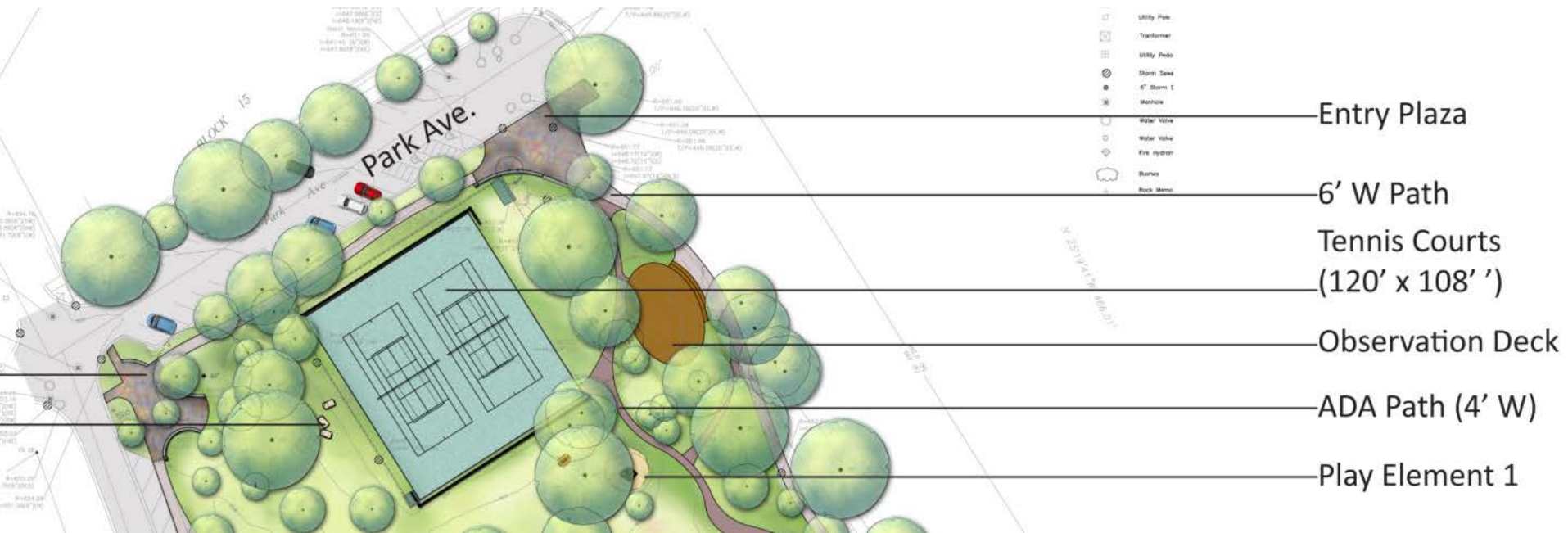


Scheme 2

# Lakefront Park: North Side Existing



# Lakefront Park: North Side Conceptual Plan A



# Lakefront Park: North East Entry



# Lakefront Park: North East Entry



“forced to navigate an obstacle course just to get through”

# Lakefront Park: North East Entry



Open Arms and a Place



# Lakefront Park: North East Entry



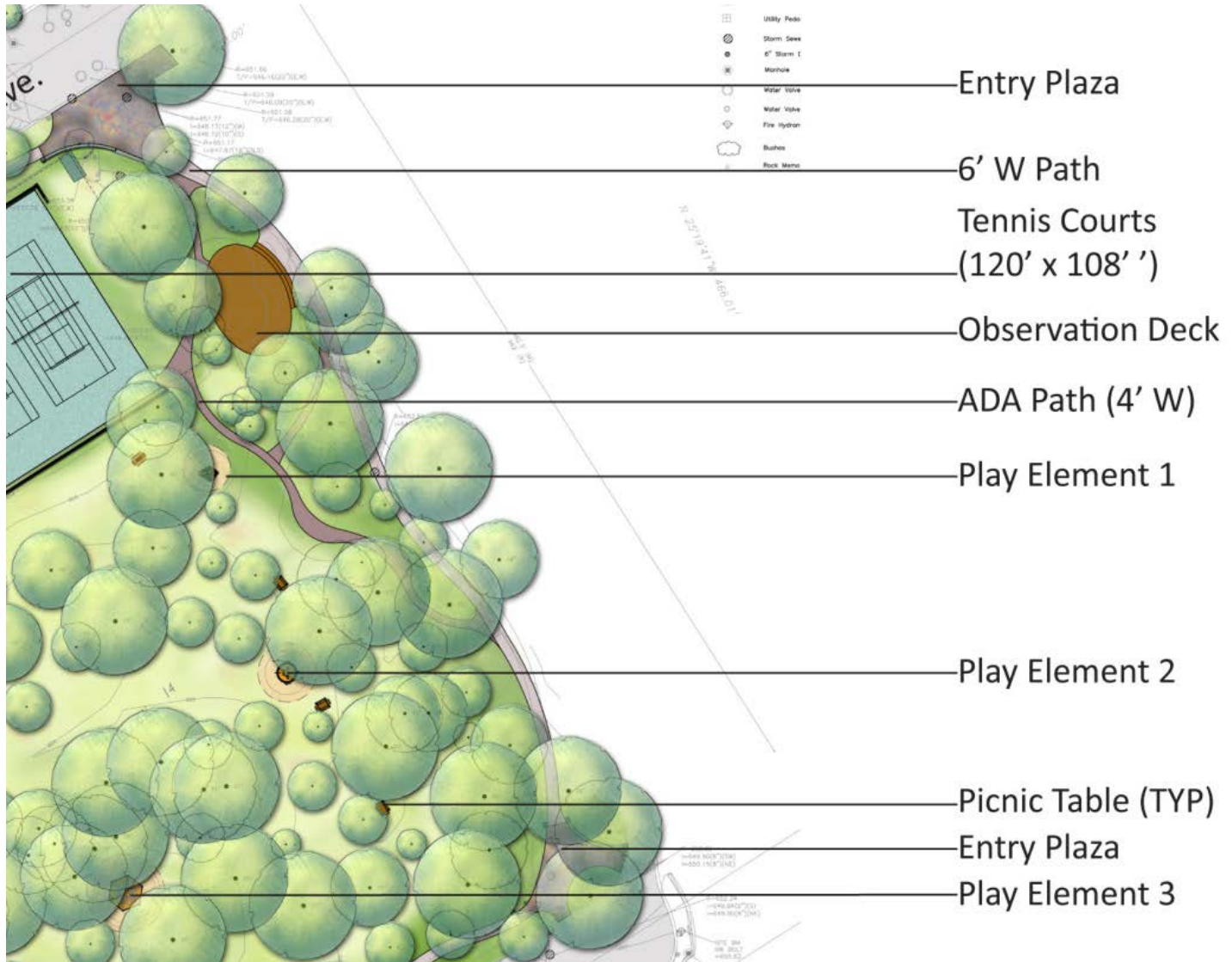
# Lakefront Park: Sign and Plaque



# Lakefront Park: North East Entry



# Lakefront Park: East Side Lakefront Path



# Lakefront Park: Pull Path Back from Edge



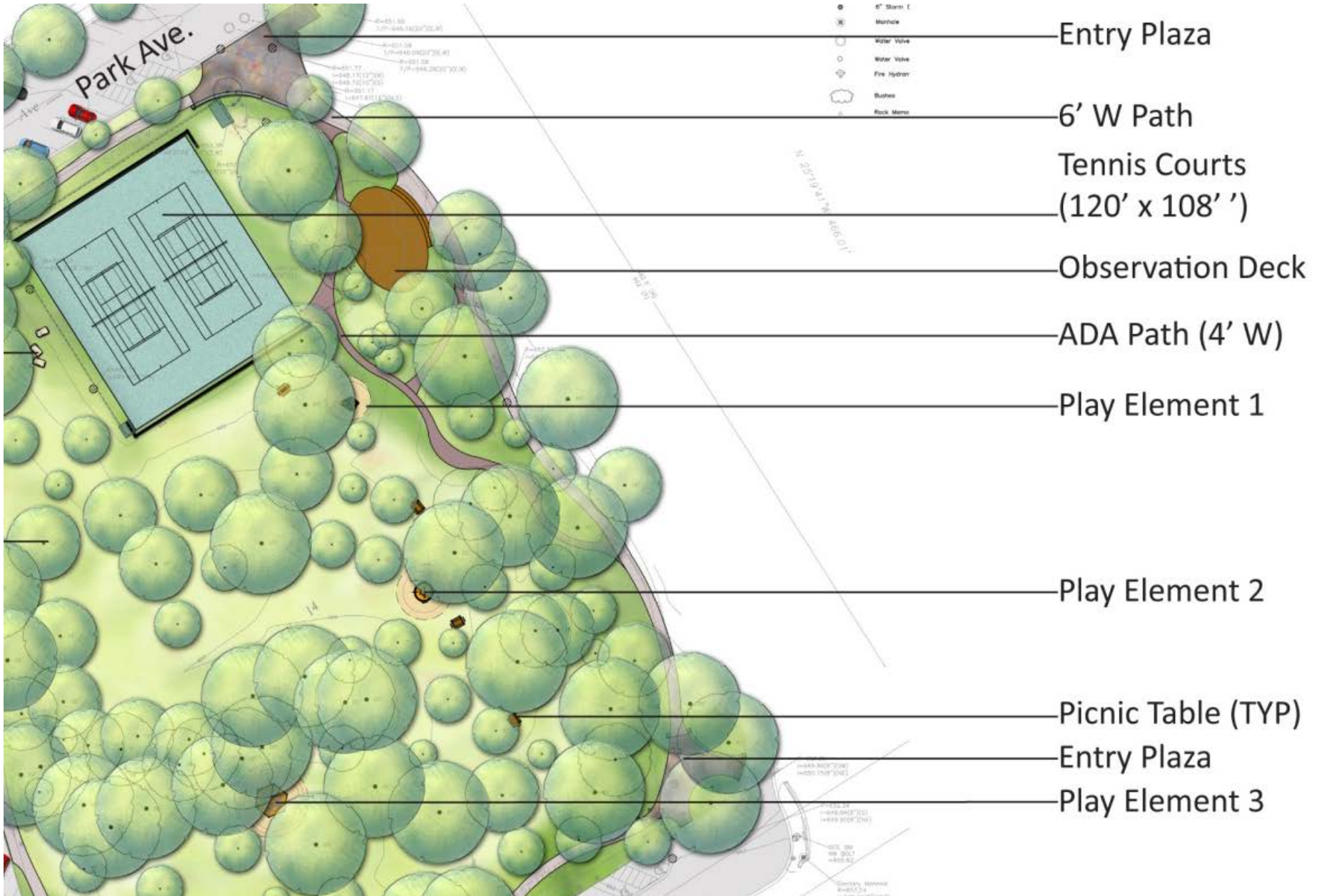
# Lakefront Park: Deck Composite Material and Stone Edge



# Lakefront Park: Mini Decks

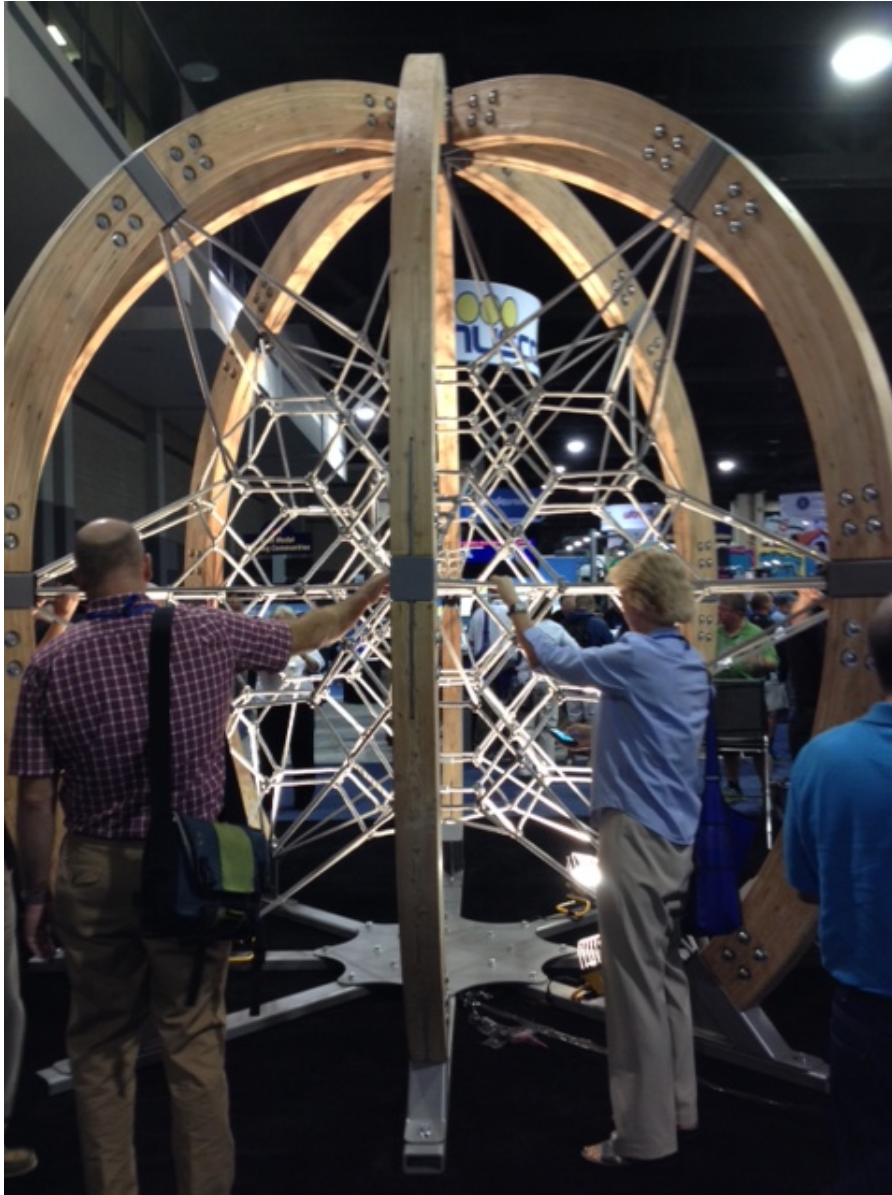


# Lakefront Park: Play Elements in the Landscape

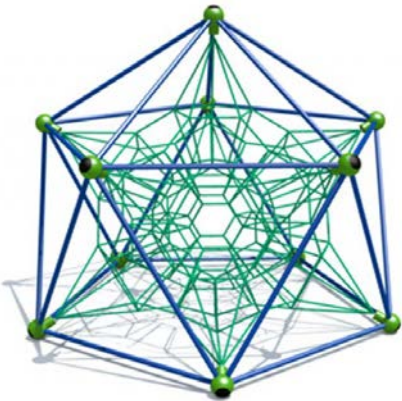
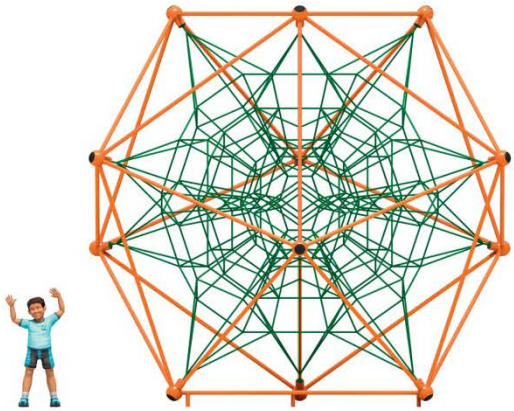




# Lakefront Park: Play Elements



# Lakefront Park: Sculptural Play Elements in the Landscape

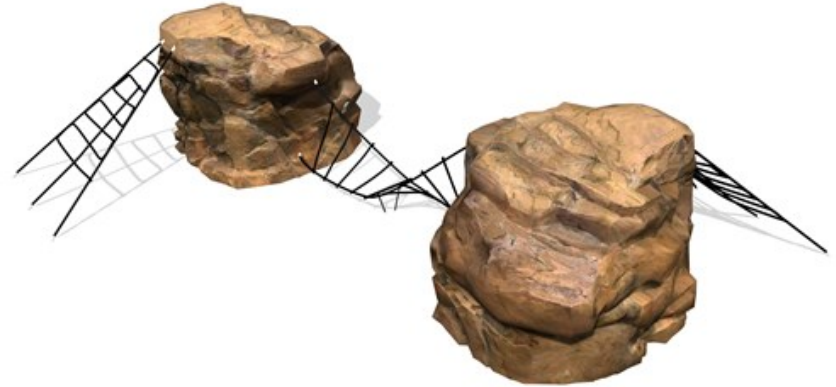


LARGE PLAYWEB (PLAYWORLD)

# Lakefront Park: Sculptural Play Elements in the Landscape



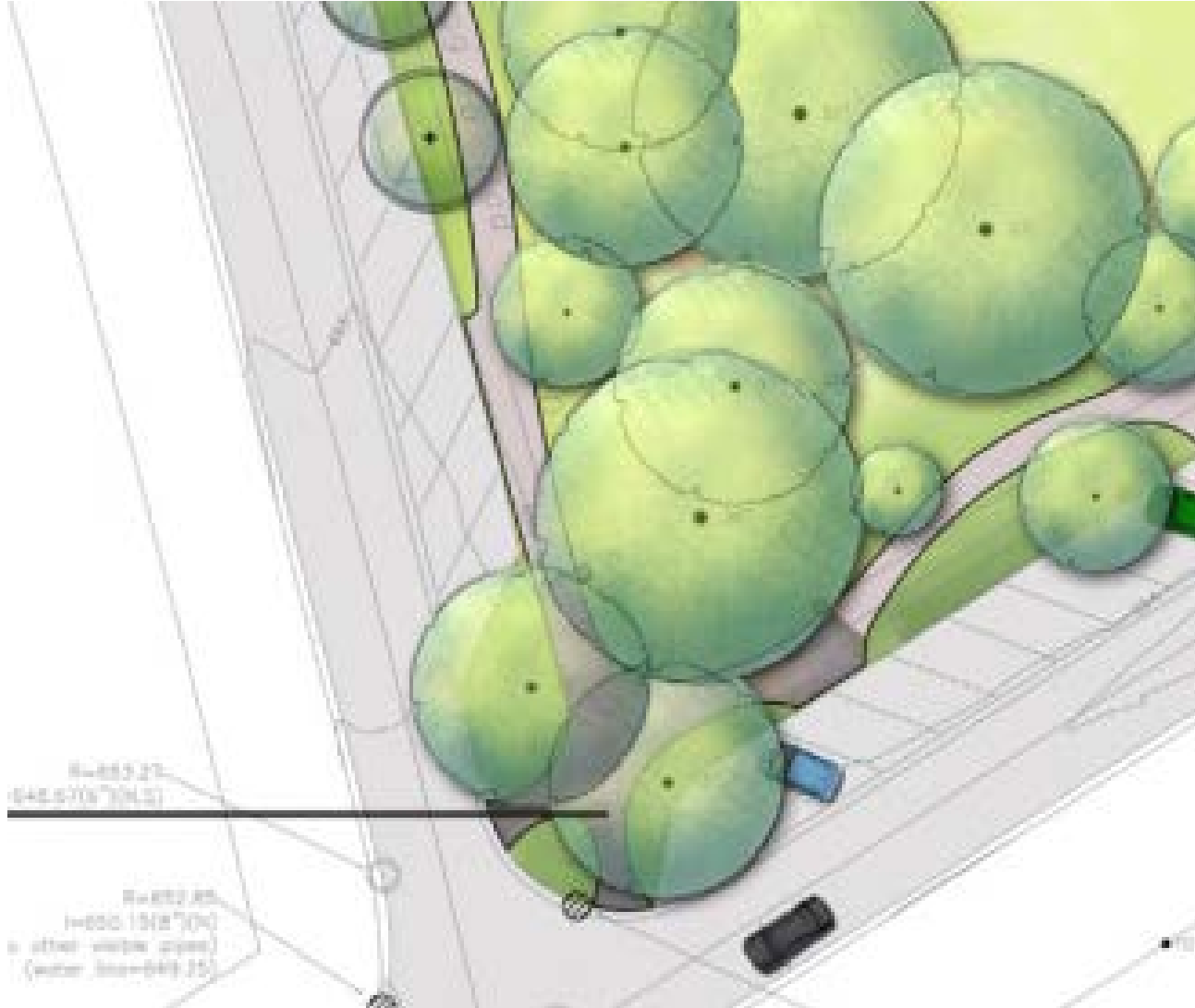
# Lakefront Park: Play (Nature Based)



# Lakefront Park: Or more regular Playground 2 - 5



# Lakefront Park: South West Entry



# Lakefront Park: South West Entry



# Lakefront Park: South West Entry





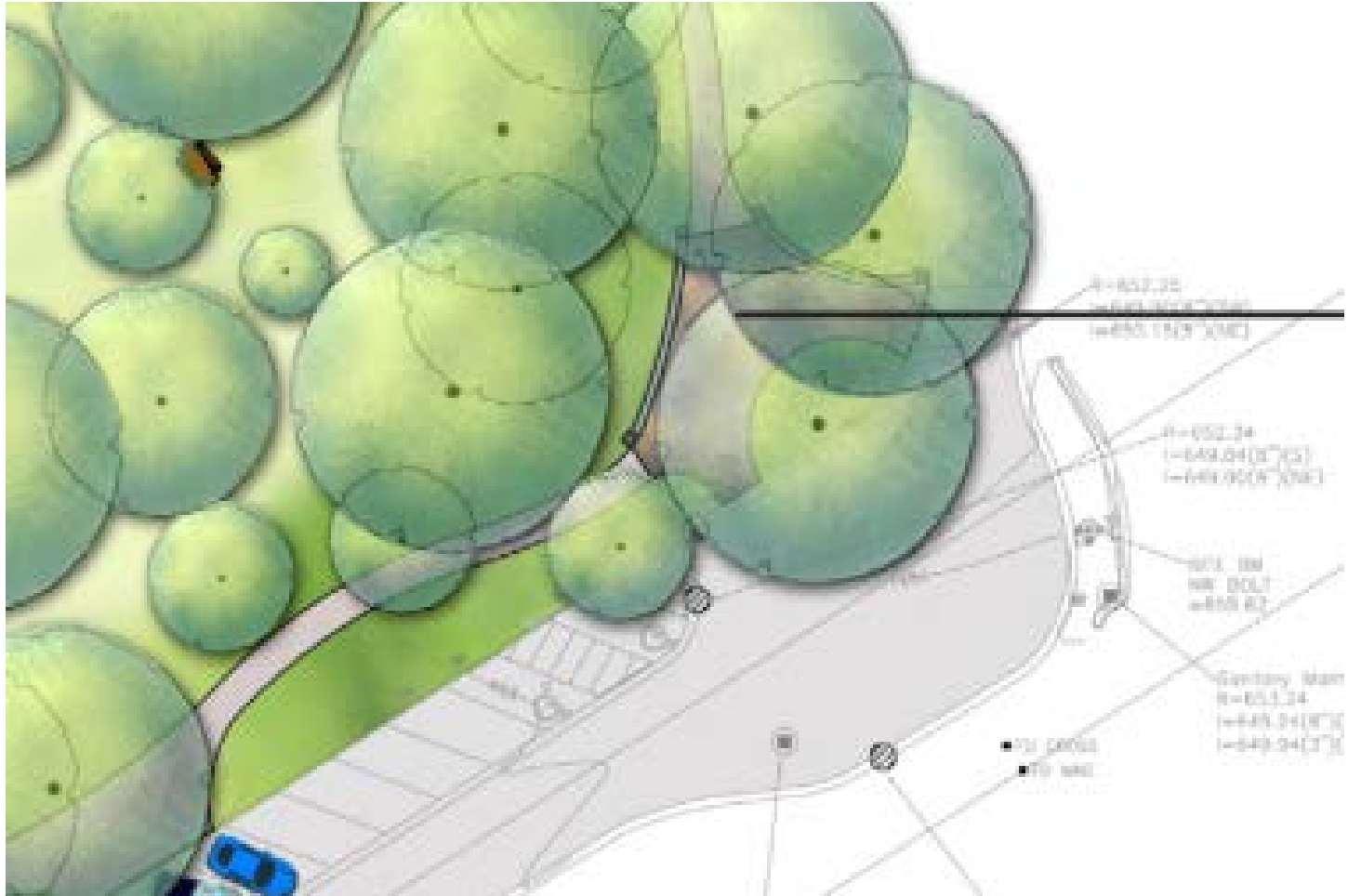
# Lakefront Park: South West Entry



# Lakefront Park: South West Entry



# Lakefront Park: South East Entry



# Lakefront Park: South East Entry



Water Flows Across Paths in Park and Along Hazel Ave

# Lakefront Park: South East Entry



# Lakefront Park: South East Entry

Deal with drainage, make a pleasing entry/exit to the path system and make a "Place"



# Lakefront Park: South East Entryway

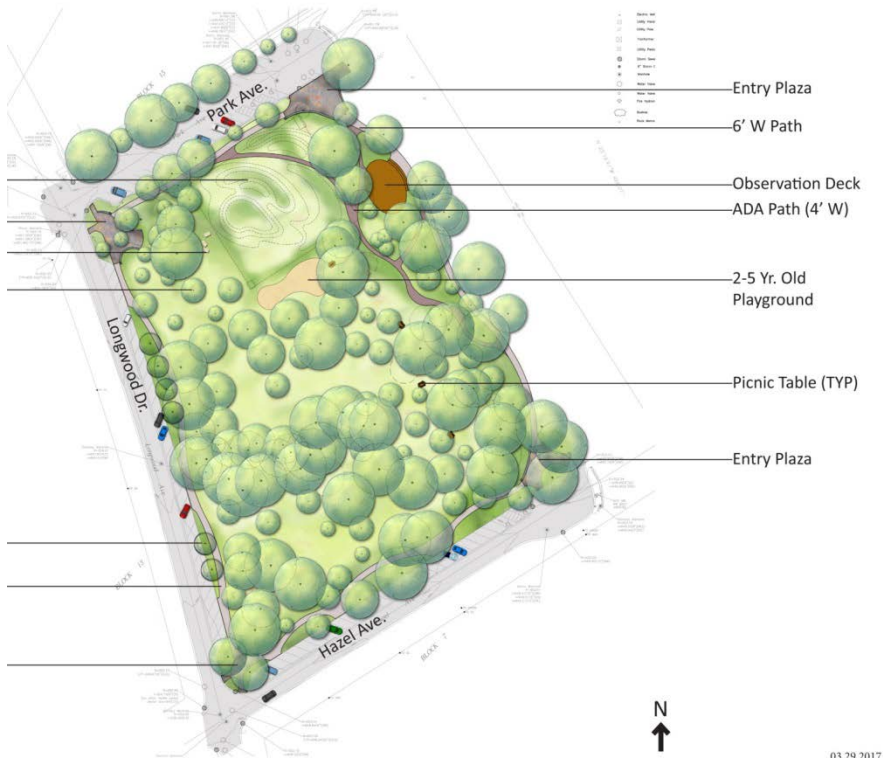


# Lakefront Park: South East Entryway





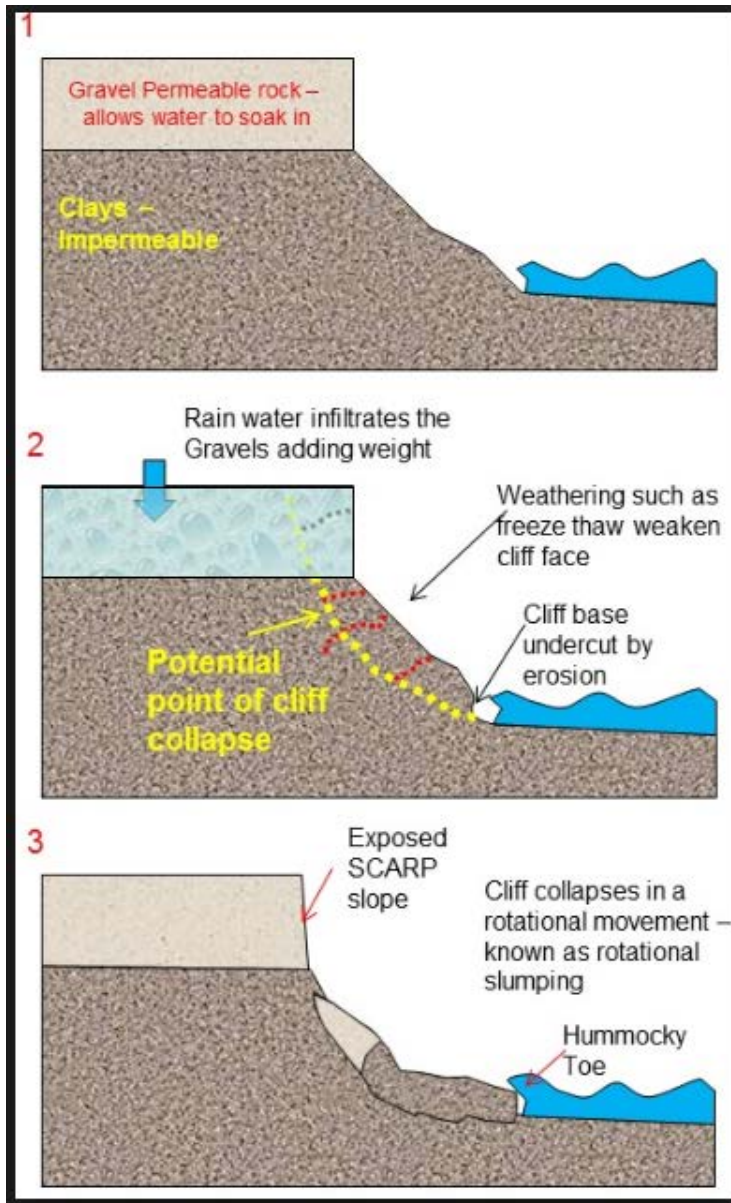
# Lakefront Park: Conceptual Plans A & B



# Lakefront Park: Drainage



# Lakefront Park: Drainage



# Lakefront Park: Engineering Recommendation

- Reinforce the toe of the bluff and to add wick-drains
- Wick-drains carry water from the top directly to the bottom
- Relieve water pressure acting on the face of the bluff
- Reinforce the toe of the bluff to stop the bluff from sliding
- Improve existing storm sewers; help carry water away from the bluff
- Limit infiltration.

# Lakefront Park: Interpretive Signage



# Lakefront Park: Interpretive Signage



# Lakefront Park: Winter Color and Form

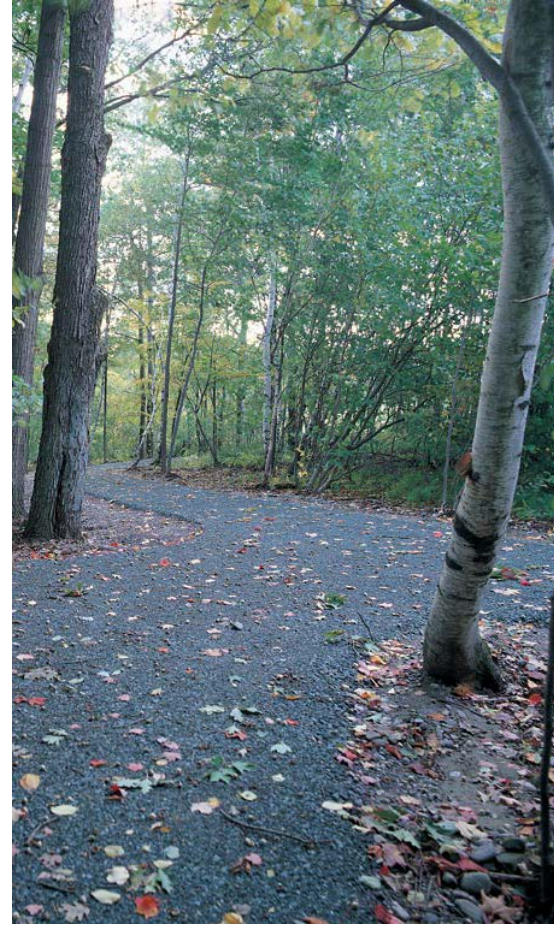
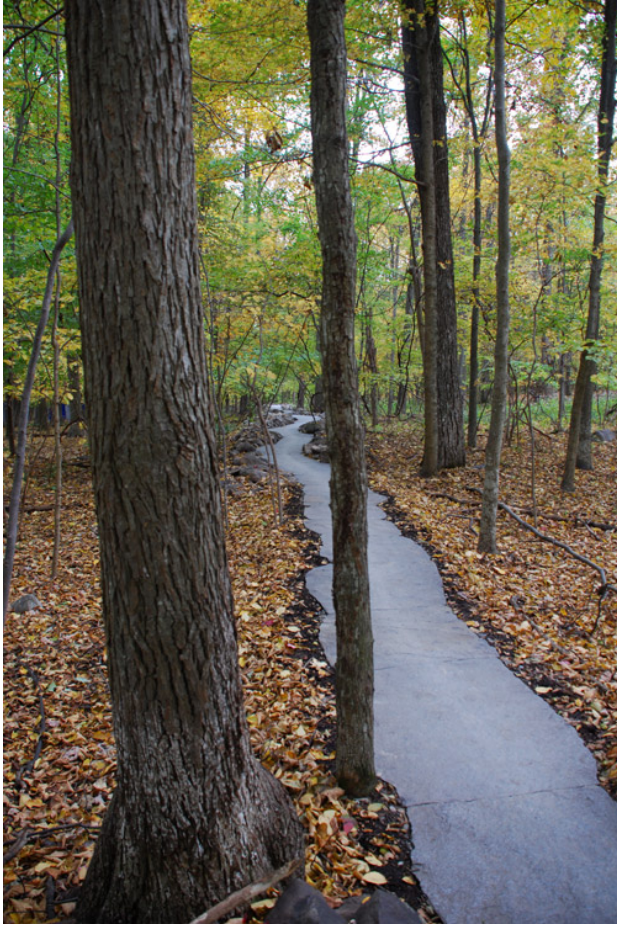


# Lakefront Park: Butterfly Station





# Lakefront Park: Pathway Materials



# Lakefront Park: Pathway Materials

## ROMPOX® - PROFI-DEKO



The professional grit and gravel hardener

2 component synthetic resin binding agent  
for washed, dried and dustfree gravel and grit (grainsize from approx. 2-10mm)<sup>1)</sup>



### PROPERTIES

- for pedestrian loads
- for joint depths from 30mm
- highly water permeable
- ideal for pathway construction and tree pits
- water resistant
- for professional use
- strengthens gravel and grit (grainsize from approx. 2-10mm)<sup>1)</sup> (not suitable for white stones)
- high strength
- can be applied from > 0°C surface temperature

Colour: transparent

**ROMEX®**  
Professional Gravel Hardener

CELL-TEK  
Geosynthetics

ORDERS / INFO CALL  
410-721-4844



LSG SERIES | GRAVEL-LOK | PRODUCTS | CAD / DATA SHEETS | VISUAL | DEALERS | CONTACT | MORE

### Gravel-Lok™ Natural Pebbles

For your convenience, we also offer clean, washed pebbles for use with Gravel-Lok.

Call or e-mail for more information.  
NOTE: Natural stone color varies by lot.



PEBBLE STYLE: YORKTOWN  
SIZE: 1/8" or 3/8" PEA  
GRAVEL-LOK CLEARBOND



PEBBLE STYLE: ROCKLEDGE  
SIZE: 1/8" or 3/8" RIVERLACK  
GRAVEL-LOK CLEARBOND

# Lakefront Park



