

APPROVED

MINUTES OF JULY 10, 2018 SPECIAL PROJECTS AND FACILITIES COMMITTEE
MEETING
GLENCOE PARK DISTRICT
999 GREEN BAY ROAD, GLENCOE, ILLINOIS 60022

The meeting was called to order at 7:00pm and roll was called.

Committee Members present:

Dudley Onderdonk, Chair/Treasurer
Lisa Brooks, President
Stefanie Boron, Vice President
Steve Gaines, Commissioner
Josh Lutton, Commissioner

Staff present:

Lisa Sheppard, Executive Director/Secretary
Chris Leiner, Director of Parks/Maintenance
Bobby Collins, Director of Recreation/Facilities

Members of the Public in attendance who signed in or spoke: Caleb Barth, John McManus, Edward Torrez

Matters from the Public: There were no matters from the public.

Discussion on Lakefront Park / Glencoe Beach Bluff Study: Executive Director Sheppard introduced John McManus of Altamanu stated that preliminary findings will be shared tonight, not the final report. John McManus relayed Board directives, water effects on the bluff, the bluff's condition. Mr. McManus introduced Baird's Marine Engineer Caleb Barth who addressed surface water management and erosion, bluff slope stability, conclusion, and recommendations. Mr. Barth answered commissioner questions. Edward Torrez of Bauer Latoza Studio gave observations of the Halfway House and the Beach House. Mr. Torrez answered commissioner questions. All presentations are attached to these minutes.

The final report will be presented to the Board in a few months.

Discussion on Parks with Standing Water: Executive Director Sheppard explained that extreme rainfall has led to standing water in our parks and has been very challenging. Discussion ensued.

Update on Park Projects: Executive Director Sheppard then updated the committee on ongoing capital projects. The playgrounds are coming along really well. Grand openings are to be announced.

Director of Finance/HR Carol Mensinger and Administrative Assistant Jenny Runkel entered the meeting.

Recognition of Retiring Commissioner – Steve Gaines: Commissioners and staff commented on Commissioner Gaines' time as a Park Board Member and thanked him for his service. Chair Onderdonk read and Executive Director presented retiring

commissioner Steve Gaines with a plaque. Commissioner Gaines was offered an honorary plaque to be placed at a park of his choice.

Comments from Retiring Commissioner – Steve Gaines: Commissioner Gaines commented on his role at the District, personal experiences, praised staff members and commissioners, and thanked the community.

Matters from the Public: There were no matters from the public.

Other Business: The committee discussed ongoing projects.

Adjourn: Commissioner Lutton moved to adjourn the meeting at 9:13pm. Commissioner Boron seconded the motion, which passed by unanimous voice vote.

Respectfully submitted,

Lisa M. Sheppard
Secretary

Glencoe Bluff and Beach Stabilization

Presentation Glencoe Park District
July 10th, 2018

Altamanu  Inc.
landscape architecture + urban design + planning

Baird.  **BauerLatoza**
STUDIO

Tonight:

Brief reminder why study had to be done
and the Process

Preliminary Findings

Caleb Barth, P.E. Marine Engineer, Baird

Edward Torrez, AIA, LEED, AP BD+C
Principal, Bauer Latoza Studio



Altamanu Inc.
landscape architecture + urban design + planning

Baird. BauerLatoza
STUDIO

Carried out Master Plan of Lakefront Park

Blue Print for the Future

Make Park Accessible,

More Inviting entryways,

Accessible for all Glencoe Residents,

Diverse Activities

- play pods, nature based play
overlooks, mini-decks, picnic tables, etc.



Altamanu Inc.
landscape architecture + urban design + planning

Baird. BauerLatoza
STUDIO

Lakefront Park Master Plan: Barriers in the Park



“Uninviting entryways”

“forced to navigate an obstacle course just to get through”

Lakefront Park Master Plan : A Series of Entryways



Open up to the Community and Create a Series of Spaces

Lakefront Park Master Plan : North West Entryway Scheme 1



But How to Deal with Storm Water January 2017



Water Flows Across Paths in Park and Along Hazel Ave



Altamanu Inc.
landscape architecture + urban design + planning

Baird. BauerLatoza
STUDIO

Lakefront Park: Storm Water & Drainage



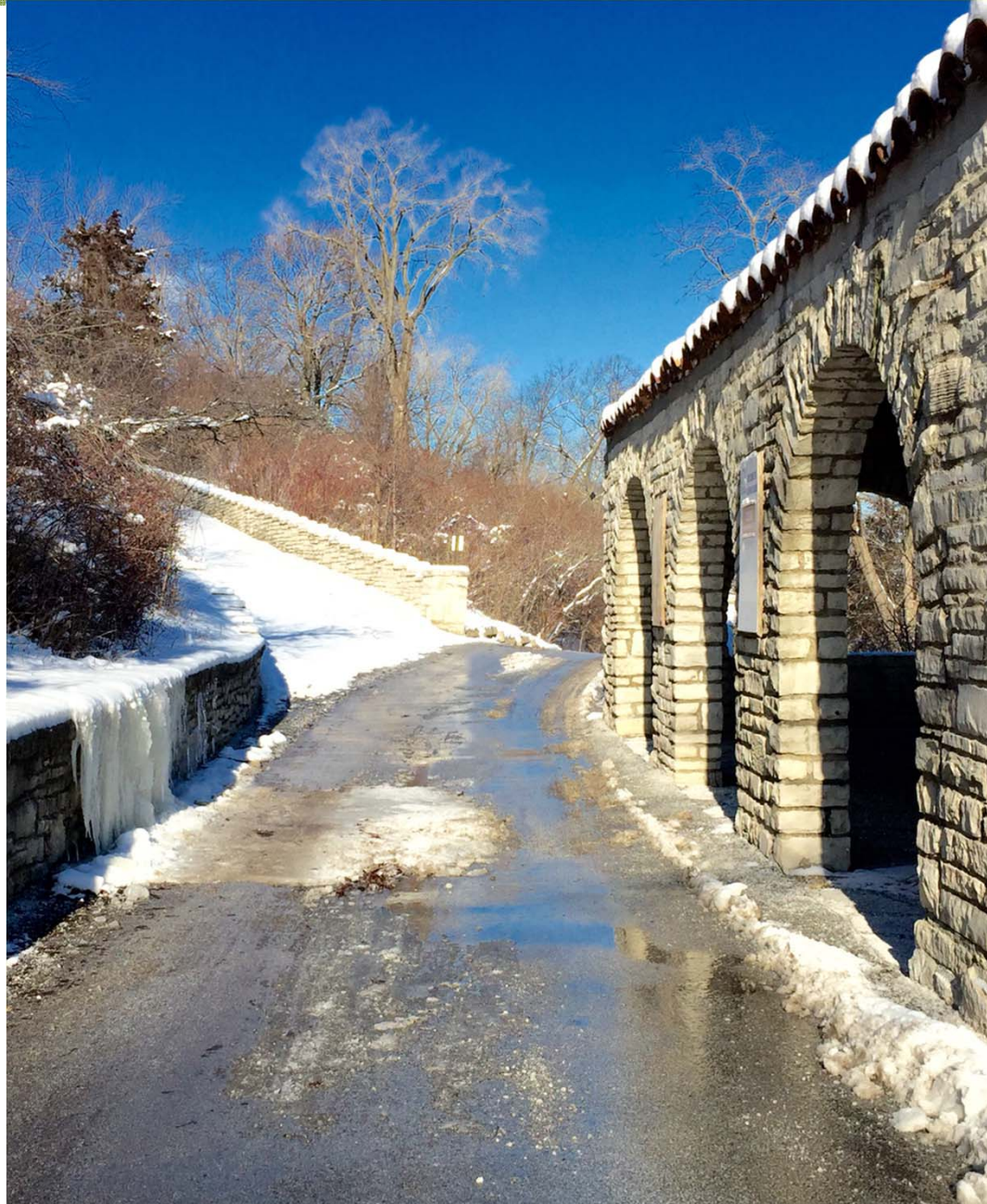
Stairs and Half Way House Inundated after rainfall



Altamanu Inc.
landscape architecture + urban design + planning

Baird. BauerLatoza
STUDIO

All Seasons: Storm Water & Drainage



Potential Movement of Bluff? July 7th 2017



Altamanu Inc.
landscape architecture + urban design + planning

Baird. BauerLatoza
STUDIO

Structural Failure July 7th 2017



Cribbing Failure – Bluff is pressing down on Beach House



Altamanu Inc.
landscape architecture + urban design + planning

Baird. BauerLatoza
STUDIO

Project Limits



Not In Scope



Project Team

Direction from Chris Leiner

“ Find the best, Glencoe deserves the best”



Altamanu  Inc.
landscape architecture + urban design + planning

Baird.  **BauerLatoza**
STUDIO



Altamanu and Baird working together on the future design of N. Lake Shore Drive and seven and half miles of Chicago's northern lakeshore



Oak Street Beach Looking North - EXISTING VIEW



Oak Street Beach Looking North - POTENTIAL VIEW -Option 1

”a global coastal engineering company that boasts offices in Canada, Chile, the United Arab Emirates, Barbados, and Australia.....Baird has now been in business for 25 years, but their work spans – and in a small but significant way, remakes – the globe”.

In Business Magazine

Baird Team

Lars Barber, P.L.A.

Principal in charge and will be reviewing deliverables.

Caleb Barth, P.E. Marine Engineer

Project Manager, data acquisition and structural reviews.

Richard Christensen, P.E., Ph.D.,

Technical lead for bluff stability

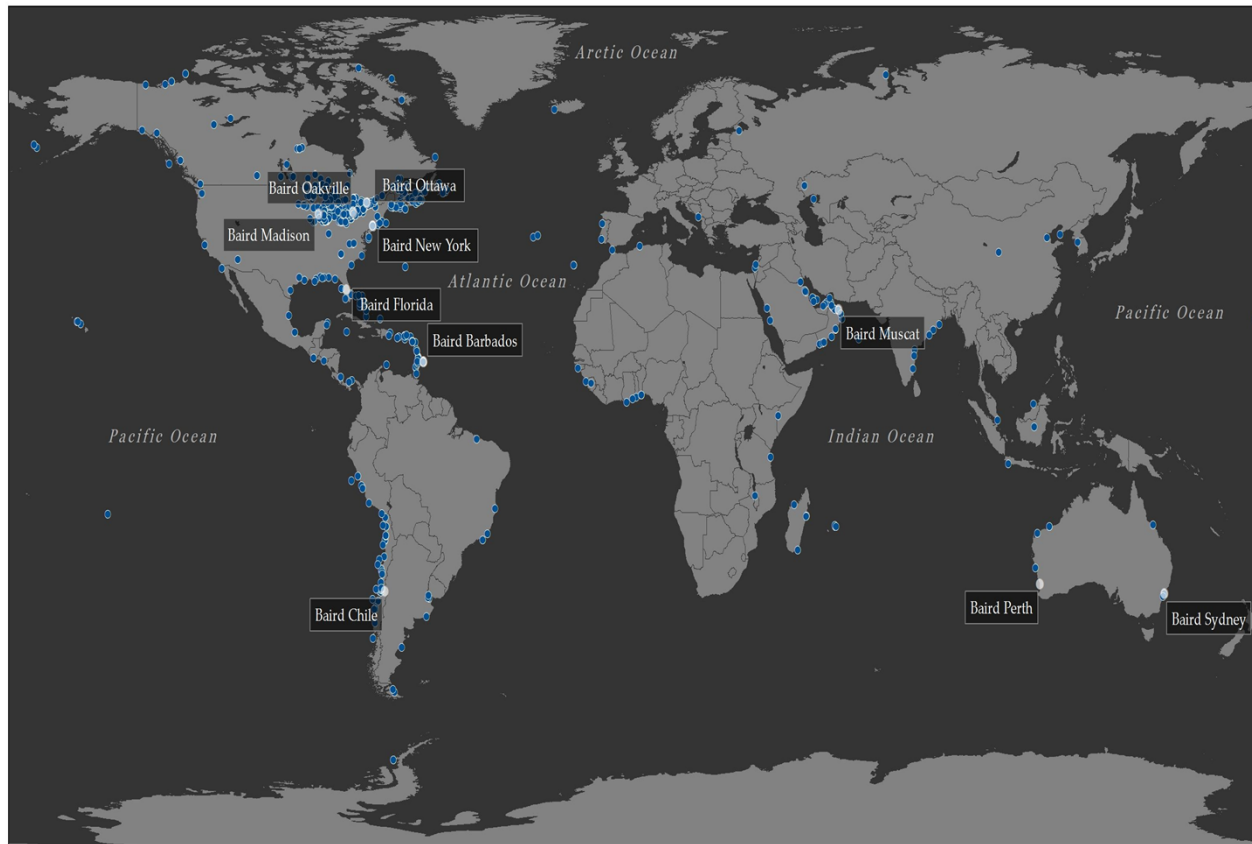
Mohammad Dibajnia, P.E., Ph.D.,

Technical lead for coastal processes

(nearshore hydrodynamics, sediment transport, erosion control and beach protection.)

Baird Overview

- Team of engineers, planners, scientists, and geomorphologists
- Specialists 100% dedicated to water related projects
- Thousands of marine projects and studies worldwide
- Approximately 74 employees



Beach and Bluff Erosion Projects



Port Vincent Development
Port Washington, WI,
Lake Michigan



Rosewood Beach, Highland Park, IL, Lake Michigan



Whitesand First Nation
Shoreline
Stabilization
Lake Nipigon, Ontario,
Canada



Forest Park Beach, Lake Forest, IL, Lake Michigan



Illinois Interim Shoreline
Study, Northern Illinois,
Lake Michigan

Process To Date

Preliminary Technical Analysis

Bluff Global Stability

Soil borings and visual assessment

Cross sections analyzed to estimate the existing factor of safety of the bluff.

Bluff/Structure Local Stability

Park District prefers a structural solution

Storm Water Management

Review the existing conditions of storm water system

Top of Bluff - Surface water in park

Down Bluff – Collecting and/or redirecting surface water

Outfall - Review the existing outfalls and proposal of new or updated outfalls if required

Coastal Review

Cursory coastal review of beach.

Use data library of similar projects in the region.



Work to be Carried-Out

Alternative Analysis

2 alternatives will be developed and costed.

Conceptual drawings, consisting of plans and sections.

Summary of benefits and challenges and

Recommendations for priority of implementation.

Preliminary Opinion of Construction Costs

A Preliminary Opinion of Construction Costs for each conceptual design alternative

Deliverable and Presentation to Staff

The results of the alternative analysis, conceptual drawings and opinion of probable costs will be submitted in a draft report.

The Team will present to PD staff and respond to the comments & incorporate revisions

Delivery of Final Report



Altamanu Inc.
landscape architecture + urban design + planning

Baird. BauerLatoza
STUDIO

Project Team

Bauer Latoza Studio



Altamanu  Inc.
landscape architecture + urban design + planning

Baird.  **BauerLatoza**
STUDIO

Project Team

Architecture - Planning - Historic Preservation

Sustainable Design

Local, national, and international

more than 30 design awards

Federal, State, and Local Government

MBE and DBE

Bauer Latoza Studio

- Founded in 1990
- Award-winning Preservation firm
- Architecture, Interiors, Planning, Restoration & Adaptive Reuse
- Masonry Repairs Experience
- Technically Skilled
- Strong Project Management
- Coordination with Stakeholders



Columbus Monument, Chicago, IL Museum of Science & Industry, Chicago, IL



Grant Monument, Chicago, IL



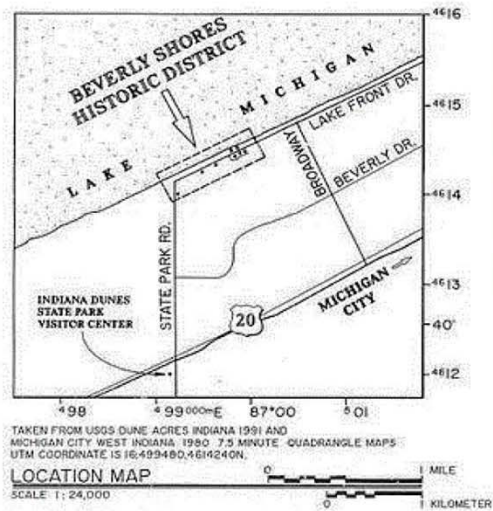
Humboldt Park Boathouse, Chicago, IL



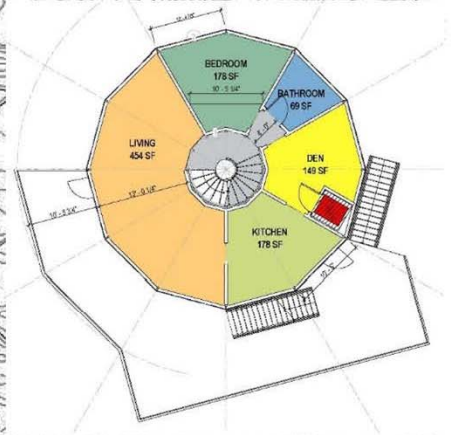
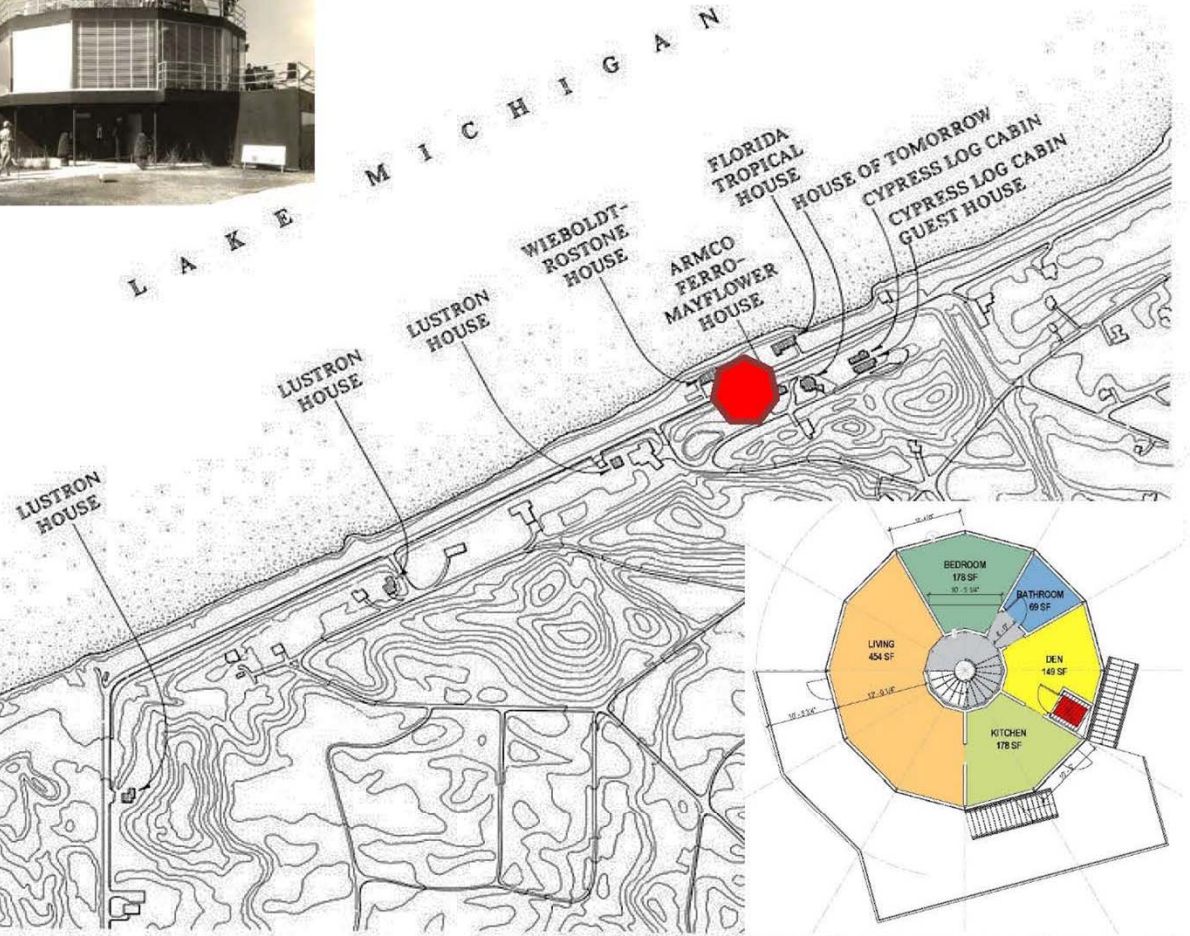
Bathing Beach House



Century of Progress District



BEVERLY SHORES - CENTURY OF PROGRESS ARCHITECTURAL DISTRICT



GLENCOE LAKEFRONT PROPERTIES

BauerLatoza
STUDIO

Bauer Latoza Studio



Edward Torrez, AIA, LEED AP BD+C

- 27 years experience in Architectural Historic Preservation. Serves as an Advisor to the National Trust of Historic Preservation and member of the Illinois Historic Sites Advisory Council.



Andrea Terry, RA, LEED AP

- related skills range from technical expertise with exterior envelopes, to research, interior renovation and preservation planning.



Kirk Sippel, AIA, LEED AP

- is responsible for the design and daily administration of BLS and has served as project architect on a number of award-winning projects

Project Team

Baird



Altamanu  Inc.
landscape architecture + urban design + planning

Baird.  **BauerLatoza**
STUDIO

Project Team

Bauer Latoza Studio



Altamanu  Inc.
landscape architecture + urban design + planning

Baird.  **BauerLatoza**
STUDIO

A photograph of a person walking up a wide, stone staircase in a park. The person is wearing a floral shirt and dark pants, and is carrying a bag. The staircase is made of large, light-colored stone blocks. The surrounding area is lush with green trees and foliage. The text "Thank You DISCUSSION" is overlaid in the center of the image.

Thank You
DISCUSSION

Baird.

Innovation Engineered.

October 3, 2017



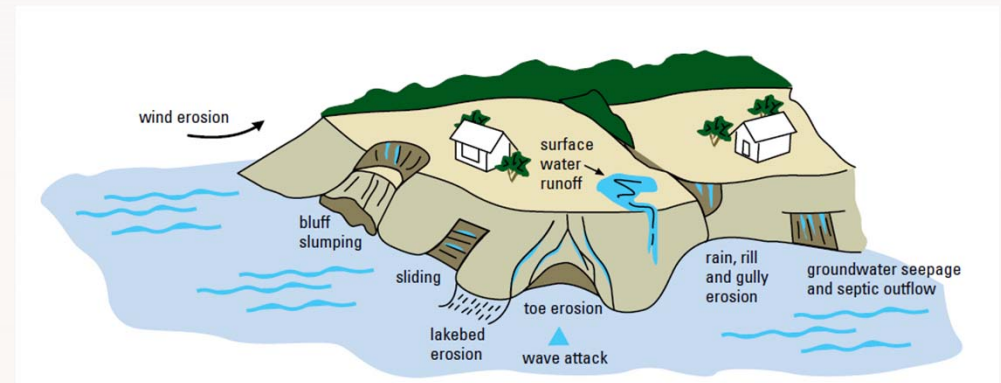
Glencoe Beach and Bluff Restoration

Condition Assessment and Recommendations Summary

July 10, 2018

Presentation Outline

- Surface-water Management
- Bluff Toe Stability / Coastal Review
- Bluff Slope Stability
- Bluff/Structure Local Stability – North Overlook
- Bluff/Structure Local Stability – Precast Concrete Crib Wall
- Bluff Stability Conclusions
- Recommendations



Causes and Effects of Coastal Erosion
(cite: UW Sea Grant Institute)

July 10, 2018

Surface-water Management – Lakefront Park / South Bluff



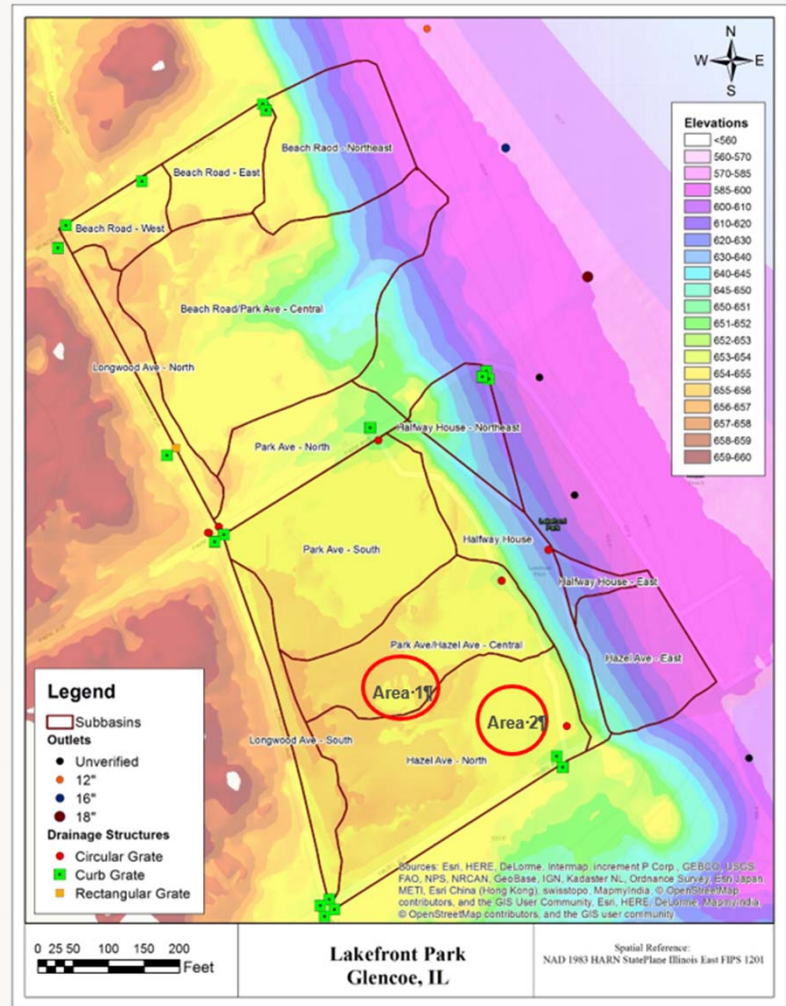
July 10, 2018

Surface-water Management – Center Bluff



Surface-water Management

- Lakefront Park/South Bluff
 - Capacity of outfalls appears adequate.
 - Grading/routing/collection needs improvements to limit erosion.
- Center Bluff
 - Surface-water collected in armored ravine.
 - Capacity of outfall is adequate.
 - Recommend modifying gate/fence to limit erosion.



July 10, 2018

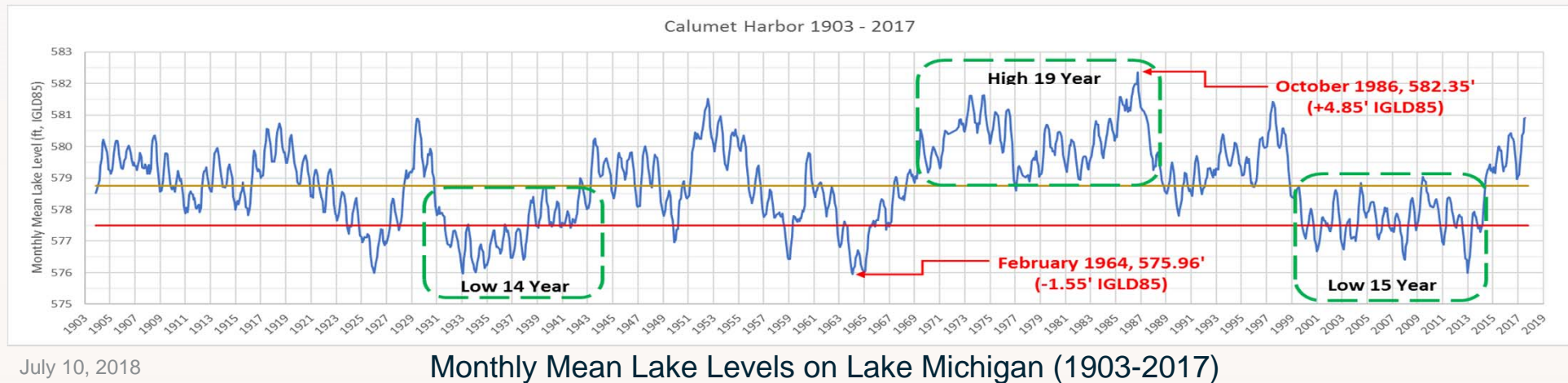


Bluff Toe Stability / Coastal Review

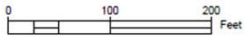
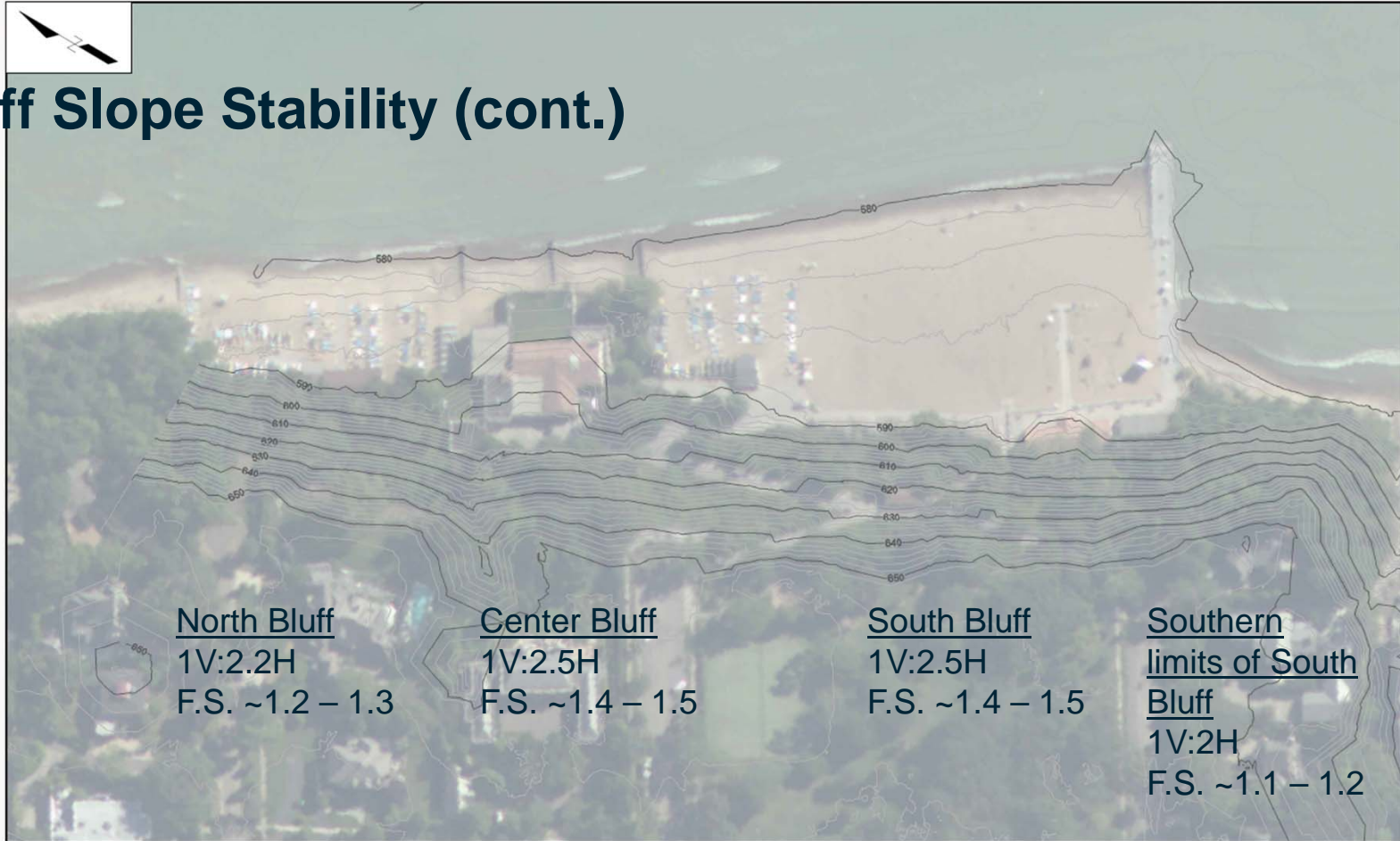
July 10, 2018

Bluff Toe Stability / Coastal Review (cont.)

- Responds to natural variations in lake levels, wave action, and sediment supply/transport.
- Will continue to require beach nourishment – requirements minimized if coastal structures are added.
- Outfall design causes additional erosion.



Bluff Slope Stability (cont.)



NOTES:
1. ALL ELEVATIONS REFERENCE NAVD 88 DATUM GEOID 12B

REV	T.A.	DESCRIPTION	DATE	BY	APP'D

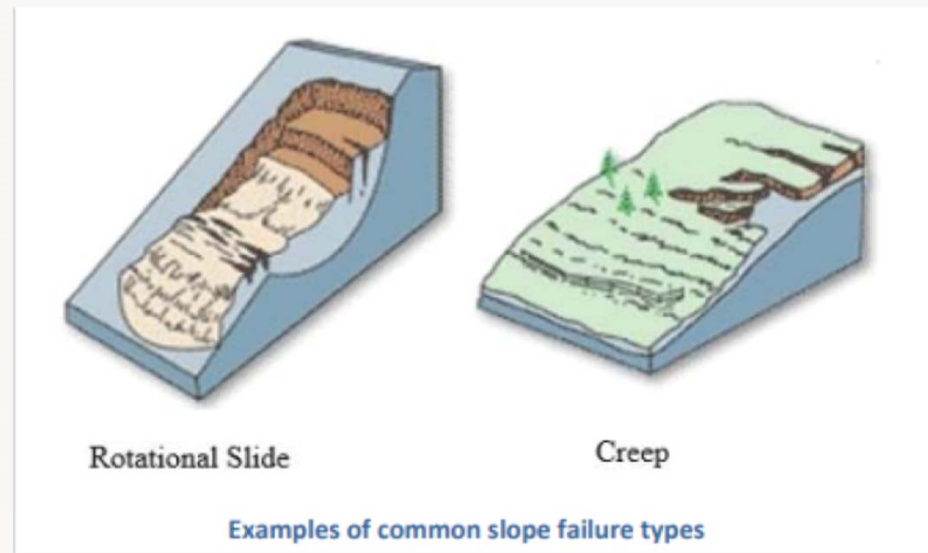
NO.	DESCRIPTION	DATE	BY	APP'D

PREPARED FOR:

PREPARED BY:
Baird
W.F. Baird & Associates Ltd.

PROJECT VICINITY - TOPOGRAPHY
DATE: 2018-07-06

Bluff Slope Stability (cont.)



Surficial Soil Creep Failure: Slow-moving, soil surface failures where slope material gradually moves downhill. Commonly caused by seasonal freeze-thaw or wet-dry cyclical loading.

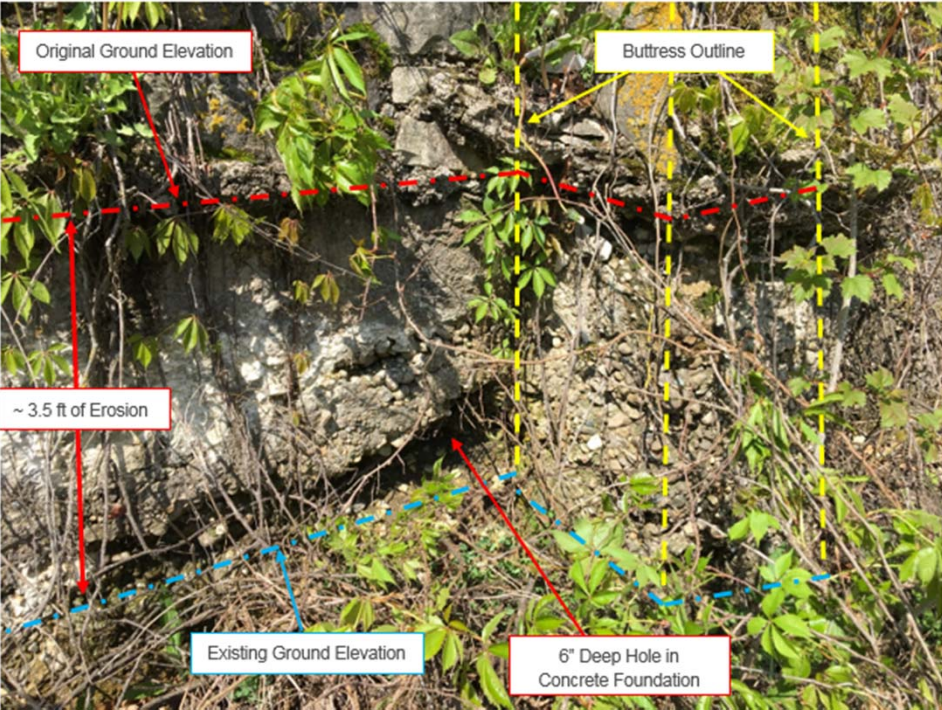
July 10, 2018

(Image Citation: MnDOT Slope Stabilization Guide.)

Bluff/Structure Local Stability – North Overlook



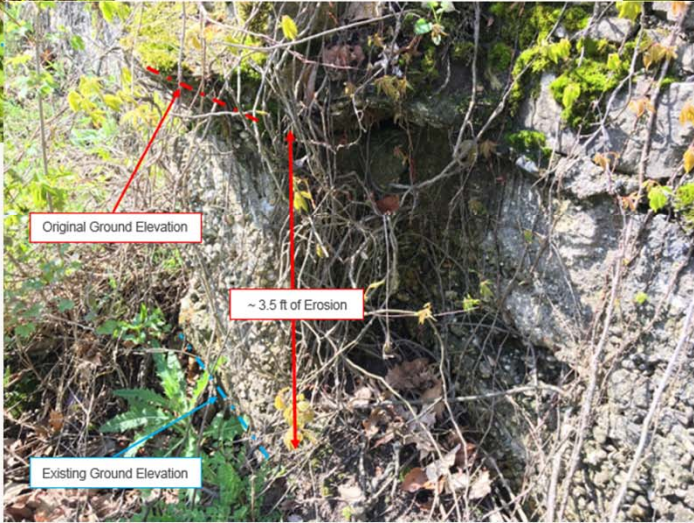
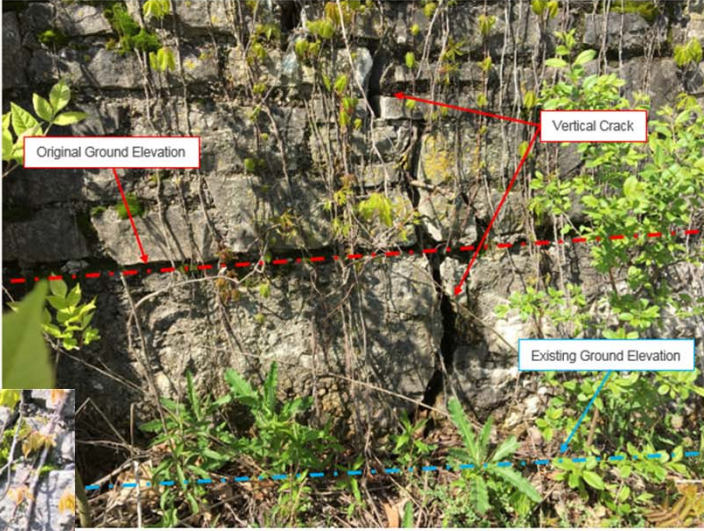
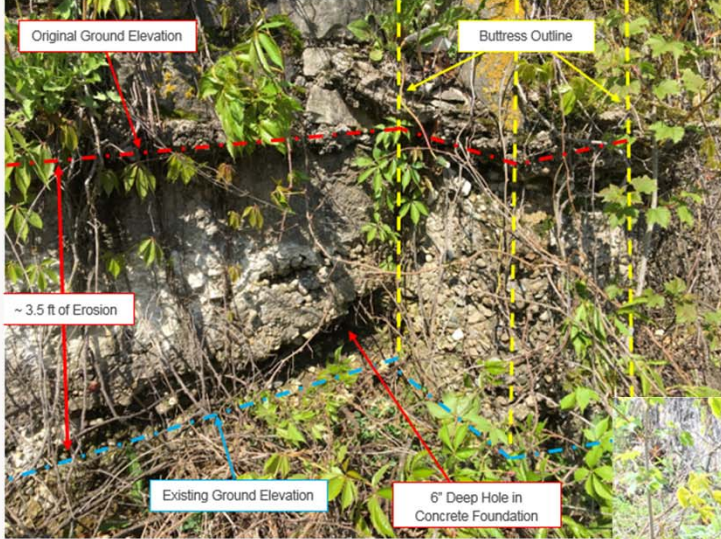
Historical Photo – 1998-99



Site Photo – May, 23, 2018

July 10, 2018

Bluff/Structure Local Stability – North Overlook (cont.)



Bluff/Structure Local Stability – Precast Crib Wall



Historical Photo – 1998-99

July 10, 2018



Bluff Stability Conclusions

- South Bluff & Center Bluff – factor of safety acceptable
- North Bluff & southern limits of South Bluff – factor of safety marginal
- Local stability issues likely associated with creep and surface-water drainage issues.
- Surficial creep visually observed – slow gradual process
- Southern section of South Bluff has lowest factor of safety.

Summary

Priority Level	Recommendations
High Priority	<ol style="list-style-type: none">1. Restore North Overlook2. Surface-water Management Modifications3. Replace Crib Wall
Medium Priority	<ol style="list-style-type: none">1. Restore/Replace Lower North Roadway STW and curb2. Restore Upper North Roadway STW3. Fill "The Cave"4. Restore Halfway House
Low Priority	<ol style="list-style-type: none">1. North Beach Outfall Modifications / Add Coastal Structures?2. Restore South Overlook3. Improve Beach House Drainage

- High Priority – Recommendations should be implemented in the next 1-2 years.
- Medium Priority – Recommendations should be implemented in the next 5 years.
- Low Priority – Recommendations should be implemented in the next 10 years.

Next Step: Develop Alternatives and Costs

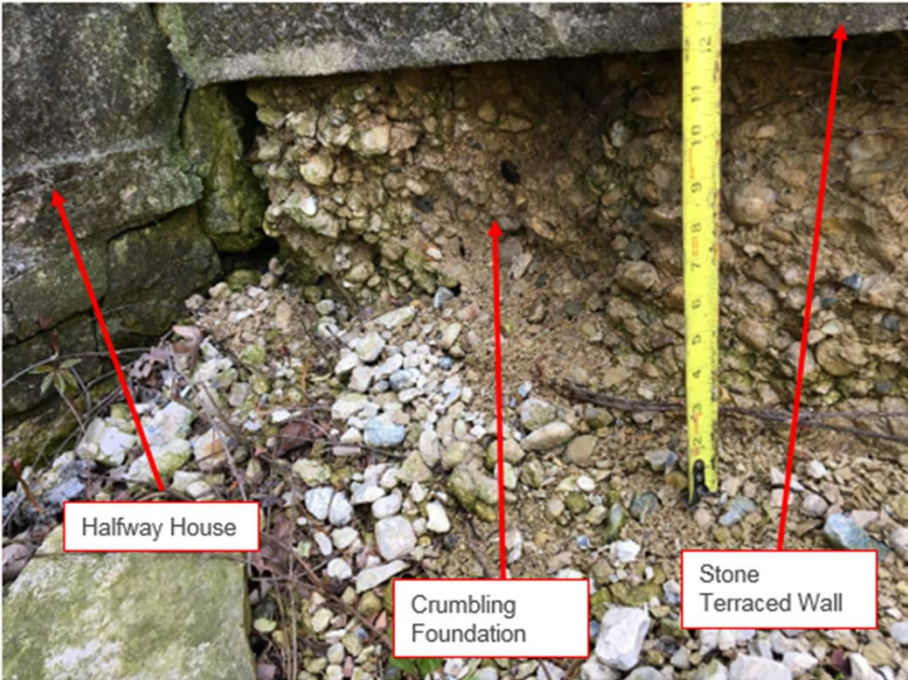
July 10, 2018

Baird.

Innovation Engineered.

October 3, 2017

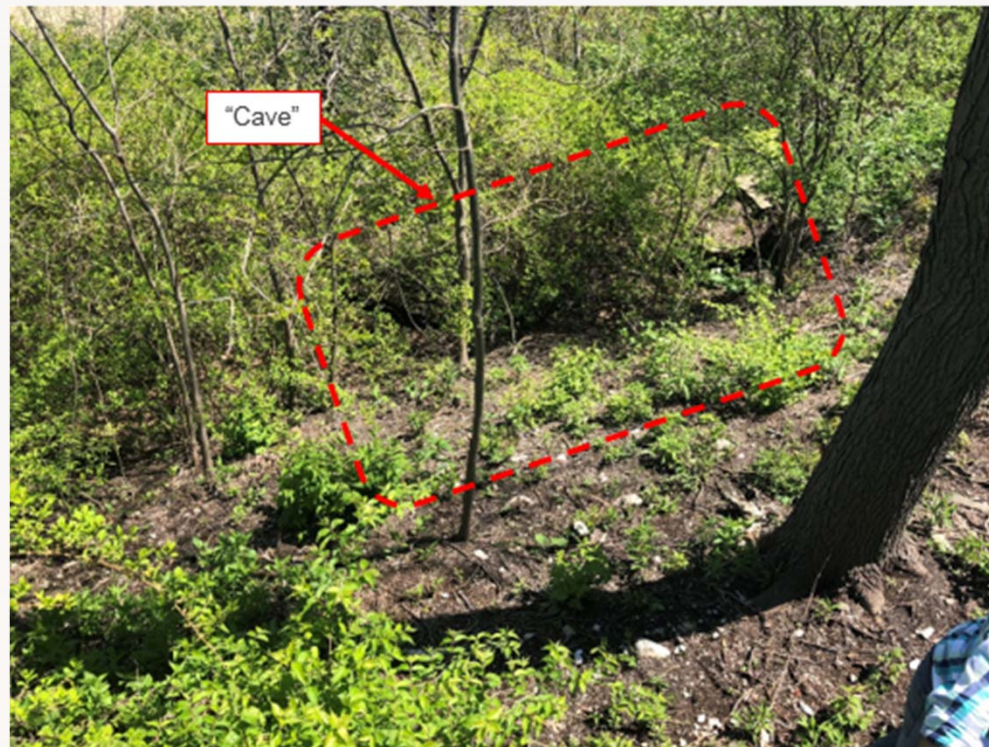
Bluff/Structure Local Stability – Lower North Roadway STW & Curb



Bluff/Structure Local Stability – Upper North Roadway STW



Bluff/Structure Local Stability – “Cave”



July 10, 2018

Bluff/Structure Local Stability – Halfway House



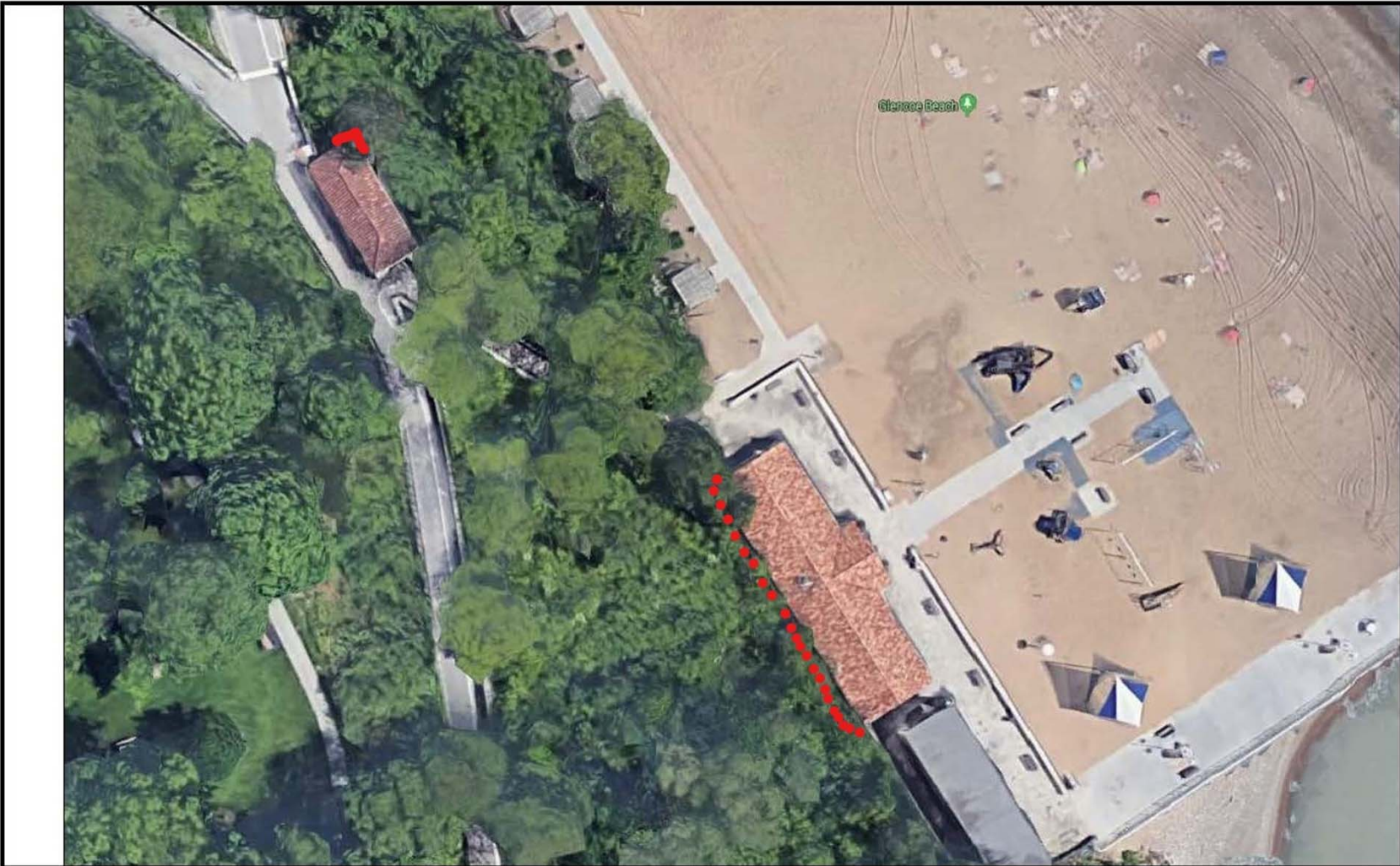
I Glencoe Beach Structures

Edward Torrez, AIA, LEED AP

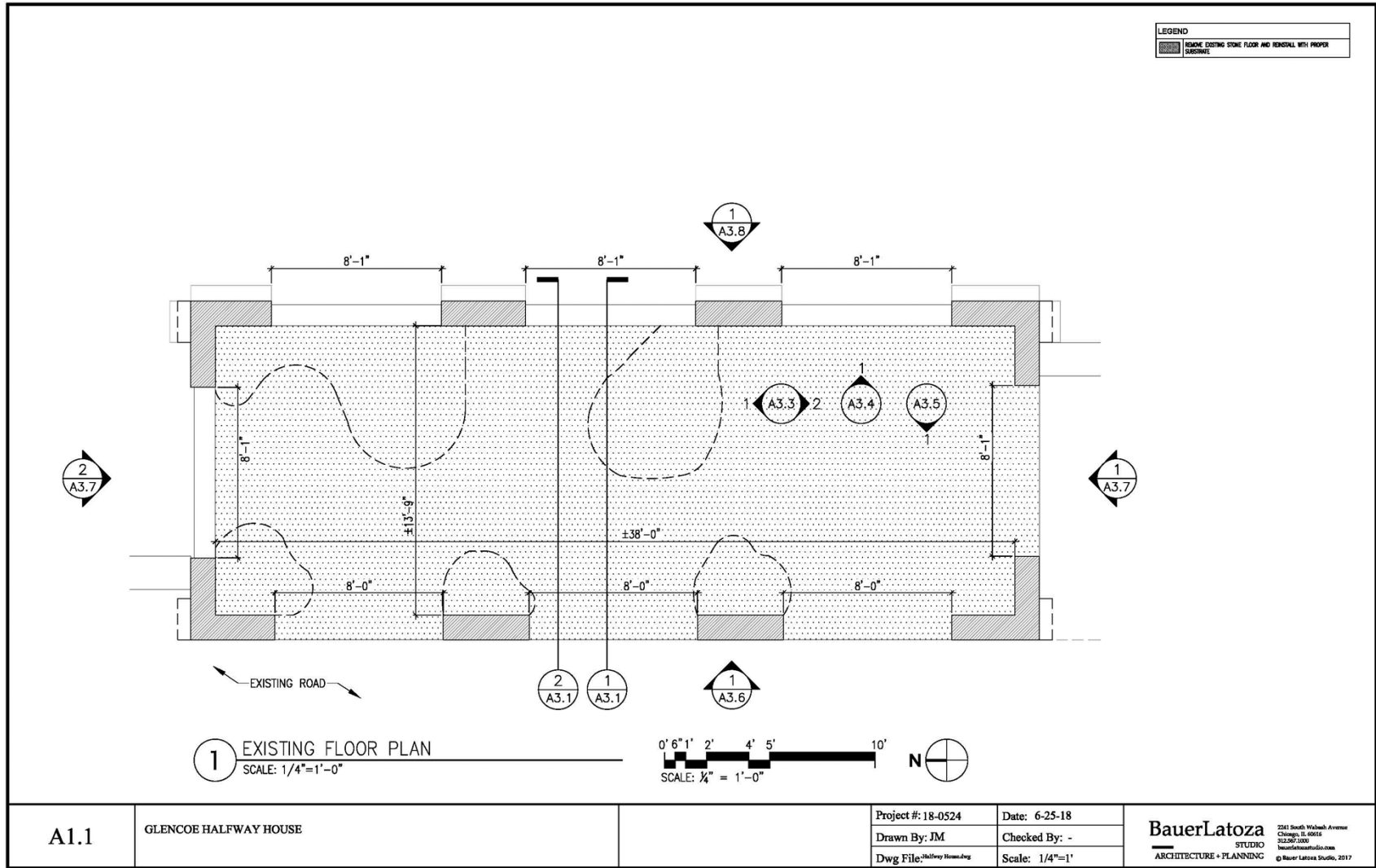
Bauer Latoza Studio

July 10, 2018

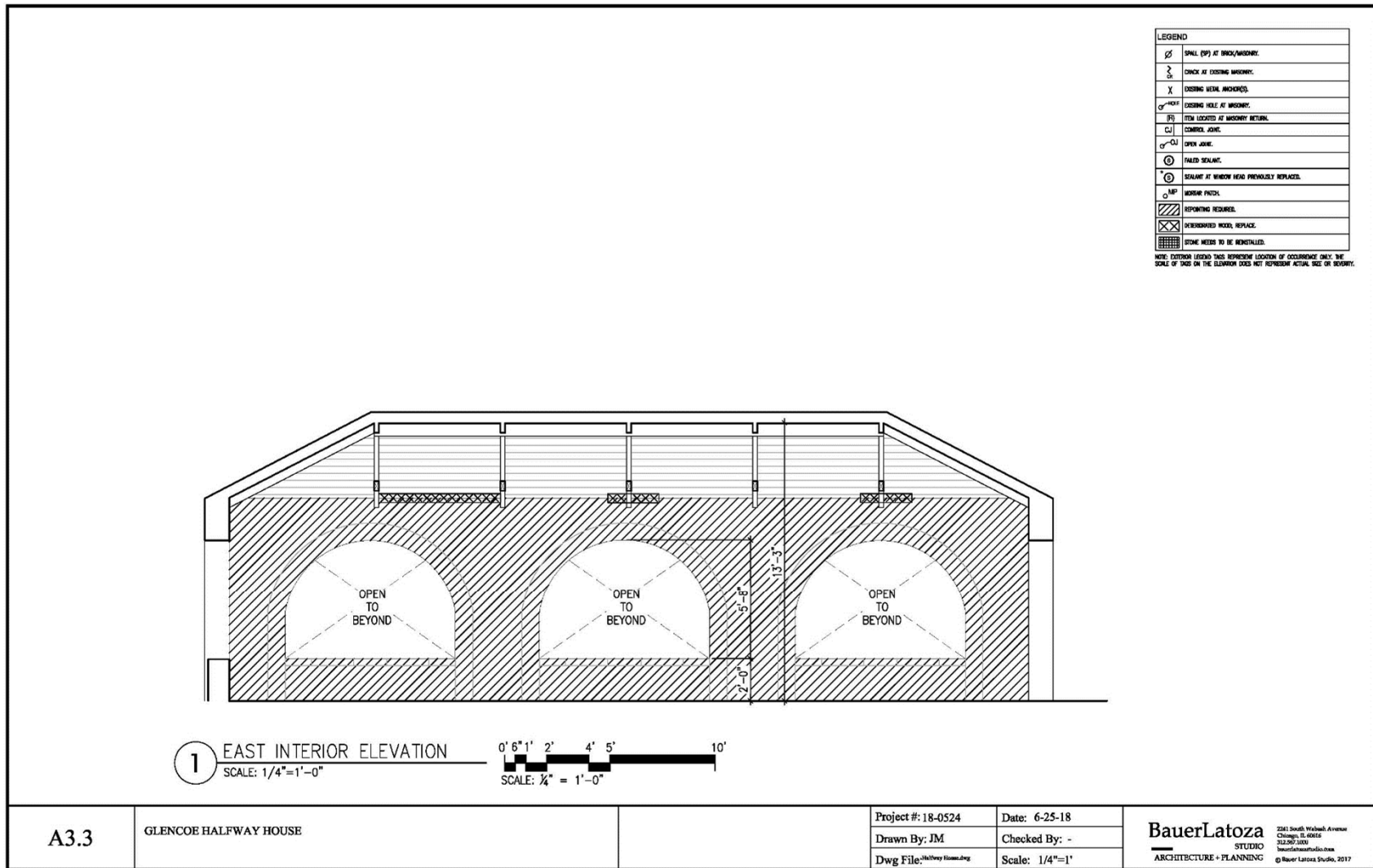




A1.0	GLENCOE LAKEFRONT MAP	Project #: 18-0524	Date: 6-25-18	BauerLatoza <small>STUDIO</small> ARCHITECTURE + PLANNING <small>250 North Wabash Avenue Chicago, IL 60610 312.321.1111 bau@latoza.com</small> <small>© BauerLatoza Studio, 2017</small>
		Drawn By: JM	Checked By: -	
		Dwg File: \\latoza\latoza\jms\18-0524.dwg	Scale: 1/4"=1'	









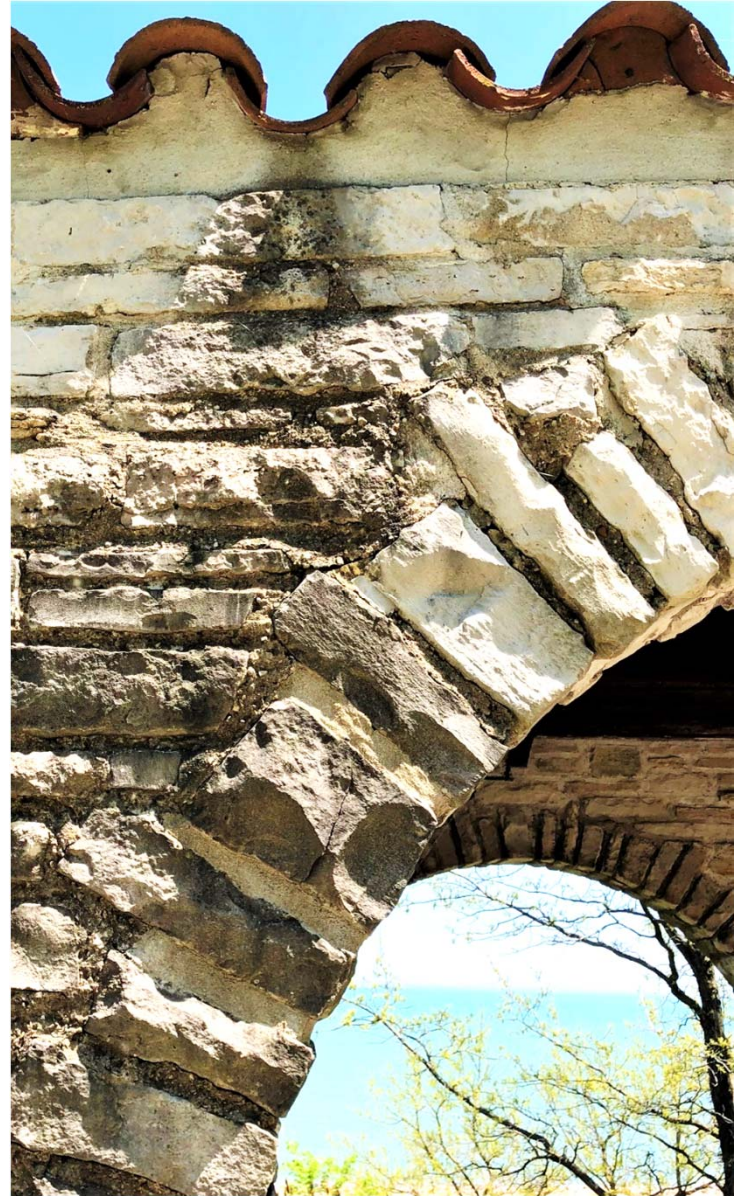




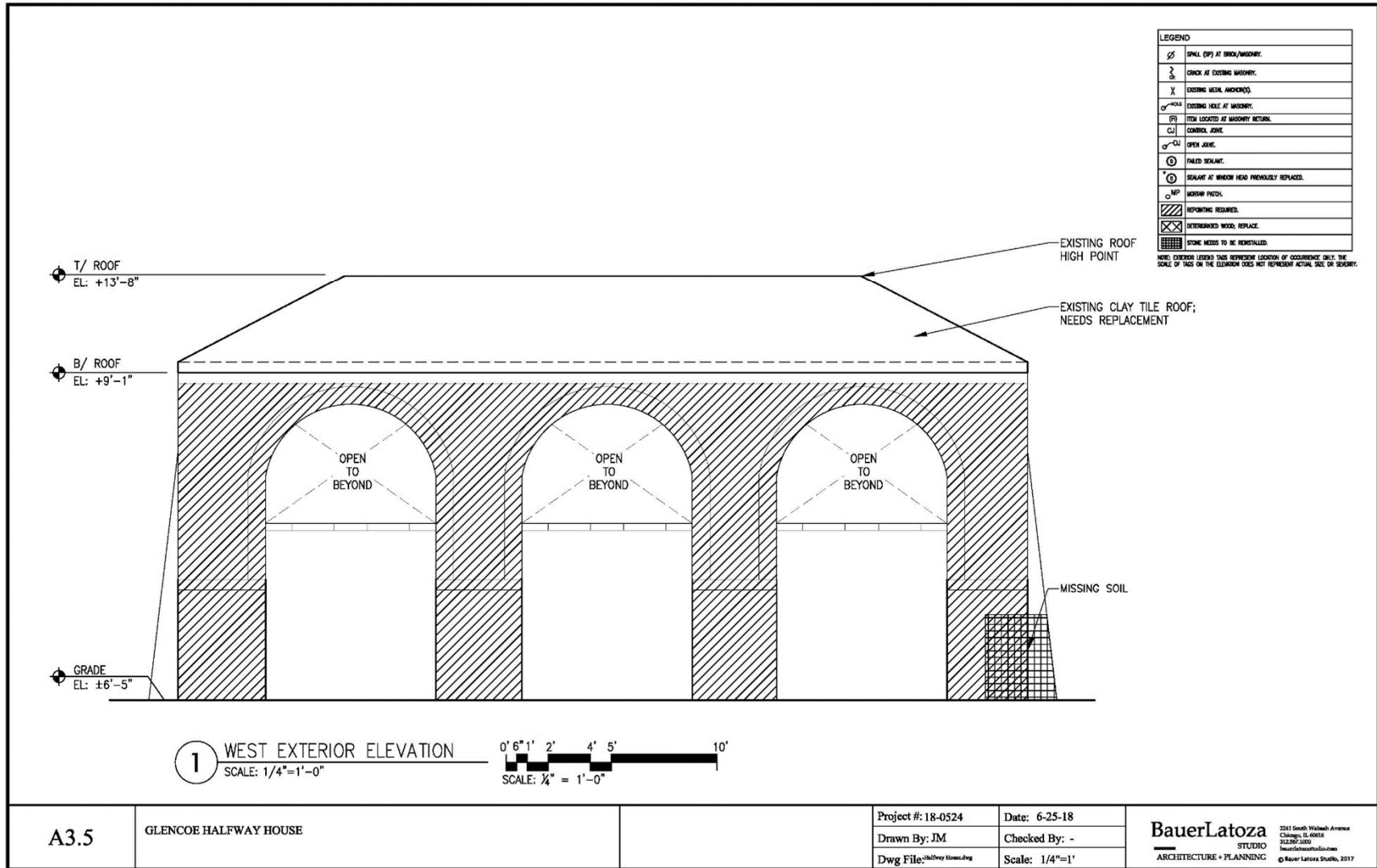


Glencoe Beach Structures

BauerLatoza
STUDIO

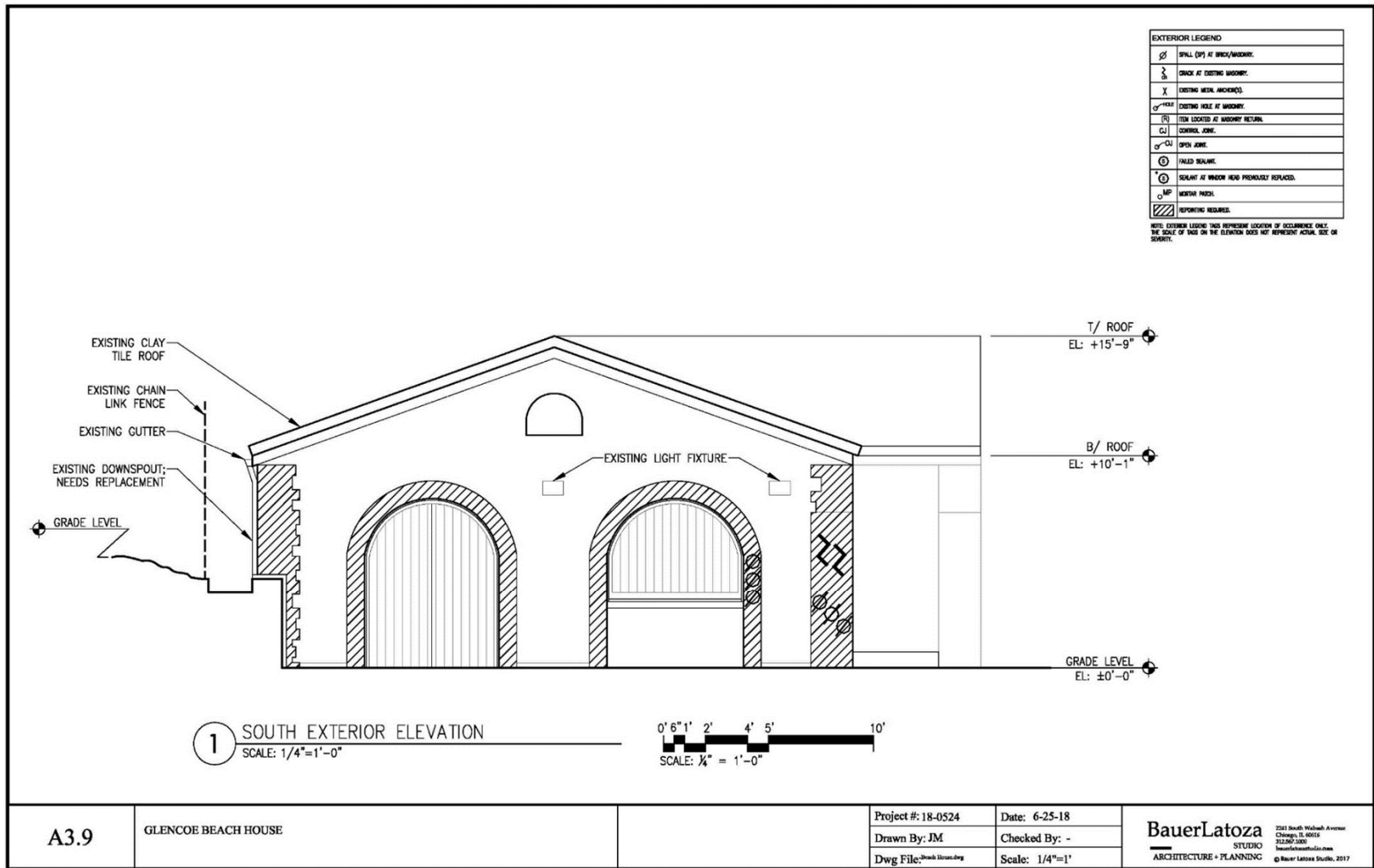




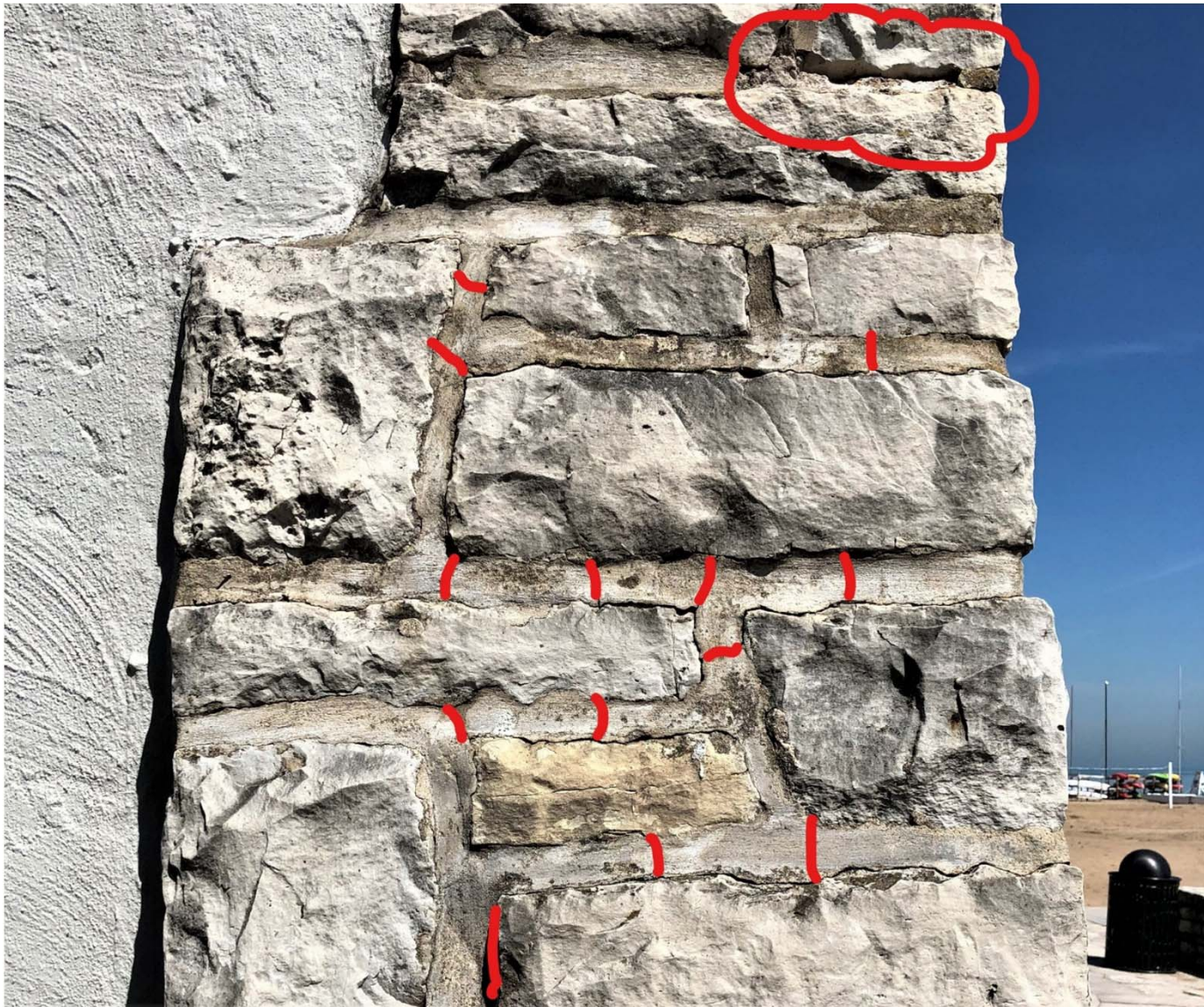


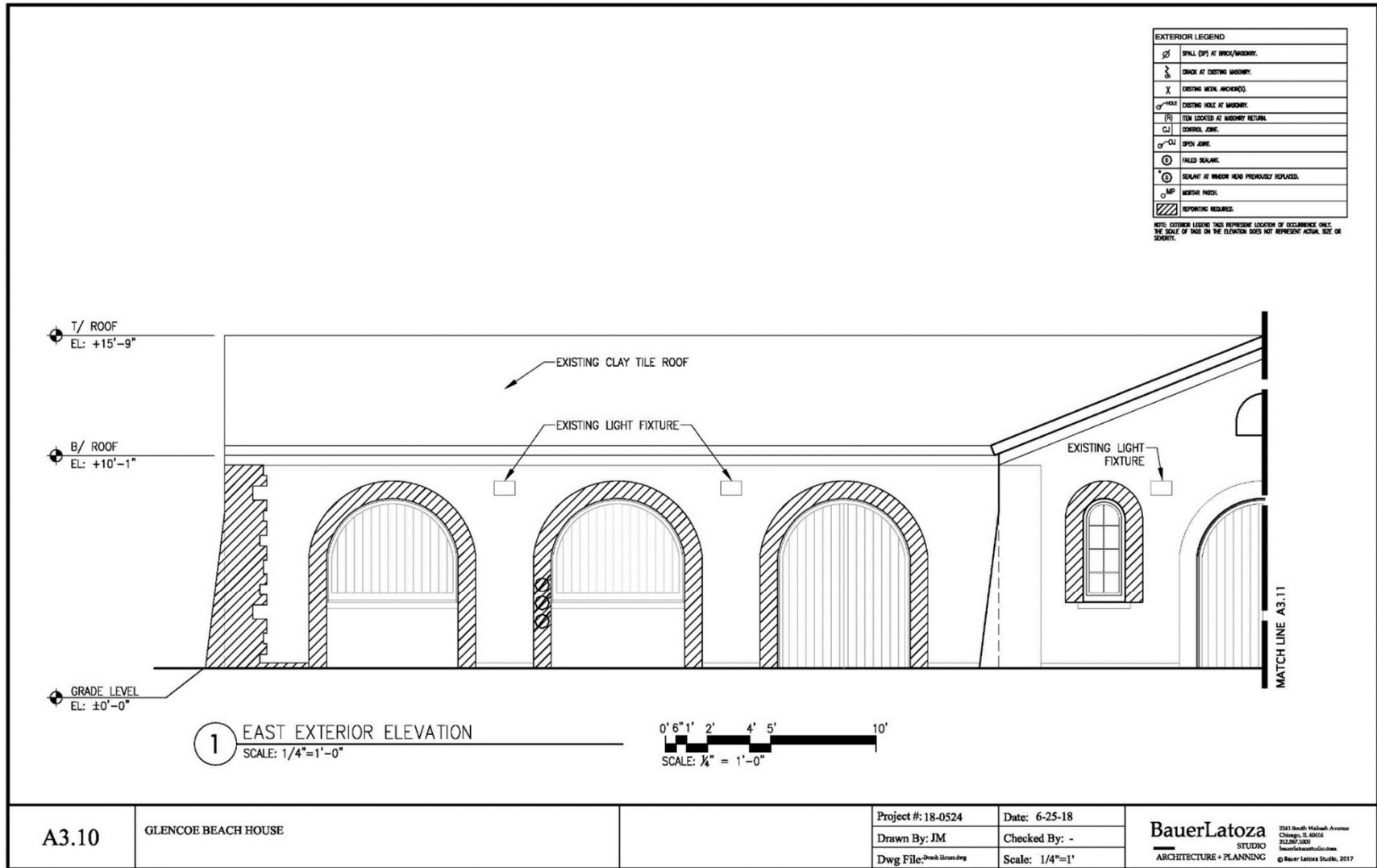












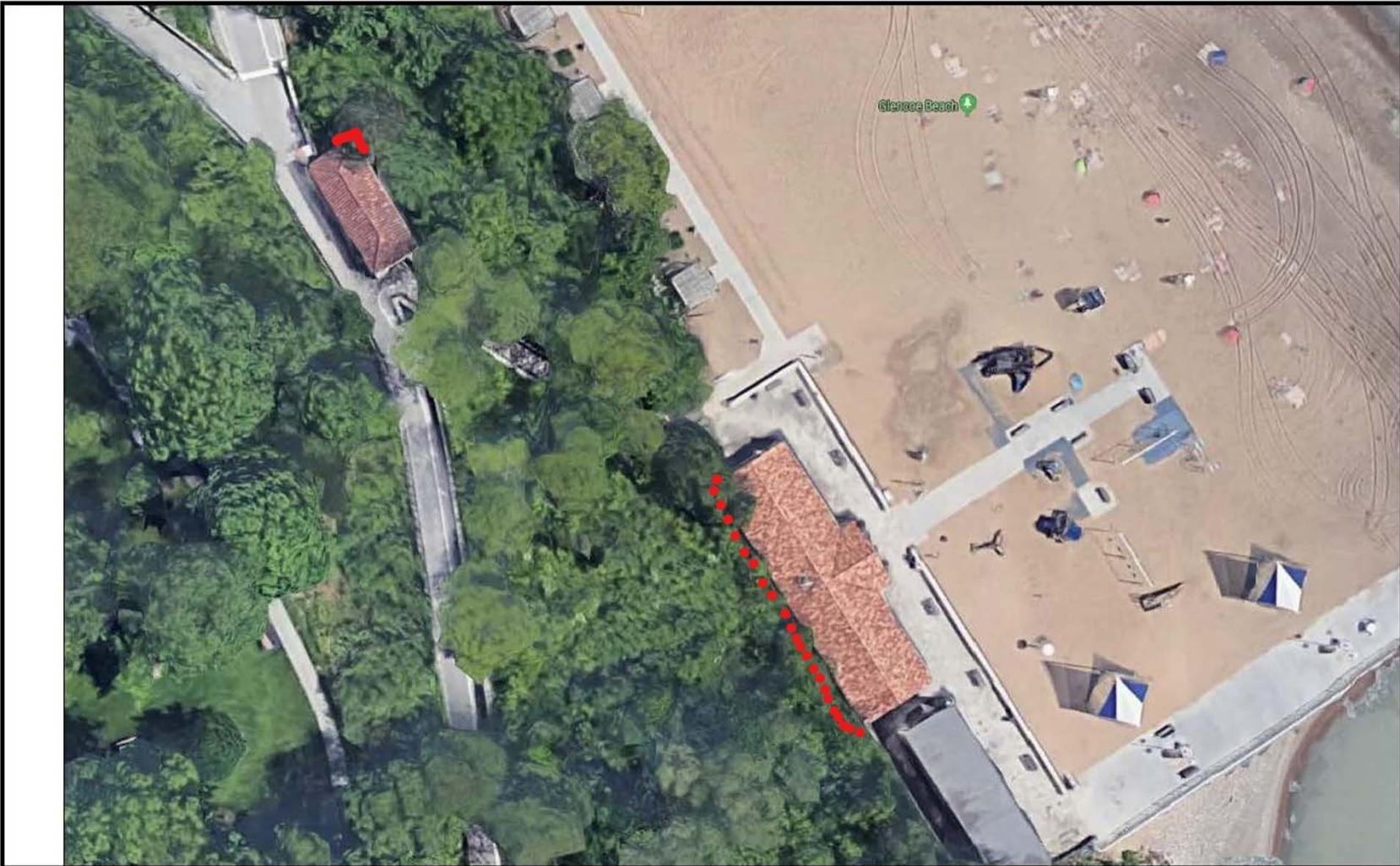




Glencoe Beach Structures

BauerLatoza
STUDIO





A1.0	GLENCOE LAKEFRONT MAP	Project #: 18-0524	Date: 6-25-18	BauerLatoza STUDIO ARCHITECTURE + PLANNING <small>250 North Wabash Avenue Chicago, IL 60610 312.321.1111 bau@latoza.com</small> <small>© BauerLatoza Studio, 2017</small>
		Drawn By: JM	Checked By: -	
		Dwg File: \\latoza\latoza\18-0524.dwg	Scale: 1/4"=1'	

Thank you!



www.bauerlatozastudio.com