

MINUTES OF SEPTEMBER 11, 2018 SPECIAL PROJECTS AND FACILITIES
COMMITTEE MEETING
GLENCOE PARK DISTRICT
999 GREEN BAY ROAD, GLENCOE, ILLINOIS 60022

The meeting was called to order at 7:04pm and roll was called.

Committee Members present:

Lisa Brooks, President
Stefanie Boron, Vice President
Josh Lutton, Commissioner

Staff present:

Lisa Sheppard, Executive Director/Secretary
Carol Mensinger, Director of Finance/HR
Chris Leiner, Director of Parks/Maintenance
Bobby Collins, Director of Recreation/Facilities
Erin Classen, Supt. of Marketing/Comm.

Committee Members absent:

Dudley Onderdonk, Chair/Treasurer

Members of the Public in attendance who signed in or spoke: Jim Carper, Penny Carper, Jay Chmiel, Larry Domont, Sally Domont, Dan Dorfman, Andrew Edelston, Adam Hal, Lucia Halvadia, Marla Hand, Bob Kimble, Phil Kiraly, Gary Lee, Todd Marver, Klaus Miller-Bergh, Vera Regina Miller-Bergh, Mary B. Motley, Mary G. Motley, Jim Nyeste, Scott Padiak, Bernard Rosauer, Jon Ruderman, Roman Schlaeger, Nina Schroeder, Steve Schroeder, Eric Sigurdson, Eileen Sirkin, Jack Smyth, Roberta Ury

Matters from the Public: There were no matters from the public.

Design Review of Old Green Bay Linear Parks: John McManus and Josephine Bellalta of Altamanu gave the presentation attached to these minutes. Changes from the first plan included changing the entranceways from cobblestone to pavers and taking out the walking loop at "sunken park". President Brooks welcomed community input.

Public Comment on Designs presented for Old Green Bay Linear Parks:

- Comment one: Can part of the path branch to the east so that we do not have to go to entrance to get on pathway, there is an underground river in a section of the park.
- Comment two: Can you make the camp tent where the pick-up location is a permanent building? Likes the splash pad
- Comment three: Less is more, way too ambitious, what is the cost of construction and ongoing maintenance
- Comment four: Grandchildren live in the area and likes the plan that it will be safer biking for children
- Comment five: Lives in the area, kids like to bike, does not think the park will drive in a large amount of people, we have many young families in the area, likes it and thinks it is a great idea
- Comment six: Lives on Greenleaf, likes the rose garden, how do you know they will use path instead of the road
- Comment seven: Hazel crossing – How are we going to deal with that crossing

- Comment eight: Lives on Maple Hill, intersection a concern, incorporate the underground river, go further to the east for the trail, instead of aerating the roots, parking questions.
- Comment nine: Lives on Maple Hill Road, does not want it to be a designation park Favors: Veterans Memorial, improvement in drainage, playground but not much larger, train, and rumble bike circuit. Not Favored: Introduction of more hardscape, paths, exercise equipment (clutter), taking away informal activity space.
- Comment ten: Like the plan, path would be great for kids, familiar with the train in another community and it caused frustration because it is locked up a lot, how do people access it, worried about Maple Hill intersection
- Comment eleven: Love activating the area idea, devote time to protecting the tree
- Comment twelve: Lives on Denis Lane, talked about bike and walking traffic
- Comment thirteen: Lives on Madison Street, uses route to take grandchild to school, less is more, likes Veterans Memorial Park, parks have a lot of kids, this will attract people to buy houses, less pathways so it doesn't threaten trees.
- Comment fourteen: Came in without a lot of knowledge on projects, should only do things that are must haves, park is a must have, path is redundant not a must have.
- Many comments questioned the construction and maintenance cost of this project

Josephine Bellalta presented the estimated project costs. Committee discussion ensued.

Capital Projects Discussion: Executive Director Sheppard informed the Board that they will need to make the decision if they want to move forward with the OSLAD grant they would need to pass a resolution at the September 17 Regular Board Meeting. The project cost for the OSLAD grant project components is approximately \$2.3 million. Veteran's Park, professional services, and unknowns would be an additional cost. Once the District makes a commitment to move forward with the OSLAD grant by passing the resolution at the September 17 Regular Board Meeting and if we are awarded the grant then we are committed to completing the project components. Usually the grant applied for would be for the full amount; however, if they reduce the grant funds, we would be allowed to reduce the scope of the project.

Committee discussion ensued. Bob Kimble indicated that he really liked the plan and saw it as an asset for the community. Commissioner Lutton stated that he wanted to be clear that the reason he ran for this seat was because he supported an agenda, which everyone on this Board already knows. But, he wanted to make sure if we do the trail that we do it right and thinks it's a mistake to put a gravel path through grass. He thinks that is just not aesthetically appealing. He said the master plan calls for more walking paths and native plantings. He questioned what plantings or landscaping would be around that path. Question number two is although he fully understands as well as anyone here that the sidewalk is not park district property, he would like to have a conversation about if we can work with the Village on one sidewalk or trail. Executive Director Sheppard indicated to the committee that the reason it is a winding path is that during the prior brainstorming meetings regarding this park development one of the directives was to have a winding path through the park so that it would not encourage use by fast bicycles, but more adults with children bicyclist and runners. Parks Director

Leiner indicated that the path has pockets of planting gardens that would be less costly to maintain. Commissioner Boron also liked the plan and was in favor of the pathway the way it was depicted, leaving the sidewalks. This gives delineation between walkers, bikers, etc. She liked the hand-cranked train and thinks there is opportunity for a donor. She questioned if we need that many fitness stations. President Brooks was also in favor of the plan and is reflective of what was discussed in prior committee meetings. She indicated that she was surprised of Josh's remarks, what would make him go from wanting a path to not wanting one.

Discussion ensued regarding the pathways, Board's past direction for the designs, material selection for the grant, and placement of path affecting recreational use of current open areas were discussed.

Executive Director Sheppard stated that if the Board decides to go for the grant, all the capital projects in the next two years, with the exception of this playground and the pathway, would be deferred for three more years. The linear project system would be the only project in the next couple of years. In addition, we have received more calls than normal this year, requesting lights at Watts tennis courts, improve drainage in low lying parks, and improvements of baseball fields. This is an important project, but know that if the project moves forward, all other improvements talked about in the last couple years that are infrastructure needs would have to be put off for 2-3 years.

Director Mensinger continued that the OSLAD grant monies must be paid by the District and then OSLAD refunds after the project is complete. Funding options were reviewed. The items on the 3-Year Capital Projects plan were reviewed and which projects would be deferred if the grant project is approved. The Board needs to ask themselves if a \$400,000 OSLAD grant is worth suspending two years of our capital plan or would doing the project in phases would better suit the community.

Committee discussion ensued; each committee member gave their project viewpoint.

Chair Brooks, based on the discussion by the committee, directed park district staff to move forward with the OSLAD resolution as an action item at the Monday, September 17 Regular Board Meeting.

Other Business: There was no other business.

Adjourn: Commissioner Boron moved to adjourn the meeting at 9:31pm. Commissioner Lutton seconded the motion, which passed by unanimous voice vote.

Respectfully submitted,

Lisa M. Sheppard
Secretary



Old Green Bay Road Linear Parks Master Plan

September 11th, 2018



Delighted to be Here!!!

Tonight

Proposal for a Recreational Multi-Use Trail through the Parks along Old Green Bay Road

Accommodate Variety of Users, All Ages & Abilities

Act as a Spine for Aesthetic and Park Experiences

Promote Exercise and the Health of the Community

But First the Opening of Jefferson Vernon Playground



Before



Opening Day August 29th 2018





Shows the Need for Recreation
and
Community Gathering Spaces



People who Helped Make it Happen : Board and Staff



People who Helped Make it Happen : Board and Staff



Altamanu  Inc.
landscape + architecture + urban design + planning


SMP GROUP
SMP GROUP, INC.


GLENCOE
PARK DISTRICT



People who Helped Make it Happen : Board and Staff



Please
Remember this Image of Children Enjoying Exercising!!



Altamanu's privileged to have worked on many Playground, Park and Trail Projects:
North Branch Bridge & Trail, Lake Cook Trail, Lake Forest, Chicago River and Lakefront Trails



Tonight: The Green Bay Trail in Downtown Glencoe



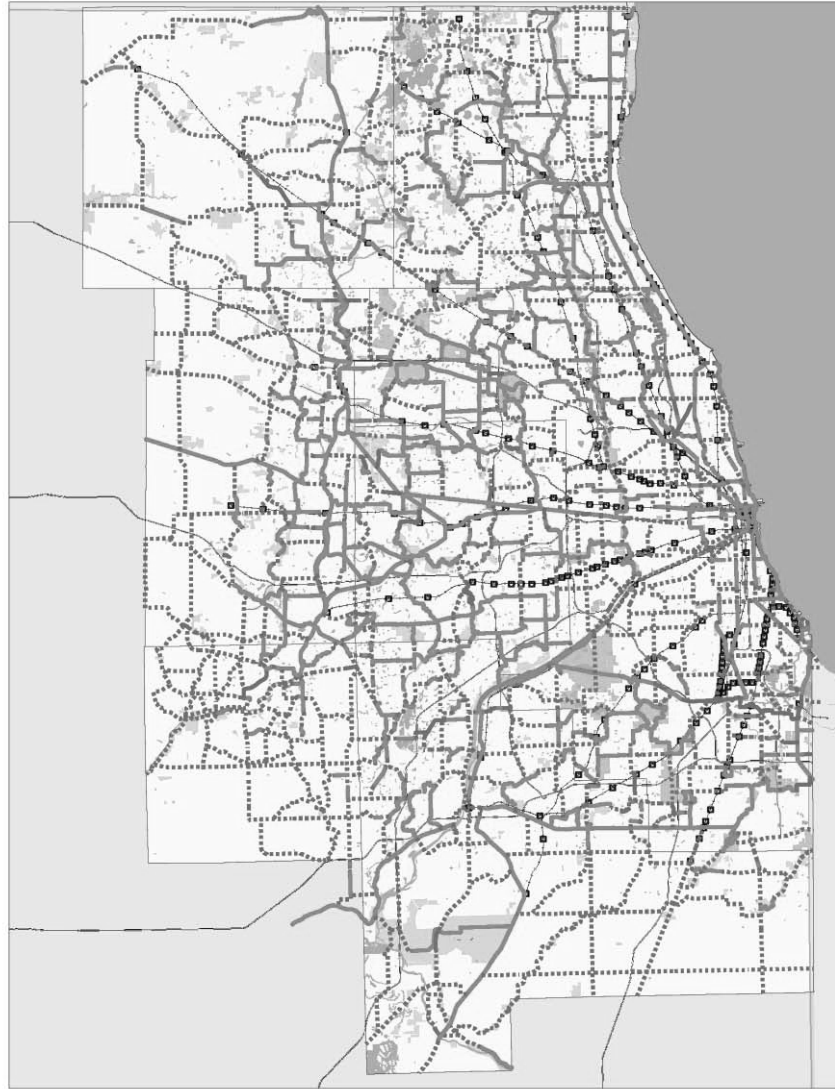
Part of Ever-Growing Network

Altamanu  Inc.
landscape architecture + urban design + planning


SMP GROUP
SMP GROUP, LLC


GLENCOE
PARK DISTRICT

2016 Regional Greenways and Trails Plan



CMAP 2016 Proposed Greenways and Trails Plan

Trail Status

- Existing Trails
- Planned and Future Trails
- Programmed Trails

- Metra Lines
- Metra Stations
- Parks and Open Space
- Water Bodies



Part of Ever-Growing Network

Altamanu Inc. 
 landscape architecture + urban design + planning



Cycling: Rising Trend Nationally

Large Increase of Cyclists between 2012 and 2016

By 2016 : 66.5 million cyclists

Young adults –18 to 24 – Increasing Dramatically

However

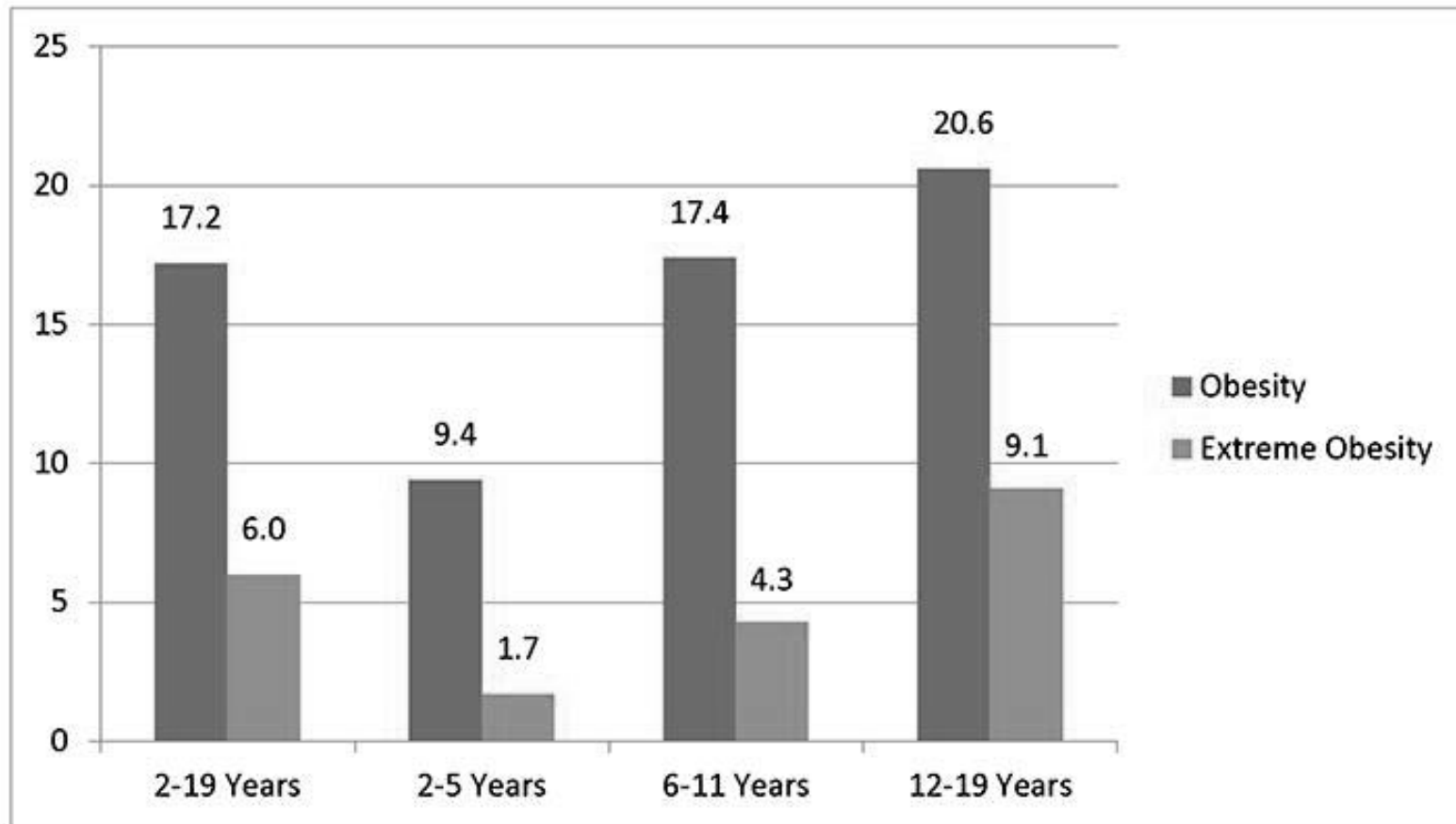
Young cyclists in the U.S. Declining

Statista

Correlation to Rising Health Issues 2013 - 2014

Children and Adolescents (Youth)

Estimated Percentage of US Youth with Obesity*, Ages 2–19, 2013–2014 NHANES Data



* obesity includes extreme obesity

Meanwhile Active Adults : Fastest Growing Segment Nationwide



“Thoughtful Neighborhood and Park Design
Encourages Active Aging.” *US NATIONAL LIBRARY OF MEDICAL RESEARCH*

“Paths & Trails Most Popular Facilities in Surveys”

NATIONAL PARK AND RECREATION ASSOCIATION

Altamanu  Inc.
landscape architecture + urban design + planning


SMP GROUP
INCORPORATED


GLENCOE
PARK DISTRICT

Need ADA Compliant Paths



“Shouldn’t there be some access so we can experience the trees?”

Resident of Glencoe

And Not Surprisingly Another National Trend

Call for Intergenerational Recreation!!!!

FRIENDSHIP SWING



OUTDOOR CARDIO WALKER



SPINNER



“Children can see older adults in non-stereotypic activity and begin to understand that exercise is a lifelong pursuit”

Correlation to Rising Health Issues

Therefore

Children & Adolescents Drastic increase in Obesity/Diabetes
Epidemic according to AMA

Decrease in Exercise in that Age Group

Seniors (Active Adults) Fastest Growing Segment (not a pun)

Paths and Trails most Popular and

Call for Intergenerational Recreation

What Does this Mean for the Park District

Children & Adolescents Drastic increase in Obesity/Diabetes
GET THEM EXERCISING

Decrease in Exercise in that Age Group
PAY ATTENTION TO THE YOUNG

Seniors (Active Adults) Fastest Growing Segment
AND PROVIDE ACTIVITIES FOR ACTIVE ADULTS

Paths and Trails most Popular and Intergenerational Rec.
PROVIDE PEOPLE ARE LOOKING FOR PATHS AND TRAILS

Back to The Green Bay Trail : From On Trail Link

Green Bay Trail Facts

Trail end points:

St. Johns Ave. at Sheridan Rd. (Highland Park) and Greenleaf Ave. (Wilmette)

Trail surfaces: Asphalt, Concrete, Crushed Stone

Trail category: Rail-Trail

Trail activities:

Biking, Skating, Walking, Jogging, Cross-Country Skiing, Wheelchair Accessible

ACCESSIBLE?

Not Particularly in Glencoe!!!



Part of the Trail is through Parks, on Separate Paths
However long Segments are on Busy Roadways

And Next Year is the Sesquicentennial

“Glencoe officials are seeking suggestions from residents on what they would like to see in terms of a “legacy gift” as part of the next year’s planned celebration of the village’s 150th anniversary of its incorporation.

The goal is to have some long-lasting gift that will remain in place long after the village’s sesquicentennial festivities subside.

The Park Districts' Reaction to All that Information

The Board of Park Commissioners of the Park District
conducted visioning secessions

Engaged Altamanu to examine the
Potential of a Multi-Use Trail along the
Old Green Bay Road Linear Parks

Proposed Project : .53 Miles Approx. 2,800 Feet



More Than Seven and a Half Football Fields



What's Involved?

5 Separate Parks, each with its own distinct character, viewsheds, settings, and spatial relationships.

A playground that needs to be replaced, Veterans Memorial, various gardens, historic artifacts and an urban forest with many mature (priceless) trees.

Issues within each park vary. Some Streets have no Pathways and there are No Park Pathways.

Drainage, current-use, potential-use, and relationship to residences are also important.

What's are We Trying to Do?

Provide a Safe Environment for All, including Children, and Active Adults, to Exercise Together and Experience Our Parks.

Not Just a “Borrowed Landscape” to View as you Drive-By along the Road, but “being in the Parks under the Trees”.
(ADA access into the Parks not just along the Street)

Rehabilitate the Park Facilities that We Have (Playground at Lincoln and Crescent constructed 26 years ago)

Add New Facilities of Interest to All but in particular the Young and Seniors



Existing Conditions Analysis

Altamanu  Inc.
landscape architecture + urban design + planning


SMP GROUP
SMP GROUP


GLENCOE
PARK DISTRICT

Major Arterial Nodes



Northern Gateway
Maple Hill

Downtown Gateway
Park Avenue

Existing Conditions Analysis

Only Crossings at Maple Hill and Park Avenue



Northern Gateway

Downtown Gateway

Existing Conditions Analysis

Altamanu Inc.
landscape architecture + urban design + planning

SMP GROUP

GLENCOE
PARK DISTRICT

Connections to Sheridan Road



Traffic Speeds Along Maple Hill

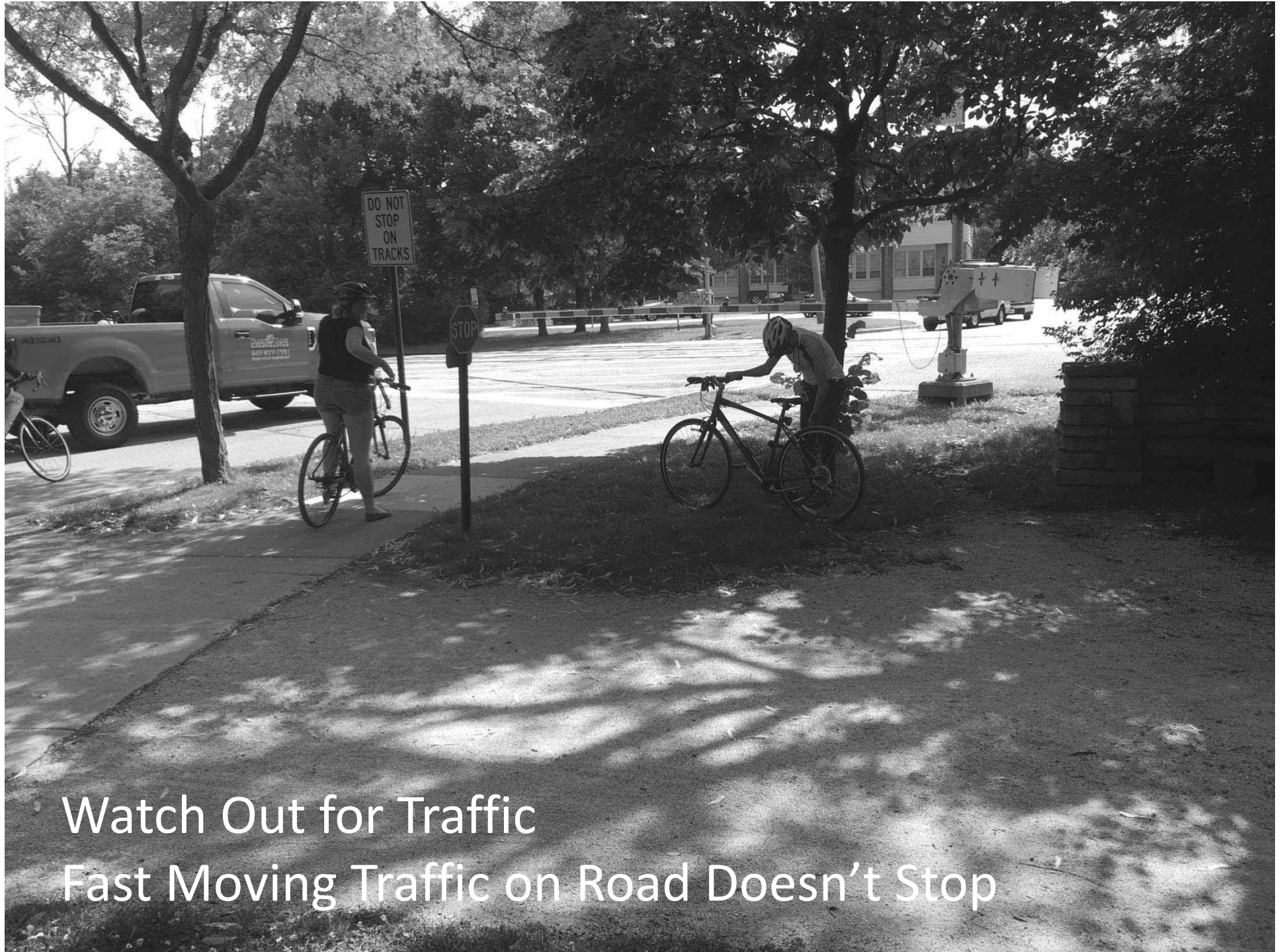
Northern Gateway At Maple Hill : Issues Safety & Confusion



Which Way Do We Go?



Views Blocked by Utilities, Trees & Curve of Alignment



Watch Out for Traffic
Fast Moving Traffic on Road Doesn't Stop



Cycle along the sidewalk



But many go straight across a busy intersection



We are trying to encourage people to go safely into
Park for the length of the Project

Not Talking About M.A.M.I.L.s (Middle Aged Men in Lycra)



They will continue to use the fastest Route

We are Thinking of Families, Seniors and Children



Many of Whom Use the Roadway

Altamanu  Inc.
landscape architecture + urban design + planning


SMP GROUP
smpgroup.com


GLENCOE
PARK DISTRICT
www.glencoeparkdistrict.org

Thinking of Something More Like This Image



And This : Intergenerational Play: Number 1 in Play Nationally



Add “Play Together” Equipment Pods along the Trail

FRIENDSHIP SWING



OUTDOOR CARDIO WALKER



SPINNER



But Keep it Low Key!!!!

Some of the Potential Equipment

Keep in Mind Many Heritage Oaks along Green Bay



1800s Oak Forests accounted for 60 % of the state's trees

Today, of what remains only 5 percent are Oaks

Altamanu  Inc.
landscape architecture + urban design + planning


SMP GROUP
SMP GROUP, INC.


GLENCOE
PARK DISTRICT

Segments of the Project

The Quad



Gateway
Veterans Memorial
Display Gardens
Oaks and Elms
Liza's Gazebo

Existing Conditions Analysis

Sculpture Garden The Quad



Breakwater
Sculpture
Oaks and Elms

Gateway
Veterans Memorial
Display Gardens
Arboretum
Liza's Gazebo

Existing Conditions Analysis

Lincoln & Crescent Sculpture Garden The Quad



Playground
 Topography
 Head of Ravine
 Open/Sunken Field

Breakwater
 Sculpture
 Oaks and Elms

Gateway
 Veterans Memorial
 Display Gardens
 Arboretum
 Liza's Gazebo

Existing Conditions Analysis

Meadow Lincoln & Crescent Sculpture Garden The Quad



Wet Habitat
Volunteer Growth
Open Meadow

Playground
Topography
Head of Ravine
Open/Sunken Field

Breakwater
Sculpture
Oaks and Elms

Gateway
Veterans Memorial
Display Gardens
Arboretum
Liza's Gazebo

Existing Conditions Analysis

N. Woodland Meadow Lincoln & Crescent Sculpture Garden The Quad



Woodland w/
Wet Areas

Wet Habitat
Volunteer Growth
Open Meadow

Playground
Topography
Head of Ravine
Open/Sunken Field

Breakwater
Sculpture
Oaks and Elms

Gateway
Veterans Memorial
Display Gardens
Arboretum
Liza's Gazebo

Existing Conditions Analysis

N. Gateway Pk N. Woodland Meadow Lincoln & Crescent Sculpture Garden The Quad



Open Field
Volunteer Growth
Stone Walls
Takiff Center

Woodland w/
Wet Areas

Wet Habitat
Volunteer Growth
Open Meadow

Playground
Topography
Head of Ravine
Open/Sunken Field

Breakwater
Sculpture
Oaks and Elms

Gateway
Veterans Memorial
Display Gardens
Arboretum
Liza's Gazebo

Existing Conditions Analysis



“The Quad”

Existing Desire Lines (Like a University Quad)



Desire Lines lead to the Station and Downtown

“The Quad”



Northern Desire Line begins on Beach Road

Altamanu  Inc.
landscape architecture + urban design + planning


SMP GROUP
www.smpgroup.com


GLENCOE
PARK DISTRICT
www.glencoe.org



Passes by Ancient Oaks

Altamanu  Inc.
landscape architecture + urban design + planning


SMP GROUP
INCORPORATED


GLENCOE
PARK DISTRICT

Practical Recreational : Basketball



“The Quad”

Altamanu  Inc.
landscape architecture + urban design + planning


SMP GROUP
smpgroup.com


GLENCOE
PARK DISTRICT
glencoe.org

However there is a Sacred Element



Entry

However there is a Sacred Element



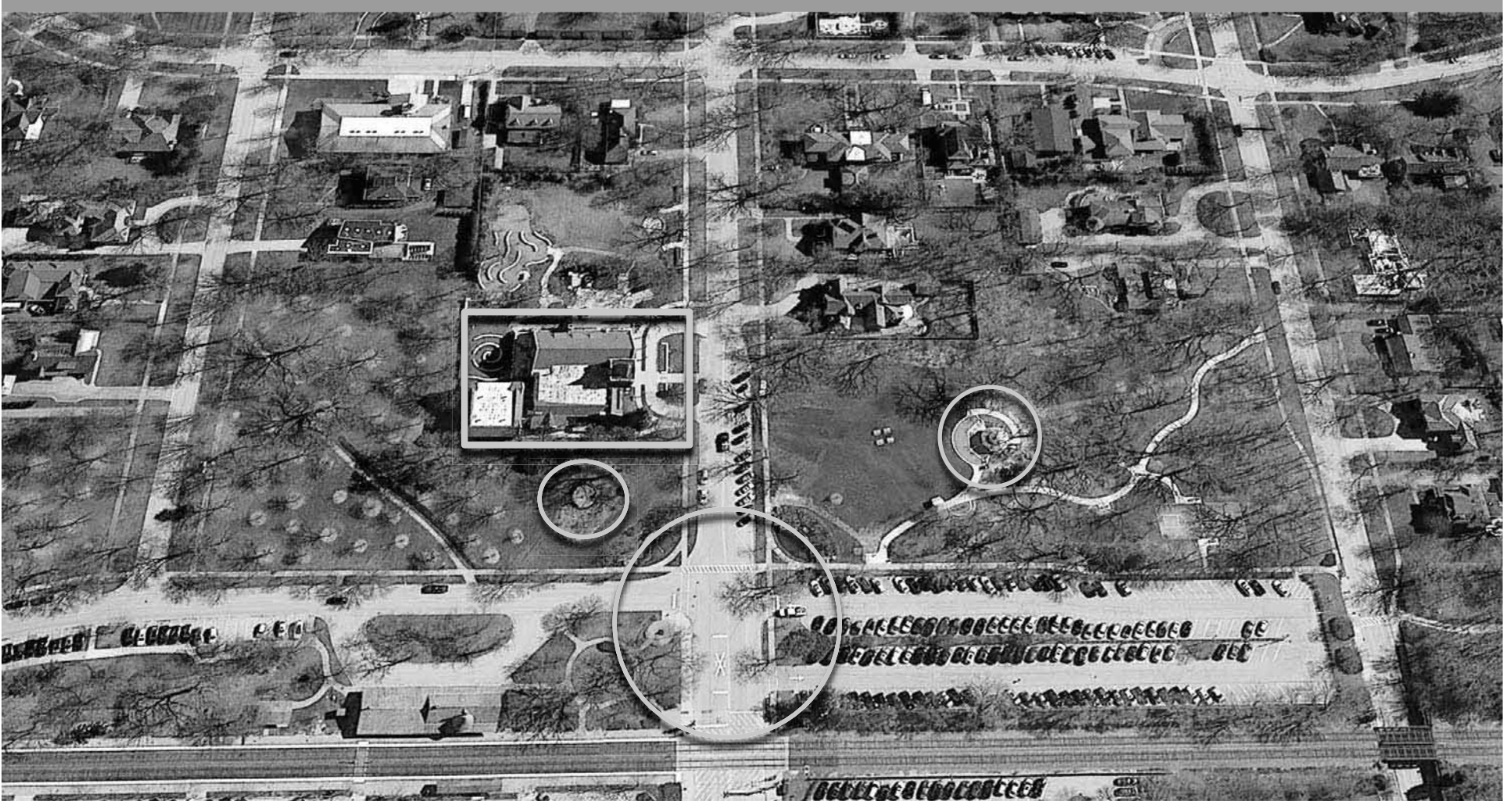
Entry, Veterans Memorial,

However there is a Sacred Element



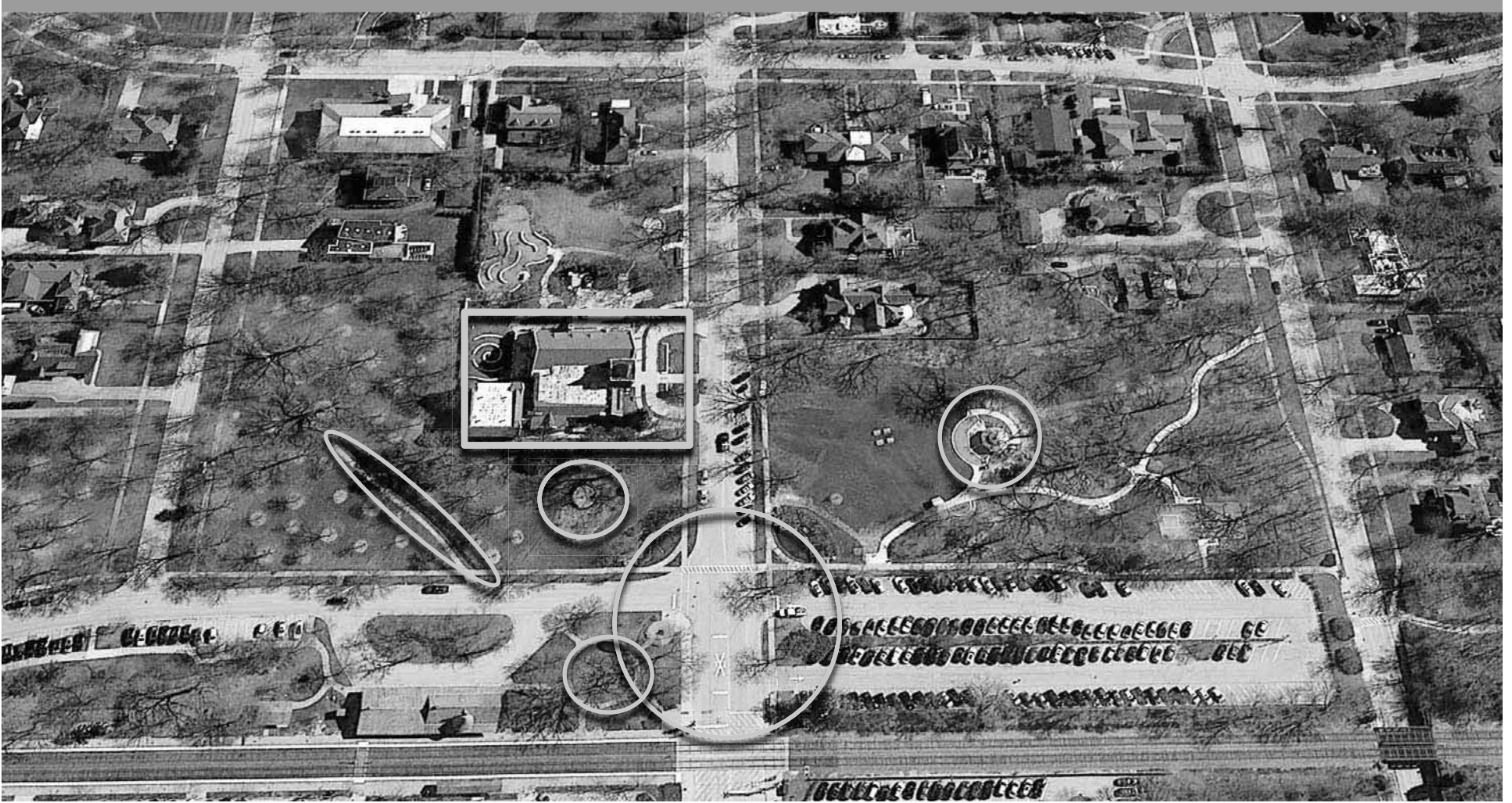
Entry, Veterans Memorial, Church,

However there is a Sacred Element



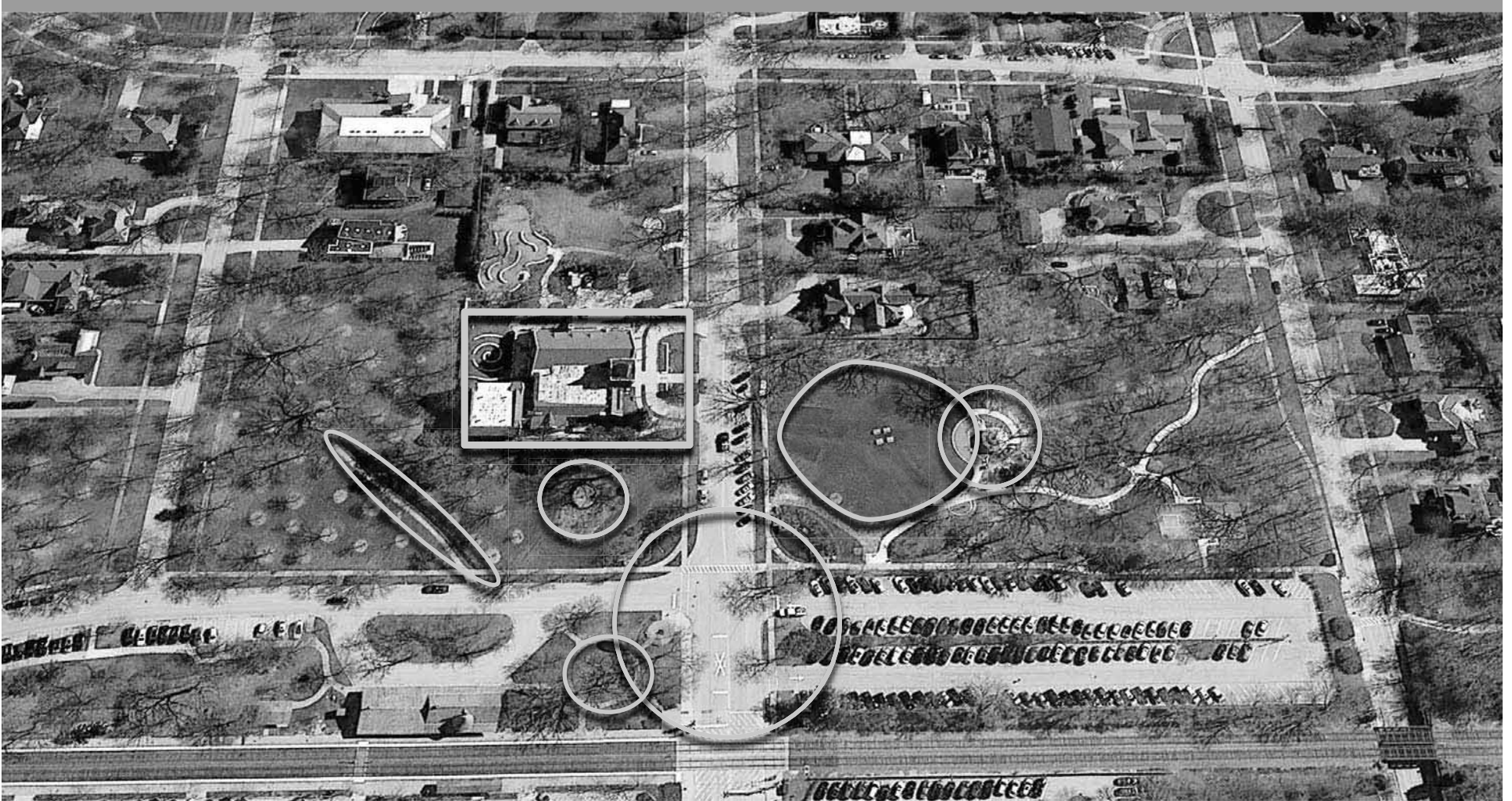
Entry, Veterans Memorial, Church, Liza's Gazebo,

However there is a Sacred Element



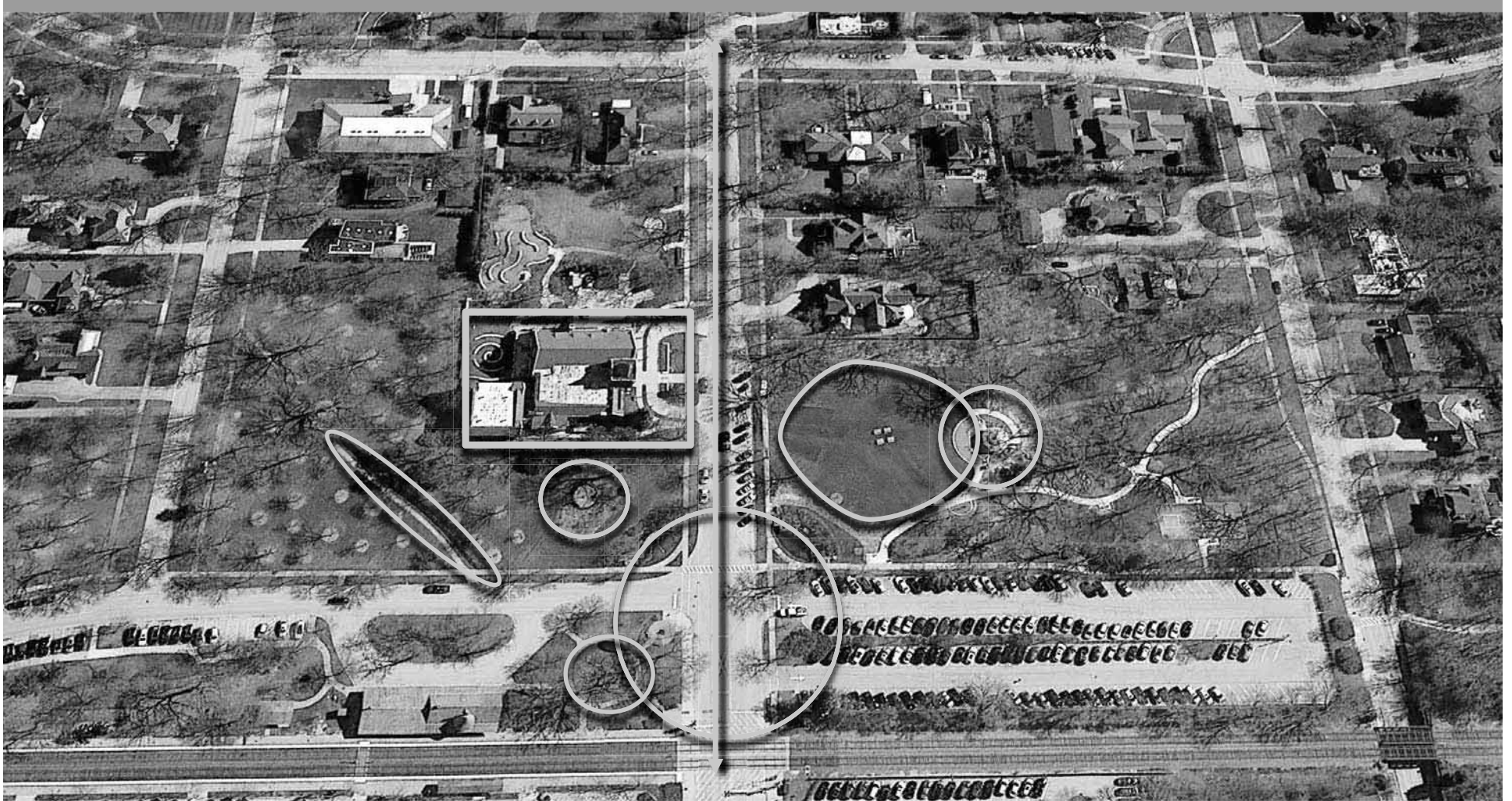
Entry, Veterans Memorial, Church, Liza's Gazebo, Gardens,

However there is a Sacred Element



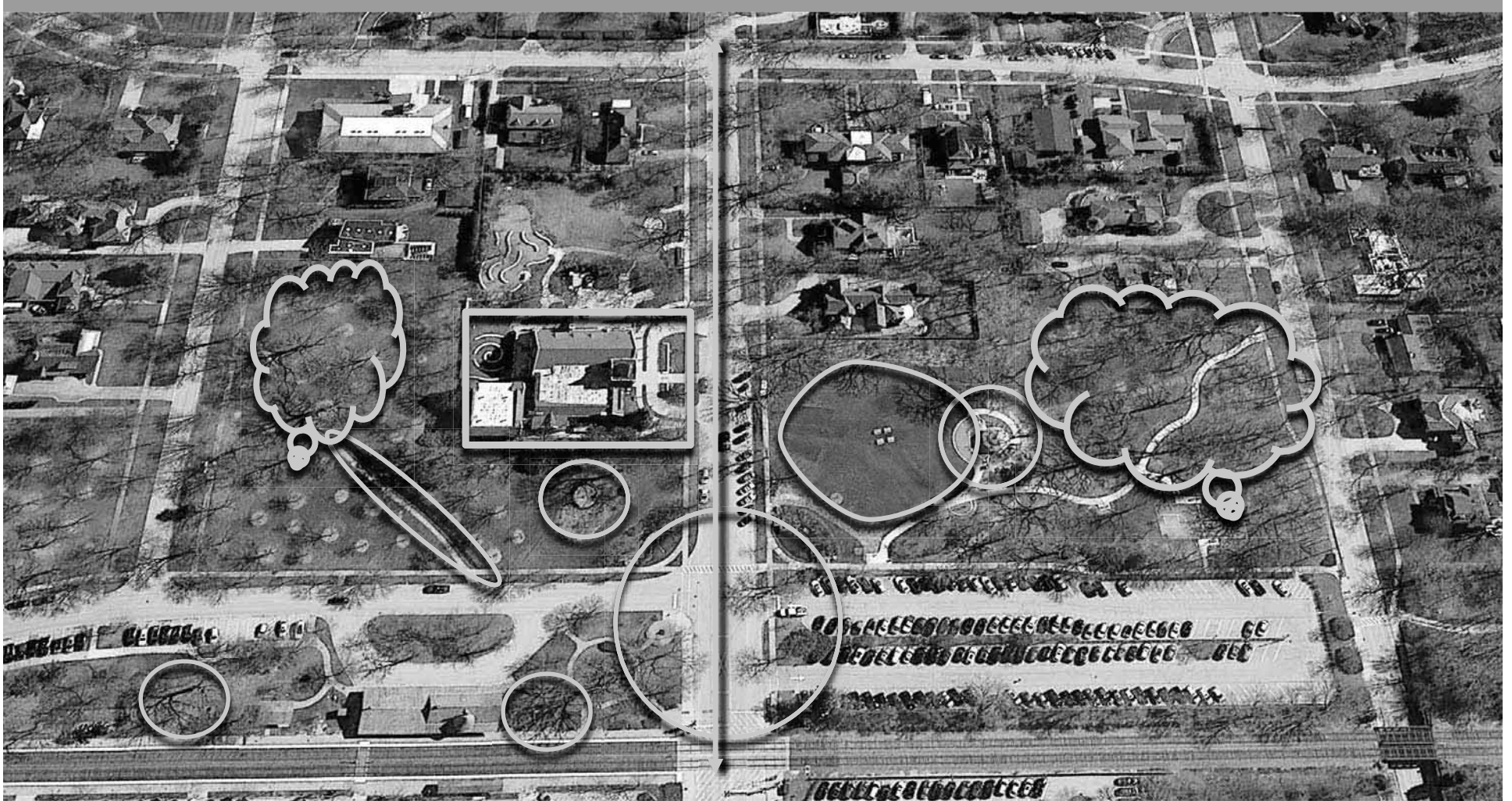
Entry, Veterans Memorial, Church, Liza's Gazebo, Gardens,
Community Gathering,

However there is a Sacred Element



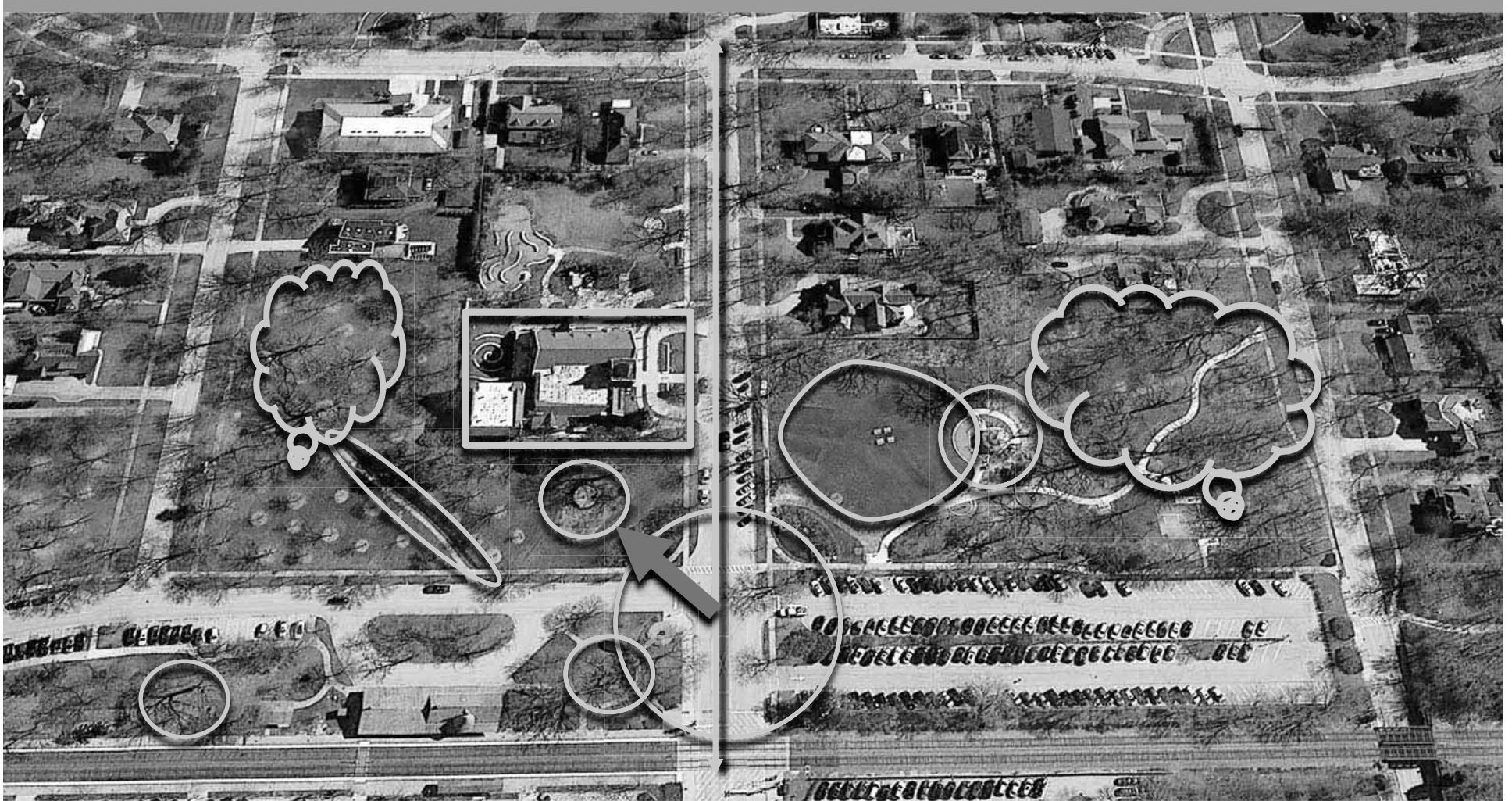
Entry, Veterans Memorial, Church, Liza's Gazebo, Gardens, Community Gathering, Link to the Lake/Downtown

However there is a Sacred Element



And Superb Oaks and other Mature Trees

Scope is From Park Avenue North



Start with Entry and Veterans Memorial



Gateway Planting on Park Avenue

Altamanu Inc.
landscape architecture + urban design + planning

SMP GROUP



Attractive Planting and Stone Walls but Domestic in Scale



Gateway Planting on Park Avenue



Google Earth

Existing Stone Walls and Veterans Memorial

Altamanu Inc.
landscape architecture + urban design + planning

SMP GROUP

GLENCOE
PARK DISTRICT



Existing Stone Walls and Veterans Memorial

Altamanu Inc.
landscape architecture + urban design + planning





Attractive Up Close

Altamanu  Inc.
landscape architecture + urban design + planning


SMP GROUP
www.smpgroup.com


GLENCOE
PARK DISTRICT
www.glencoe.org



Veterans Memorial Hidden and No ADA Access Altamanu Inc.

landscape architecture + urban design + planning





Existing

Altamanu  Inc.
landscape architecture + urban design + planning


SMP GROUP
www.smpgroup.com


GLENCOE
PARK DISTRICT
www.glencoeparkdistrict.com



1st Proposed Entry and Veterans Memorial

Expose Stonework, Keep Some Area for Flower Display, Provide Views to Memorial, Complete Mound, Add Walls

Altamanu  Inc.
landscape architecture + urban design + planning


SMP GROUP
INCORPORATED


GLENCOE
PARK DISTRICT



Residents stated that Cobbles were not suitable for bikes. We can use other Pavers

Altamanu  Inc.
landscape architecture + urban design + planning


SMP GROUP


GLENCOE
PARK DISTRICT



Existing View to Memorial from Green Bay

Altamanu  Inc.
landscape architecture + urban design + planning


SMP GROUP
www.smpgroup.com


GLENCOE
PARK DISTRICT
www.glencoe.org



Proposed View of Expanded Memorial from Old Green Bay



Existing Veterans Memorial

Altamanu  Inc.
landscape architecture + urban design + planning


SMP GROUP
www.smpgroup.com


GLENCOE
PARK DISTRICT
www.glencoe.org

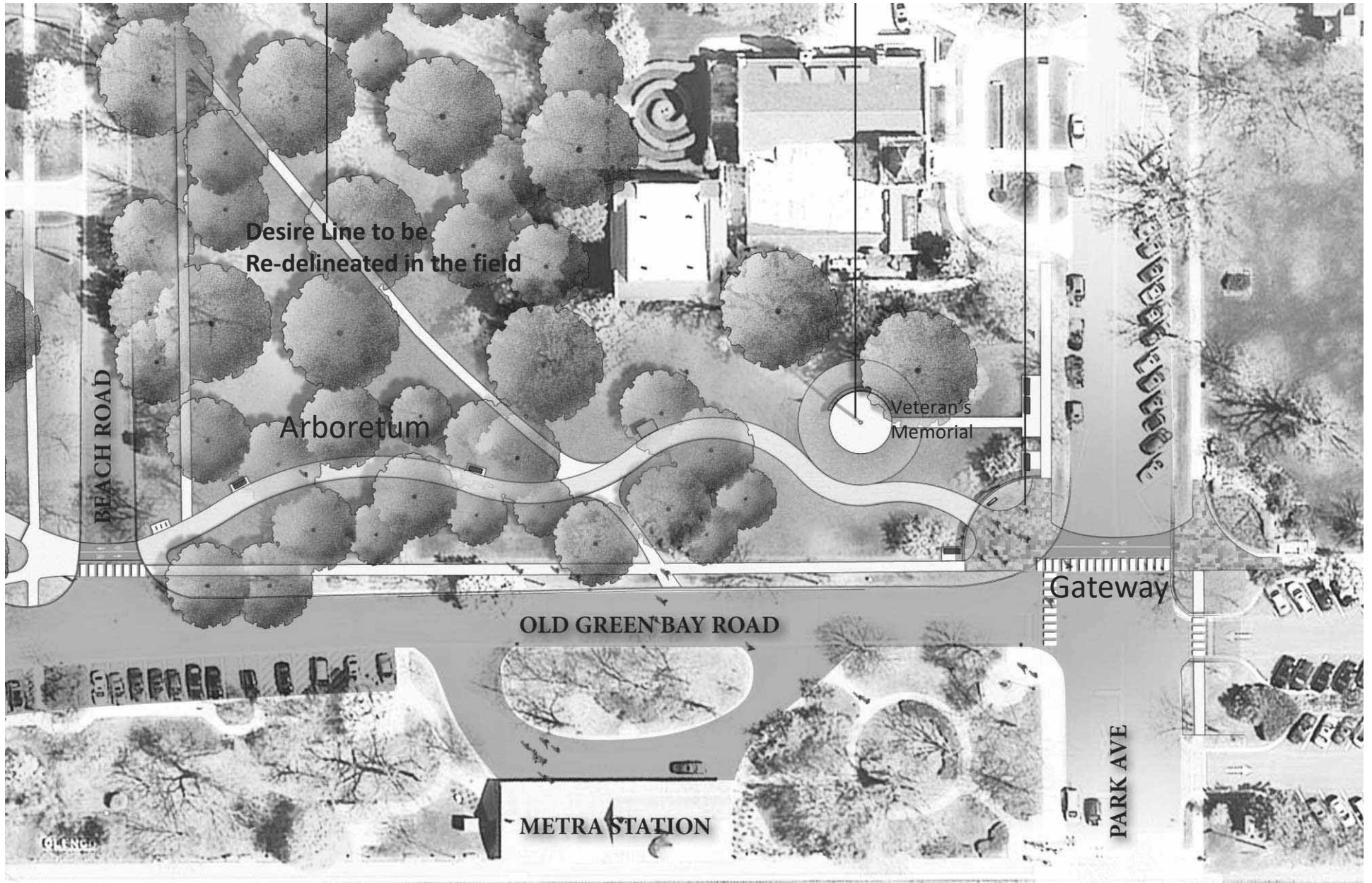


Proposed: Accessible, Dignified

Altamanu  Inc.
landscape architecture + urban design + planning


SMP GROUP
INCORPORATED


GLENCOE
PARK DISTRICT



The Proposed Plan for the Quad

Sculpture Garden The Quad

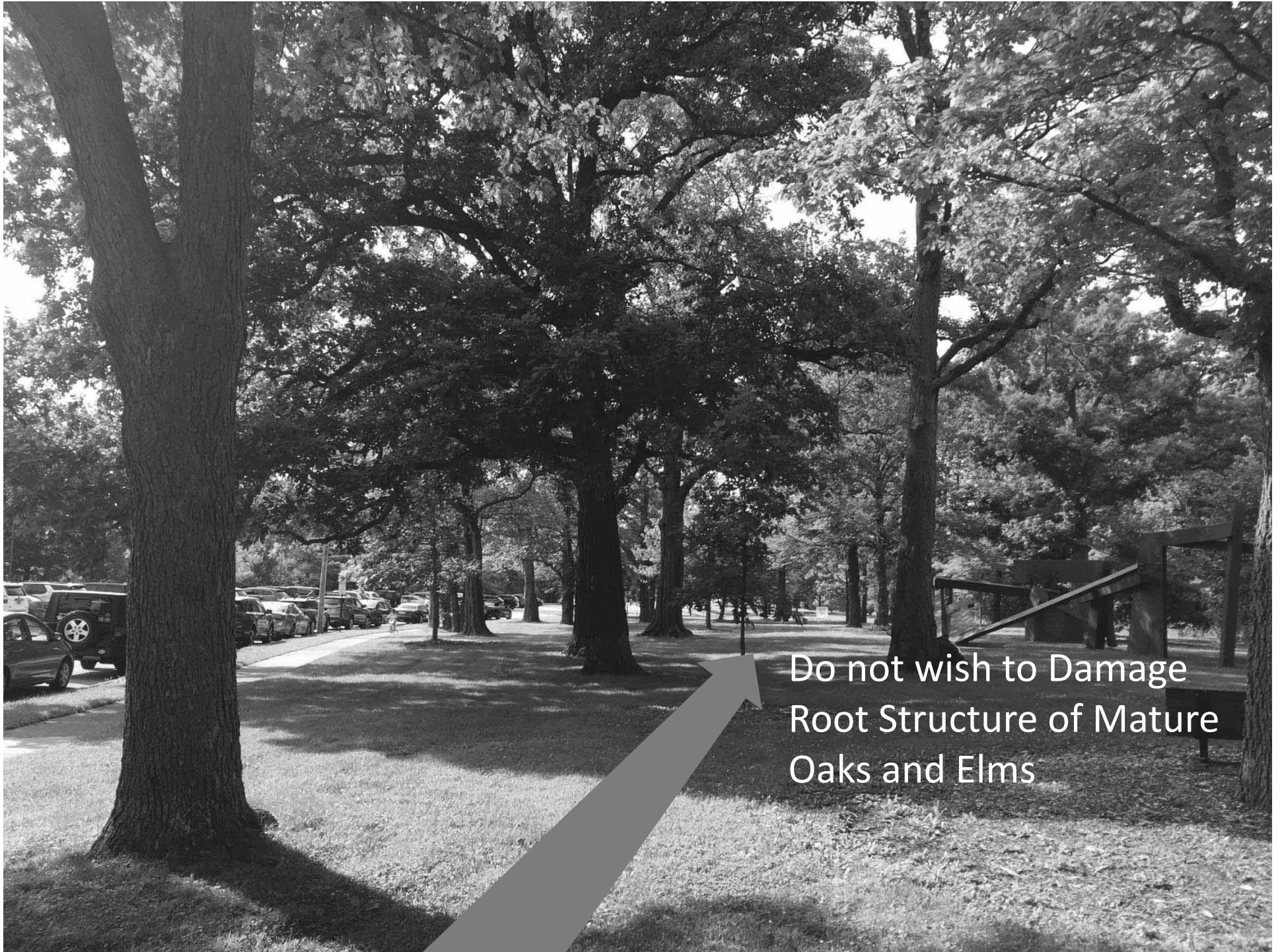


Breakwater
Sculpture
Oaks & Elms

Gateway
Veterans Memorial
Display Gardens
Oaks Set Back
Band Shell

Existing Conditions Analysis





Do not wish to Damage
Root Structure of Mature
Oaks and Elms



There are Two Proposals
Proposal 1: Swing Path East To Open Space and Younger Trees



Swing Path East : To Open Space and Younger Trees
Add a Substantial Tree and Shrub Buffer to East



Plenty of Space



Then back again to the West





Proposal 2 : Hug the Sculpture





Add Root Aeration Matting to Elm

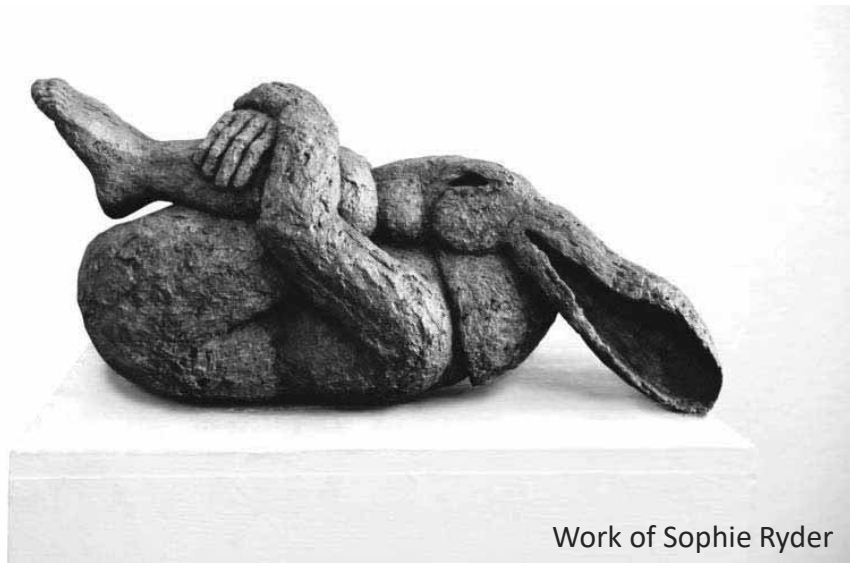


Example Root Aeration Matting



Add Sculpture : But be Restrained in Choices and location
Could be Rotating Pieces on-loan

Add Sculpture Over Time



Work of Sophie Ryder



Add Sculpture Over Time



Add Select Spring Ephemerals Mow after Flowering

Altamanu  Inc.
landscape architecture + urban design + planning

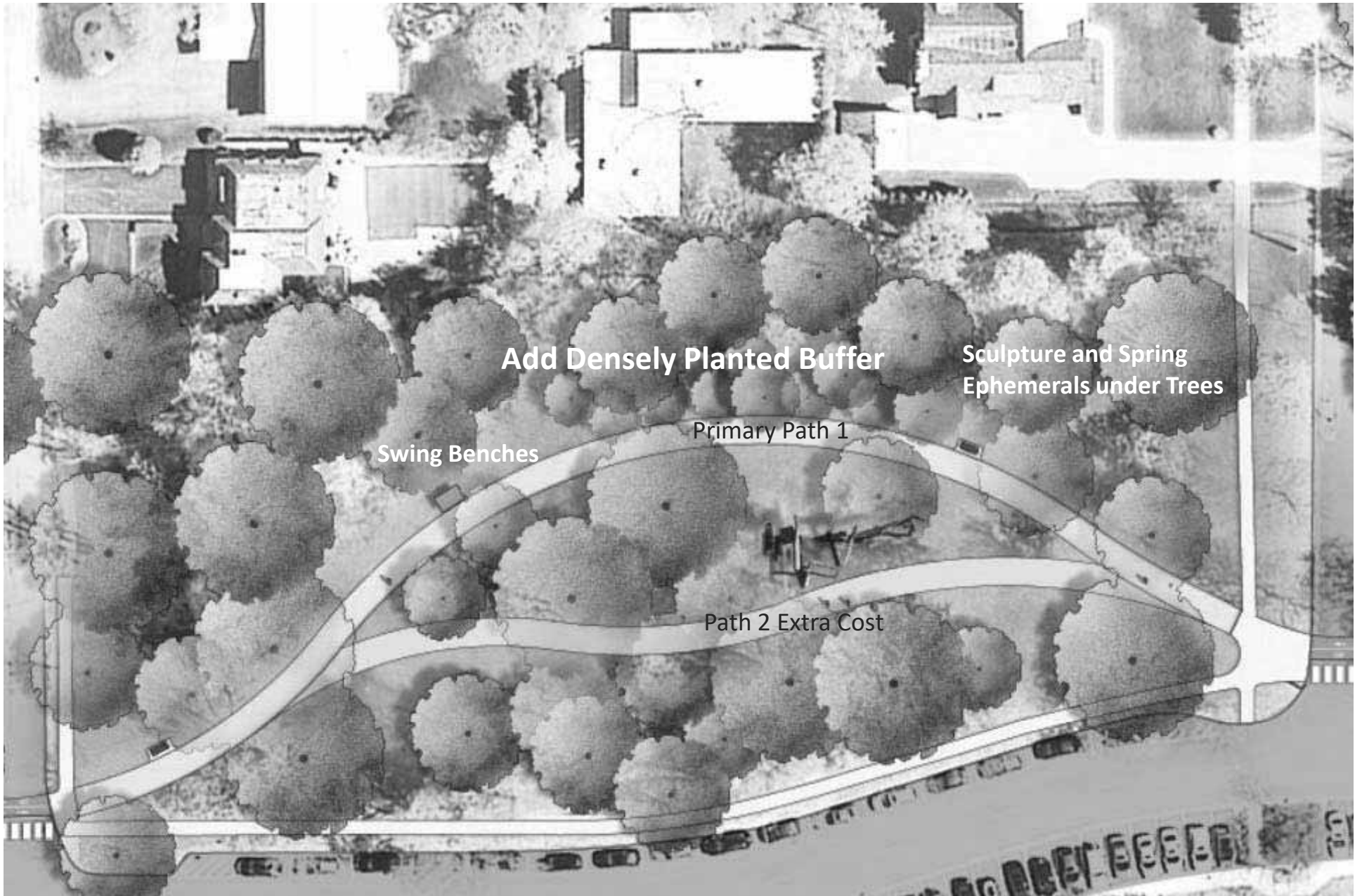

SMP GROUP


GLENCOE
PARK DISTRICT



Example Mills Park

Example of Spring Ephemerals, but we would use Natives



Proposed Plan for Sculpture Garden

Altamanu  Inc.
landscape architecture + urban design + planning


SMP GROUP


GLENCOE
PARK DISTRICT

Lincoln & Crescent Sculpture Garden The Quad



Playground
 Topography
 Head of Ravine
 Open/Sunken Field

Breakwater
 Sculpture
 Oaks and Elms

Gateway
 Veterans Memorial
 Display Gardens
 Arboretum
 Liza's Gazebo

Existing Conditions Analysis



Lincoln Dennis: Multi-Use Field

Altamanu  Inc.
landscape architecture + urban design + planning


SMP GROUP
INCORPORATED


GLENCOE
PARK DISTRICT



Lincoln Dennis: Open Space

Altamanu  Inc.
landscape architecture + urban design + planning


SMP GROUP
www.smpgroup.com


GLENCOE
PARK DISTRICT
www.glencoe.org



Lincoln Dennis : Drainage Issues

Altamanu  Inc.
landscape architecture + urban design + planning


SMP GROUP


GLENCOE
PARK DISTRICT



Lincoln Dennis: Use Topography

Altamanu  Inc.
landscape architecture + urban design + planning


SMP GROUP
www.smpgroup.com


GLENCOE
PARK DISTRICT



Use Topography & Add Native Planting

Altamanu Inc.
landscape architecture + urban design + planning

SMP GROUP
SMP GROUP

GLENCOE
PARK DISTRICT



Maintenance:

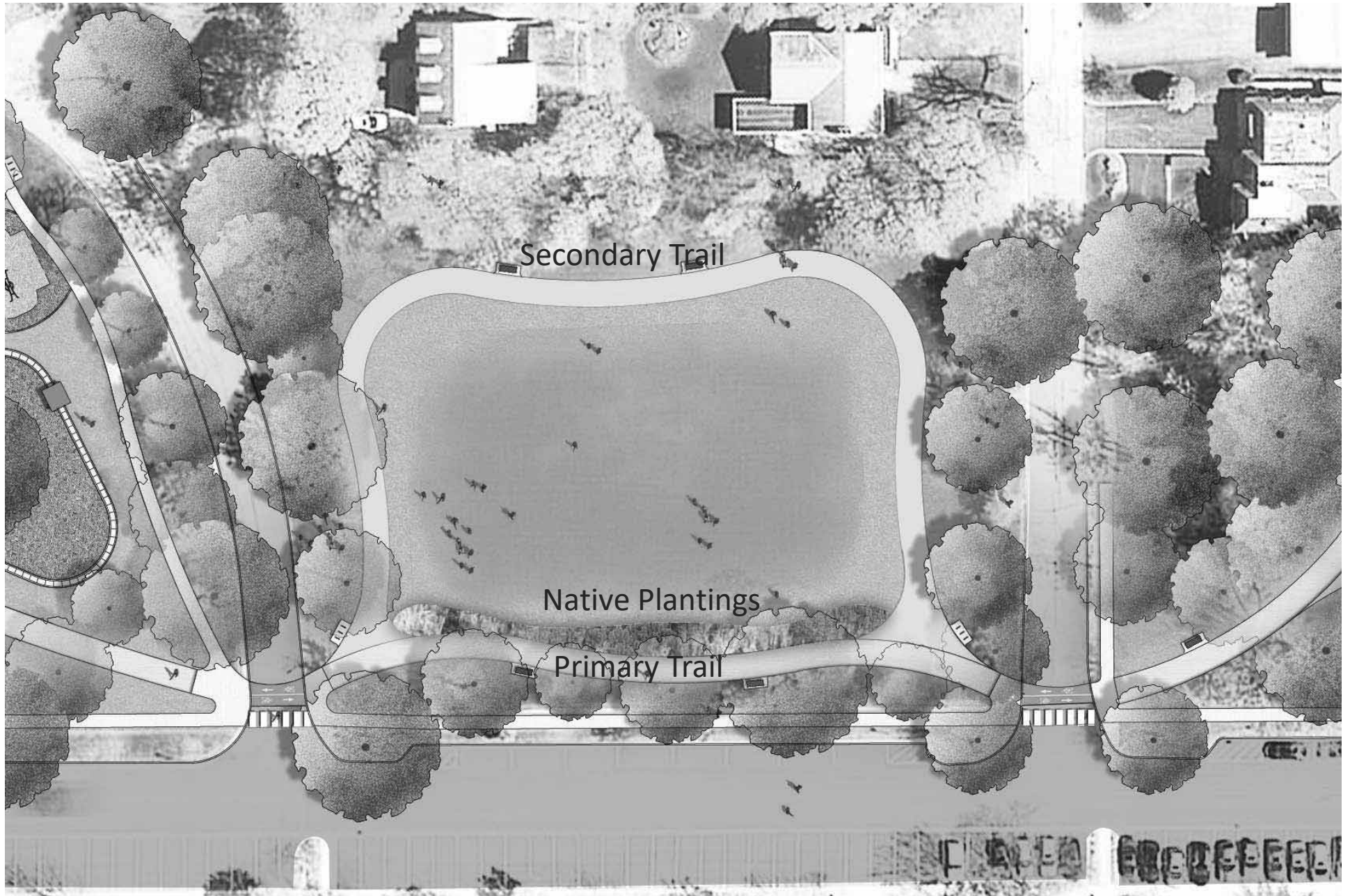
Turf Grass = **2.8 cents** / Sq. Ft. / Year

Natural Area = **16.2 cents** / Sq. Ft. / Year

Altamanu  Inc.
landscape architecture + urban design + planning


SMP GROUP
SMP GROUP, INC.


GLENCOE
PARK DISTRICT



1st Proposed Plan

Altamanu  Inc.
landscape architecture + urban design + planning


SMP GROUP


GLENCOE
PARK DISTRICT



Trail and Native Plantings

Current Plan After Public Comment

Altamanu Inc. 
landscape architecture + urban design + planning


SMP GROUP
INCORPORATED


GLENCOE
PARK DISTRICT



Lincoln Crescent

Altamanu  Inc.
landscape architecture + urban design + planning


SMP GROUP
SMP GROUP, LLC


GLENCOE
PARK DISTRICT



Existing Playground has to be Replaced



Existing Playground on Rise

Altamanu  Inc.
landscape architecture + urban design + planning


SMP GROUP
smpgroup.com


GLENCOE
PARK DISTRICT

Make use of the Slope as at West Park



Playground

Altamanu  Inc.
landscape architecture + urban design + planning


SMP GROUP
www.smpgroup.com


GLENCOE
PARK DISTRICT
www.glencoe.org



Potential Play Equipment

Altamanu  Inc.
 landscape architecture + urban design + planning



Other Potential Additions



Interactive Fountain, Small in Scale



Discovery Garden Oak Park Conservatory

Altamanu  Inc.
landscape architecture + urban design + planning


SMP GROUP
www.smpgroup.com


GLENCOE
PARK DISTRICT



Discovery Garden Oak Park Conservatory

Altamanu  Inc.
landscape architecture + urban design + planning


SMP GROUP
DESIGN + CONSTRUCTION


GLENCOE
PARK DISTRICT



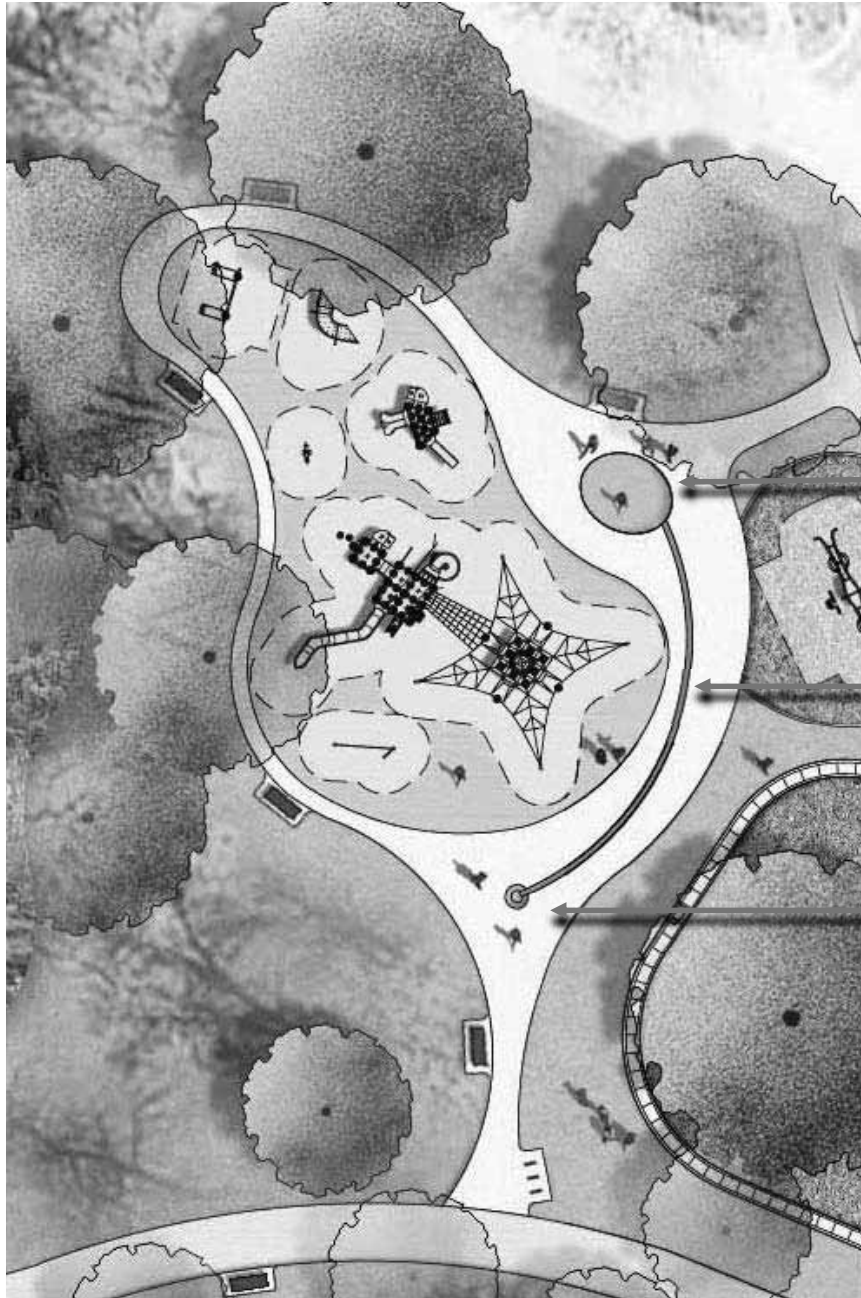
Discovery Garden Oak Park Conservatory

Altamanu  Inc.
landscape architecture + urban design + planning


SMP GROUP
www.smpgroup.com


GLENCOE
PARK DISTRICT
www.glencoe.org

Bring Both Concepts Together



Interactive Water Feature

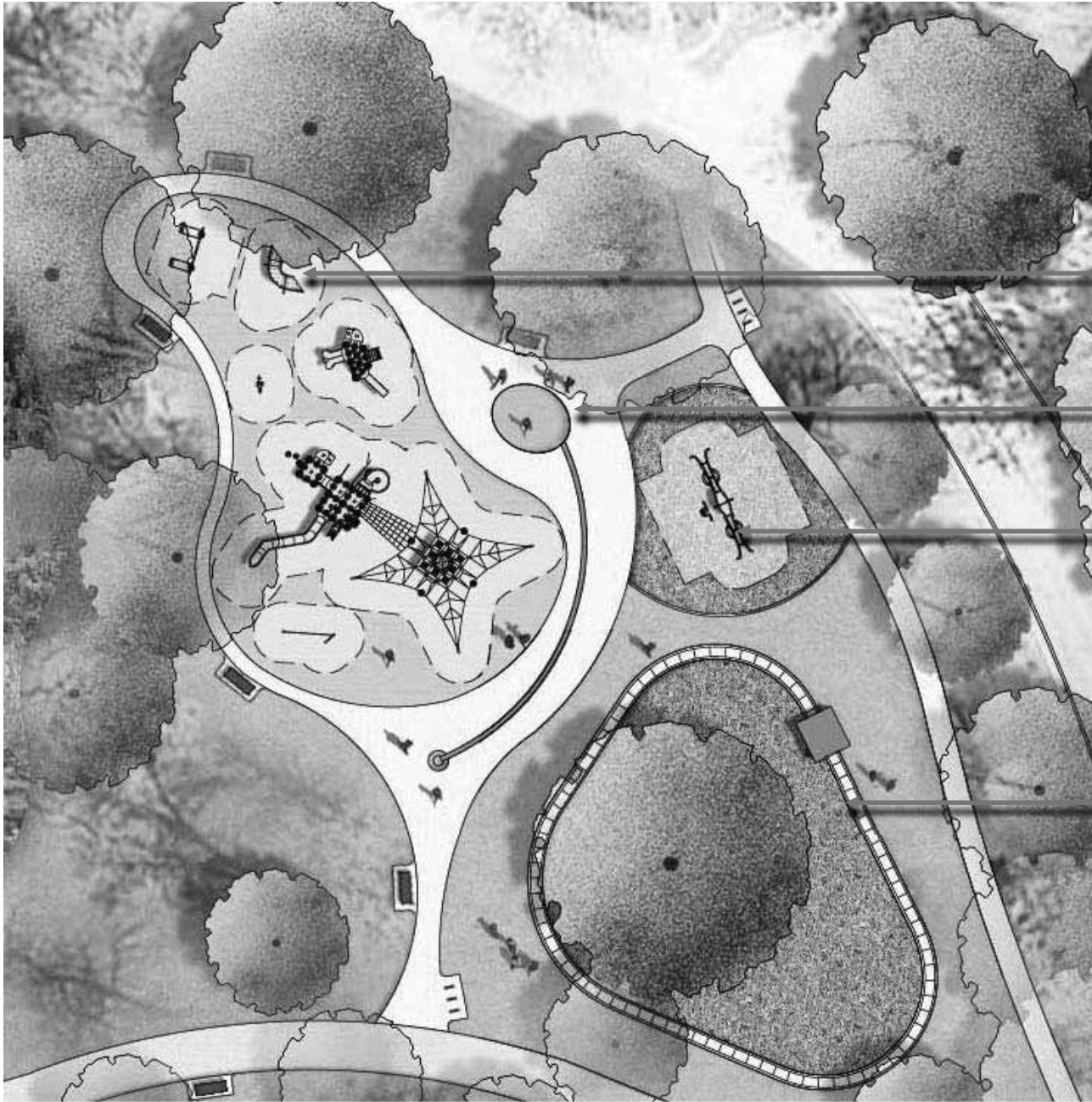
Runnel, runs down slope

Pool (connect to wet meadow planting and existing storm water catch basin)

Other Potential Additions



Example : Hand-Cranked Miniature Train



Main Playground

Water Fountain

Group Swings

Miniature Train

Potential Hand Driven Train



160 Feet to nearest
Residence to the SE

200 Feet to nearest
residence to the NE

Potential Hand Driven Train

Meadow



Wet Habitat
Volunteer Growth
Open Meadow

Existing Conditions Analysis



Pinch Point to Walden

Altamanu  Inc.
landscape architecture + urban design + planning


SMP GROUP
INCORPORATED


GLENCOE
PARK DISTRICT



Pinch Point



Dry, Drains to East

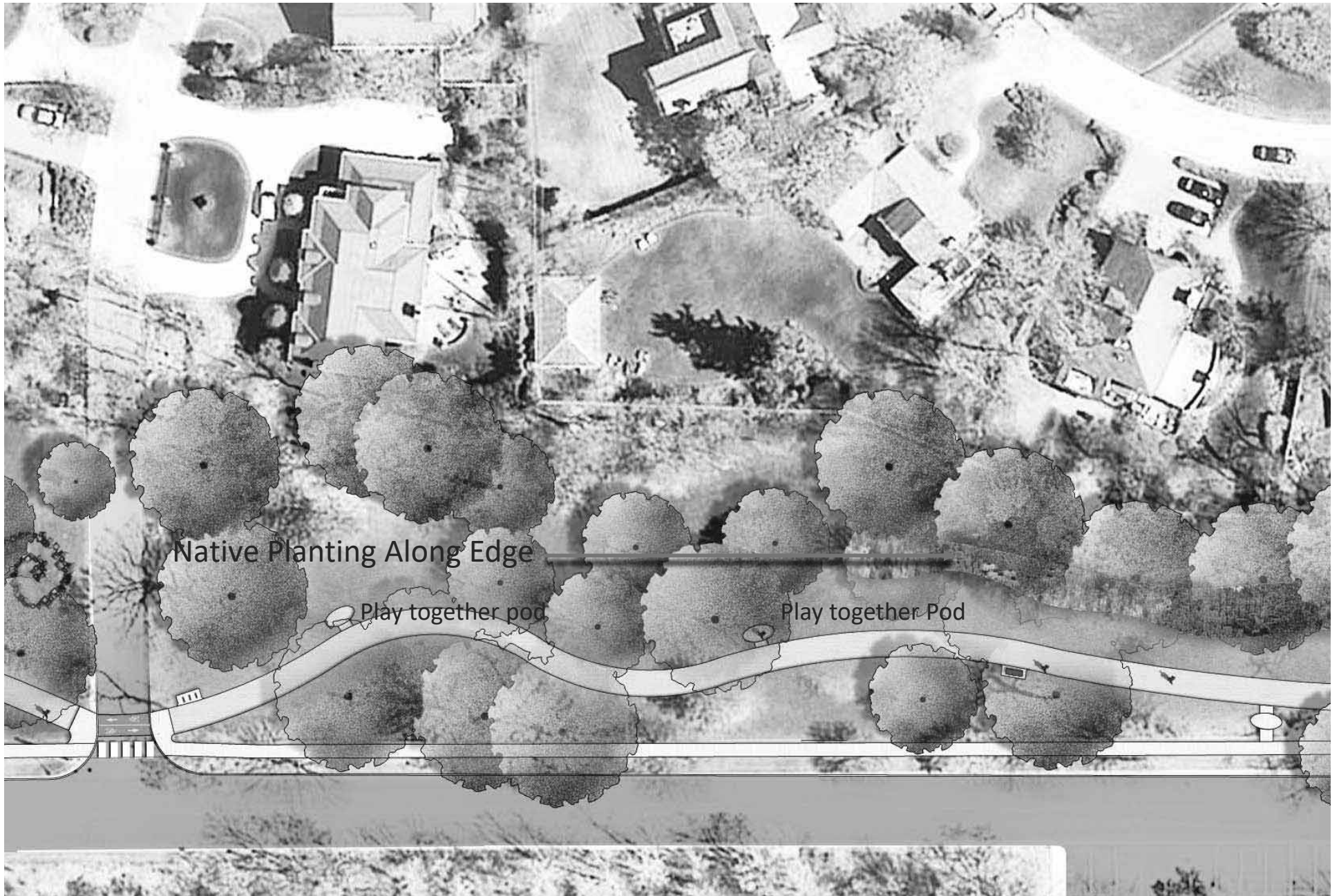
Altamanu  Inc.
landscape architecture + urban design + planning


SMP GROUP
www.smpgroup.com


GLENCOE
PARK DISTRICT



Wet Meadow



Native Planting Along Edge

Play together pod

Play together Pod

Meadow and Wet Meadow

Altamanu  Inc.
landscape architecture + urban design + planning


SMP GROUP
smpgroup.com


GLENCOE
PARK DISTRICT
glencoe.org

Woodland Discovery



Woodland w/
Wet Areas

Existing Conditions Analysis



Woodland Discovery



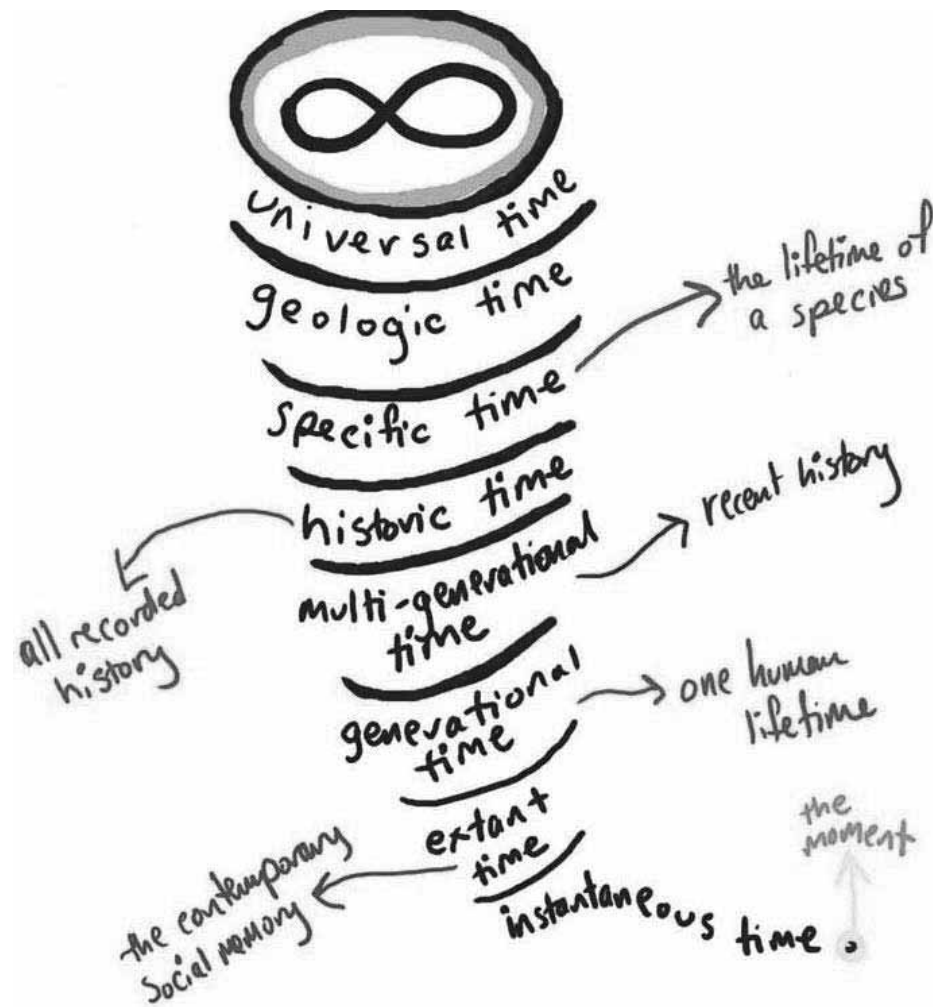
Direction to Team

- Create something Unique
- Something inspired by Nature
- Can be used for Fund Raising
- Can be Expanded Over-Time

-
- Create something Unique
 - Something inspired by Nature
 - Can be used for Fund Raising
 - Can be Expanded Over-Time

Create a Labyrinth & Tell The Story of Glencoe

Lines in the grass each with a different timeline and different local info?



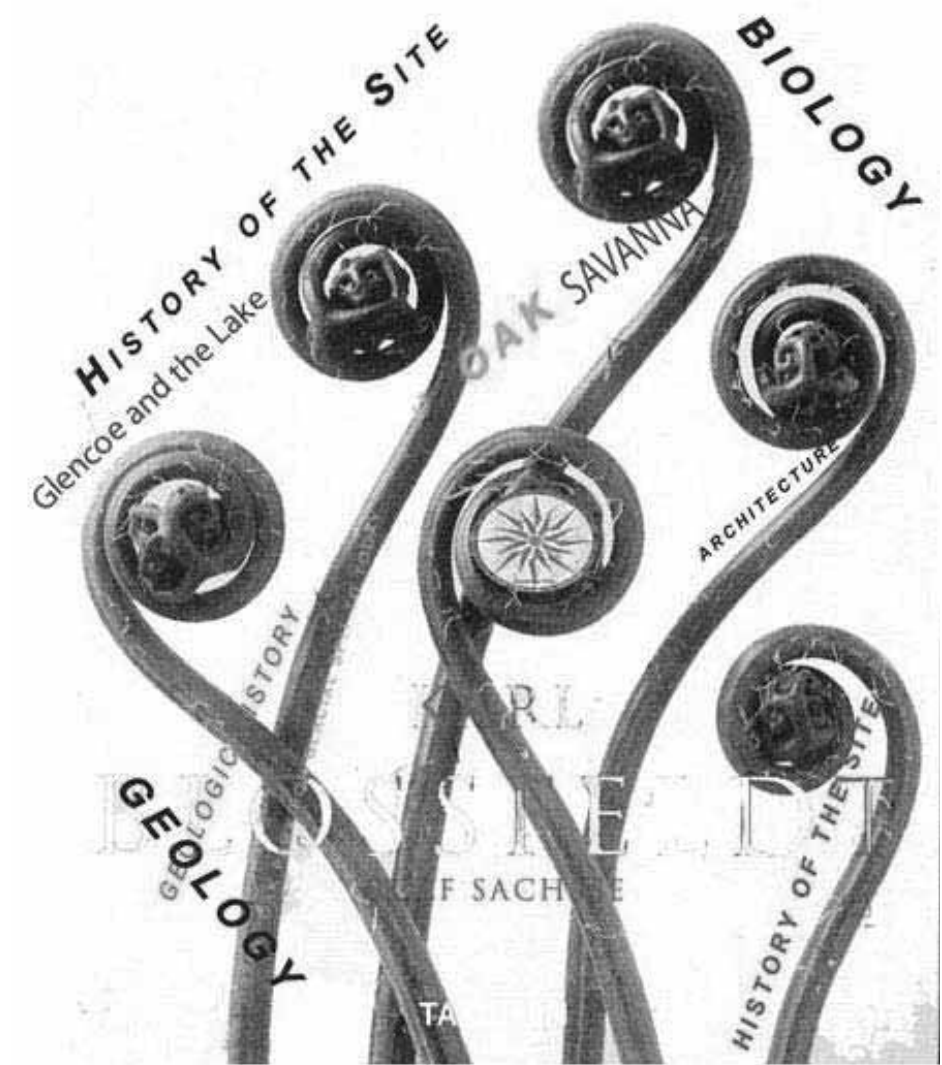
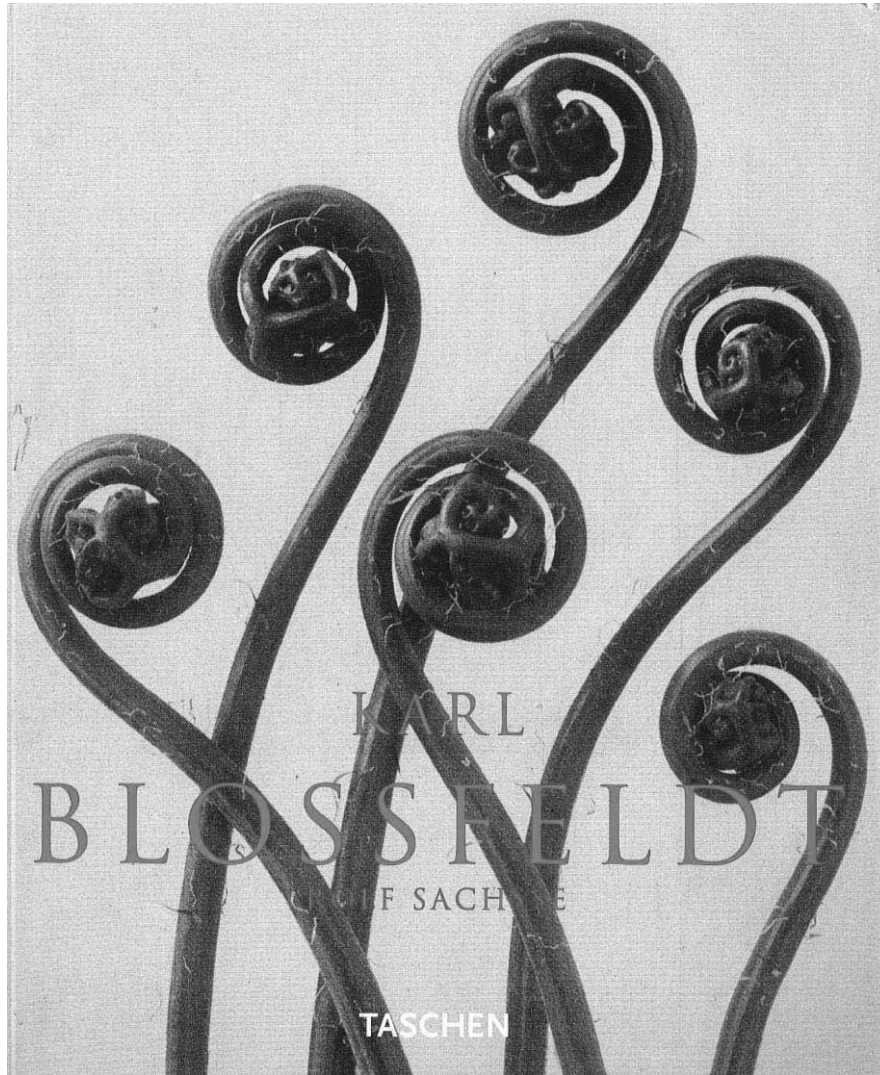
Woodland Discovery

Altamanu  Inc.
landscape architecture + urban design + planning


SMP GROUP


GLENCOE
PARK DISTRICT

Inspiration from Nature and Karl Blossfeldt

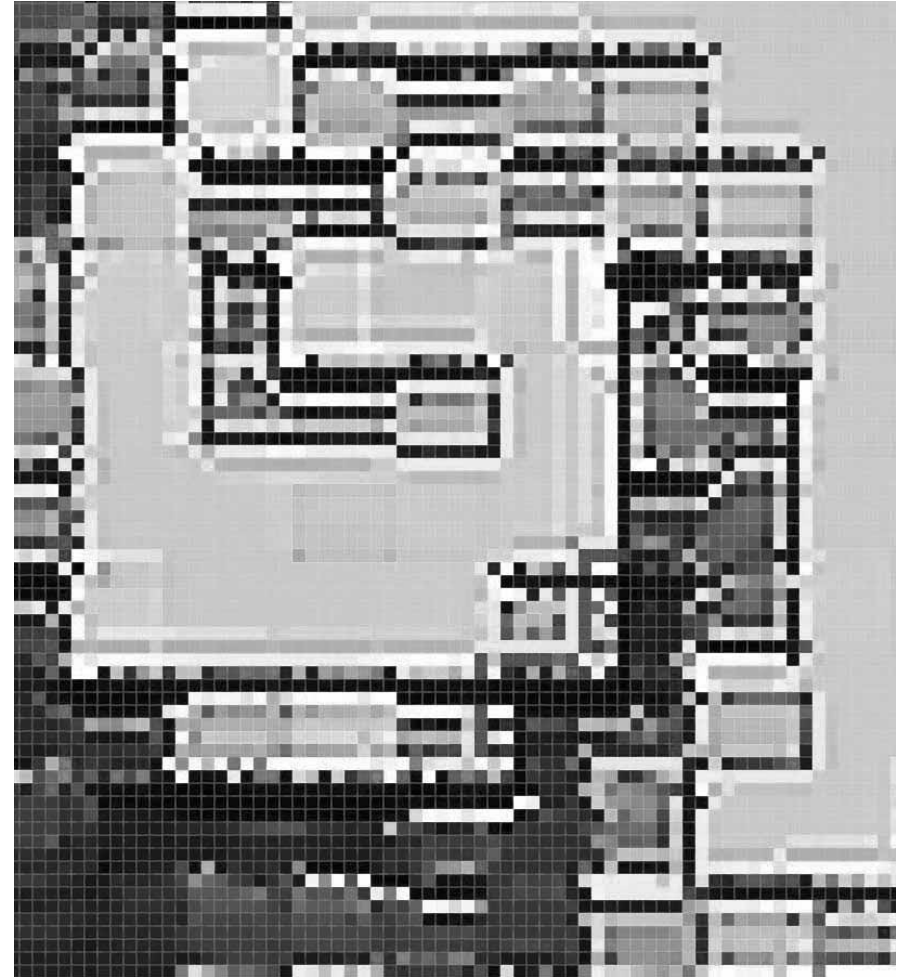
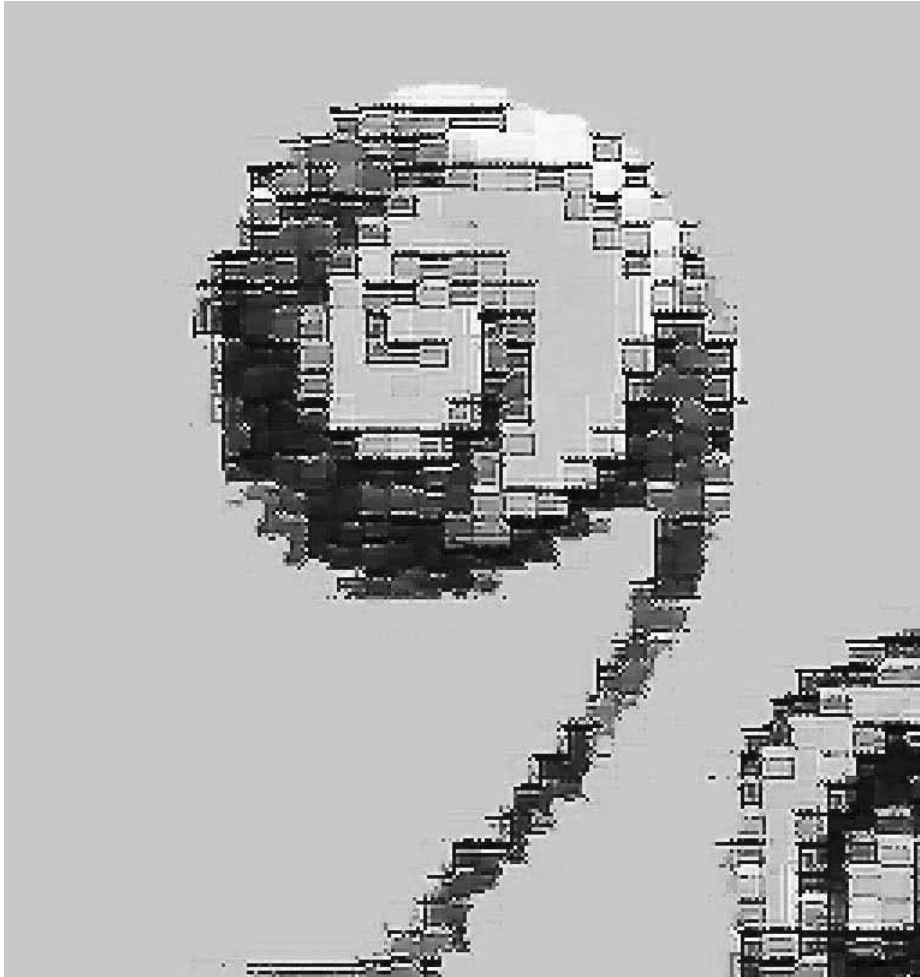


Woodland Discovery

Design Process : Pixelate and Make into Rectangles



Design Process : Can be any size and of any complexity
(Scale Invariance: Pattern Applies at all Scales)





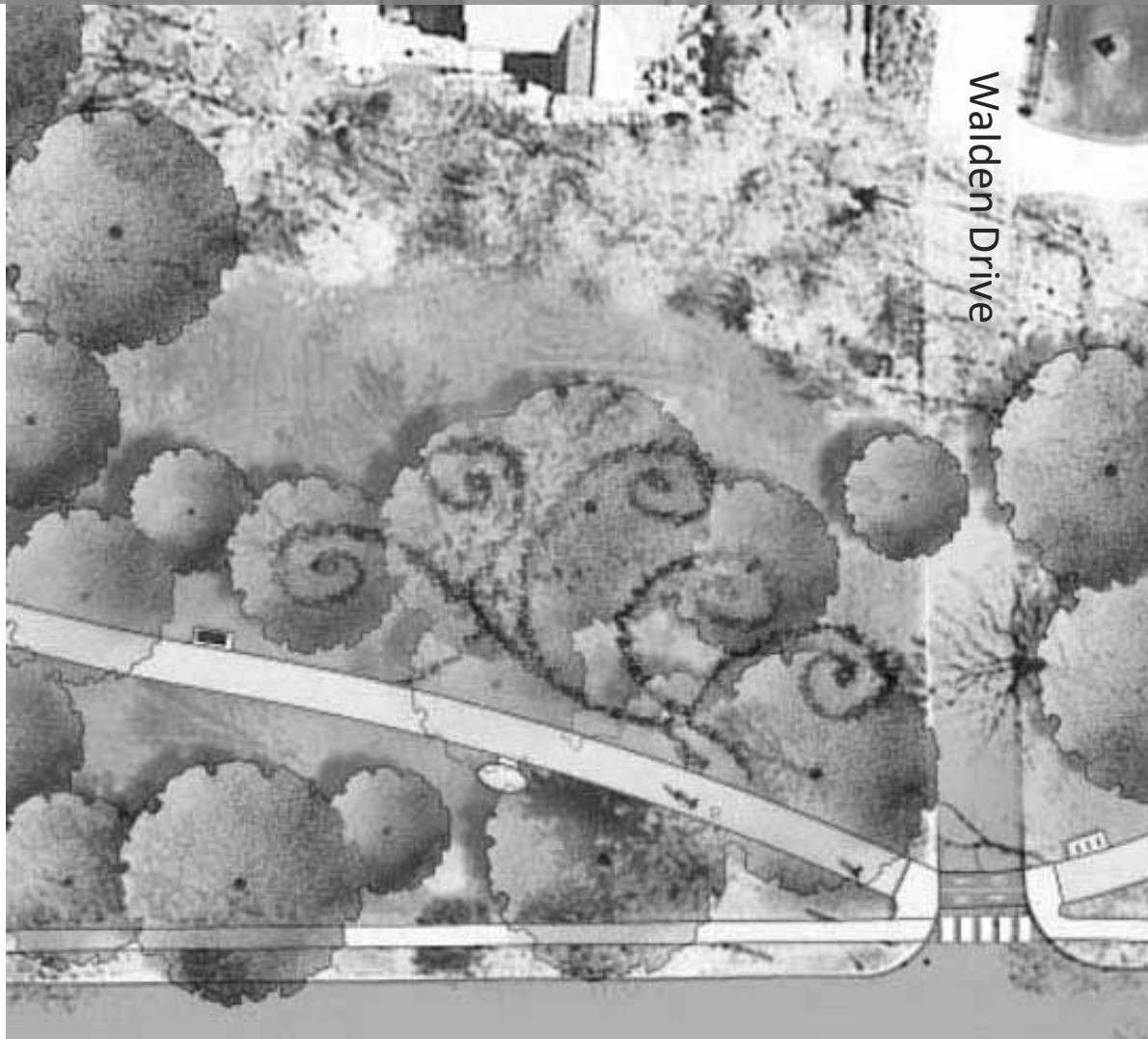
Example Labyrinth: Mills Park : A single Journey
"Unicursal"

Altamanu  Inc.
landscape architecture + urban design + planning


SMP GROUP


GLENCOE
PARK DISTRICT





Walden Drive

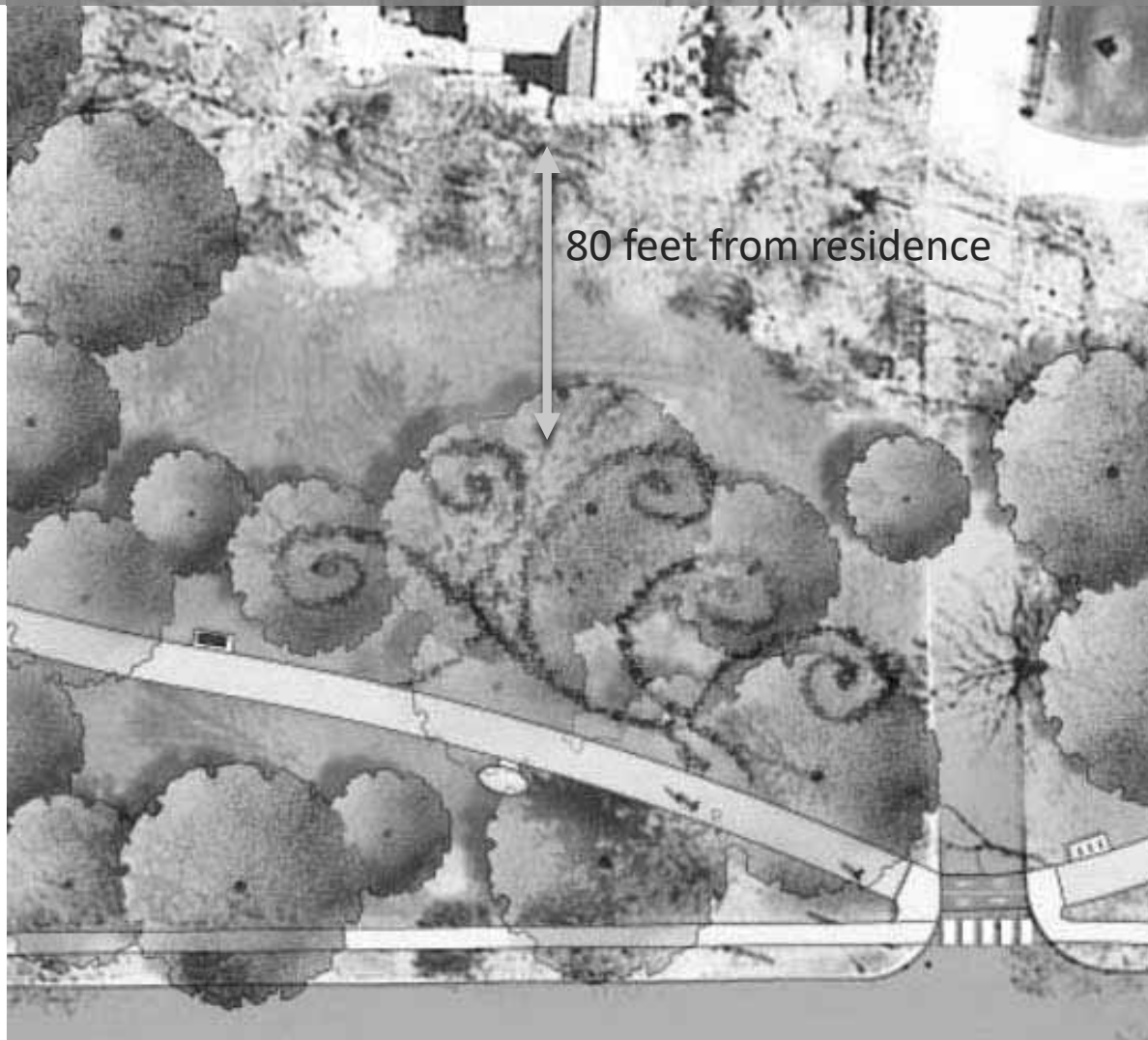
Glencoe's Woodland Labyrinth

Altamanu  Inc.
landscape architecture + urban design + planning


SMP GROUP
INCORPORATED

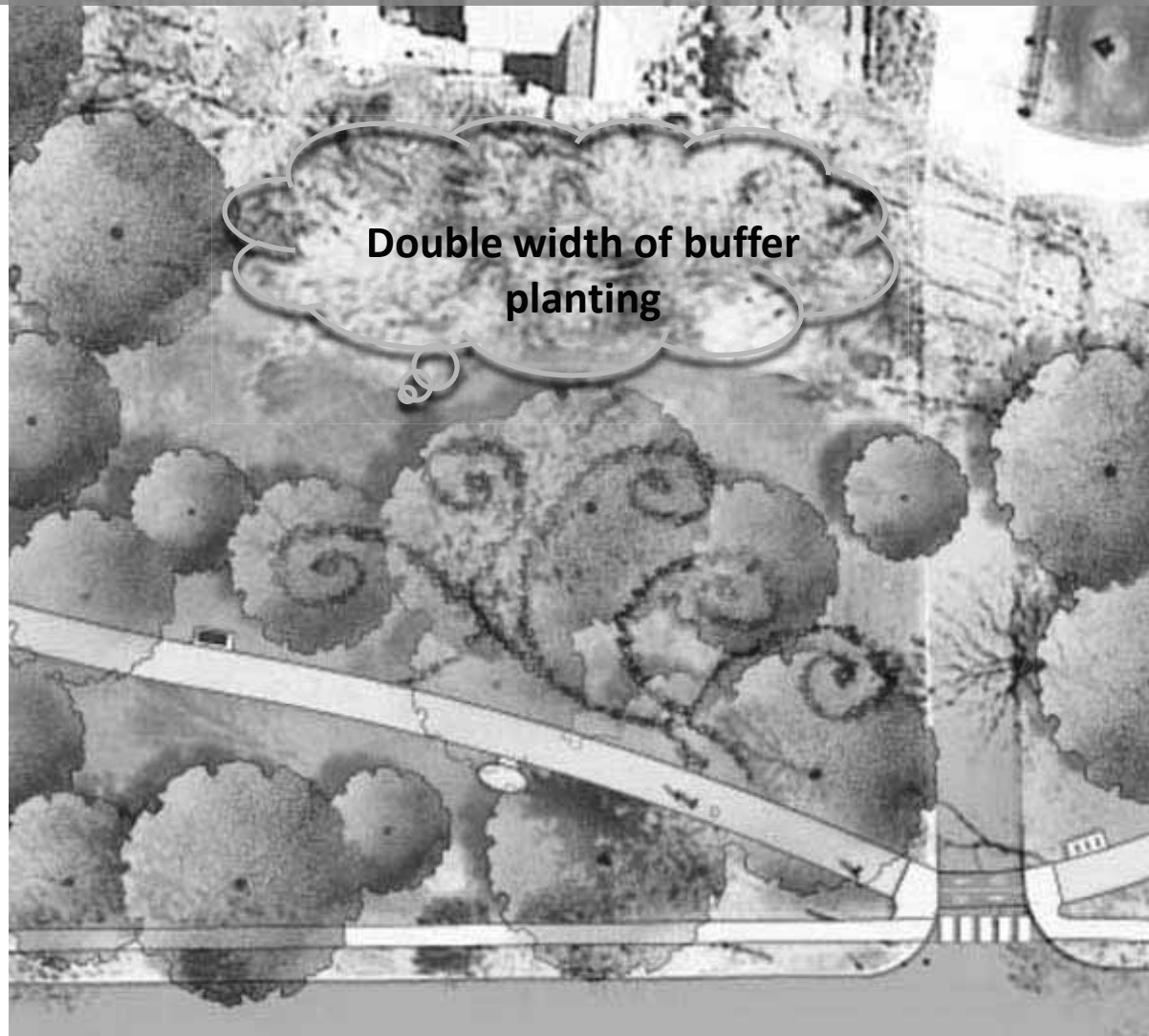

GLENCOE
PARK DISTRICT

80 Feet Minimum from Residence, It could be More



Glencoe's Woodland Labyrinth

And Double Width of Buffer Planting



Glencoe's Woodland Labyrinth

If we want to foster interest in cycling need events for kids



Woodland Discovery

Add a Children's Training Circuit

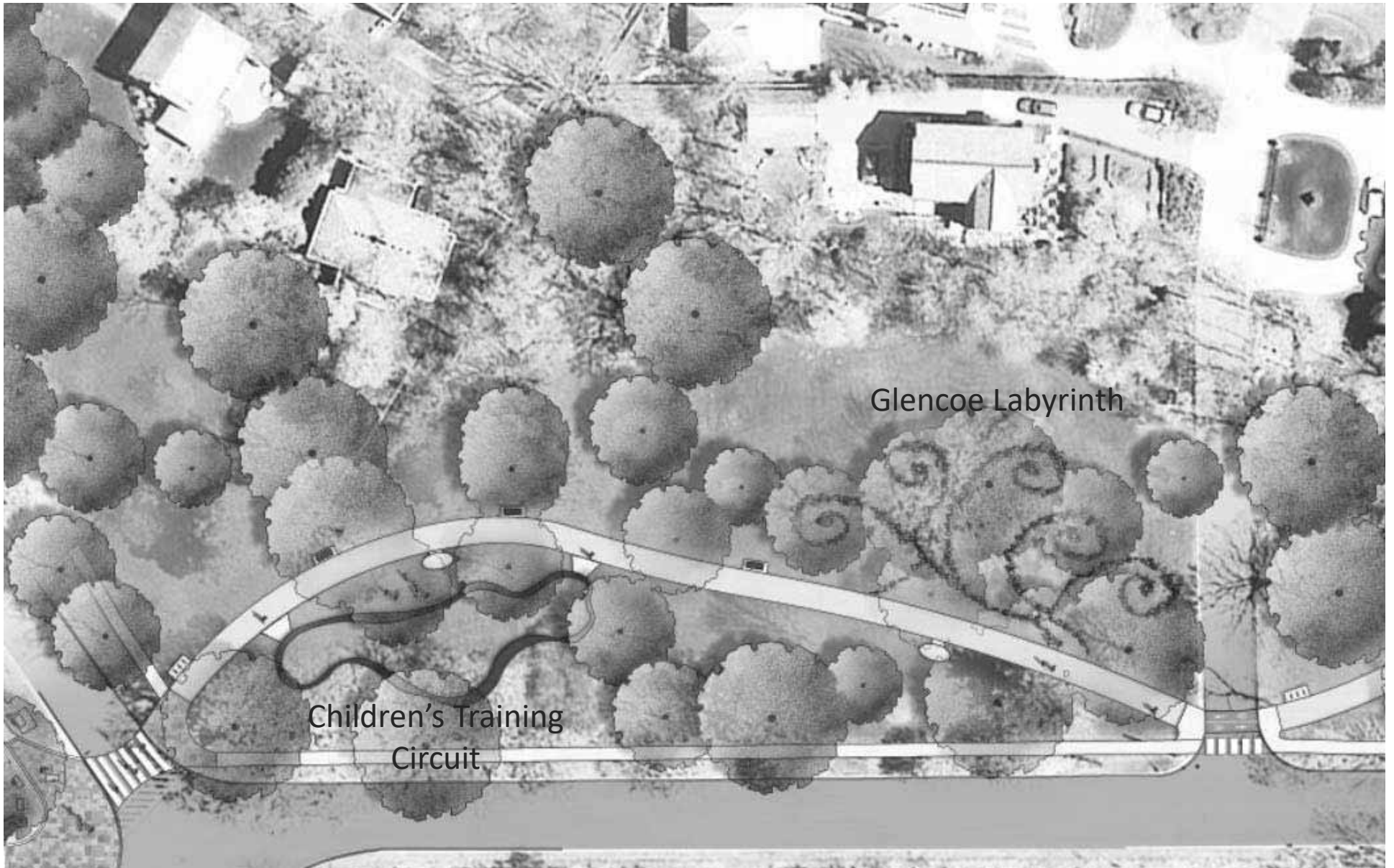


Woodland Discovery

Altamanu Inc. 
landscape architecture + urban design + planning


SMP GROUP
www.smpgroup.com


GLENCOE
PARK DISTRICT



Glencoe Labyrinth

Children's Training
Circuit

Plan of Woodland Discovery

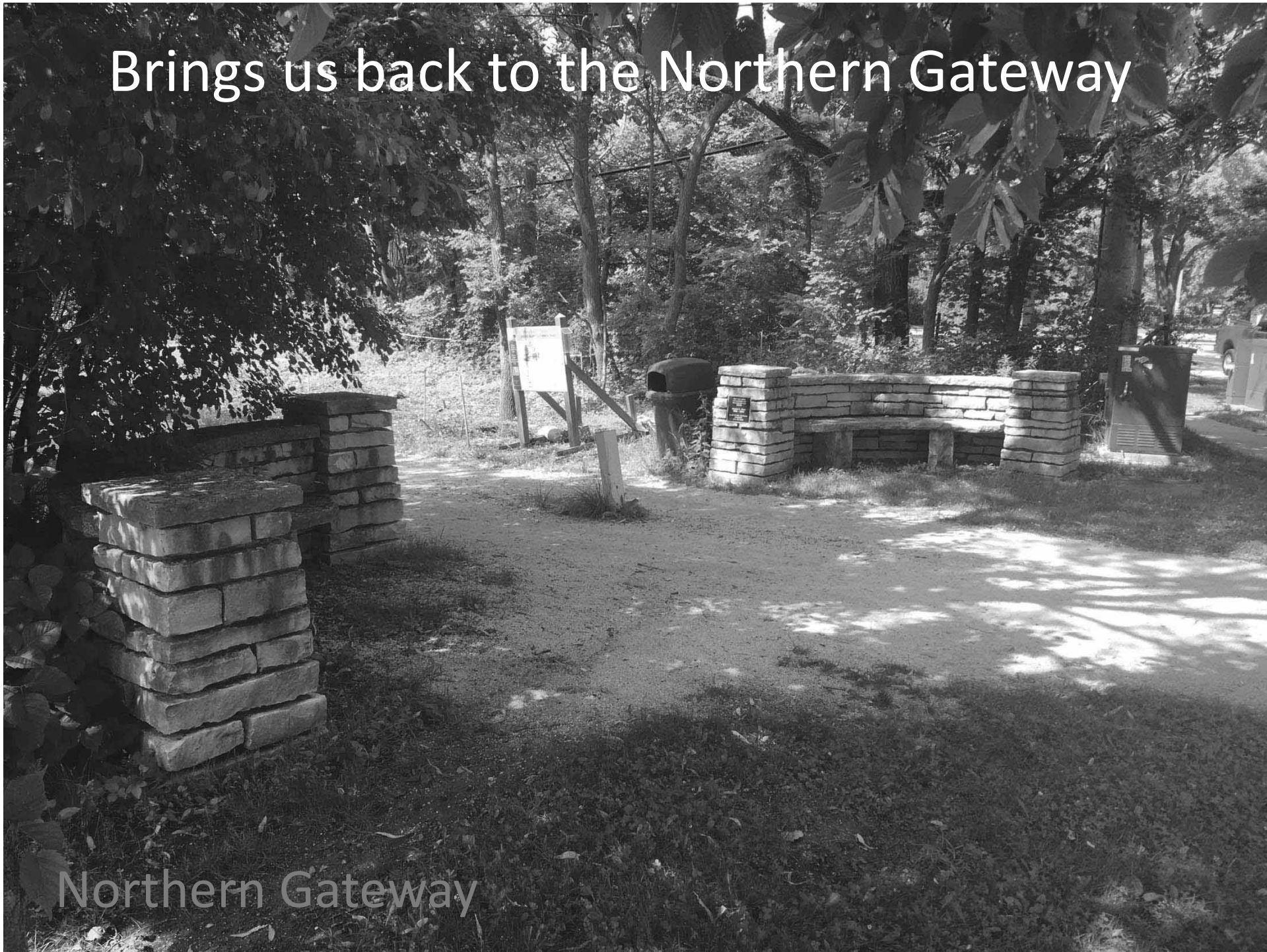
Altamanu  Inc.
landscape architecture + urban design + planning

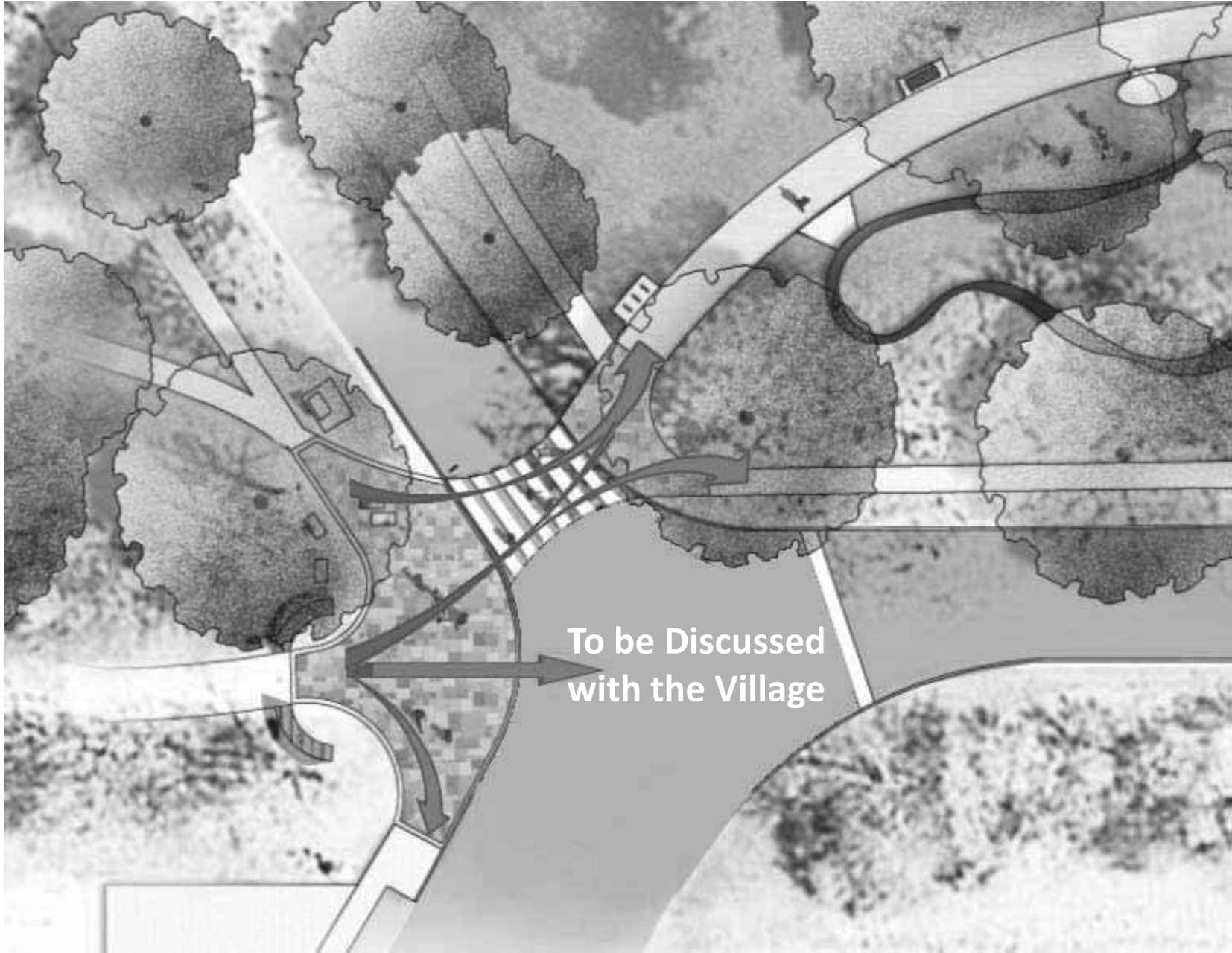

SMP GROUP


GLENCOE
PARK DISTRICT

Brings us back to the Northern Gateway

Northern Gateway





Proposed Plan Northern Gateway

Altamanu Inc.
landscape architecture + urban design + planning

SMP GROUP







Thank You

Altamanu.com