



**GLENCOE PARK DISTRICT
SPECIAL PROJECTS & FACILITIES COMMITTEE
Tuesday, September 11, 2018 - 7:00pm
Takiff Center**

Consistent with the requirements of the Illinois Compiled Statutes 5 ILCS 120/1 through 120/6 (Open Meetings Act), notices of this meeting were posted.
Meeting Location: Takiff Center, 999 Green Bay Road, Glencoe, IL 60022

AGENDA

- I. Call to Order
- II. Roll Call
- III. Matters from the Public
- IV. Design Review of Old Green Bay Linear Parks
- V. Public Comment on Designs presented for Old Green Bay Linear Parks
- VI. Capital Projects Discussion
- VII. Other Business
- VIII. Adjournment

The Glencoe Park District is subject to the requirements of the Americans with Disabilities Act of 1990. Individuals with disabilities who plan to attend this meeting and who require certain accommodations in order to allow them to observe and/or participate in this meeting, or who have questions regarding the accessibility of the meeting or facilities, are asked to contact the Park District at 847-835-3030.
Executive Director Email: lsheppard@glencoe parkdistrict.com

IV. Design Review of Old Green Bay Linear Parks

Attached:

- 1. Updated Designs**
- 2. Original Designs**

Glencoe Park District
September 11, 2018
Special Projects and Facilities Committee Meeting

NORTHERN GATEWAY

DISCOVERY WOODLAND

MEADOW - NATIVE PLANTING

PLAYGROUND (LINCOLN & CRESCENT)

SUNKEN GARDEN

SCULPTURE GARDEN

THE "QUAD"

DOWNTOWN GATEWAY

CROSSWALK, TYP

CHILDREN'S BIKE CIRCUIT

MULTICURSAL LABYRINTH

BIKE RACKS, TYP

FITNESS STATION, TYP

TRAIL, TYP

NATIVE WET MEADOW PLANTING

SEATING, TYP

PLAYGROUND

INTERACTIVE FOUNTAIN

PLAY TRAIN

SPORTS FIELD

NATIVE MEADOW PLANTING

BIKE CROSS, TYP

SWING BENCH, TYP

SPRING Ephemerals

EXISTING SCULPTURE

PROPOSED SCULPTURES IN THE LANDSCAPE

DESIRE LINE PATH (RE-DELIMITED ON-SITE)

VETERANS MEMORIAL PARK ENLARGED PLAZA W/ STONE WALL & EXISTING FLAG POLE

GATEWAY W/ UNIT PAVER PLAZA



GREEN BAY ROAD

GREEN BAY ROAD

OLD GREEN BAY ROAD

OLD GREEN BAY ROAD

OLD GREEN BAY ROAD

METRA STATION

PARK AVE



Old Green Bay Road Linear Parks Master Plan

Tuesday August 7th, 2018



Tonight

Proposal for a Long–Range Plan for the Linear Parks
Along Old Green Bay

Focused on a Recreational Multi-Use Trail that would
Connect to the Overall Network

Accommodate Variety of Users, All Ages & Abilities

Act as a Spine for Aesthetic and Athletic Park Experiences

Promote Exercise and the Health of the Community



Tonight Order of Presentation

General Information on Oak Trees & Habitat History

Signage and Elements that could be Placed Along Trail
not Necessarily in Any One Location

Scale and Complexity of the Project

Individual Sections of Plan

Long-Term Plan : Menu of Options

Many Specific to Site others Could Be Relocated



Delighted to be Here!!!



More Delighted To Have Such Amazing Oaks



CHICAGO
REGION
TREES
INITIATIVE

Our Trees.
Our Communities.
Our Future.

OAK Trees NEED OUR HELP

Learn What You Can Do



1800s Oak Forests accounted for 60 % of the state's trees
Today, of what remains only 5 percent are Oaks

oak trees provide a habitat for over 500 species of butterfly and moth.
(Morton Arboretum)



HERE'S HOW YOU CAN HELP

- ▶ Clear out weedy trees and plants to let the sun shine in for oaks.
- ▶ Remove non-native invasive plant species.
- ▶ Plant oak trees in sunny areas on your property.
- ▶ Create a healthy home for trees, plants, birds, and other wildlife.
- ▶ Preserve and care for your oak trees and oak woodlands.
- ▶ Volunteer to plant and care for oak trees.

OAK REGENERATION RESOURCES

For more information:

OAK ECOSYSTEMS RECOVERY PLAN
(chicagowilderness.org)

CHICAGO REGION TREES INITIATIVE
(chicagorti.org)


THE MORTON ARBORETUM
(mortonarb.org)

EDDMAPS MIDWEST
(eddmaps.org)

Contact us:

 crti@mortonarb.org

 chicagorti.org

 630-719-5646

 @ChicagoRTI

 ChicagoRTI



Our Trees.
Our Communities.
Our Future.

The Morton
Arboretum

THE
CHAMPION
of TREES

4550_0311_PNG © 2017 The Morton Arboretum



OAKS NEED YOUR HELP!

HOW HOMEOWNERS, LANDOWNERS,
AND INDIVIDUALS CAN CREATE A
BETTER FUTURE FOR OAK TREES

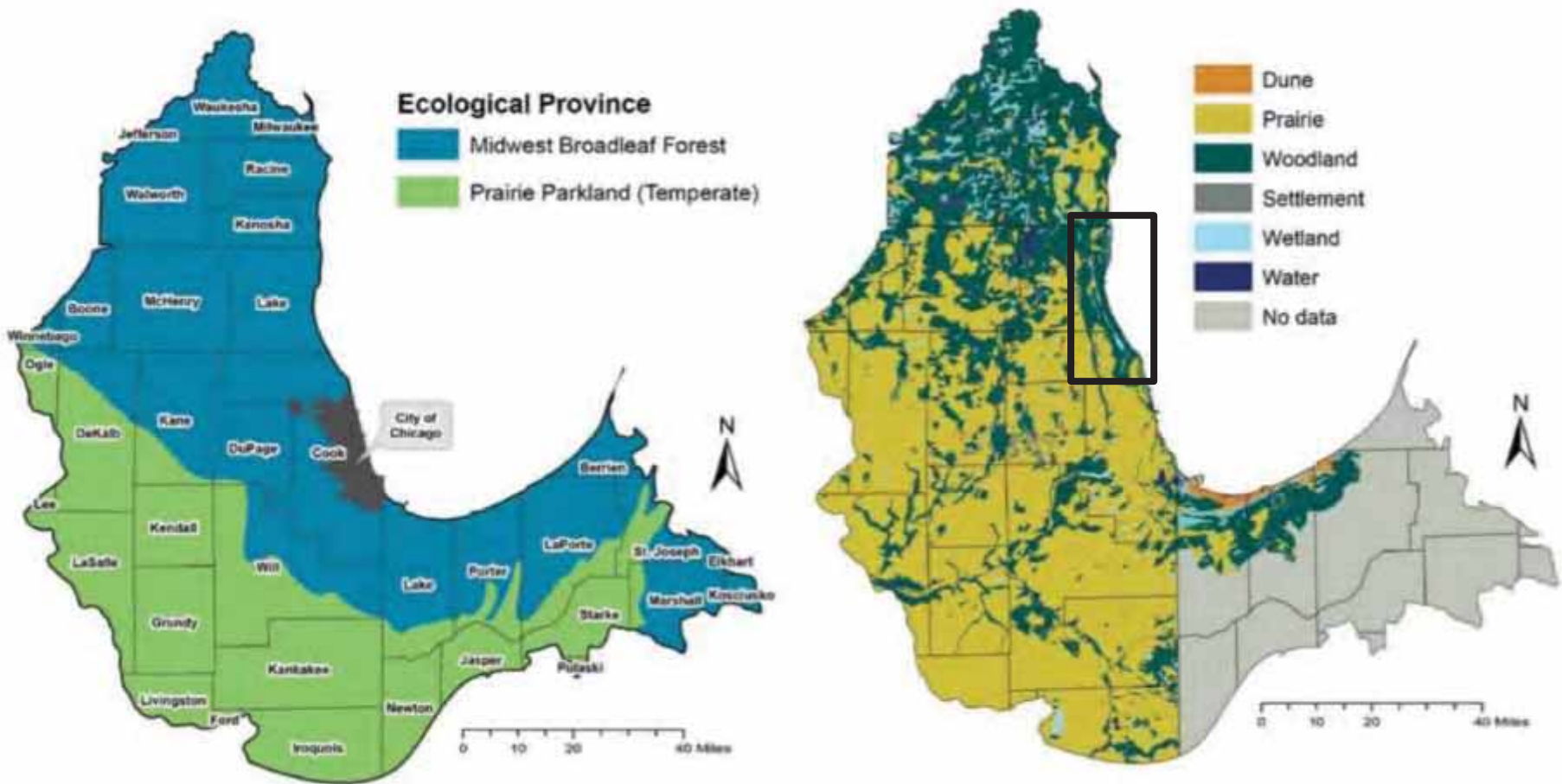


CHICAGO
REGION
TREES
INITIATIVE

Our Trees.
Our Communities.
Our Future.

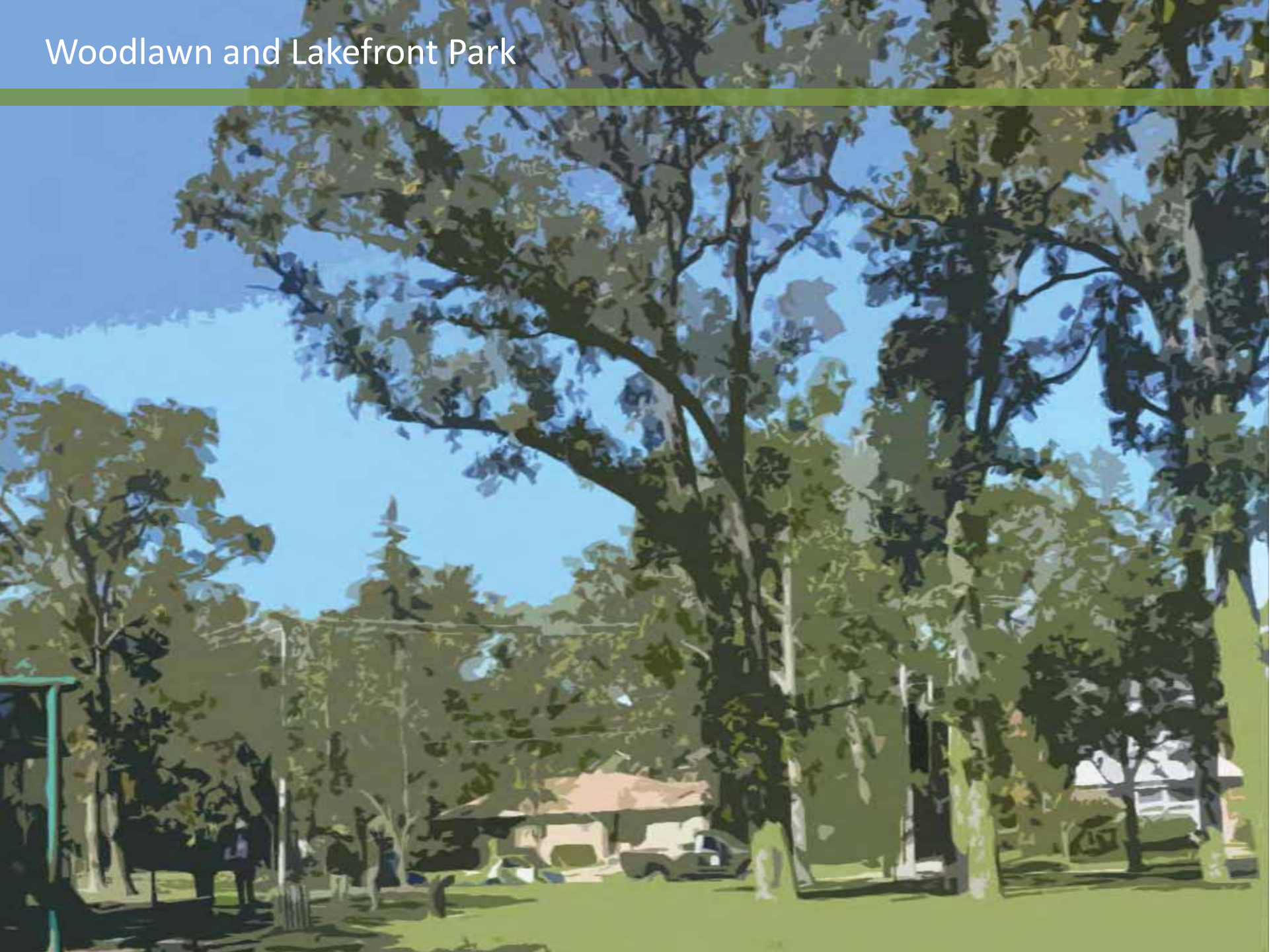


There were high concentrations of Oak Woodland and Savanna in this Area



Issues: Loss of habitat, soil alteration, fire regimes, pollution, extreme weather events, invasive plants, insect pests, and diseases

Woodlawn and Lakefront Park



Many Oaks along Green Bay

Construction Near Oaks

Be careful when disturbing

Black oak (*Quercus velutina*)

Buckeyes (*Aesculus* spp)

Red oaks (*Quercus rubra*)

Scarlet oaks (*Quercus coccinea*)

Tolerates some disturbance

Hickories (*Carya* spp.)

Swamp white oak (*Quercus bicolor*)

Easygoing about disturbance

White oak (*Quercus alba*, Zones 5–9)

Add Directional & Informational Signage along Trail

Trail Marker Trees

Trail marker trees were created by Native Americans and early pioneers as forms of local navigation. While the Native Americans had a widespread trail system in place, the trail marker trees served as guideposts that led to and from specific places of interest, much like the interstate signage system does today. Such places included locations of fresh water, medicinal plants, hunting implements, tools, adornments, shoes, ceremonial sites, burial grounds and areas of storage.

The trees were shaped as young saplings, usually from hardwood species, to provide suppleness when young and rigidity and strength with age. The saplings were tied to a stake in the ground with rawhide or root over a yoke and weighted with a rock in a leather pouch, leaving the trunk of the tree completely horizontal.

Soon a new branch would sprout skyward from the tree trunk; this would become the new upright trunk. The remaining upright portion of the tree extending past the upright trunk would be removed after approximately ten years. The removal would leave a distinctive knot at the bend of the tree that would indicate it had been



shaped by the hand of man, not by nature. Single trunk trail trees usually indicated directions; double trunk trail trees indicated locations.



Photo by Henry Smith (right) and Alvord, *Landscape from 1901*

Glencoe and the surrounding area was once home to many trail marker trees. The Friends of the Green Bay Trail, Village of Glencoe, Glencoe Historical Society and Glencoe Park District collaborated on this project in an effort to recreate this piece of local history.

Photos provided by Dennis Downes, Great Lakes Trail Marker Tree Society and Glencoe Historical Society.

The North Shore Electric Line

Behind you are remnants of the Chicago, North Shore and Milwaukee Railroad ("North Shore Line"). The square cement pillars hold the Harbor Street platform. The raised bases supported the overhead electric power lines. Service on this interurban line began in 1899. Express trains along the Skokie Valley route reached 60 mph offering service from Chicago to Milwaukee in 90 minutes.

Mr. Alfred C. Frost, an investor and president of the original Chicago and Milwaukee Electric Railroad Company, wanted to create a destination to increase ridership. Ravinia, originally an amusement park, was founded in 1904 by A.C. Frost & Company. Metra (Union Pacific Railroad) provides a stop at Ravinia during the concert season.

Glencoe had stops at Scott, Woodlawn, Harbor, South, Hawthorn, Park, Lincoln and Maple Hill/Green Bay. New Trier students and commuters used the train daily.

North Shore Electric Line service ended in 1955 with the completion of the Edens Expressway. The Village of Glencoe acquired the right-of-way in 1964. Through the combined effort of North Shore residents, the old railroad became the Green Bay Trail you enjoy today.



Photo of Great North Shore near Maple Hill Road, c. 1900
Photo by B.W. Gilson - Bruce R. Reed collection

For more information contact the Glencoe Historical Society.

The Village of Glencoe began in the 1830s with an inn for stagecoaches at what is now South Avenue

Altamano Inc.
landscape architecture • urban design • planning

SMP GROUP



Add “Play Together” Equipment Pods along the Trail

FRIENDSHIP SWING



OUTDOOR CARDIO WALKER



SPINNER



Some of the Potential Equipment

Add "Play Together" Equipment Pods along the Trail

CHEST BACK PRESS



AB CRUNCH/LEG LIFT DB



PULL UP DIG CYCLER



SQUAT PRESS



ASSISTED ROW



CARDIO STEPPER

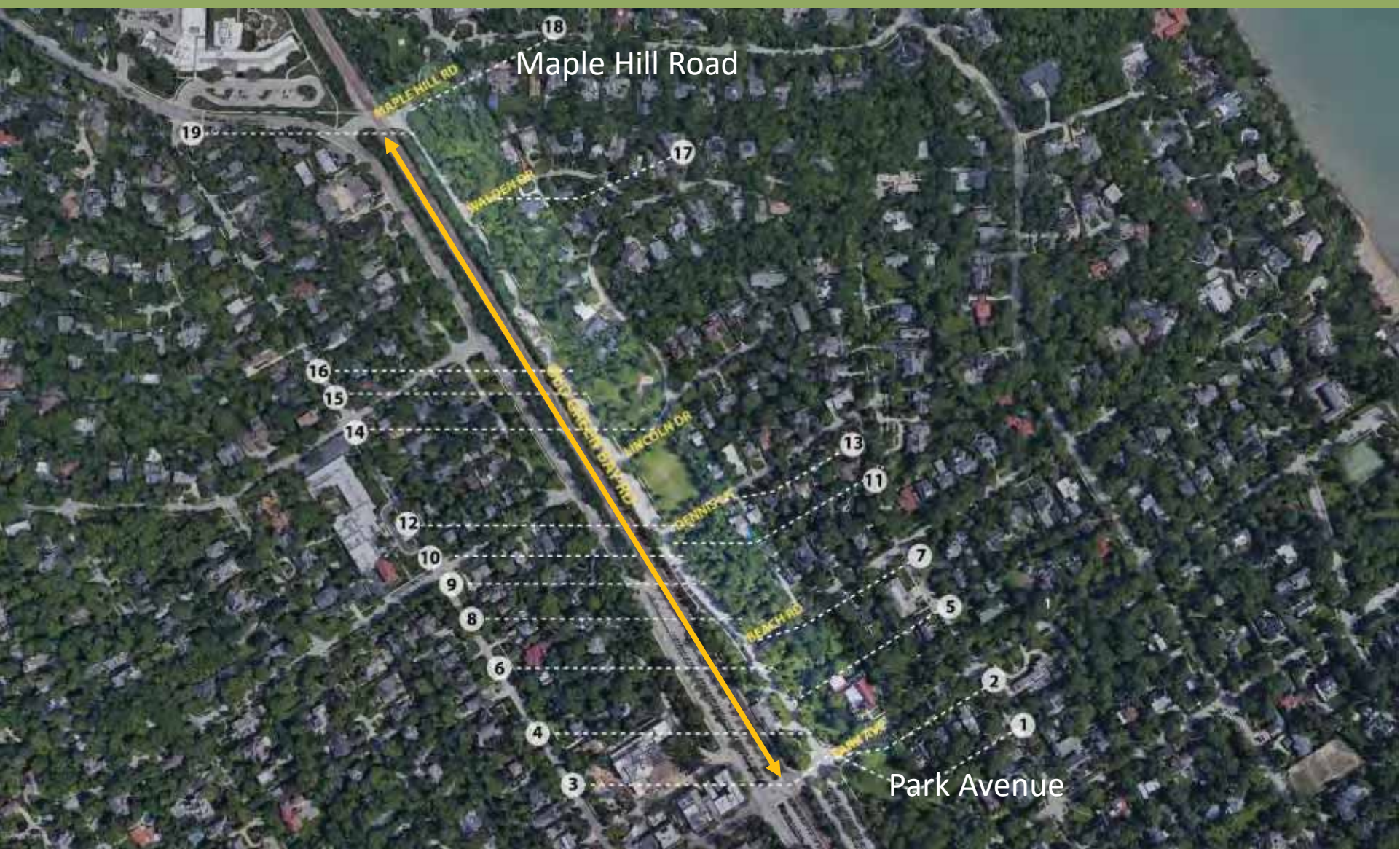


ELLIPTICAL

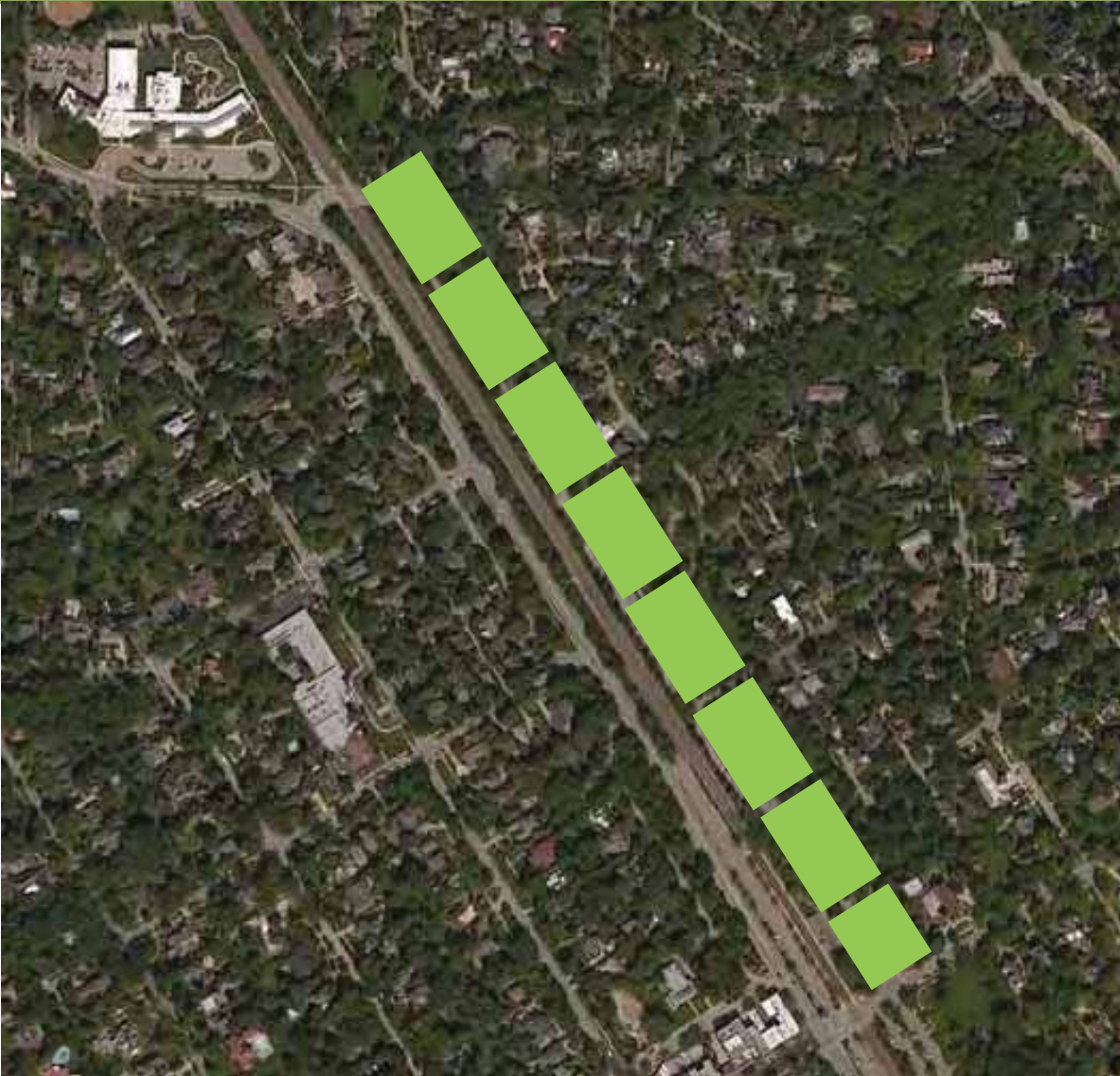


Some of the Potential Equipment

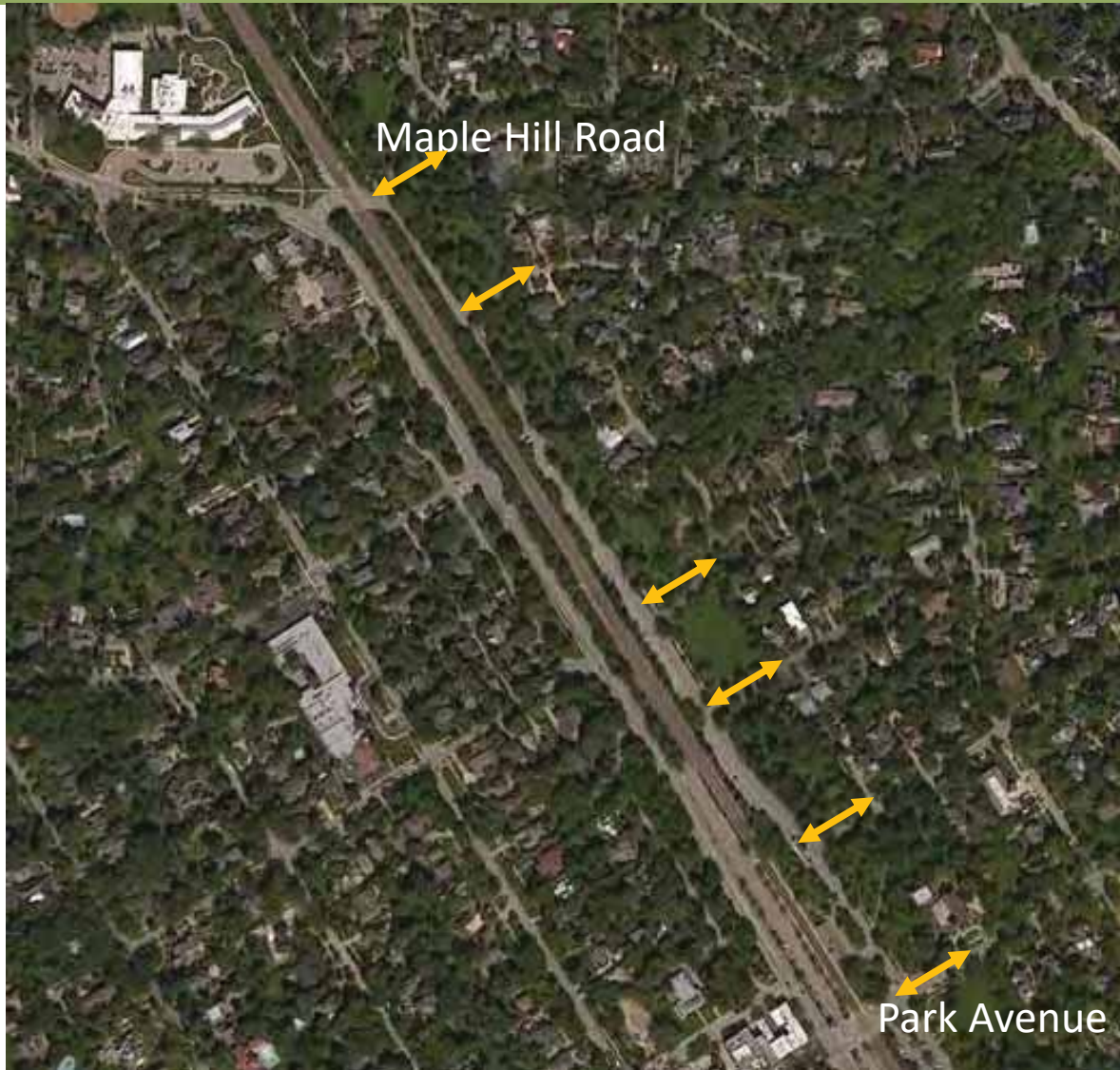
Project Scale .53 Miles Approx. 2,800 Feet



More Than Seven and a Half Football Fields



Five Separate Parks and Six Road Crossings



What's Involved?

5 Separate Parks, each with its own distinct character, viewsheds, settings, and spatial relationships.

Six road crossings, a playground, Veterans Memorial, various gardens, historic artifacts and an urban forest with many mature (priceless) trees.

Issues within each park vary but drainage, current-use, potential-use, and relationship to residences are some of the most important.

Ravines and Site



Enhanced aerial shows ravines in darker colors

Drainage Blocked by Roads and R.R.





Existing Conditions Analysis

Major Arterial Nodes



Northern Gateway

Downtown Gateway

Existing Conditions Analysis

Effect of Rail Lines



Northern Gateway

Downtown Gateway

Existing Conditions Analysis

Only Crossings at Maple Hill and Park Avenue



Northern Gateway

Downtown Gateway

Existing Conditions Analysis



Connections to Sheridan Road

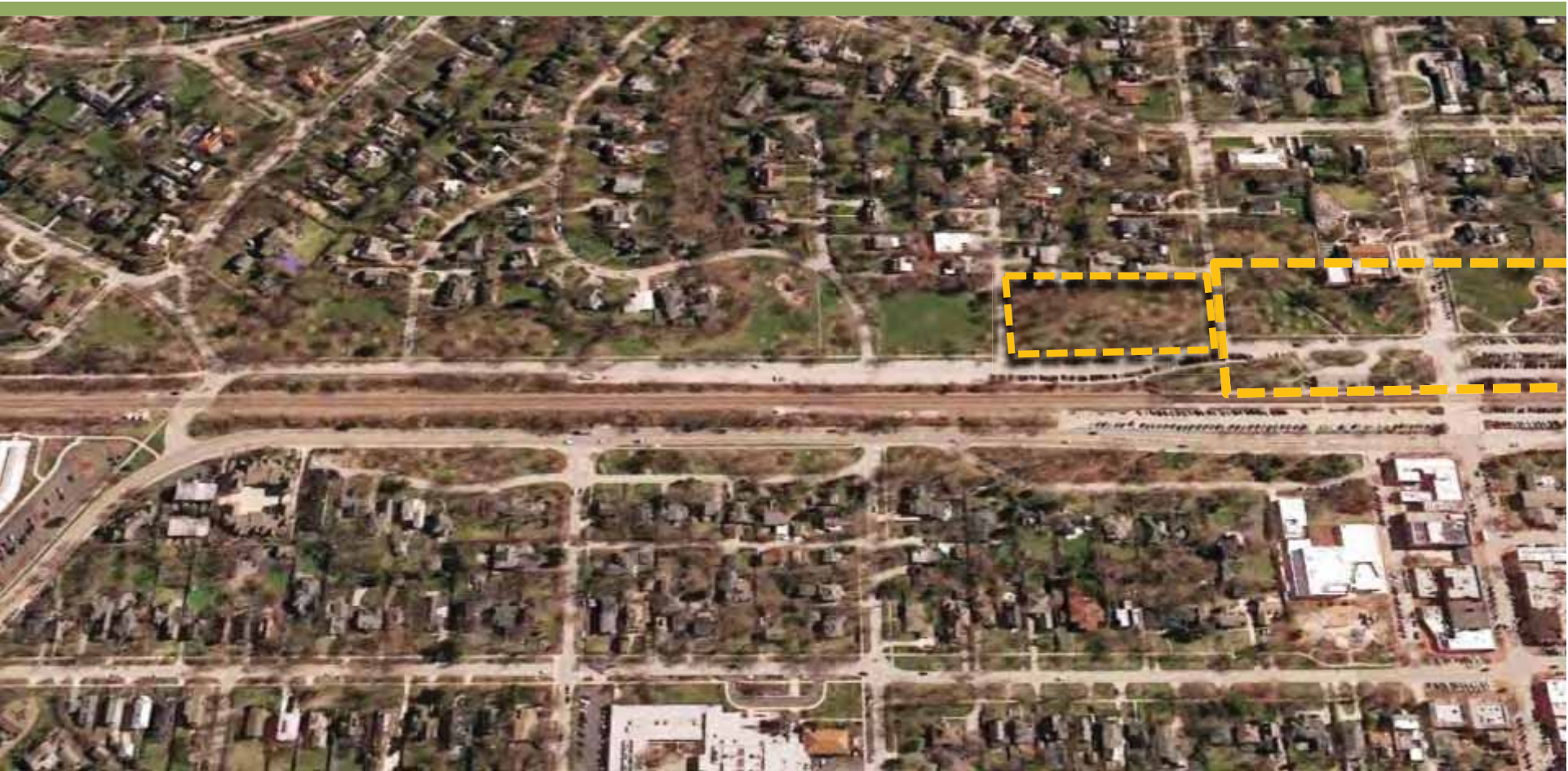


Existing Conditions Analysis



Gateway
Veterans Memorial
Display Gardens
Oaks and Elms
Liza's Gazebo

Existing Conditions Analysis



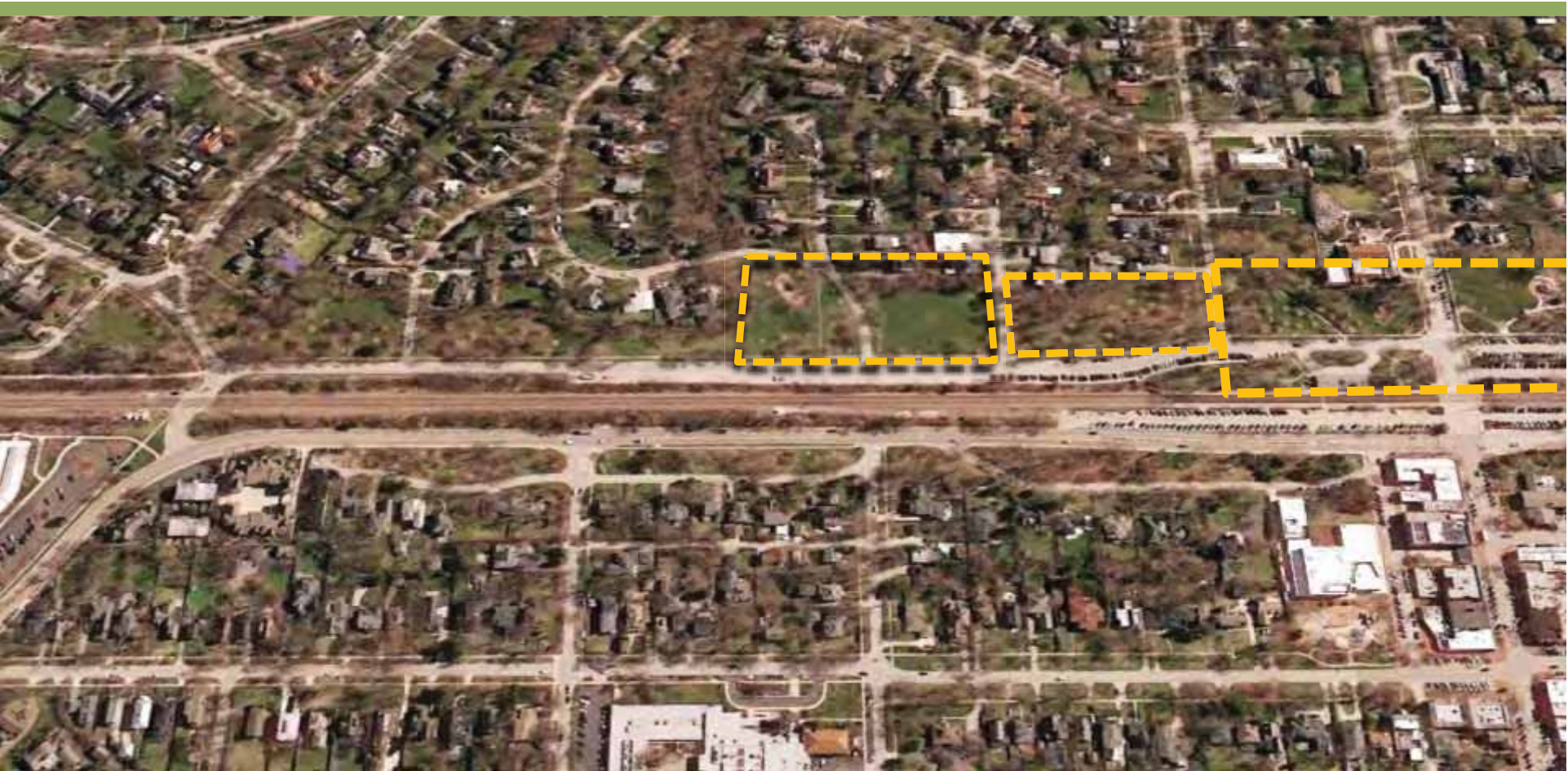
Breakwater
Sculpture
Oaks and Elms

Gateway
Veterans Memorial
Display Gardens
Arboretum
Liza's Gazebo

Existing Conditions Analysis



Lincoln & Crescent Sculpture Garden The Quad



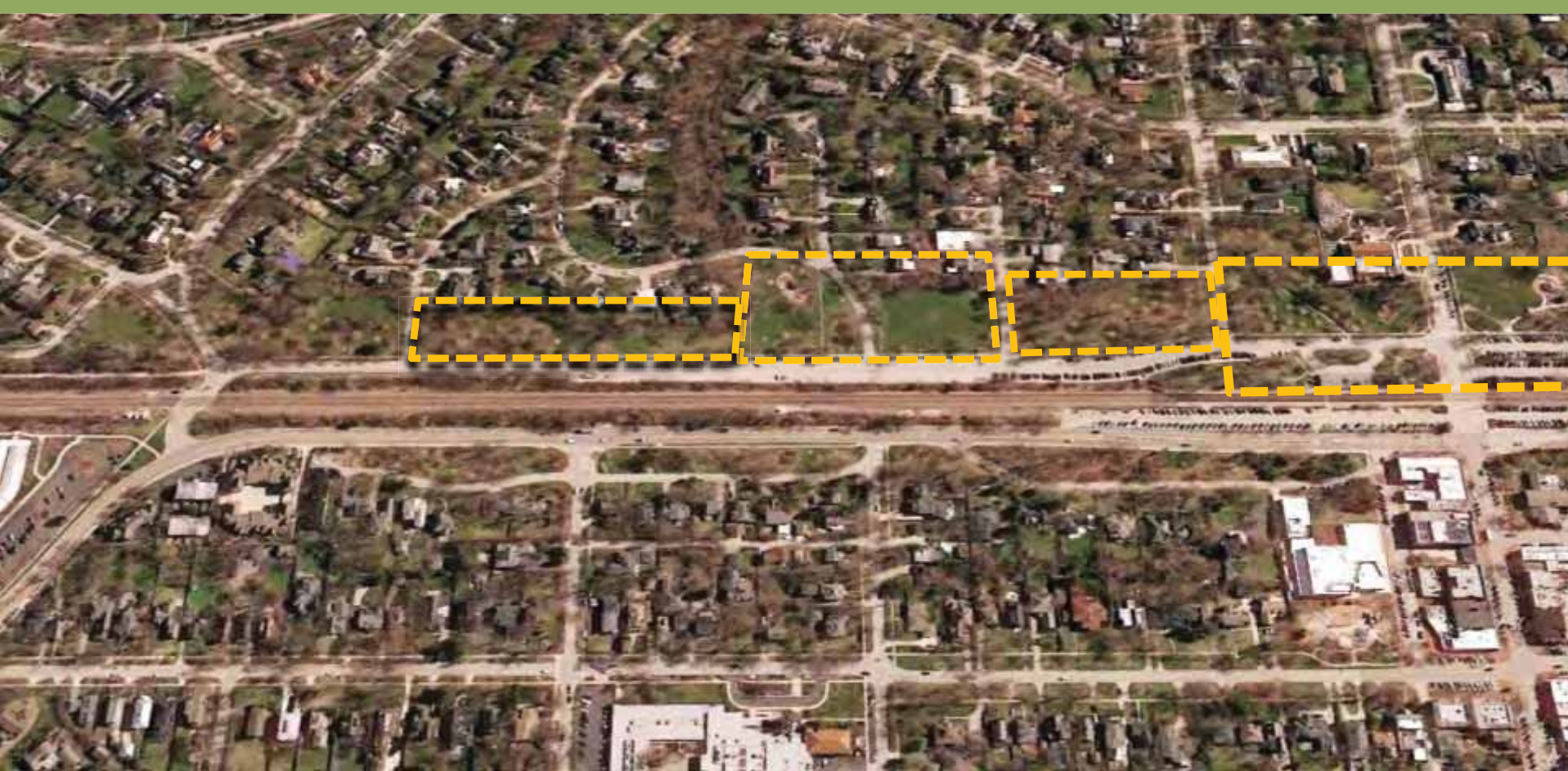
Playground
Topography
Head of Ravine
Open/Sunken Fields

Breakwater
Sculpture
Oaks and Elms

Gateway
Veterans Memorial
Display Gardens
Arboretum
Liza's Gazebo

Existing Conditions Analysis





Wet Habitat
 Volunteer Growth
 Open Meadow

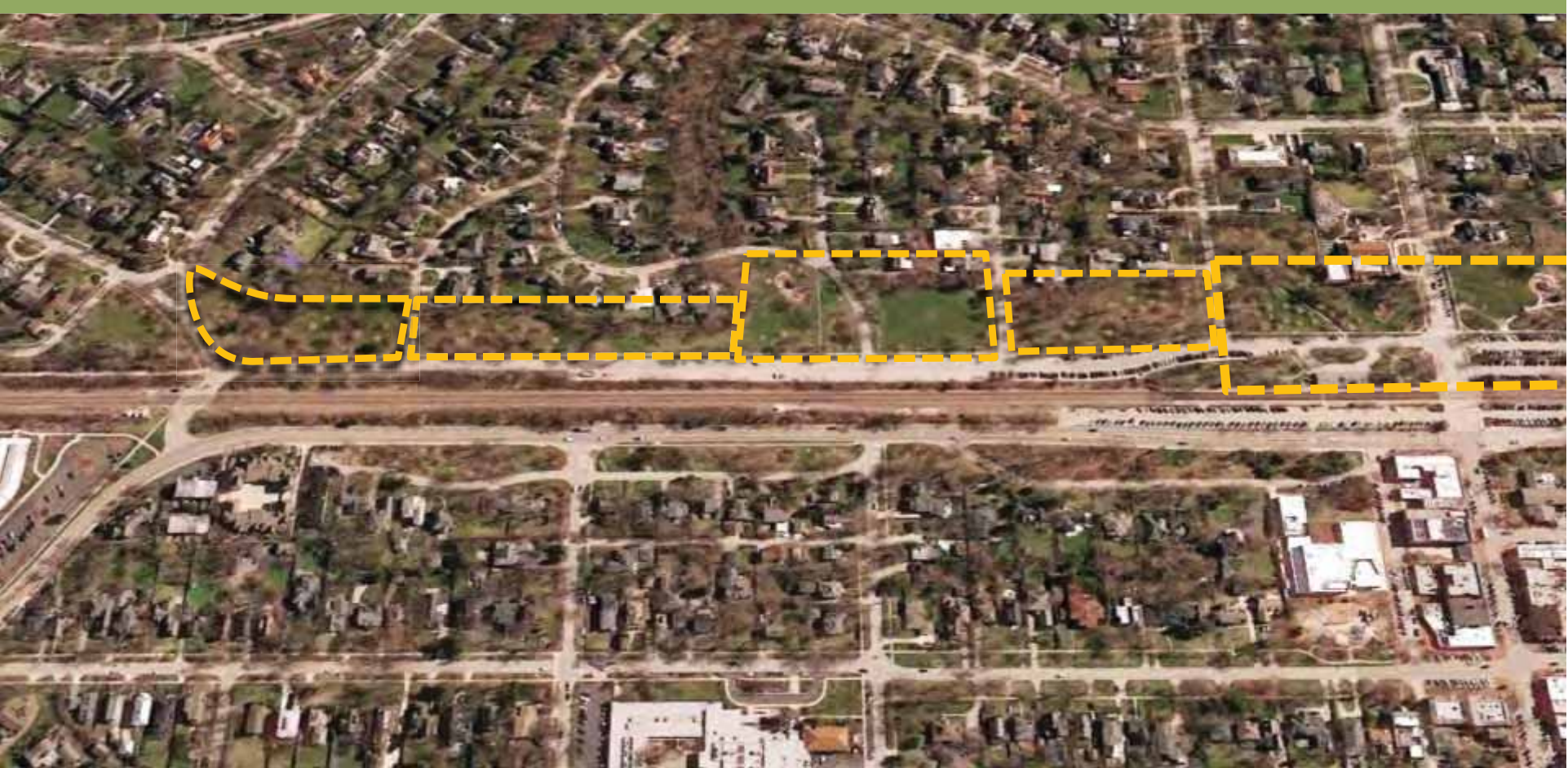
Playground
 Topography
 Head of Ravine
 Open/Sunken Fields

Breakwater
 Sculpture
 Oaks and Elms

Gateway
 Veterans Memorial
 Display Gardens
 Arboretum
 Liza's Gazebo

Existing Conditions Analysis





Woodland w/
Wet Areas

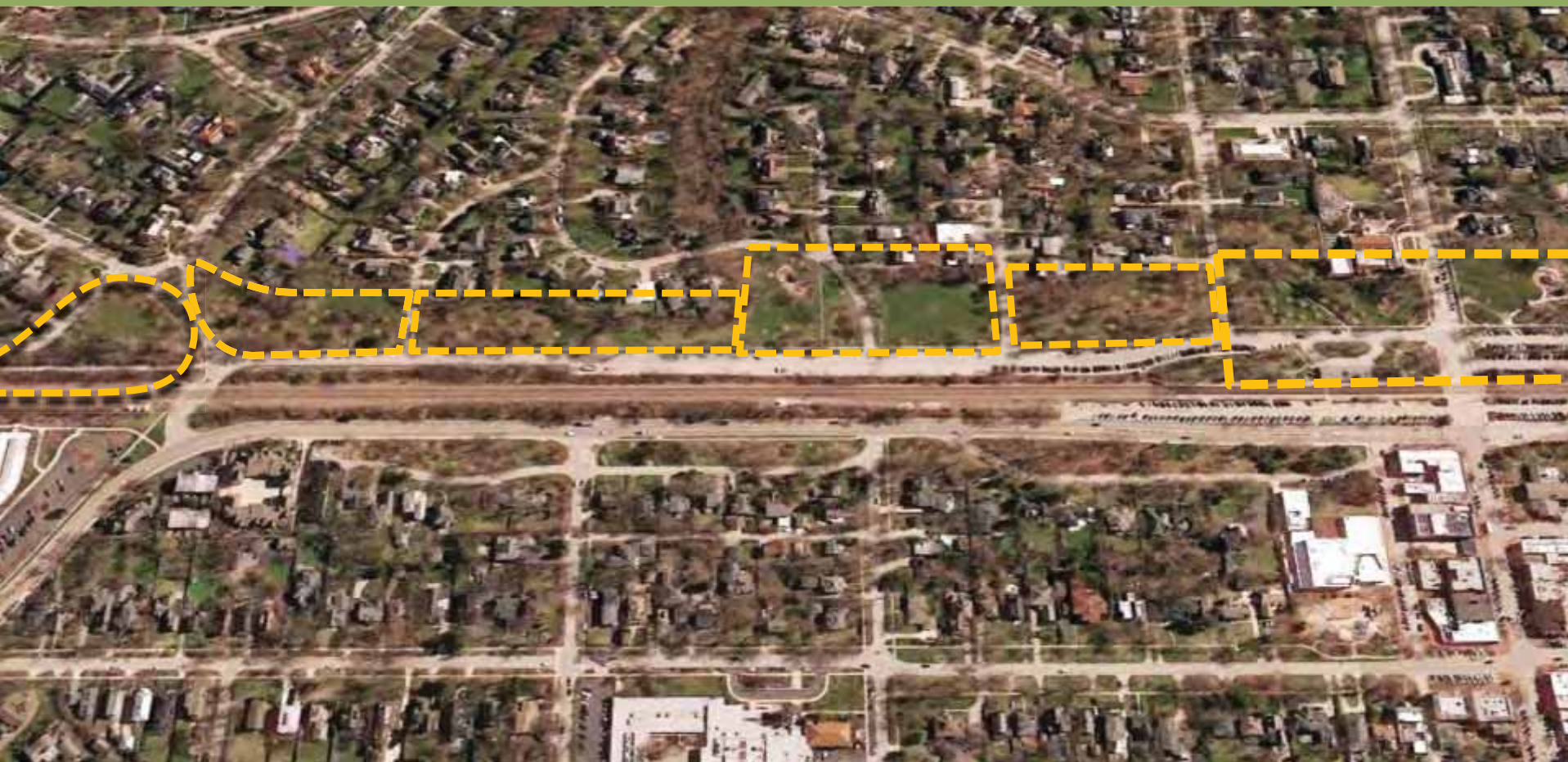
Wet Habitat
Volunteer Growth
Open Meadow

Playground
Topography
Head of Ravine
Open/Sunken Fields

Breakwater
Sculpture
Oaks and Elms

Gateway
Veterans Memorial
Display Gardens
Arboretum
Liza's Gazebo

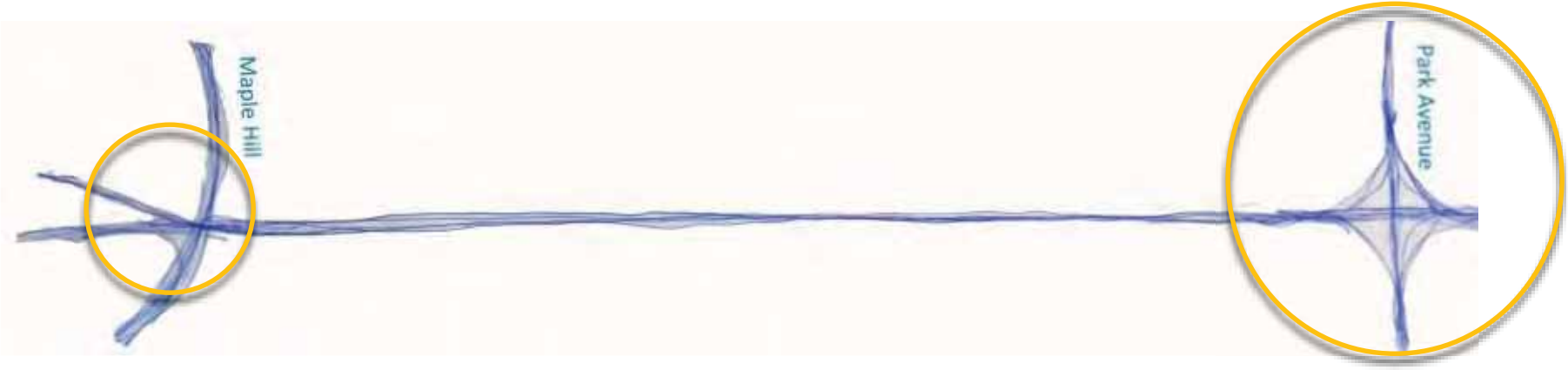
Existing Conditions Analysis



- Open Field
- Woodland w/ Wet Areas
- Wet Habitat
- Playground
- Breakwater
- Gateway
- Volunteer Growth
- Stone Walls
- Volunteer Growth
- Topography
- Sculpture
- Veterans Memorial
- Takiff Center
- Open Meadow
- Head of Ravine
- Oaks and Elms
- Display Gardens
- Open/Sunken Fields
- Arboretum
- Liza's Gazebo

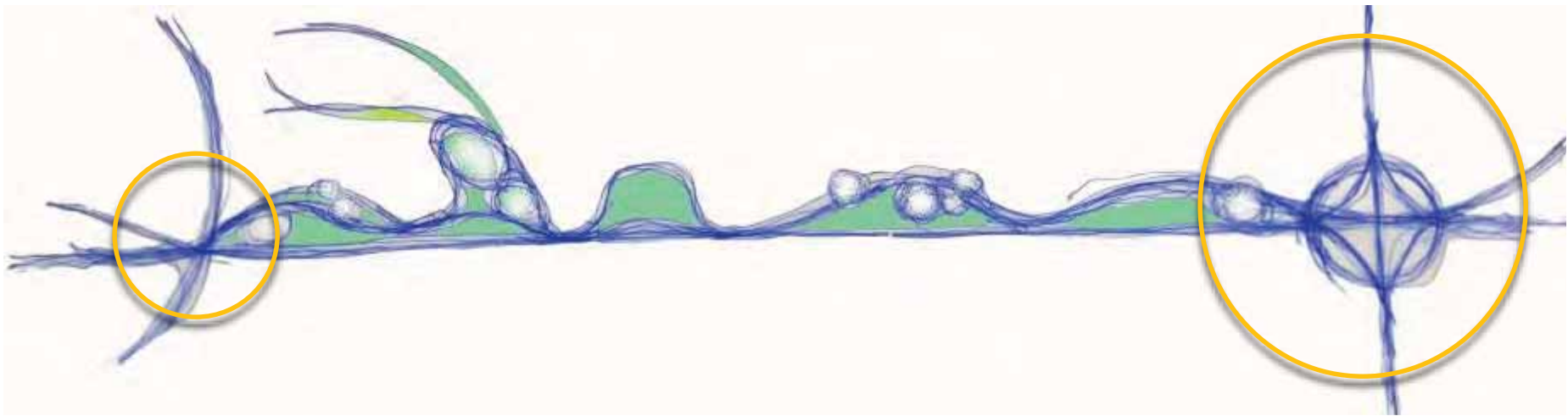
Existing Conditions Analysis

Existing Use of Trail, Most on Road or on Straight Sidewalk



Existing Conditions Analysis

Proposed : A Journey Through the Parks



You will be able to use the road or meander through the Parks and Visit Different Environments

Existing Conditions Analysis

Altamanu Inc.
landscape architecture • urban design • planning

SMP GROUP





“The Quad”

Altamanu Inc. 
landscape architecture • urban design • planning


SMP GROUP
landscape architecture


GLENCOE
PARK DISTRICT

Existing Desire Lines (Like a University Quad)



Desire Lines lead to the Station and Downtown

“The Quad”



Northern Desire Line begins on Beach Road

Altamanu Inc.
landscape architecture • urban design • planning

SMP GROUP

GLENCOE
PARK DISTRICT



Passes by Ancient Oaks

Altamanu Inc.
landscape architecture • urban design • planning

SMP GROUP

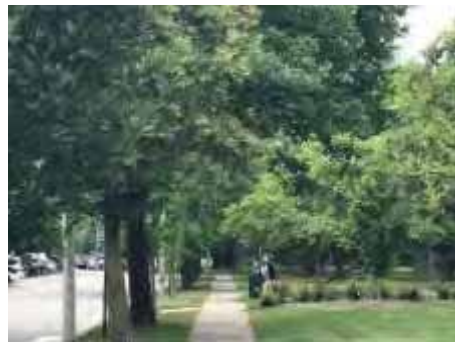
GLENCOE
PARK DISTRICT



Desire Line leads to a Curb Cut & Diagonal Crossing (Issue for the Village)

Altamanu Inc.
landscape architecture • urban design • planning





People Cross on a Diagonal



Practical Recreational : Basketball



“The Quad”

Altamanu Inc.
landscape architecture • urban design • planning

SMP GROUP

GLENCOE
PARK DISTRICT

However there is a Sacred Element



Entry

However there is a Sacred Element



Entry, Veterans Memorial,

However there is a Sacred Element



Entry, Veterans Memorial, Church,

However there is a Sacred Element



Entry, Veterans Memorial, Church, Liza's Gazebo,

However there is a Sacred Element



Entry, Veterans Memorial, Church, Liza's Gazebo, Gardens,

However there is a Sacred Element



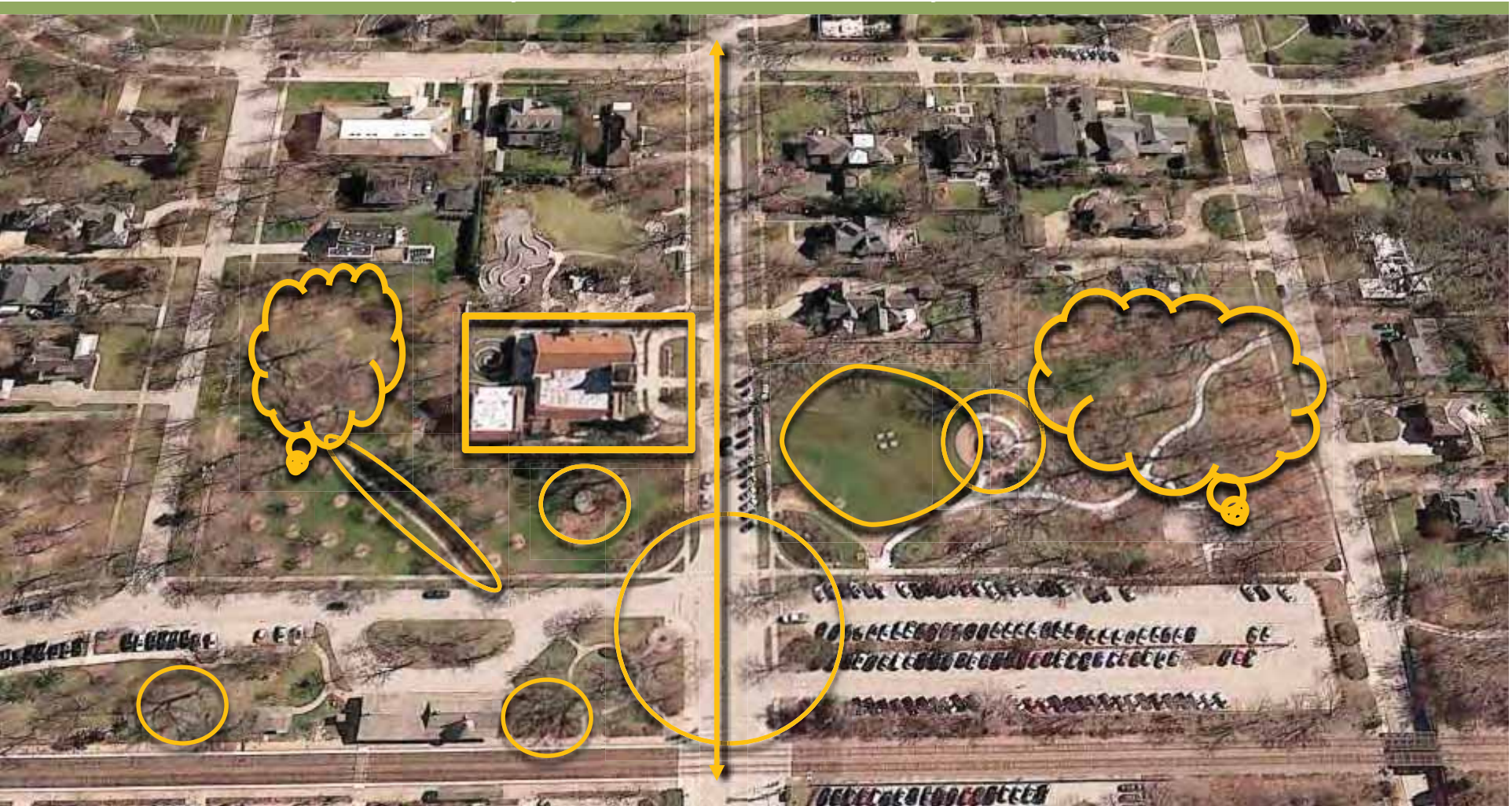
Entry, Veterans Memorial, Church, Liza's Gazebo, Gardens,
Community Gathering,

However there is a Sacred Element



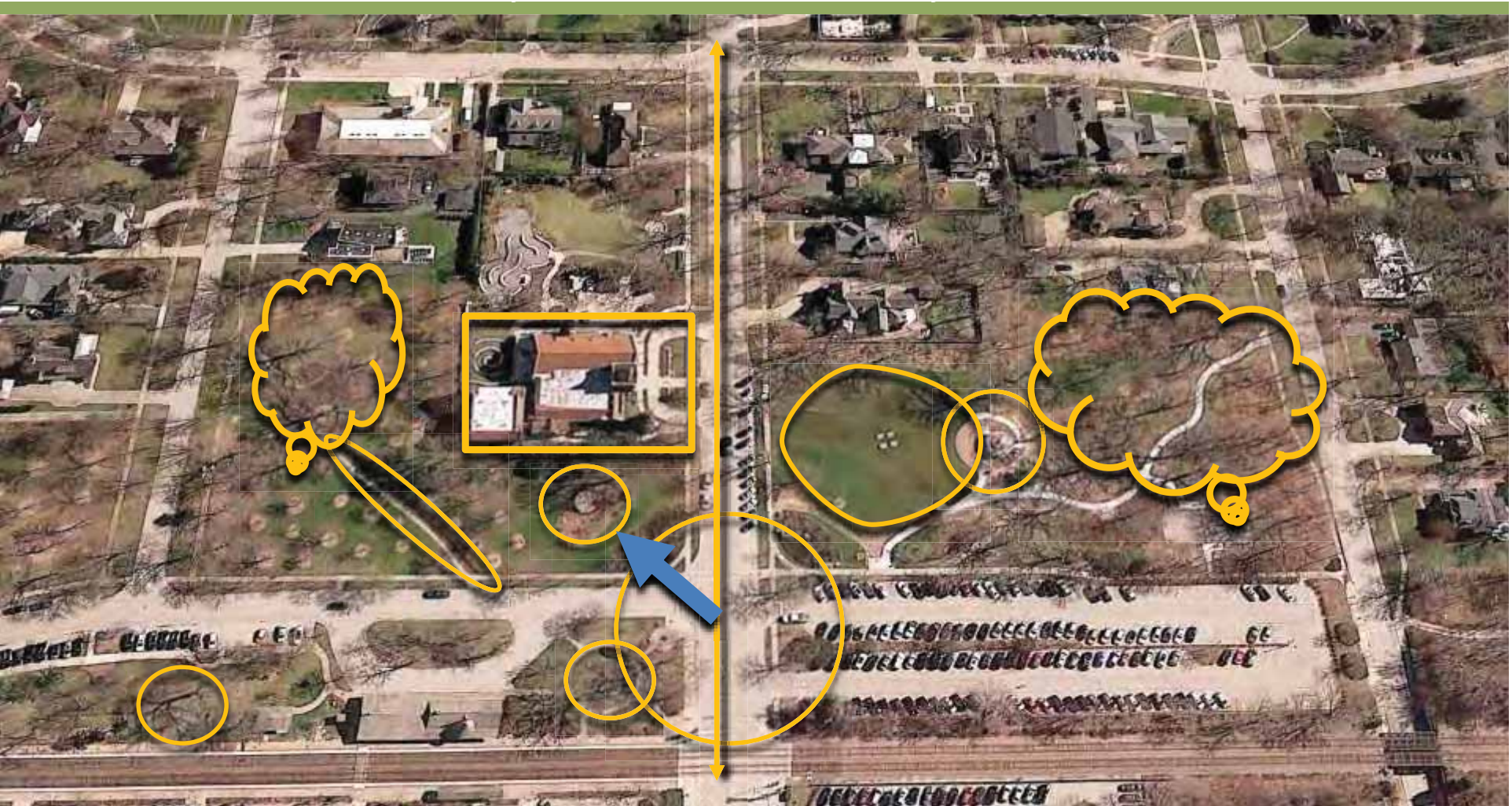
Entry, Veterans Memorial, Church, Liza's Gazebo, Gardens,
Community Gathering, Link to the Lake/Downtown

However there is a Sacred Element



And Superb Oaks and other Mature Trees

Scope is From Park Avenue North



Start with Entry and Veterans Memorial



Gateway Planting on Park Avenue

Altamanu Inc.
landscape architecture • urban design • planning

SMP GROUP



Attractive Planting and Stone Walls but Domestic in Scale



Gateway Planting on Park Avenue

Altamanu Inc.
landscape architecture • urban design • planning

SMP GROUP





Veterans Memorial

Stone Walls and Flower Display

Existing Stone Walls and Veterans Memorial





Existing Stone Walls and Veterans Memorial

Altamanu Inc.
landscape architecture • urban design • planning





Attractive Up Close

Altamanu Inc.
landscape architecture • urban design • planning





Veterans Memorial Hidden and No ADA Access

Altamanu Inc.
landscape architecture • urban design • planning

SMP GROUP



Sacred Element



Veterans Memorial Hidden by Planting



Existing



Proposed Entry and Veterans Memorial

Expose Stonework, Keep Some Area for Flower Display, Provide Views to Memorial, Complete Mound, Add Walls

Altamanu Inc.
landscape architecture • urban design • planning

SMP GROUP

GLENCOE
PARK DISTRICT



Planting Hides Memorial

Altamanu Inc.
landscape architecture • urban design • planning

SMP GROUP

GLENCOE
PARK DISTRICT



Existing View to Memorial from Green Bay





Proposed View of Expanded Memorial from Old Green Bay

Altamanu Inc.
landscape architecture • urban design • planning

SMP GROUP

GLENCOE
PARK DISTRICT



Proposed Access Point for ADA Ramp

Altamanu Inc.
landscape architecture • urban design • planning

SMP GROUP

GLENCOE
PARK DISTRICT

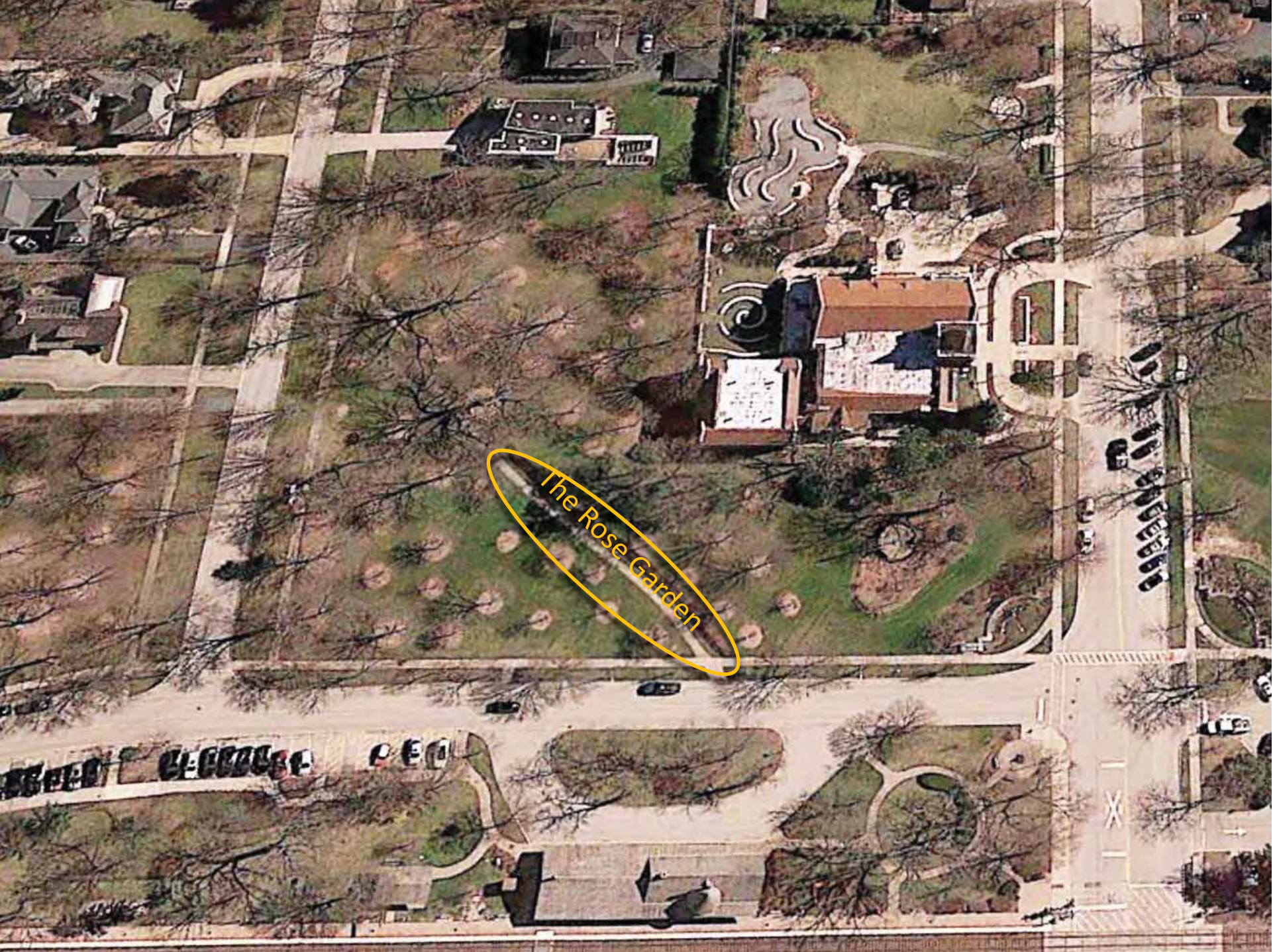


Existing Veterans Memorial



Proposed: Accessible, Dignified





The Rose Garden



High Maintenance & Deer enjoy the Flowers





The Proposed Plan for the Quad

Altamanu Inc.
landscape architecture • urban design • planning

SMP GROUP

GLENCOE
PARK DISTRICT

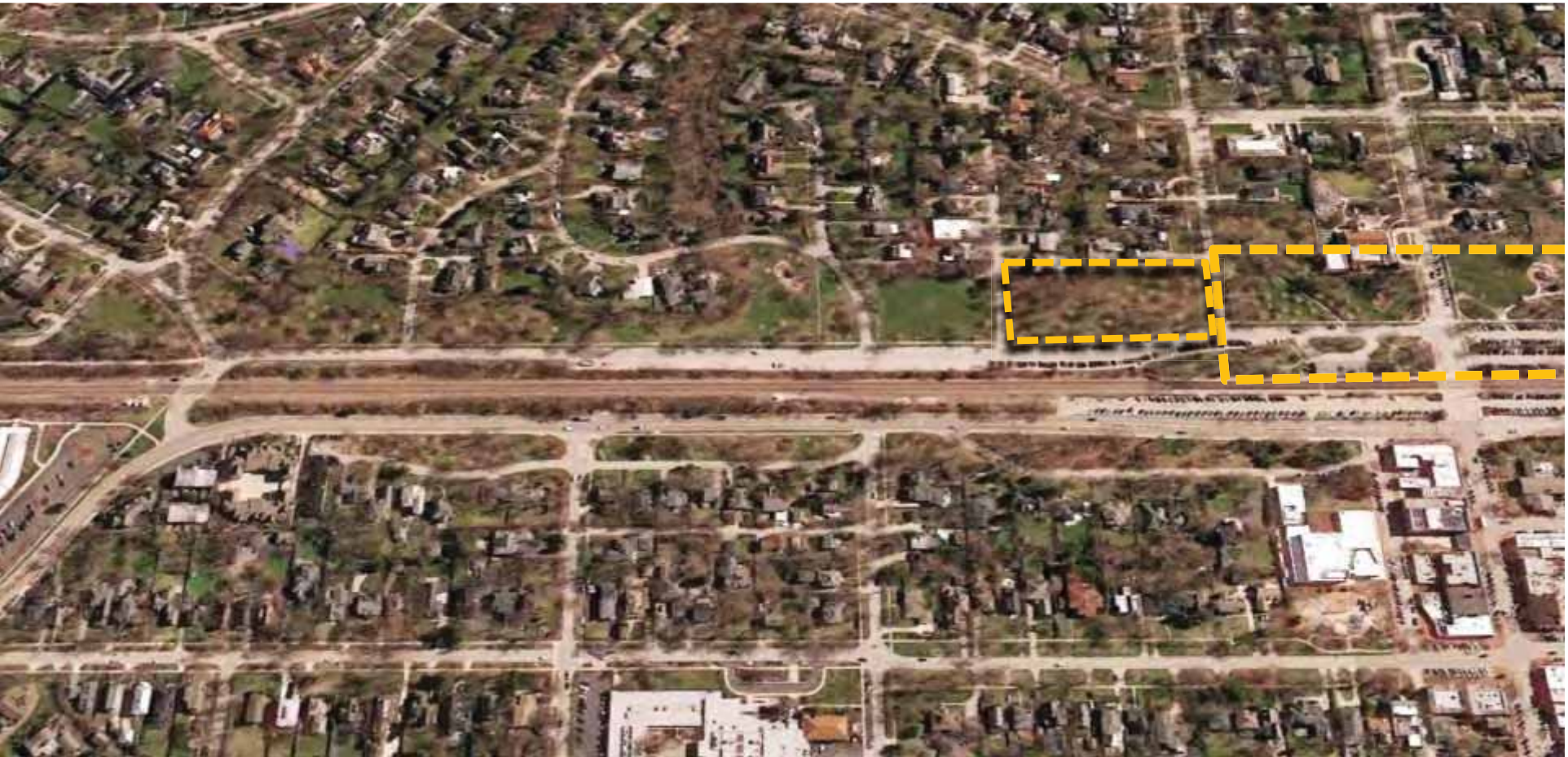


The Proposed Plan for the Quad

Altamanu Inc.
landscape architecture • urban design • planning

SMP GROUP

GLENCOE
PARK DISTRICT



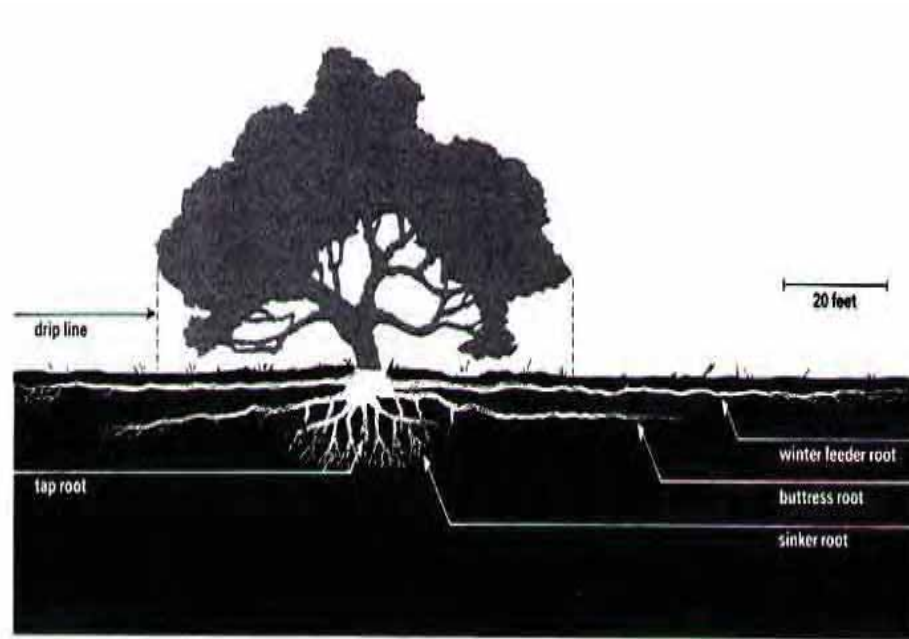
Breakwater
Sculpture
Oaks & Elms

Gateway
Veterans Memorial
Display Gardens
Oaks Set Back
Band Shell

Existing Conditions Analysis





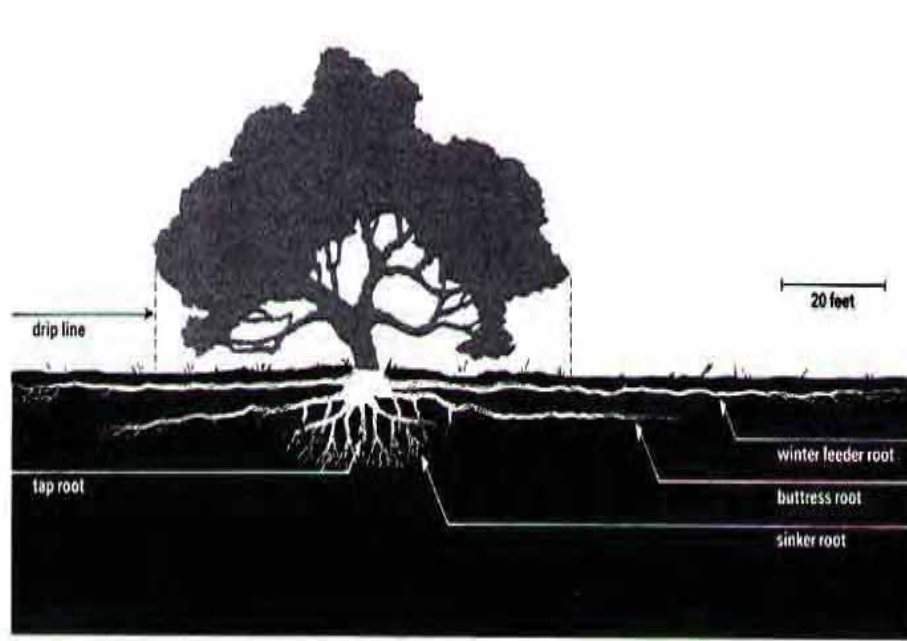


Most (90 percent) of the root biomass is located in the upper two feet of the soil profile (Shields and Gray 1994; UC extension pamphlet).

Sculpture Garden



Image on the left is misleading



Sculpture Garden



Do not wish to Damage
Mature Oaks and Elms



Proposal 1: Swing Path East To Open Space and Younger Trees

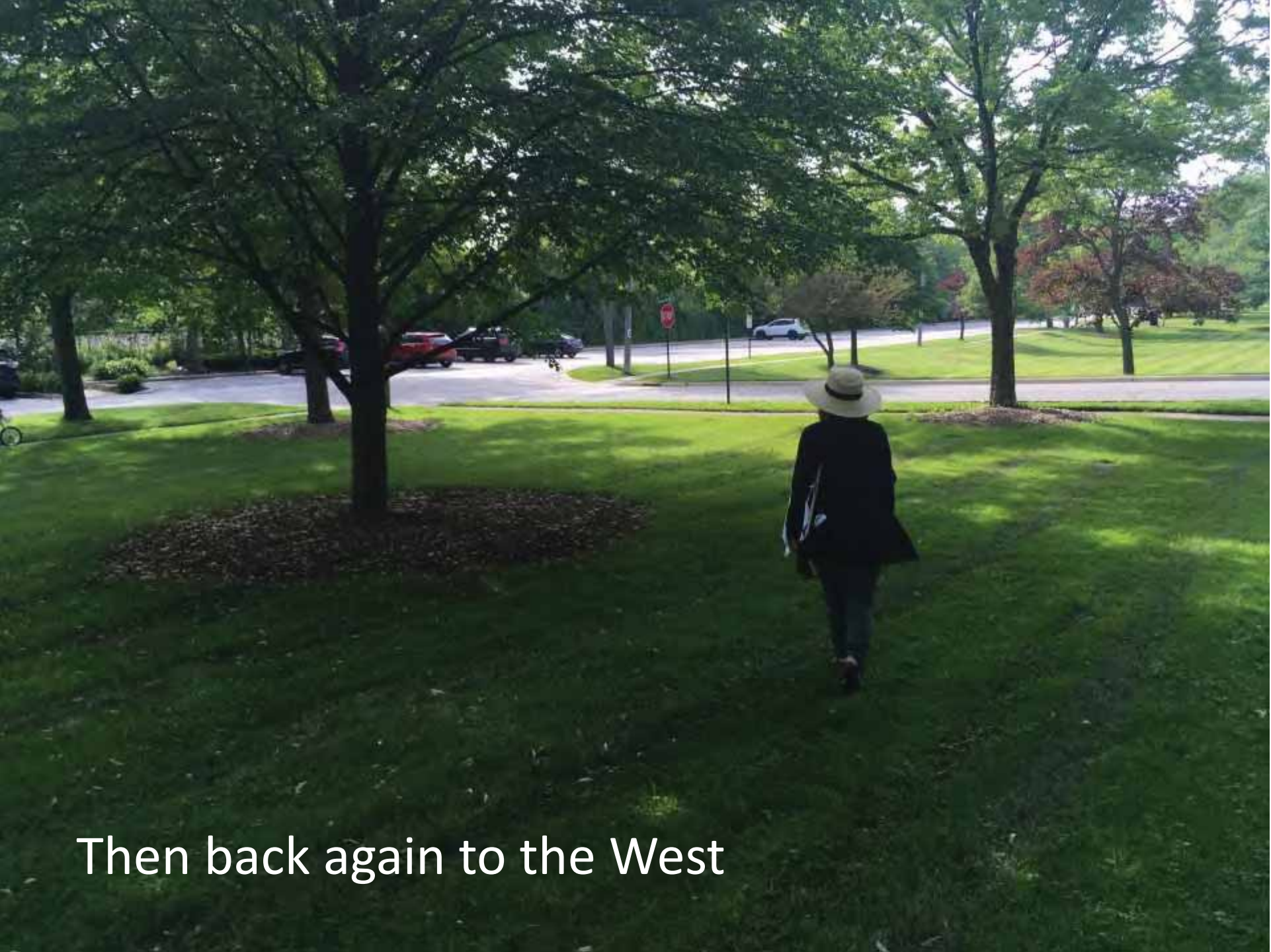


Swing Path East : To Open Space and Younger Trees



Plenty of Space





Then back again to the West





Proposal 2 : Hug the Sculpture

View from the North







Add Root Aeration Matting to Elm



Example Root Aeration Matting

Altamanu Inc.
landscape architecture • urban design • planning

SMP GROUP

GLENCOE
PARK DISTRICT



Remove Soil, add Crushed Gravel & Geotech Blanket

Altamanu Inc.
landscape architecture • urban design • planning

SMP GROUP

GLENCOE
PARK DISTRICT



Add Sculpture : But be Restrained in Choices and location
Could be Rotating Pieces on-loan

Add Sculpture Over Time



Work of Sophie Ryder



Add Sculpture Over Time



Add Select Spring Ephemerals Mow after Flowering

Altamanu Inc.
landscape architecture • urban design • planning





Example Mills Park

Example of Spring Ephemerals, but we would use Natives





Sculpture and Spring Ephemerals under Trees

Primary Path

Swing Benches

© 2011

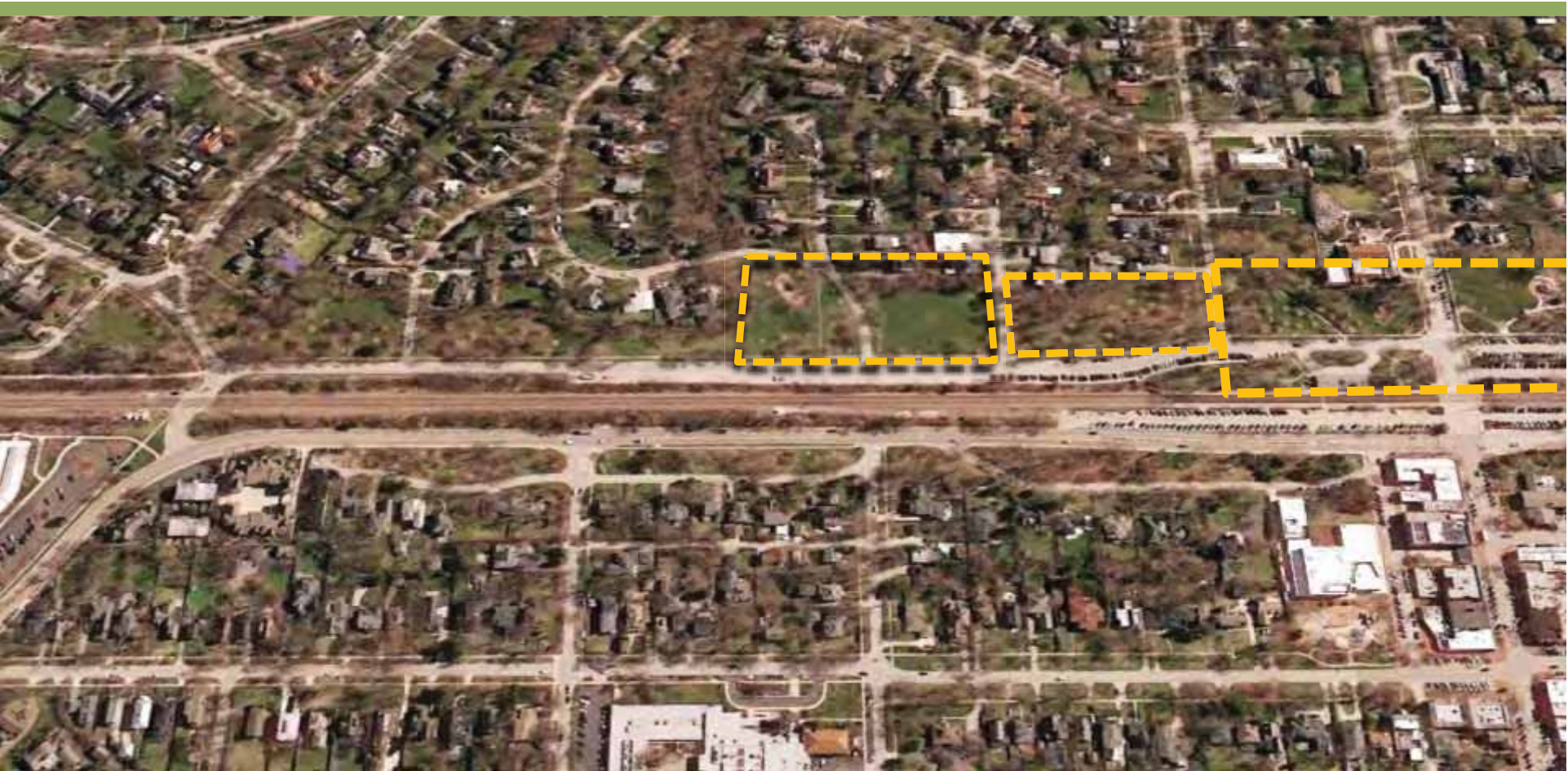
Proposed Plan for Sculpture Garden

Altamanu Inc.
landscape architecture • urban design • planning

SMP GROUP

GLENCOE PARK DISTRICT

Lincoln & Crescent Sculpture Garden The Quad



Playground
Topography
Head of Ravine
Open/Sunken Field

Breakwater
Sculpture
Oaks and Elms

Gateway
Veterans Memorial
Display Gardens
Arboretum
Liza's Gazebo

Existing Conditions Analysis



Ravines and Site



Lincoln and Crescent

Project Site and Drainage



Lincoln and Crescent

Altamanu Inc.
landscape architecture • urban design • planning

SMP GROUP

GLENCOE
PARK DISTRICT

Project Site and Drainage



Lincoln and Crescent

Altamanu Inc.
landscape architecture • urban design • planning

SMP GROUP

GLENCOE
PARK DISTRICT



Lincoln Dennis (Sunken Garden)

Altamanu Inc.
landscape architecture • urban design • planning

SMP GROUP





Lincoln Dennis: Open Space

Altamanu Inc.
landscape architecture • urban design • planning

SMP GROUP

GLENCOE
PARK DISTRICT



Lincoln Dennis

Altamanu Inc.
landscape architecture • urban design • planning





Lincoln Dennis : Drainage Issues

Altamanu Inc.
landscape architecture • urban design • planning





Lincoln Dennis: Use Topography

Altamanu Inc.
landscape architecture • urban design • planning

SMP GROUP





Lincoln Dennis: Looking South

Altamanu Inc.
landscape architecture • urban design • planning

SMP GROUP





Use Topography, Add Native Planting, Add Drainage

Altamanu Inc.
landscape architecture • urban design • planning

SMP GROUP

GLENCOE
PARK DISTRICT



Maintenance:

Turf Grass = **2.8 cents** / Sq. Ft. / Year

Natural Area = **16.2 cents** / Sq. Ft. / Year

Altamanu Inc.
landscape architecture • urban design • planning





**THIS PART OF THE
DESIGN HAS BEEN
UPDATED - REFER
TO NEW DESIGNS.**

Secondary Trail

Native Plantings

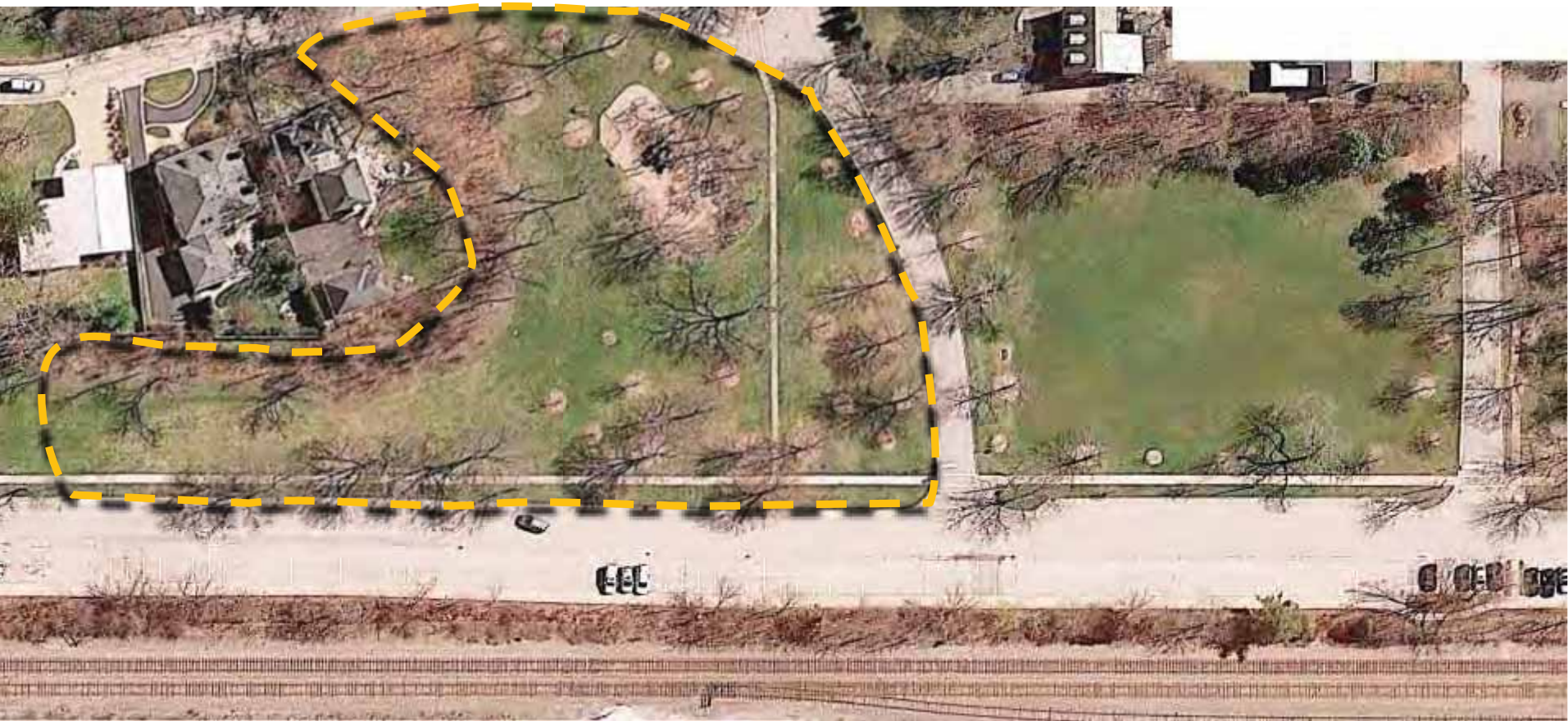
Primary Trail

Proposed Plan Sunken Garden

Altamanu Inc.
landscape architecture • urban design • planning

SMP GROUP

GLENCOE
PARK DISTRICT

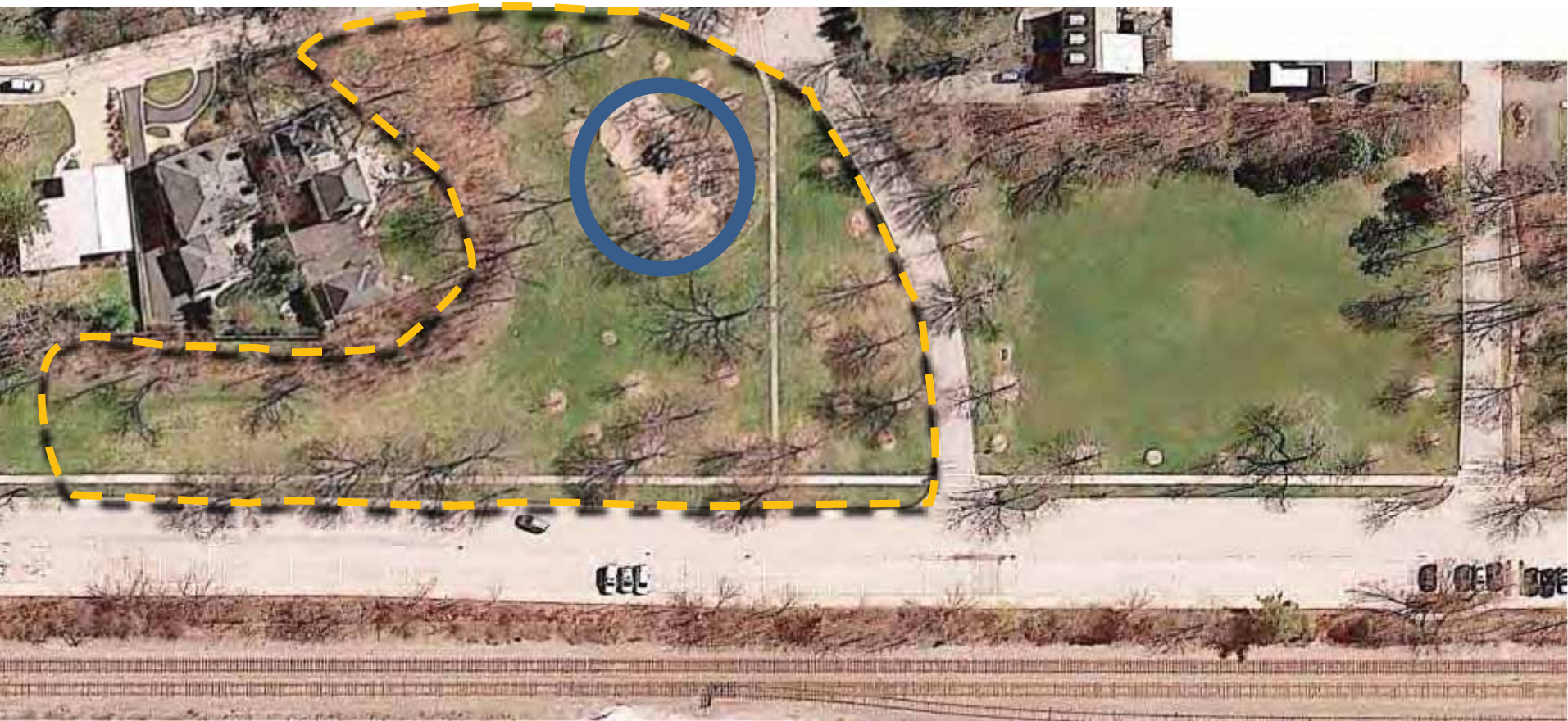


Lincoln Crescent

Altamanu Inc.
landscape architecture • urban design • planning

SMP GROUP

GLENCOE
PARK DISTRICT



Playground

Altamanu Inc.
landscape architecture • urban design • planning

SMP GROUP

GLENCOE
PARK DISTRICT



Path doesn't follow Lincoln

Altamanu Inc.
landscape architecture • urban design • planning

SMP GROUP

GLENCOE
PARK DISTRICT



Path doesn't follow Lincoln

Altamanu Inc.
landscape architecture • urban design • planning

SMP GROUP

GLENCOE
PARK DISTRICT



View from Old Green Bay



View from Field looking North



View from Old Green Bay



Slope of Ravine

View from Field looking North



Existing Playground on Rise

Altamanu Inc.
landscape architecture • urban design • planning

SMP GROUP



Make use of the Slope as at West Park



Playground

Altamanu Inc.
landscape architecture • urban design • planning

SMP GROUP

GLENCOE
PARK DISTRICT



Potential Play Equipment



Potential Play Equipment

Other Potential Additions



Potential Interactive Fountain, Small in Scale

Worked on similar at Field & Fred Anderson Parks





Discovery Garden Oak Park Conservatory

Altamanu Inc.
landscape architecture • urban design • planning





Discovery Garden Oak Park Conservatory

Altamanu Inc.
landscape architecture • urban design • planning

SMP GROUP





Discovery Garden Oak Park Conservatory

Altamanu Inc.
landscape architecture • urban design • planning





Interactive Water Feature

Runnel, runs down slope

Pool (connect to wet meadow planting and existing storm water catch basin)

Bring Both Concepts Together

Other Potential Additions



Example : Hand Driven Train

Altamanu Inc.
landscape architecture • urban design • planning

SMP GROUP

GLENCOE
PARK DISTRICT

Children can be Assisted



Example : Hand Driven Train



Main Playground

Water Fountain

Group Swings

Hand Driven Train

Potential Hand Driven Train



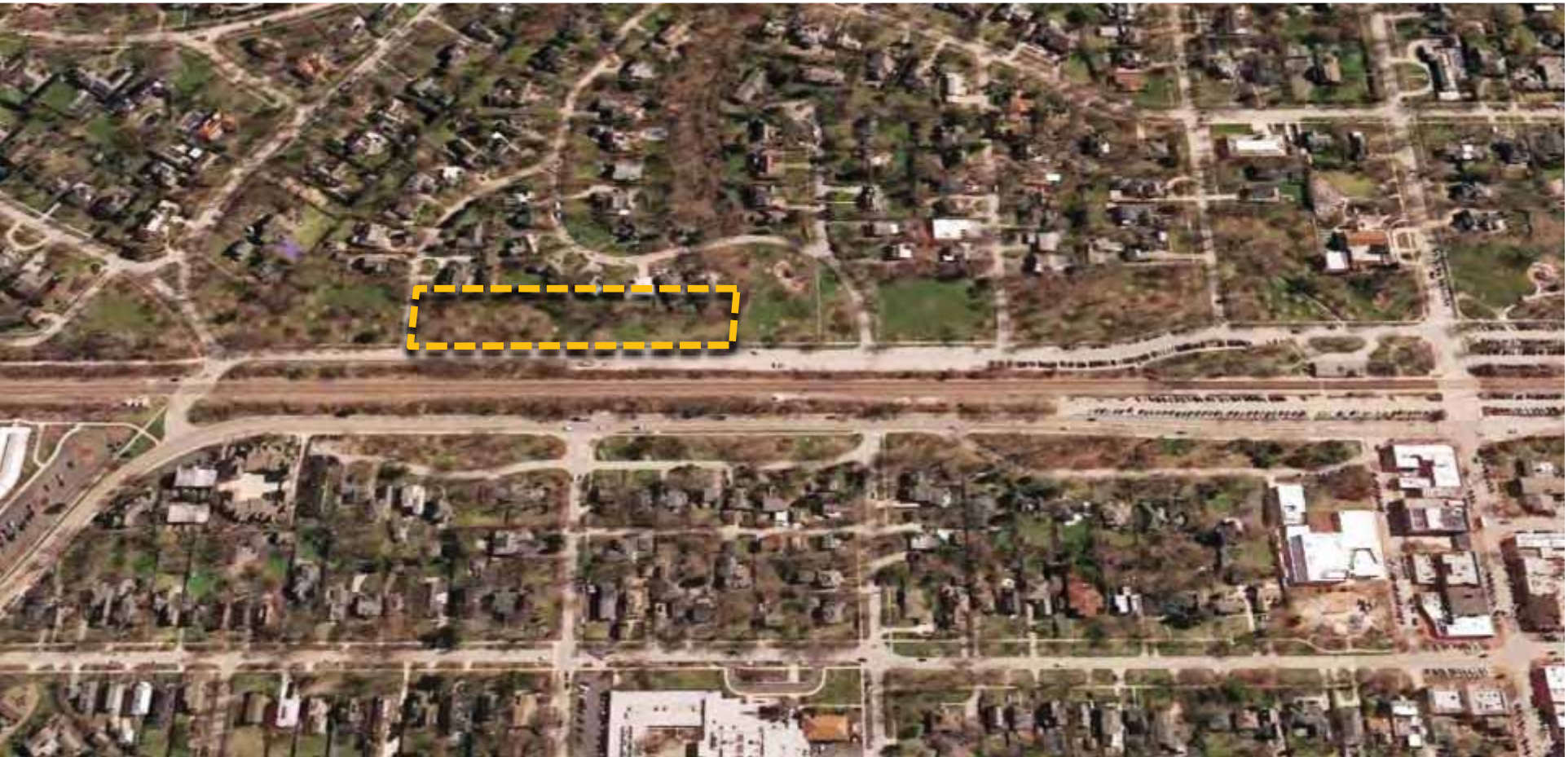
Proposed Plan Lincoln Crescent

Altamanu Inc.
landscape architecture • urban design • planning

SMP GROUP

GLENCOE
PARK DISTRICT

Meadow



Wet Habitat
Volunteer Growth
Open Meadow

Existing Conditions Analysis





Pinch Point to Walden

Altamanu Inc.
landscape architecture • urban design • planning

SMP GROUP

GLENGE
DAK RIVERSIDE



Pinch Point

Altamanu Inc.
landscape architecture • urban design • planning

SMP GROUP
SMP GROUP





Dry, Drains to East

Altamanu Inc.
landscape architecture • urban design • planning

SMP GROUP

GLENCOE
PARK DISTRICT



Opens Up but Slope Diminishes

Altamanu Inc.
landscape architecture • urban design • planning

SMP GROUP

GLENCOE
PARK DISTRICT

Wet Meadow







Wet Meadow Native Planting

Altamanu Inc.
landscape architecture • urban design • planning

SMP GROUP



Or Keep it Simple, with One or Two Plant Species



Example Grasses

Mills Park



We hope multi-use path will be used by all ages
a fence may be required in some areas



Taylor Park Oak Park

Could be behind Fence



However, it will revert to this without proper maintenance





Native Planting Along Edge

Play together pod

Play together Pod

Meadow and Wet Meadow

Woodland Discovery

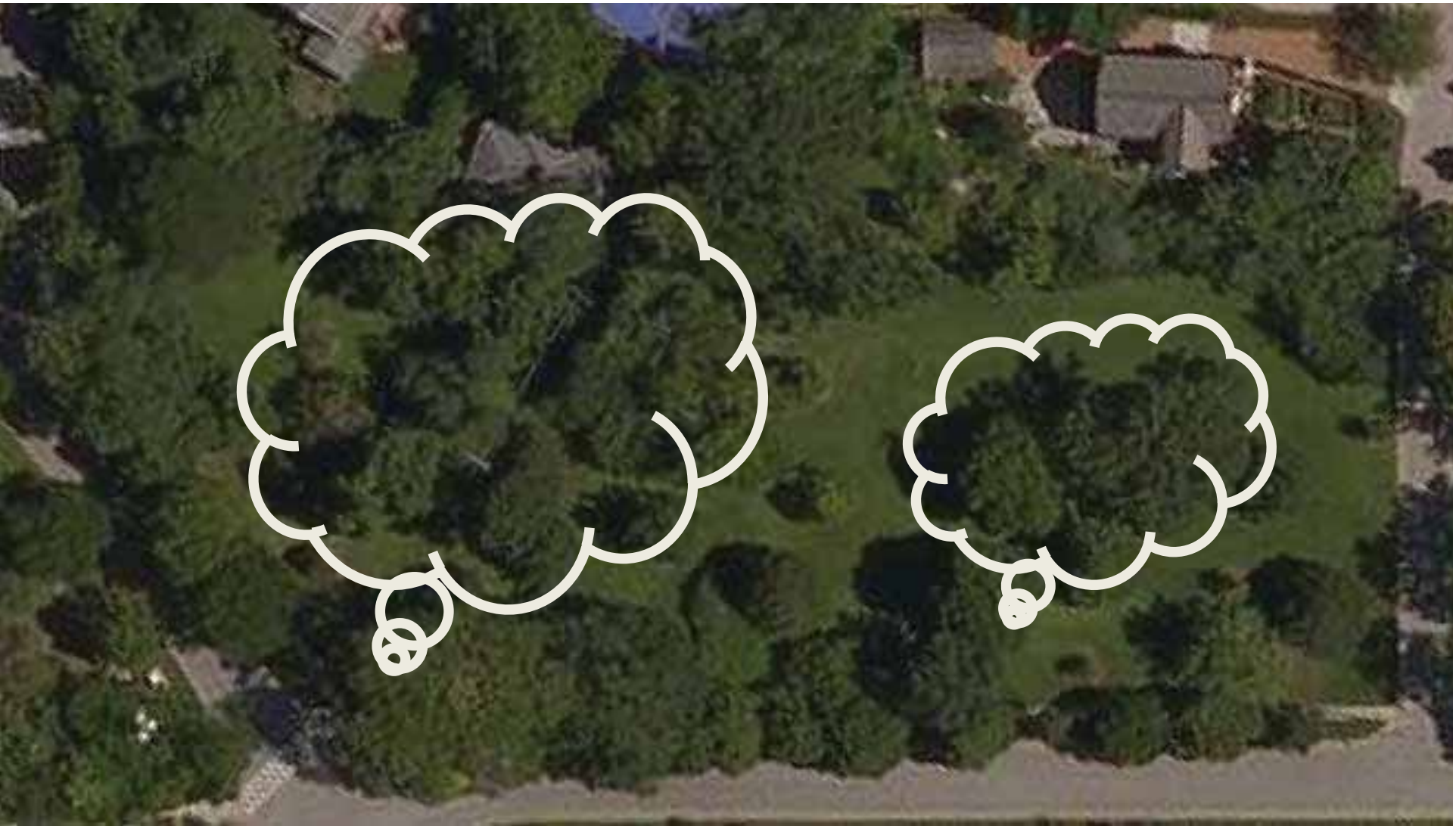


Woodland w/
Wet Areas

Existing Conditions Analysis



Woodland Discovery



Two Large Copse of Trees



Direction to Team

- Create something Unique
- Something inspired by Nature
- Can be used for Fund Raising
- Can be Expanded Over-Time

Woodland Discovery



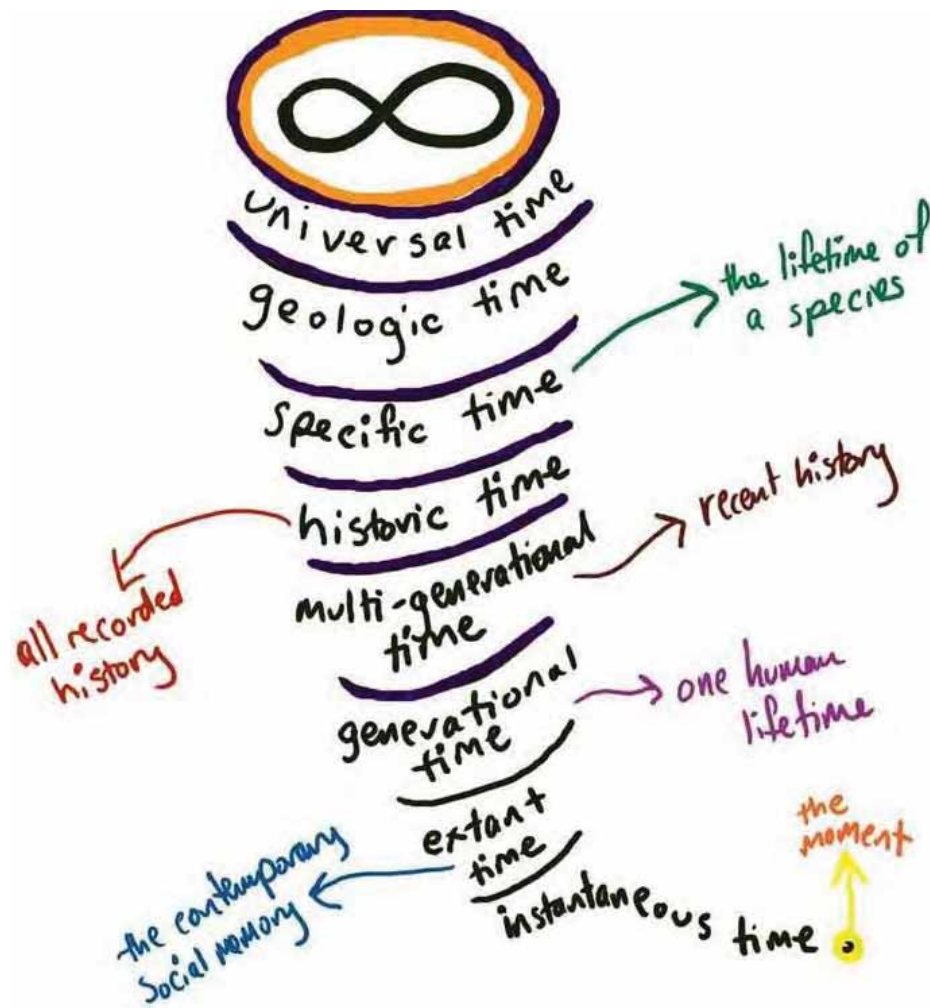
- Create something Unique
- Something inspired by Nature
- Can be used for Fund Raising
- Can be Expanded Over-Time

Woodland Discovery



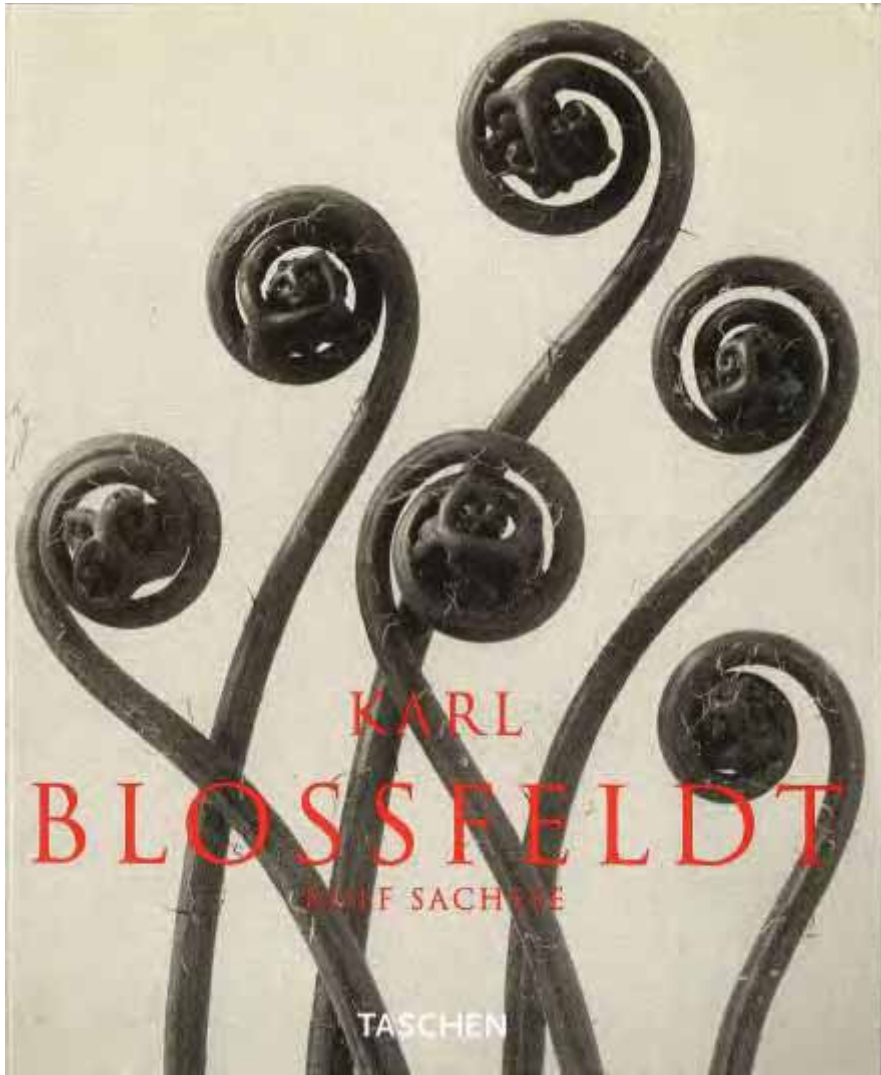
Create a Labyrinth & Tell The Story of Glencoe

Lines in the grass each with a different timeline and different local info?



Woodland Discovery

Inspiration from Nature and Karl Blossfeldt



Woodland Discovery

Altamanu Inc. 
landscape architecture • urban design • planning


SMP GROUP


GLENCOE
PARK DISTRICT

Imagine Flat on Ground

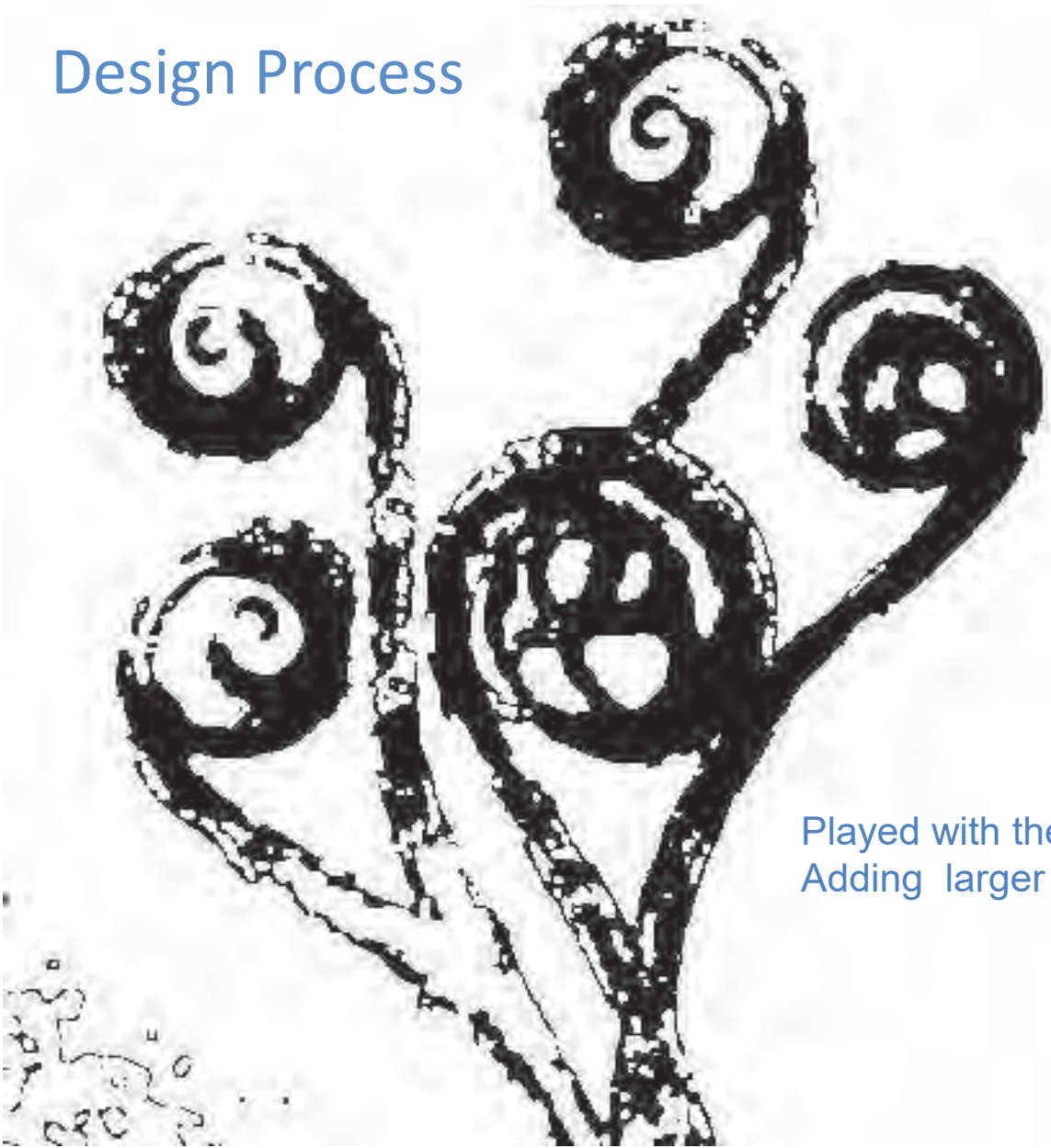


Woodland Discovery

Altamanu Inc.
landscape architecture • urban design • planning



Design Process



Played with the Image
Adding larger Central section

Woodland Discovery

Design Process : Pixelate and Make into Rectangles



Design Process : Can be any size and of any complexity
(Scale Invariance: Pattern Applies at all Scales)



However, Would it be a Labyrinth or a Maze?



Woodland Discovery

Altamanu Inc.
landscape architecture • urban design • planning

SMP GROUP

GLENCOE
PARK DISTRICT

However, Would it be a Labyrinth or a Maze?

Or is it a Maze?

A **maze** is a complex branching (multicursal) puzzle that includes choices of path and direction, may have multiple entrances and exits, and dead ends.

A **labyrinth** is unicursal i.e. has only a single, non-branching path, which leads to the center then back out the same way, with only one entry/exit point

You Judge

Woodland Discovery

However, Would it be a Labyrinth or a Maze?

Multicursal and Unicursal

Multicursal labyrinth form contains many false turns and dead ends.

Unicursal labyrinth has only one entrance, may twist and turn, BUT there are no false turns, and if the walkers stay on the path, they will eventually find themselves in the center.

Woodland Discovery





Example Labyrinth: Mills Park : A single Journey
"Unicursal"



Glencoe's (Multicursal) Labyrinth



Woodland Discovery

Altamanu Inc.
landscape architecture • urban design • planning



Glencoe's (Multicursal) Labyrinth



Woodland Discovery

Altamanu Inc.
landscape architecture • urban design • planning

SMP GROUP



If we want to foster interest in cycling need events for kids



Woodland Discovery



Woodland Discovery

Altamanu Inc.
landscape architecture • urban design • planning

SMP GROUP

GLENCOE
PARK DISTRICT



Glencoe Labyrinth

Children's Circuit

Plan of Woodland Discovery

Altamano Inc.
landscape architecture • urban design • planning

SMP GROUP



Brings us to the Northern Gateway

Northern Gateway



Brings us to the Northern Gateway



View looking South from Northern Gateway

Northern Gateway





Trying to encourage people into the park



However many go straight across a busy intersection



Or along the sidewalk



Views Blocked by Utilities, Trees & Curve of Alignment

Complicated by Sidewalk and Desire Lines





Fast Moving Traffic on Road Doesn't Stop



Sidewalk Goes Between Utility Boxes



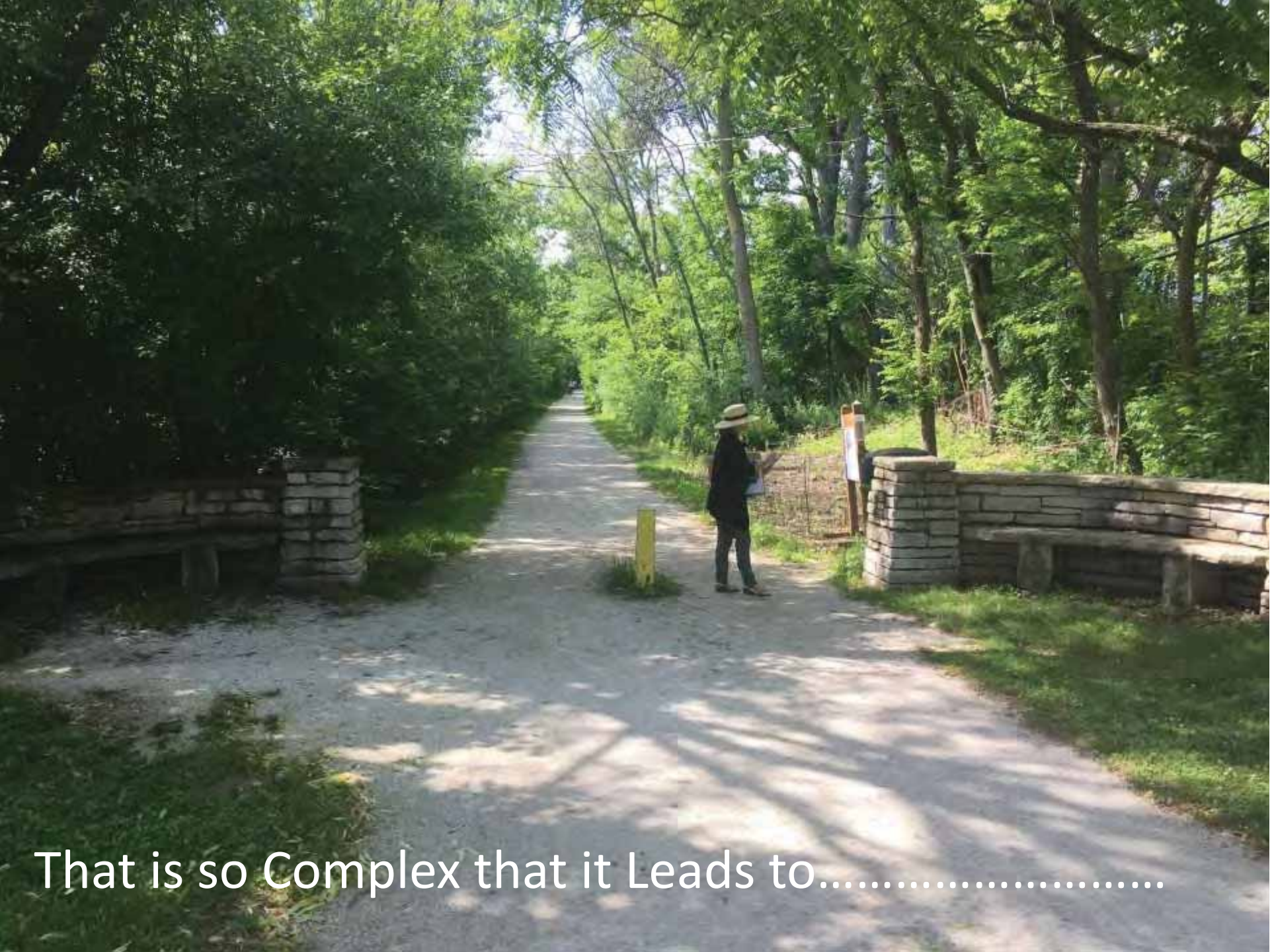
To a Desire Line Through the Park



That Approaches the Intersection at an Angle



That Leads to Peds and Bikes Crossing at an Angle



That is so Complex that it Leads to.....



“AH JEEZ”



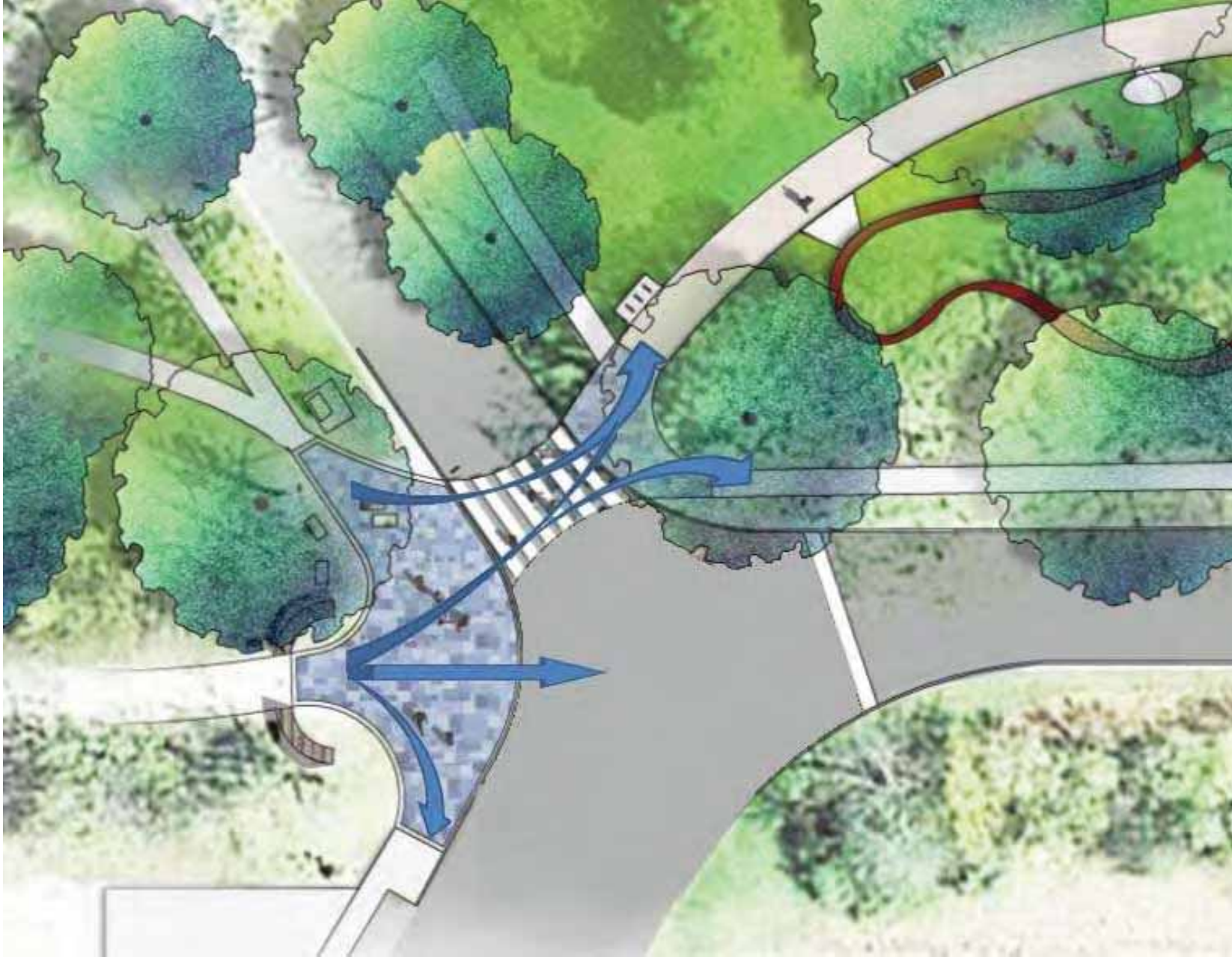
Which Way Do We Go?



Proposed Plan Northern Gateway

Altamano Inc.
landscape architecture • urban design • planning



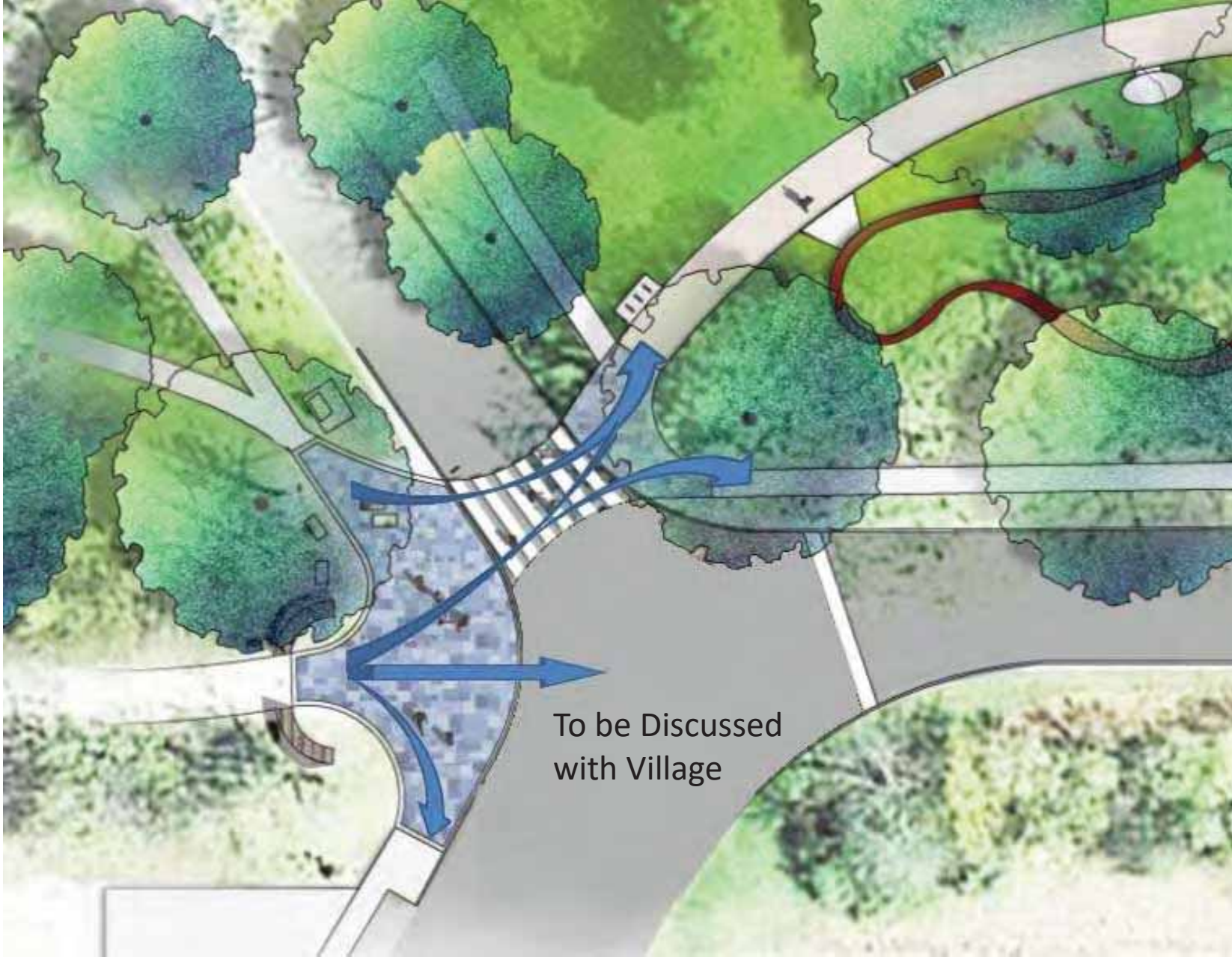


Proposed Plan Northern Gateway

Altamanu Inc.
landscape architecture • urban design • planning

SMP GROUP





Proposed Plan Northern Gateway

Altamanu Inc.
landscape architecture • urban design • planning

SMP GROUP





Overall Plan

Altamano Inc. 
 landscape architecture • urban design • planning


 SMP GROUP
 landscape architecture • urban design • planning


 GLENCOE
 PARK DISTRICT



Thank You

Altamanu.com

VI. Capital Projects Discussion

Glencoe Park District

September 11, 2018

Special Projects and Facilities Committee Meeting



INTEROFFICE MEMORANDUM

TO: BOARD OF COMMISSIONERS
FROM: LISA SHEPPARD, EXECUTIVE DIRECTOR
SUBJECT: CAPITAL PROJECT PLAN
DATE: 8/19/18
CC: CAROL MENSINGER AND CHRIS LEINER

Attached is the three-year capital projects plan current and proposed. During the special projects meeting, we would like to begin discussion on any updates or changes. Staff is recommending that the following projects not be added to the Capital Plan and only be completed in the 5-year timeframe if donations are secured:

- Takiff Parking E and F
- Bird Sanctuary (general maintenance will come from fund 65)
- Reinsdorf Field

Staff would also like to make the Board aware of items that have received more than normal community input/calls on this year:

- Lights for the tennis courts at Watts
- Improved drainage in low lying park land that retains water for long periods of time
- Improvements to the baseball field at Watts: Skin infield and improve drainage
- Improvements to the baseball field at West: Complete renovation of the fields

If the Board chooses to advance the Green Bay Linear Park project and apply for an OSRAD grant, discussion will need to take place on what proposed projects can be delayed that are currently slated for the next couple of years.

PROPOSED 3YR Master Plan - Staff Recommendation

SEPTEMBER 2018	Actual 2016/17	Actual 2017/18	Current 2018/19	Proposed 2019/20	Proposed 2020/21	Proposed 2021/22	Later	
Estimated Beginning Balance, 3/1/xx	2,480,432	1,500,569	1,673,805	1,096,095	128,255	693,255		
Funding Sources:								
Transfer from Corp Fund	150,000	600,000	500,000	300,000	300,000	300,000		
Transfer from Recreation Fund	250,000	1,100,000	500,000	700,000	500,000	500,000		
Transfer from Impact Fund	24,040	28,313	8,000					
Donations	10,100	2,000						
Sale of Linden house				TBD				
Interest Income	925	22,270	20,000	20,000	15,000	15,000		
Annual ADA monies - Special Recreation Fund	150,000	Shown as reduction of expense moving forward						
New bonds (Non-Referendum - Watts Debt retires 12/1/2020)					TBD			
Total Funds Available	3,065,497	3,253,152	2,701,805	2,116,095	943,255	1,508,255		
Projects To Be Funded:								
Design Services-Dog Park (for potential donor)	15,307							
Central Park/Berlin Project	824,593	41,524						
Shelton Park Playground	263,865							
Kalk Park Project	279,504							
Watts BB Court Project	9,823	47,603	25,000					
Design Services-Astor Park	3,246							
Design Services-Lakefront	1,383	35,636						
Design Services-West Playground Renovation	16,105							
Design Services-Takiff Parking Lot	1,102							
ADA Monies-Special Recreation Fund	150,000	(120,000)	(175,000)	(175,000)	(175,000)	(175,000)		
Playground - West School (approved base bid)/design svcs		506,076						
Less: SD 35 contribution		(262,310)						
West Playground (Alternates 1, 2, and 3)		165,805						
Less: SD 35 contribution for Alternates 1, 2, and 3		(165,805)						
Playground - Astor Place (appvd bid/design svc/owner items)		162,987						
Fitness Center including Fitness Equipment		392,821						
Lakefront Park Improvements - tabled for this year - wait for geotech								
Takiff Parking - Phase A,B,C		637,495	113,500					
Takiff Parking-UST		40,453	15,000					
Beach Geotech and LT Maintenance Plan - moved from 18/19		951	80,000					
Shelton Pathway (grading and minor drainage)			20,000	70,000				
Playground Replacement- Lincoln & Crescent (By Camp Drop Off)		2,160		222,840				
Playground Replacement - Vernon and Jefferson		21,267	201,230					
Lakefront Park - Tennis Court				150,000				
Playground Replacement - Old Elm (Behind Takiff)		19,117	205,880					
Takiff Parking Lot-Phase D		9,102	447,000					

Playground Replacement - Lakefront Park			225,000			
Playground Replacement - Woodlawn	41,520	458,100				
Secret Garden Park and WLC Park Retaining Walls			200,000			
Everly Wildflower Sanctuary - <i>moved to operating</i>						
Playground Replacement-Milton Park and pathway (Off Dundee Rd)			130,000			
Playground Replacement-Takiff Early Childhood			400,000			
Playground Improvements-Friends Park Phase 2		25,000		300,000		
Park Maintenance Garage						TBD
Lakefront Park/Halfway House/Bluff/Beach						TBD
Watts Ice Rink						TBD
Old Green Bay Linear Parks		65,000	365,000			
Less: Village Contribution						
Replacement Skate Park - TBD						350,000
Kalk Park - Phase 2						300,000
Sports Fields at West Park						800,000
Sports Fields at Watts Park						400,000
Veterans Park			275,000			
Contingency	2,945	25,000	25,000	25,000		
Design Fees for the FOLLOWING Year Projects		100,000	100,000	100,000		
Dog Park - Donation Item						
North Field (Takiff) Athletic Field-Donation Item						
Total Projects	1,564,928	1,579,347	1,605,710	1,987,840	250,000	1,850,000
Ending balance, 2/28/xx	1,500,569	1,673,805	1,096,095	128,255	693,255	(341,745)